



## Excellent Integrated System Limited

Stocking Distributor

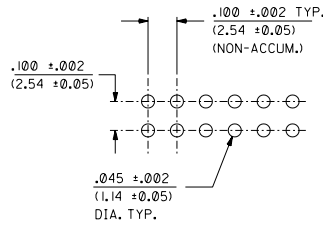
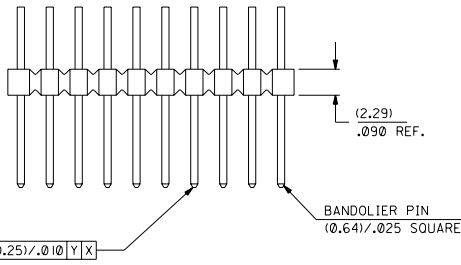
Click to view price, real time Inventory, Delivery & Lifecycle Information:

[Molex Connector Corporation](#)

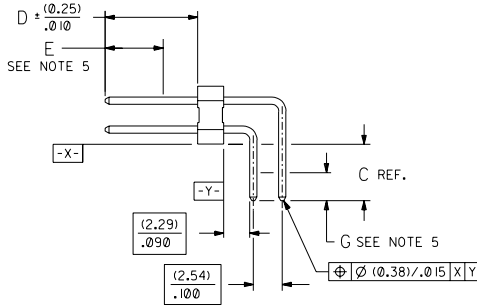
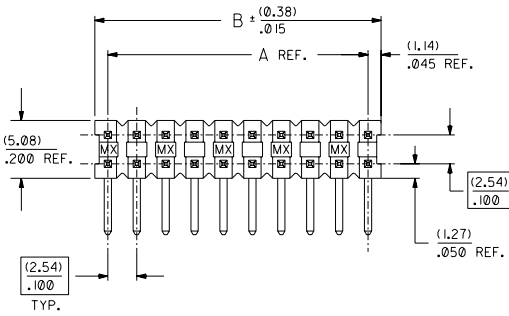
[10-89-1746](#)

For any questions, you can email us directly:

[sales@integrated-circuit.com](mailto:sales@integrated-circuit.com)



RECOMMENDED P.C. BOARD HOLE LAYOUT



CKT. SIZE	DIM. A REF.		DIM. B REF.	
	(MM)	(INCH)	(MM)	(INCH)
4	(2.54)	.100	(4.83)	.190
6	(5.08)	.200	(7.37)	.290
8	(7.62)	.300	(9.91)	.390
10	(10.16)	.400	(12.45)	.490
12	(12.70)	.500	(14.99)	.590
14	(15.24)	.600	(17.53)	.690
16	(17.78)	.700	(20.07)	.790
18	(20.32)	.800	(22.61)	.890
20	(22.86)	.900	(25.15)	.990
22	(25.40)	1.000	(27.69)	1.090
24	(27.94)	1.100	(30.23)	1.190
26	(30.48)	1.200	(32.77)	1.290
28	(33.02)	1.300	(35.31)	1.390
30	(35.56)	1.400	(37.85)	1.490
32	(38.10)	1.500	(40.39)	1.590
34	(40.64)	1.600	(42.93)	1.690
36	(43.18)	1.700	(45.47)	1.790
38	(45.72)	1.800	(48.01)	1.890
40	(48.26)	1.900	(50.55)	1.990
42	(50.80)	2.000	(53.09)	2.090
44	(53.34)	2.100	(55.63)	2.190
46	(55.88)	2.200	(58.17)	2.290
48	(58.42)	2.300	(60.71)	2.390
50	(60.96)	2.400	(63.25)	2.490
52	(63.50)	2.500	(65.79)	2.590
54	(66.04)	2.600	(68.33)	2.690
56	(68.58)	2.700	(70.87)	2.790
58	(71.12)	2.800	(73.41)	2.890
60	(73.66)	2.900	(75.95)	2.990
62	(76.20)	3.000	(78.49)	3.090
64	(78.74)	3.100	(81.03)	3.190
66	(81.28)	3.200	(83.57)	3.290
68	(83.82)	3.300	(86.11)	3.390
70	(86.36)	3.400	(88.65)	3.490
72	(88.90)	3.500	(91.19)	3.590
74	(91.44)	3.600	(93.73)	3.690
76	(93.98)	3.700	(96.27)	3.790
78	(96.52)	3.800	(98.81)	3.890
80	(99.06)	3.900	(101.35)	3.990

**NOTES:**

- PIN PUSHOUT FORCE: 4 LBS. MINIMUM
- FOR ILLUSTRATION PURPOSES, 20 (DUAL 10) CIRCUIT SIZE IS SHOWN.
- PINS MUST MEET SOLDERABILITY SPEC. ES-152, EXCEPT VOIDS ARE PERMISSIBLE AT BANDOLIER PIN FAYING SURFACE. (APPROX. .025 LNG X .006 WD. REF.) - 2 LOCATIONS
- WAFER TO BE FLAT WITHIN (0.03 MM/CM) / .003 IN./IN.
- MEASURE POINT FOR PLATING THICKNESS.
- THIS PRODUCT CONFORMS TO MOLEX PRODUCT SPEC. PS-70203.
- FOR ASSEMBLIES WITH VOIDS, REFER TO DRAWING NUMBER SDA-70203-5001-9999.
- PACKAGING INFORMATION: (UNLESS OTHERWISE NOTED IN TABLES)  

CIRCUIT SIZE	PACKAGING DRAWING
4 THROUGH 8	PK-70873-0353
10 AND OVER	PK-70873-0075

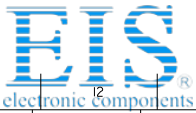
**FINISH:**

- TIN - .000150 MINIMUM TIN PLATE OVER NICKEL PLATE.
- 15 GOLD - .000015 MINIMUM GOLD PLATE IN SELECT AREA, .000075 MINIMUM TIN PLATE IN SELECT AREA, OVER NICKEL PLATE OVERALL.
- 30 GOLD - .000030 MINIMUM GOLD PLATE IN SELECT AREA, .000075 MINIMUM TIN PLATE IN SELECT AREA, OVER NICKEL PLATE OVERALL.
- \*THE PRIMARY SHIPPING CARTON WILL BE LABELED 'COMPLIANT TO ROHS DIRECTIVE 2002/95/EC AND ELV ANNEX II OF DIRECTIVE 2000/53/EC'. CARTONS WITHOUT THIS LABEL MAY CONTAIN PRODUCT WITH LEAD.

**MATERIAL:**

- WAFER - G.F. POLYESTER; 94V-0; COLOR: BLACK
- PIN - PHOSPHOR BRONZE

D	LEAD FREE UCP2004-1770 RWHITE 04/04/23																																
C1	REVISE PKNG ECN UD72000-0949 SCHAEFER 00/4/26																																
C	REVISED PER ECN # U60711 1/8/96 BJS/RCB																																
B1	ADDED EDP #S PER ECR # U60256 95/08/23 CAC																																
B	VOIDED EDP NO'S PER ECR # U60037 95/07/27 CAC																																
A	RELEASED PER ECR # U31656 REED																																
<table border="1"> <tr> <th>MFG.</th> <th>SH.</th> <th>REV.</th> <th>LTR.</th> <th>REVISIONS</th> </tr> <tr> <td>2</td> <td>D</td> <td>A</td> <td></td> <td></td> </tr> <tr> <td>1</td> <td>D</td> <td></td> <td></td> <td></td> </tr> </table>		MFG.	SH.	REV.	LTR.	REVISIONS	2	D	A			1	D																				
MFG.	SH.	REV.	LTR.	REVISIONS																													
2	D	A																															
1	D																																
<table border="1"> <tr> <th colspan="2">DIMENSIONS SHOWN (METRIC) INCH</th> <th colspan="2">UNLESS OTHERWISE SPECIFIED TOLERANCES ARE AS FOLLOWS</th> </tr> <tr> <td>± PLATE</td> <td>± .005</td> <td>---</td> <td>---</td> </tr> <tr> <td>± PLATE</td> <td>± .01</td> <td>± 0.13</td> <td>---</td> </tr> <tr> <td>± PLATE</td> <td>---</td> <td>± 0.25</td> <td>---</td> </tr> </table>		DIMENSIONS SHOWN (METRIC) INCH		UNLESS OTHERWISE SPECIFIED TOLERANCES ARE AS FOLLOWS		± PLATE	± .005	---	---	± PLATE	± .01	± 0.13	---	± PLATE	---	± 0.25	---																
DIMENSIONS SHOWN (METRIC) INCH		UNLESS OTHERWISE SPECIFIED TOLERANCES ARE AS FOLLOWS																															
± PLATE	± .005	---	---																														
± PLATE	± .01	± 0.13	---																														
± PLATE	---	± 0.25	---																														
<table border="1"> <tr> <th colspan="2">TITLE</th> <th colspan="2">REVISE ONLY ON CAD SYSTEM</th> </tr> <tr> <td colspan="2">SALES ASSY-DUAL ROW WAFER W/BREAK-OFF OPTION RIGHT ANGLE / .025 SQ PINS</td> <td colspan="2"></td> </tr> <tr> <td>MOLEX INCORPORATED</td> <td>SHEET NO.</td> <td>DATE</td> <td></td> </tr> <tr> <td>10000</td> <td>10000</td> <td>11/18/93</td> <td></td> </tr> <tr> <td colspan="2">PART NO.</td> <td colspan="2">DRWG. NO.</td> </tr> <tr> <td colspan="2">SEE CHART SDA-70203-0001-5000</td> <td colspan="2"></td> </tr> <tr> <td>DRWG. BY</td> <td>SMR</td> <td>CHKD. BY</td> <td>SMR</td> </tr> <tr> <td>APPD. BY</td> <td>SCALE 4:1</td> <td>FILE NAME</td> <td>578203X1</td> </tr> </table>		TITLE		REVISE ONLY ON CAD SYSTEM		SALES ASSY-DUAL ROW WAFER W/BREAK-OFF OPTION RIGHT ANGLE / .025 SQ PINS				MOLEX INCORPORATED	SHEET NO.	DATE		10000	10000	11/18/93		PART NO.		DRWG. NO.		SEE CHART SDA-70203-0001-5000				DRWG. BY	SMR	CHKD. BY	SMR	APPD. BY	SCALE 4:1	FILE NAME	578203X1
TITLE		REVISE ONLY ON CAD SYSTEM																															
SALES ASSY-DUAL ROW WAFER W/BREAK-OFF OPTION RIGHT ANGLE / .025 SQ PINS																																	
MOLEX INCORPORATED	SHEET NO.	DATE																															
10000	10000	11/18/93																															
PART NO.		DRWG. NO.																															
SEE CHART SDA-70203-0001-5000																																	
DRWG. BY	SMR	CHKD. BY	SMR																														
APPD. BY	SCALE 4:1	FILE NAME	578203X1																														



# Distributor of Molex Connector Corporation: Excellent Integrated System Limited

## Datasheet of 10-89-1746 - CONN HEADER 74POS .100 R/A GOLD

Contact us: [sales@integrated-circuit.com](mailto:sales@integrated-circuit.com) Website: [www.integrated-circuit.com](http://www.integrated-circuit.com)

ENGINEERING NUMBER A-70203	RELEASE FOR MANUFACTURE	EXPOSED PIN DIM.		PLATING PER NOTES SHEET 1	CONNECTOR END PLATING		P.C. BOARD END PLATING		FOR PKG. INFO. SEE NOTE 8, SHEET 1
		C REF.	D ± (0.25) .010		TYPE	E MEAS.	TYPE	G MEAS.	
-0001/-0039	R.F.M.	(2.79) .10	(6.10) .240	TIN	TIN	(2.54) .100	TIN	(1.27) .050	
-0040/-0078	R.F.M.	(2.79) .10	(8.13) .320	TIN	TIN	(4.57) .180	TIN	(1.27) .050	
-0079/-0117	R.F.M.	(4.45) .175	(6.10) .240	TIN	TIN	(2.54) .100	TIN	(1.27) .050	
-0157/-0195	R.F.M.	(2.79) .10	(6.10) .240	15 GOLD	GOLD	(2.54) .100	TIN	(1.27) .050	
-0196/-0234	R.F.M.	(2.79) .10	(8.13) .320	15 GOLD	GOLD	(4.57) .180	TIN	(1.27) .050	
-0313/-0351	R.F.M.	(2.79) .10	(6.10) .240	30 GOLD	GOLD	(2.54) .100	TIN	(1.27) .050	
-0352/-0390	R.F.M.	(2.79) .10	(8.13) .320	30 GOLD	GOLD	(4.57) .180	TIN	(1.27) .050	

CKTS	EDP NUMBER	ENG NUMBER	EDP NUMBER	ENG NUMBER	EDP NUMBER	ENG NUMBER	EDP NUMBER	ENG NUMBER	EDP NUMBER	ENG NUMBER	EDP NUMBER	ENG NUMBER	EDP NUMBER	ENG NUMBER	EDP NUMBER	ENG NUMBER	EDP NUMBER	ENG NUMBER
04	10-88-1045	A-70203-0001	10-88-1046	A-70203-0040	10-89-1046	A-70203-0157	10-89-1047	A-70203-0196	10-89-2046	A-70203-0313	10-89-2047	A-70203-0352	04					
06	10-88-1065	A-70203-0002	10-88-1066	A-70203-0041	10-89-1066	A-70203-0158	10-89-1067	A-70203-0197	10-89-2066	A-70203-0314	10-89-2067	A-70203-0353	06					
08	10-88-1085	A-70203-0003	10-88-1086	A-70203-0042	10-89-1086	A-70203-0159	10-89-1087	A-70203-0198	10-89-2086	A-70203-0315	10-89-2087	A-70203-0354	08					
10	10-88-1105	A-70203-0004	10-88-1106	A-70203-0043	10-89-1106	A-70203-0160	10-89-1107	A-70203-0199	10-89-2106	A-70203-0316	10-89-2107	A-70203-0355	10					
12	10-88-1125	A-70203-0005	10-88-1126	A-70203-0044	10-89-1126	A-70203-0161	10-89-1127	A-70203-0200	10-89-2126	A-70203-0317	10-89-2127	A-70203-0356	12					
14	10-88-1145	A-70203-0006	10-88-1146	A-70203-0045	10-89-1146	A-70203-0162	10-89-1147	A-70203-0201	10-89-2146	A-70203-0318	10-89-2147	A-70203-0357	14					
16	10-88-1165	A-70203-0007	10-88-1166	A-70203-0046	10-89-1166	A-70203-0163	10-89-1167	A-70203-0202	10-89-2166	A-70203-0319	10-89-2167	A-70203-0358	16					
18	10-88-1185	A-70203-0008	10-88-1186	A-70203-0047	10-89-1186	A-70203-0164	10-89-1187	A-70203-0203	10-89-2186	A-70203-0320	10-89-2187	A-70203-0359	18					
20	10-88-1205	A-70203-0009	10-88-1206	A-70203-0048	10-89-1206	A-70203-0165	10-89-1207	A-70203-0204	10-89-2206	A-70203-0321	10-89-2207	A-70203-0360	20					
22	10-88-1225	A-70203-0010	10-88-1226	A-70203-0049	10-89-1226	A-70203-0166	10-89-1227	A-70203-0205	10-89-2226	A-70203-0322	10-89-2227	A-70203-0361	22					
24	10-88-1245	A-70203-0011	10-88-1246	A-70203-0050	10-89-1246	A-70203-0167	10-89-1247	A-70203-0206	10-89-2246	A-70203-0323	10-89-2247	A-70203-0362	24					
26	10-88-1265	A-70203-0012	10-88-1266	A-70203-0051	10-89-1266	A-70203-0168	10-89-1267	A-70203-0207	10-89-2266	A-70203-0324	10-89-2267	A-70203-0363	26					
28	10-88-1285	A-70203-0013	10-88-1286	A-70203-0052	10-89-1286	A-70203-0169	10-89-1287	A-70203-0208	10-89-2286	A-70203-0325	10-89-2287	A-70203-0364	28					
30	10-88-1305	A-70203-0014	10-88-1306	A-70203-0053	10-89-1306	A-70203-0170	10-89-1307	A-70203-0209	10-89-2306	A-70203-0326	10-89-2307	A-70203-0365	30					
32	10-88-1325	A-70203-0015	10-88-1326	A-70203-0054	10-89-1326	A-70203-0171	10-89-1327	A-70203-0210	10-89-2326	A-70203-0327	10-89-2327	A-70203-0366	32					
34	10-88-1345	A-70203-0016	10-88-1346	A-70203-0055	10-89-1346	A-70203-0172	10-89-1347	A-70203-0211	10-89-2346	A-70203-0328	10-89-2347	A-70203-0367	34					
36	10-88-1365	A-70203-0017	10-88-1366	A-70203-0056	10-89-1366	A-70203-0173	10-89-1367	A-70203-0212	10-89-2366	A-70203-0329	10-89-2367	A-70203-0368	36					
38	10-88-1385	A-70203-0018	10-88-1386	A-70203-0057	10-89-1386	A-70203-0174	10-89-1387	A-70203-0213	10-89-2386	A-70203-0330	10-89-2387	A-70203-0369	38					
40	10-88-1405	A-70203-0019	10-88-1406	A-70203-0058	10-89-1406	A-70203-0175	10-89-1407	A-70203-0214	10-89-2406	A-70203-0331	10-89-2407	A-70203-0370	40					
42	10-88-1425	A-70203-0020	10-88-1426	A-70203-0059	10-89-1426	A-70203-0176	10-89-1427	A-70203-0215	10-89-2426	A-70203-0332	10-89-2427	A-70203-0371	42					
44	10-88-1445	A-70203-0021	10-88-1446	A-70203-0060	10-89-1446	A-70203-0177	10-89-1447	A-70203-0216	10-89-2446	A-70203-0333	10-89-2447	A-70203-0372	44					
46	10-88-1465	A-70203-0022	10-88-1466	A-70203-0061	10-89-1466	A-70203-0178	10-89-1467	A-70203-0217	10-89-2466	A-70203-0334	10-89-2467	A-70203-0373	46					
48	10-88-1485	A-70203-0023	10-88-1486	A-70203-0062	10-89-1486	A-70203-0179	10-89-1487	A-70203-0218	10-89-2486	A-70203-0335	10-89-2487	A-70203-0374	48					
50	10-88-1505	A-70203-0024	10-88-1506	A-70203-0063	10-89-1506	A-70203-0180	10-89-1507	A-70203-0219	10-89-2506	A-70203-0336	10-89-2507	A-70203-0375	50					
52	10-88-1525	A-70203-0025	10-88-1526	A-70203-0064	10-89-1526	A-70203-0181	10-89-1527	A-70203-0220	10-89-2526	A-70203-0337	10-89-2527	A-70203-0376	52					
54	10-88-1545	A-70203-0026	10-88-1546	A-70203-0065	10-89-1546	A-70203-0182	10-89-1547	A-70203-0221	10-89-2546	A-70203-0338	10-89-2547	A-70203-0377	54					
56	10-88-1565	A-70203-0027	10-88-1566	A-70203-0066	10-89-1566	A-70203-0183	10-89-1567	A-70203-0222	10-89-2566	A-70203-0339	10-89-2567	A-70203-0378	56					
58	10-88-1585	A-70203-0028	10-88-1586	A-70203-0067	10-89-1586	A-70203-0184	10-89-1587	A-70203-0223	10-89-2586	A-70203-0340	10-89-2587	A-70203-0379	58					
60	10-88-1605	A-70203-0029	10-88-1606	A-70203-0068	10-89-1606	A-70203-0185	10-89-1607	A-70203-0224	10-89-2606	A-70203-0341	10-89-2607	A-70203-0380	60					
62	10-88-1625	A-70203-0030	10-88-1626	A-70203-0069	10-89-1626	A-70203-0186	10-89-1627	A-70203-0225	10-89-2626	A-70203-0342	10-89-2627	A-70203-0381	62					
64	10-88-1645	A-70203-0031	10-88-1646	A-70203-0070	10-89-1646	A-70203-0187	10-89-1647	A-70203-0226	10-89-2646	A-70203-0343	10-89-2647	A-70203-0382	64					
66	10-88-1665	A-70203-0032	10-88-1666	A-70203-0071	10-89-1666	A-70203-0188	10-89-1667	A-70203-0227	10-89-2666	A-70203-0344	10-89-2667	A-70203-0383	66					
68	10-88-1685	A-70203-0033	10-88-1686	A-70203-0072	10-89-1686	A-70203-0189	10-89-1687	A-70203-0228	10-89-2686	A-70203-0345	10-89-2687	A-70203-0384	68					
70	10-88-1705	A-70203-0034	10-88-1706	A-70203-0073	10-89-1706	A-70203-0190	10-89-1707	A-70203-0229	10-89-2706	A-70203-0346	10-89-2707	A-70203-0385	70					
72	10-88-1725	A-70203-0035	10-88-1726	A-70203-0074	10-89-1726	A-70203-0191	10-89-1727	A-70203-0230	10-89-2726	A-70203-0347	10-89-2727	A-70203-0386	72					
74	10-88-1745	A-70203-0036	10-88-1746	A-70203-0075	10-89-1746	A-70203-0192	10-89-1747	A-70203-0231	10-89-2746	A-70203-0348	10-89-2747	A-70203-0387	74					
76	10-88-1765	A-70203-0037	10-88-1766	A-70203-0076	10-89-1766	A-70203-0193	10-89-1767	A-70203-0232	10-89-2766	A-70203-0349	10-89-2767	A-70203-0388	76					
78	10-88-1785	A-70203-0038	10-88-1786	A-70203-0077	10-89-1786	A-70203-0194	10-89-1787	A-70203-0233	10-89-2786	A-70203-0350	10-89-2787	A-70203-0389	78					
80	10-88-1805	A-70203-0039	10-88-1806	A-70203-0078	10-88-1807	A-70203-0117	10-89-1806	A-70203-0195	10-89-1807	A-70203-0234	10-89-2807	A-70203-0390	80					

D SEE SHEET 1		E SEE SHEET 1		F SEE SHEET 1		G SEE SHEET 1		H SEE SHEET 1		I SEE SHEET 1		J SEE SHEET 1	
CI SEE SHEET 1		C SEE SHEET 1		BI SEE SHEET 1		B SEE SHEET 1		A SEE SHEET 1		LTR. REVISIONS		LTR. REVISIONS	

REVISIONS

DATE

BY

SCALE

SMR

570203X2

THIS DRAWING CONTAINS INFORMATION THAT IS PROPRIETARY TO MOLEX INC. AND SHOULD NOT BE USED WITHOUT WRITTEN PERMISSION.