

Excellent Integrated System Limited

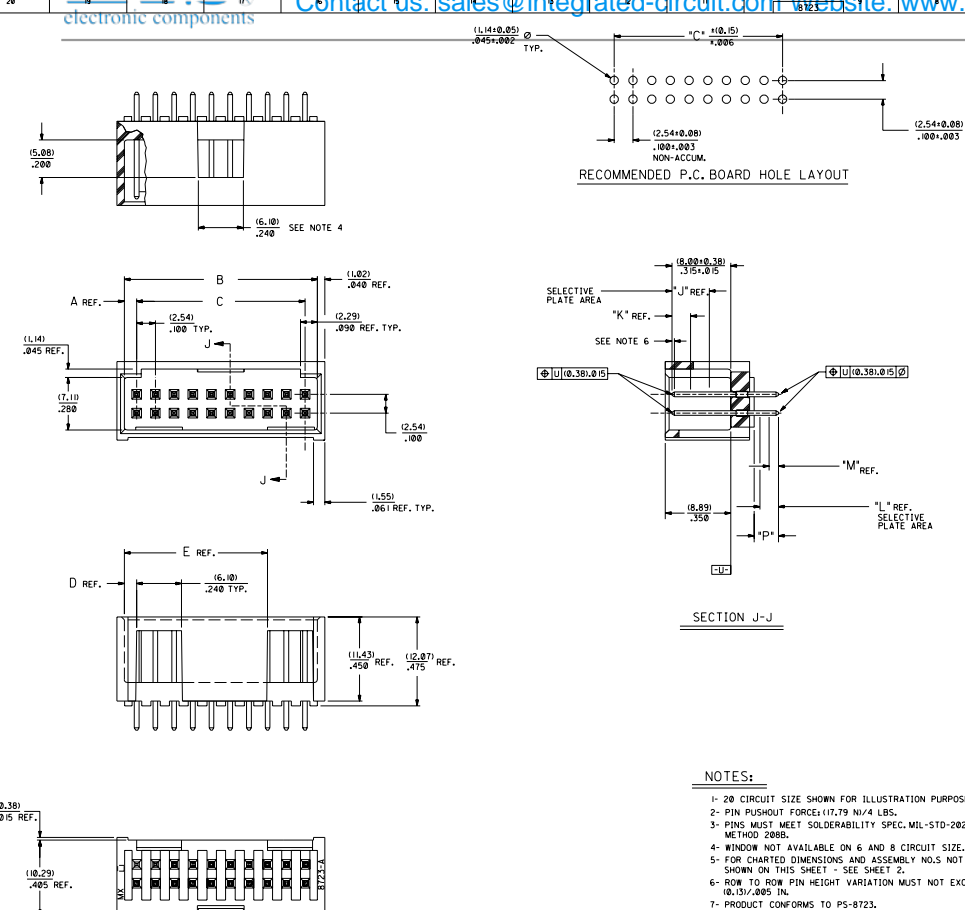
Stocking Distributor

Click to view price, real time Inventory, Delivery & Lifecycle Information:

[Molex Connector Corporation](#)
[15-41-7018](#)

For any questions, you can email us directly:

sales@integrated-circuit.com



CKT.	DIM. 'A'	DIM. 'B'	DIM. 'C'	DIM. 'D'	DIM. 'E'					
06	(1.68)	(6.43)	(5.89)	(1.68)						
08	(1.68)	(10.57)	(17.62)	(1.68)						
10	(1.68)	(11.61)	(19.67)	(1.68)						
12	(1.68)	(16.05)	(22.70)	(1.68)						
14	(1.68)	(18.59)	(25.24)	(1.68)						
16	(1.68)	(22.53)	(29.18)	(1.68)						
18	(1.68)	(26.47)	(33.12)	(1.68)						
20	(1.68)	(26.47)	(33.12)	(1.68)	(19.45)					
22	(1.68)	(28.75)	(35.40)	(1.68)	(22.80)					
24	(1.68)	(31.29)	(37.94)	(1.68)	(24.54)					
26	(1.68)	(33.83)	(40.48)	(1.68)	(27.89)					
28	(1.68)	(36.37)	(43.02)	(1.68)	(29.62)					
30	(1.68)	(38.91)	(45.56)	(1.68)	(32.16)					
32	(1.68)	(41.45)	(48.10)	(1.68)	(34.70)					
34	(1.68)	(43.99)	(50.64)	(1.68)	(37.24)					
36	(1.68)	(46.53)	(53.18)	(1.68)	(39.78)					
38	(1.68)	(49.07)	(55.72)	(1.68)	(42.32)					
40	(1.68)	(51.61)	(58.26)	(1.68)	(44.86)					
42	(1.68)	(54.15)	(60.80)	(1.68)	(47.40)					
44	(1.68)	(56.69)	(63.34)	(1.68)	(49.94)					
46	(1.68)	(59.23)	(65.88)	(1.68)	(52.48)					
48	(1.68)	(61.77)	(68.42)	(1.68)	(55.02)					
50	(1.68)	(64.31)	(70.96)	(1.68)	(57.56)					
52	(1.68)	(66.85)	(73.50)	(1.68)	(60.10)					
54	(1.68)	(69.39)	(76.04)	(1.68)	(62.64)					
56	(1.68)	(71.93)	(78.58)	(1.68)	(65.18)					
58	(1.68)	(74.47)	(81.12)	(1.68)	(67.72)					
60	(1.68)	(77.01)	(83.66)	(1.68)	(70.26)					
62	(1.68)	(79.55)	(86.20)	(1.68)	(72.80)					
64	(1.68)	(82.09)	(88.74)	(1.68)	(75.34)					
66	(1.68)	(84.63)	(91.28)	(1.68)	(77.88)					
68	(1.68)	(87.17)	(93.82)	(1.68)	(80.42)					
70	(1.68)	(89.71)	(96.36)	(1.68)	(82.96)					
72	(1.68)	(92.25)	(98.90)	(1.68)	(85.50)					

NOTES:

- 20 CIRCUIT SIZE SHOWN FOR ILLUSTRATION PURPOSES.
- PIN PUSHOUT FORCE: 17.79 N/4 LBS.
- PINS MUST MEET SOLDERABILITY SPEC. MIL-STD-202 METHOD 208B.
- WINDOW NOT AVAILABLE ON 6 AND 8 CIRCUIT SIZE.
- FOR CHARTED DIMENSIONS AND ASSEMBLY NOLS NOT SHOWN ON THIS SHEET - SEE SHEET 2.
- ROW TO ROW PIN HEIGHT VARIATION MUST NOT EXCEED 0.15/0.005 IN.
- PRODUCT CONFORMS TO PS-8723.

MATERIAL:

SHROUDED WAFER: GLASS FILLED POLYESTER, 94V-0, COLOR: BLACK.
 PINS: PHOSPHOR BRONZE.
 SEE SHEET 2 FOR FINISHES.

ASSEMBLY STYLE "A" AND "B"

ADD - 3003 OPT	REVISE ONLY ON CAD SYSTEM
ADD - 3004 OPT	REVISIONS
ADD - 3005 OPT	
ADD - 3006 OPT	
ADD - 3007 OPT	
ADD - 3008 OPT	
ADD - 3009 OPT	
ADD - 3010 OPT	
ADD - 3011 OPT	
ADD - 3012 OPT	
ADD - 3013 OPT	
ADD - 3014 OPT	
ADD - 3015 OPT	
ADD - 3016 OPT	
ADD - 3017 OPT	
ADD - 3018 OPT	
ADD - 3019 OPT	
ADD - 3020 OPT	

REVISIONS:

REV	DATE	DESCRIPTION
1	01-11-1994	ISSUE FOR PRODUCTION

SEE CHART SDA-8723



Distributor of Molex Connector Corporation: Excellent Integrated System Limited

Datasheet of 15-41-7018 - CONN HEADER 18POS .100 VERT GOLD

Contact us: sales@integrated-circuit.com Website: www.integrated-circuit.com

Main product specification table with columns for Engineering Part Number, Release for Manufacture, P Ref, Plating Type, Connector End Plating (J, K, L, M), P.C. Board End Plating, Packaging, and Tin/Plating information.

Table with 18 columns for different material options: TIN, IS GOLD, 30 GOLD, 50 GOLD.

Table with 18 columns for different material options: TIN, IS GOLD, 30 GOLD, 50 GOLD.

Table with 18 columns for different material options: TIN, IS GOLD, 30 GOLD, 50 GOLD.

Table with 18 columns for different material options: TIN, IS GOLD, 30 GOLD, 50 GOLD.

Table with 18 columns for different material options: TIN, IS GOLD, 30 GOLD, 50 GOLD.

Table with 18 columns for different material options: TIN, IS GOLD, 30 GOLD, 50 GOLD.

Table with 18 columns for different material options: TIN, IS GOLD, 30 GOLD, 50 GOLD.

Table with 18 columns for different material options: TIN, IS GOLD, 30 GOLD, 50 GOLD.

Table with 18 columns for different material options: TIN, IS GOLD, 30 GOLD, 50 GOLD.

Table with 18 columns for different material options: TIN, IS GOLD, 30 GOLD, 50 GOLD.

Table with 18 columns for different material options: TIN, IS GOLD, 30 GOLD, 50 GOLD.

Table with 18 columns for different material options: TIN, IS GOLD, 30 GOLD, 50 GOLD.

Table with 18 columns for different material options: TIN, IS GOLD, 30 GOLD, 50 GOLD.

Table with 18 columns for different material options: TIN, IS GOLD, 30 GOLD, 50 GOLD.

Table with 18 columns for different material options: TIN, IS GOLD, 30 GOLD, 50 GOLD.

Table with 18 columns for different material options: TIN, IS GOLD, 30 GOLD, 50 GOLD.

Table with 18 columns for different material options: TIN, IS GOLD, 30 GOLD, 50 GOLD.

Table with 18 columns for different material options: TIN, IS GOLD, 30 GOLD, 50 GOLD.

REVISIONS table with columns for LTR, REVISIONS, LTR, REVISIONS.

SALES ASSEMBLY WAFER-STRAIGHT MET FULLY SHROUNDED .100 GRID-FOR USE W/ .025 SQ. PINS WITH .866 END WALLS

SEE CHART SDA-8723-*****

REVISIONS table with columns for LTR, REVISIONS, LTR, REVISIONS.