



## Excellent Integrated System Limited

Stocking Distributor

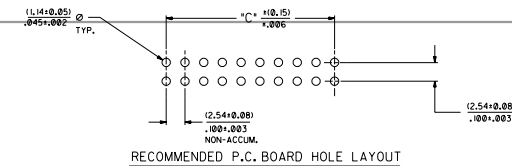
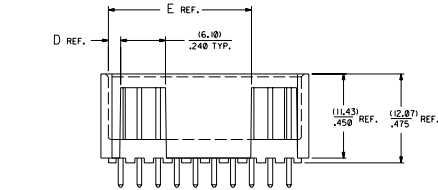
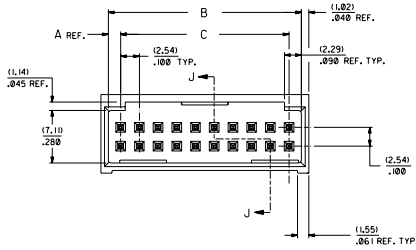
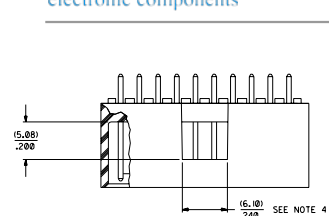
Click to view price, real time Inventory, Delivery & Lifecycle Information:

[Molex Connector Corporation](#)

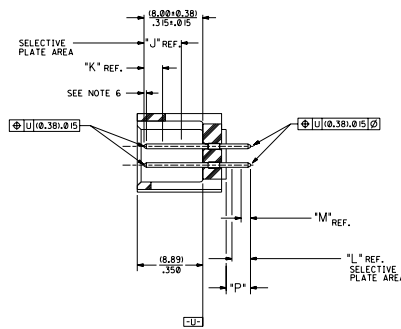
[15-41-7034](#)

For any questions, you can email us directly:

[sales@integrated-circuit.com](mailto:sales@integrated-circuit.com)



**RECOMMENDED P.C. BOARD HOLE LAYOUT**



**SECTION J-J**

NOTES:

- 1- 20 CIRCUIT SIZE SHOWN FOR ILLUSTRATION PURPOSES.
- 2- PIN PUSHOUT FORCE: (17.79 N) 4 LBS.
- 3- PINS MUST MEET SOLDERABILITY SPEC. MIL-STD-202 METHOD 208B.
- 4- WINDOW NOT AVAILABLE ON 6 AND 8 CIRCUIT SIZE.
- 5- FOR CHARTED DIMENSIONS AND ASSEMBLY NOLS NOT SHOWN ON THIS SHEET - SEE SHEET 2.
- 6- ROW TO ROW PIN HEIGHT VARIATION MUST NOT EXCEED (0.15) .005 IN.
- 7- PRODUCT CONFORMS TO PS-8723.

CKT.	DIM. "A"	DIM. "B"	DIM. "C"	DIM. "D"	DIM. "E"						
06	(1.68)	(6.43)	(5.00)	(1.68)	(1.68)						
08	(1.68)	(10.37)	(7.62)	(1.68)	(1.68)						
10	(1.68)	(11.51)	(8.25)	(1.68)	(1.68)						
12	(1.68)	(16.00)	(12.70)	(1.68)	(1.68)						
14	(1.68)	(18.53)	(15.24)	(1.68)	(1.68)						
16	(1.68)	(21.53)	(17.78)	(1.68)	(1.68)						
18	(1.68)	(25.53)	(20.32)	(1.68)	(1.68)						
20	(1.68)	(26.70)	(22.86)	(1.68)	(1.68)	(19.45)					
22	(1.68)	(28.75)	(25.40)	(1.68)	(1.68)	(22.00)					
24	(1.68)	(31.29)	(27.94)	(1.68)	(1.68)	(24.54)					
26	(1.68)	(33.33)	(30.48)	(1.68)	(1.68)	(27.08)					
28	(1.68)	(35.37)	(33.02)	(1.68)	(1.68)	(29.62)					
30	(1.68)	(38.30)	(35.56)	(1.68)	(1.68)	(32.16)					
32	(1.68)	(41.44)	(38.10)	(1.68)	(1.68)	(34.70)					
34	(1.68)	(43.99)	(40.64)	(1.68)	(1.68)	(37.24)					
36	(1.68)	(46.53)	(43.18)	(1.68)	(1.68)	(39.78)					
38	(1.68)	(49.07)	(45.72)	(1.68)	(1.68)	(42.32)					
40	(1.68)	(51.61)	(48.26)	(1.68)	(1.68)	(44.86)					
42	(1.68)	(54.15)	(50.80)	(1.68)	(1.68)	(47.40)					
44	(1.68)	(56.69)	(53.34)	(1.68)	(1.68)	(49.94)					
46	(1.68)	(59.23)	(55.88)	(1.68)	(1.68)	(52.48)					
48	(1.68)	(61.77)	(58.42)	(1.68)	(1.68)	(55.02)					
50	(1.68)	(64.31)	(60.96)	(1.68)	(1.68)	(57.56)					
52	(1.68)	(66.85)	(63.50)	(1.68)	(1.68)	(60.10)					
54	(1.68)	(69.39)	(66.04)	(1.68)	(1.68)	(62.64)					
56	(1.68)	(71.93)	(68.58)	(1.68)	(1.68)	(65.18)					
58	(1.68)	(74.47)	(71.12)	(1.68)	(1.68)	(67.72)					
60	(1.68)	(77.01)	(73.66)	(1.68)	(1.68)	(70.26)					
62	(1.68)	(79.55)	(76.20)	(1.68)	(1.68)	(72.80)					
64	(1.68)	(82.09)	(78.74)	(1.68)	(1.68)	(75.34)					
66	(1.68)	(84.63)	(81.28)	(1.68)	(1.68)	(77.88)					
68	(1.68)	(87.17)	(83.82)	(1.68)	(1.68)	(80.42)					
70	(1.68)	(89.71)	(86.36)	(1.68)	(1.68)	(82.96)					
72	(1.68)	(92.25)	(88.90)	(1.68)	(1.68)	(85.50)					

MATERIAL:

SHROUDED WAFER: GLASS FILLED POLYESTER, 94V-0; COLOR: BLACK.  
WAFER: PHOSPHOR BRONZE.  
SEE SHEET 2 FOR FINISHES.

**ASSEMBLY STYLE "A" AND "B"**

U	ADD .0003 OPT			
T	LEAD FINISH REF. SHEET 84/07/28			
S	ADD -PWR OPTION DAMPCAN 84/41/12			
R1	ADD MOD. JATION NOTE DAMPCAN 96/02/21			
R	ADD -PWR OPTION DAMPCAN 84/41/12			
U	REMOVE TOP NO. 5 REF. P.C. NO. 14120 85-8-34			
P	ADD WINDOW NOTE REF. P.C. NO. 14120 85-8-34			
L	5-82			
Q	CHANGED MATERIAL REF. P.C. NO. 14120 85-8-34			
N	REVISION 4 REF. P.C. NO. 14120 85-8-34			
B	REVISIONS			

REV.	DATE	BY	CHKD.	APP'D.	DESCRIPTION	REVISIONS
1					REVISION ONLY ON CAD SYSTEM	

WAIVER - STRAIGHT MT. FULLY SHROUDED  
+100 GRID-FOR USE #1/.005 SQ. PINS  
WITH .066 END WALLS

MOLEX INCORPORATED

SEE CHART SDA-8723



**Distributor of Molex Connector Corporation: Excellent Integrated System Limited**  
 Datasheet of 15-41-7034 - CONN HEADER 34POS .100 VERT GOLD  
 Contact us: sales@integrated-circuit.com Website: www.integrated-circuit.com

NO. OF CKTS	TIN		TIN		IS GOLD		IS GOLD		30 GOLD		30 GOLD		50 GOLD		50 GOLD	
	EDP NUMBER	ENG NUMBER	EDP NUMBER	ENG NUMBER	EDP NUMBER	ENG NUMBER	EDP NUMBER	ENG NUMBER	EDP NUMBER	ENG NUMBER	EDP NUMBER	ENG NUMBER	EDP NUMBER	ENG NUMBER	EDP NUMBER	ENG NUMBER
06	15-42-6006	A-8723-06A164	15-42-6106	A-8723-06B164	15-29-6006	A-8723-06A571	15-29-6106	A-8723-06B571	15-41-7006	A-8723-06A574	15-41-7106	A-8723-06B574	A-8723-06A596			
08	15-42-6008	A-8723-08A164	15-42-6108	A-8723-08B164	15-29-6008	A-8723-08A571	15-29-6108	A-8723-08B571	15-41-7008	A-8723-08A574	15-41-7108	A-8723-08B574	A-8723-08A596			
10	15-42-6010	A-8723-10A164	15-42-6110	A-8723-10B164	15-29-6010	A-8723-10A571	15-29-6110	A-8723-10B571	15-41-7010	A-8723-10A574	15-41-7110	A-8723-10B574	A-8723-10A596			
12	15-42-6012	A-8723-12A164	15-42-6112	A-8723-12B164	15-29-6012	A-8723-12A571	15-29-6112	A-8723-12B571	15-41-7012	A-8723-12A574	15-41-7112	A-8723-12B574	A-8723-12A596			
14	15-42-6014	A-8723-14A164	15-42-6114	A-8723-14B164	15-29-6014	A-8723-14A571	15-29-6114	A-8723-14B571	15-41-7014	A-8723-14A574	15-41-7114	A-8723-14B574	A-8723-14A596			
16	15-42-6016	A-8723-16A164	15-42-6116	A-8723-16B164	15-29-6016	A-8723-16A571	15-29-6116	A-8723-16B571	15-41-7016	A-8723-16A574	15-41-7116	A-8723-16B574	A-8723-16A596			
18	15-42-6018	A-8723-18A164	15-42-6118	A-8723-18B164	15-29-6018	A-8723-18A571	15-29-6118	A-8723-18B571	15-41-7018	A-8723-18A574	15-41-7118	A-8723-18B574	A-8723-18A596			
20	15-42-6020	A-8723-20A164	15-42-6120	A-8723-20B164	15-29-6020	A-8723-20A571	15-29-6120	A-8723-20B571	15-41-7020	A-8723-20A574	15-41-7120	A-8723-20B574	A-8723-20A596			
22	15-42-6022	A-8723-22A164	15-42-6122	A-8723-22B164	15-29-6022	A-8723-22A571	15-29-6122	A-8723-22B571	15-41-7022	A-8723-22A574	15-41-7122	A-8723-22B574	A-8723-22A596			
24	15-42-6024	A-8723-24A164	15-42-6124	A-8723-24B164	15-29-6024	A-8723-24A571	15-29-6124	A-8723-24B571	15-41-7024	A-8723-24A574	15-41-7124	A-8723-24B574	A-8723-24A596			
26	15-42-6026	A-8723-26A164	15-42-6126	A-8723-26B164	15-29-6026	A-8723-26A571	15-29-6126	A-8723-26B571	15-41-7026	A-8723-26A574	15-41-7126	A-8723-26B574	A-8723-26A596			
28	15-42-6028	A-8723-28A164	15-42-6128	A-8723-28B164	15-29-6028	A-8723-28A571	15-29-6128	A-8723-28B571	15-41-7028	A-8723-28A574	15-41-7128	A-8723-28B574	A-8723-28A596			
30	15-42-6030	A-8723-30A164	15-42-6130	A-8723-30B164	15-29-6030	A-8723-30A571	15-29-6130	A-8723-30B571	15-41-7030	A-8723-30A574	15-41-7130	A-8723-30B574	A-8723-30A596			
32	15-42-6032	A-8723-32A164	15-42-6132	A-8723-32B164	15-29-6032	A-8723-32A571	15-29-6132	A-8723-32B571	15-41-7032	A-8723-32A574	15-41-7132	A-8723-32B574	A-8723-32A596			
34	15-42-6034	A-8723-34A164	15-42-6134	A-8723-34B164	15-29-6034	A-8723-34A571	15-29-6134	A-8723-34B571	15-41-7034	A-8723-34A574	15-41-7134	A-8723-34B574	A-8723-34A596			
36	15-42-6036	A-8723-36A164	15-42-6136	A-8723-36B164	15-29-6036	A-8723-36A571	15-29-6136	A-8723-36B571	15-41-7036	A-8723-36A574	15-41-7136	A-8723-36B574	A-8723-36A596			
38	15-42-6038	A-8723-38A164	15-42-6138	A-8723-38B164	15-29-6038	A-8723-38A571	15-29-6138	A-8723-38B571	15-41-7038	A-8723-38A574	15-41-7138	A-8723-38B574	A-8723-38A596			
40	15-42-6040	A-8723-40A164	15-42-6140	A-8723-40B164	15-29-6040	A-8723-40A571	15-29-6140	A-8723-40B571	15-41-7040	A-8723-40A574	15-41-7140	A-8723-40B574	A-8723-40A596			
42	15-42-6042	A-8723-42A164	15-42-6142	A-8723-42B164	15-29-6042	A-8723-42A571	15-29-6142	A-8723-42B571	15-41-7042	A-8723-42A574	15-41-7142	A-8723-42B574	A-8723-42A596			
44	15-42-6044	A-8723-44A164	15-42-6144	A-8723-44B164	15-29-6044	A-8723-44A571	15-29-6144	A-8723-44B571	15-41-7044	A-8723-44A574	15-41-7144	A-8723-44B574	A-8723-44A596			
46	15-42-6046	A-8723-46A164	15-42-6146	A-8723-46B164	15-29-6046	A-8723-46A571	15-29-6146	A-8723-46B571	15-41-7046	A-8723-46A574	15-41-7146	A-8723-46B574	A-8723-46A596			
48	15-42-6048	A-8723-48A164	15-42-6148	A-8723-48B164	15-29-6048	A-8723-48A571	15-29-6148	A-8723-48B571	15-41-7048	A-8723-48A574	15-41-7148	A-8723-48B574	A-8723-48A596			
50	15-42-6050	A-8723-50A164	15-42-6150	A-8723-50B164	15-29-6050	A-8723-50A571	15-29-6150	A-8723-50B571	15-41-7050	A-8723-50A574	15-41-7150	A-8723-50B574	A-8723-50A596			
52	15-42-6052	A-8723-52A164	15-42-6152	A-8723-52B164	15-29-6052	A-8723-52A571	15-29-6152	A-8723-52B571	15-41-7052	A-8723-52A574	15-41-7152	A-8723-52B574	A-8723-52A596			
54	15-42-6054	A-8723-54A164	15-42-6154	A-8723-54B164	15-29-6054	A-8723-54A571	15-29-6154	A-8723-54B571	15-41-7054	A-8723-54A574	15-41-7154	A-8723-54B574	A-8723-54A596			
56	15-42-6056	A-8723-56A164	15-42-6156	A-8723-56B164	15-29-6056	A-8723-56A571	15-29-6156	A-8723-56B571	15-41-7056	A-8723-56A574	15-41-7156	A-8723-56B574	A-8723-56A596			
58	15-42-6058	A-8723-58A164	15-42-6158	A-8723-58B164	15-29-6058	A-8723-58A571	15-29-6158	A-8723-58B571	15-41-7058	A-8723-58A574	15-41-7158	A-8723-58B574	A-8723-58A596			
60	15-42-6060	A-8723-60A164	15-42-6160	A-8723-60B164	15-29-6060	A-8723-60A571	15-29-6160	A-8723-60B571	15-41-7060	A-8723-60A574	15-41-7160	A-8723-60B574	A-8723-60A596			
62	15-42-6062	A-8723-62A164	15-42-6162	A-8723-62B164	15-29-6062	A-8723-62A571	15-29-6162	A-8723-62B571	15-41-7062	A-8723-62A574	15-41-7162	A-8723-62B574	A-8723-62A596			
64	15-42-6064	A-8723-64A164	15-42-6164	A-8723-64B164	15-29-6064	A-8723-64A571	15-29-6164	A-8723-64B571	15-41-7064	A-8723-64A574	15-41-7164	A-8723-64B574	A-8723-64A596			
66	15-42-6066	A-8723-66A164	15-42-6166	A-8723-66B164	15-29-6066	A-8723-66A571	15-29-6166	A-8723-66B571	15-41-7066	A-8723-66A574	15-41-7166	A-8723-66B574	A-8723-66A596			
68	15-42-6068	A-8723-68A164	15-42-6168	A-8723-68B164	15-29-6068	A-8723-68A571	15-29-6168	A-8723-68B571	15-41-7068	A-8723-68A574	15-41-7168	A-8723-68B574	A-8723-68A596			
70	15-42-6070	A-8723-70A164	15-42-6170	A-8723-70B164	15-29-6070	A-8723-70A571	15-29-6170	A-8723-70B571	15-41-7070	A-8723-70A574	15-41-7170	A-8723-70B574	A-8723-70A596			
72	15-42-6072	A-8723-72A164	15-42-6172	A-8723-72B164	15-29-6072	A-8723-72A571	15-29-6172	A-8723-72B571	15-41-7072	A-8723-72A574	15-41-7172	A-8723-72B574	A-8723-72A596			

**PLATING:**  
 TIN .000150 MINIMUM TIN OVER  
 .000050 MINIMUM NICKEL PLATE.  
 15 GOLD .000015 MINIMUM GOLD PLATE IN SELECTED AREA AND .000075 MINIMUM TIN IN SELECTED AREA OVER .000050 MINIMUM NICKEL OVER-ALL.  
 30 GOLD .000030 MINIMUM GOLD PLATE IN SELECTED AREA AND .000075 MINIMUM TIN IN SELECTED AREA OVER .000050 MINIMUM NICKEL OVER-ALL.  
 50 GOLD .000050 MINIMUM GOLD PLATE IN SELECTED AREA AND .000075 MINIMUM TIN IN SELECTED AREA OVER .000050 MINIMUM NICKEL OVER-ALL.

REVISIONS

REV	DESCRIPTION	DATE	BY	CHKD
1	INITIAL RELEASE			
2	REVISION			

SALES ASSEMBLY  
 WAFER-STRAIGHT MET FULLY SHROUNDED  
 .100 GRID-FOR USE W/ .025 SQ. PINS  
 WITH .866 END WALLS

MOLEX INCORPORATED  
 1300 S. HARRIS AVE.  
 BETHLEHEM, PA 18015-1098

SEE CHART SDA-8723-\*\*\*\*\*