

## Excellent Integrated System Limited

Stocking Distributor

Click to view price, real time Inventory, Delivery & Lifecycle Information:

[Molex Connector Corporation](#)  
[0015291024](#)

For any questions, you can email us directly:

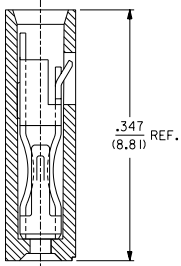
[sales@integrated-circuit.com](mailto:sales@integrated-circuit.com)

EDP NO.	ENG NO.	FINISH
15-38-1024	A-7859-2164	TIN OVERALL
15-29-1024	A-7859-2554	15 GOLD
15-29-1026	A-7859-2561	30 GOLD

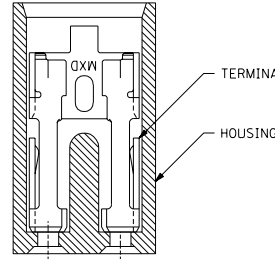
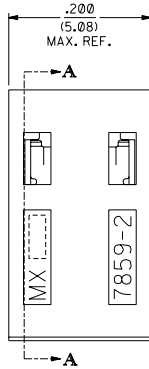
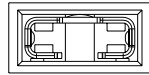
**PART IDENTIFICATION:**

A-7859-2\*\*\*

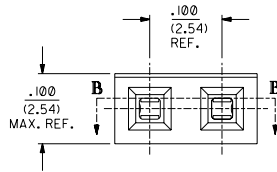
PLATING SPECIFICATION



**SECTION A-A**



**SECTION B-B**



**NOTES:**

1. THIS PRODUCT CONFORMS TO MOLEX PRODUCT SPEC. PS-7859.
2. TO BE USED WITH .025/(0.64) SQUARE PINS.
3. MINIMUM MATING PIN LENGTH: .200/(5.08)
4. PRODUCT IS PACKAGED IN BOXES PER PK-70873-0815

**FINISH SPECIFICATION**

- TIN OVERALL - .000150 MINIMUM TIN PLATE OVER .000050 MINIMUM NICKEL UNDERPLATE.
- 15 GOLD - .000015 MINIMUM GOLD PLATE IN SELECT AREA OVER .000050 MINIMUM NICKEL UNDERPLATE OVERALL.
- 30 GOLD - .000030 MINIMUM GOLD PLATE IN SELECT AREA OVER .000050 MINIMUM NICKEL UNDERPLATE OVERALL.

**MATERIAL:**

HOUSING: GLASS FILLED POLYESTER; 94V-0; COLOR: BLACK.  
TERMINAL: PHOSPHOR BRONZE ALLOY

**NOTE FOR LEAD FREE CONVERSION:**

THE PRIMARY SHIPPING CARTON WILL BE LABELED "COMPLIANT TO RoHS DIRECTIVE 2002/95/EC AND ELV ANNEX II OF DIRECTIVE 2000/53/EC". CARTONS WITHOUT THIS LABEL MAY CONTAIN PRODUCT WITH LEAD.

7859

REV.	DESCRIPTION
D	LEAD FREE CONV. PER EN 12064-2153 READAMS 04/08/21
C1	ADDED PKG. SPEC. PER EN 170786 WHEATSTON 9/12/1
C	CHANGED MATERIAL PER ECR #U51514 95/06/02 CAC
B	REVISED ENG. NOS. PER ECR # U31581 10/26/93 REED
A	RELEASED PER ECR # U30372 03/11/93 REED
3	REVISE GOLD PLTG. PER ECR # U12055 10/18/91 AAB
2	REVISE TERM. PLTG. PER ECR # U11096 06/18/91 AAB
1	"X" RELEASE PER ECR # U10445 02/07/91 AAB

DIMENSIONS SHOWN (METRIC) INCH UNLESS OTHERWISE SPECIFIED TOLERANCES: FRACTIONS ± 1/16"		MFG. SH.	REV.	LTR.	REVISIONS												
<table border="1"> <thead> <tr> <th></th> <th>INCH</th> <th>METRIC</th> </tr> </thead> <tbody> <tr> <td>± PLATE</td> <td>± .005</td> <td>---</td> </tr> <tr> <td>± PLATE</td> <td>± .01</td> <td>± 0.13</td> </tr> <tr> <td>± PLATE</td> <td>---</td> <td>± 0.25</td> </tr> </tbody> </table>			INCH	METRIC	± PLATE	± .005	---	± PLATE	± .01	± 0.13	± PLATE	---	± 0.25	TITLE: SALES ASSY - SHUNT 2-CIRCUIT TERMINAL W/OPEN END SHEET NO. 1 OF 1 DATE 02/07/91 MOLEX INCORPORATED PART NO. SDA-7859-2***N SEE CHART FILE NAME: S7859X1 THIS DRAWING CONTAINS INFORMATION THAT IS PROPRIETARY TO MOLEX. NO. AND SHOULD NOT BE USED WITHOUT WRITTEN PERMISSION. DAIC			
	INCH	METRIC															
± PLATE	± .005	---															
± PLATE	± .01	± 0.13															
± PLATE	---	± 0.25															
DRG. BY: AAB	CHKD. BY: BT	SCALE: 10:1															
APP'D. BY: MJM																	