

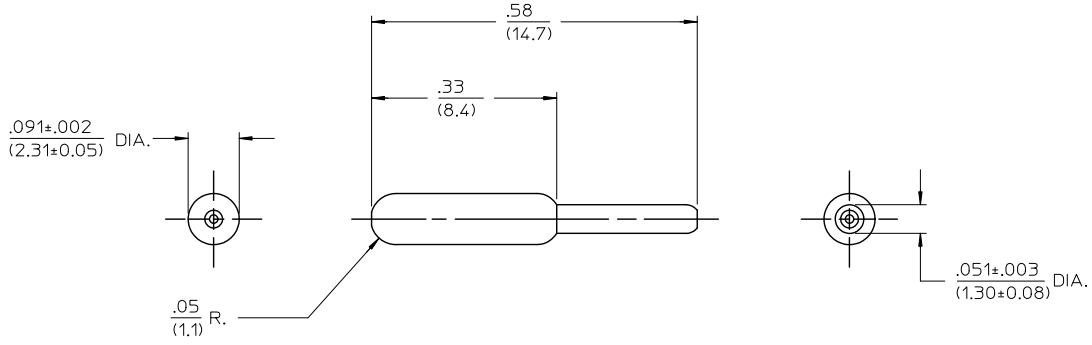
Excellent Integrated System Limited

Stocking Distributor

Click to view price, real time Inventory, Delivery & Lifecycle Information:

[Molex Connector Corporation](#)
[0016060002](#)

For any questions, you can email us directly:
sales@integrated-circuit.com



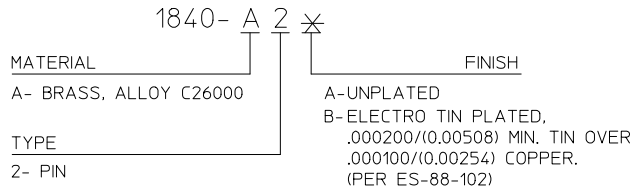
| | | | | | | | | |
|--|--------------------------------------|---------------------------------------|--------|--------------------------|--|--|---------------------------|------------------------|
| REDW/REM DRAIN HOLE EC NO: IUCP2004-2212 DRAWN BY: CHYKOF SMITH APPROVED BY: CHYKOF SMITH | QUALITY SYMBOLS ▽=0 ▽=0 ▽=0 | GENERAL TOLERANCES (UNLESS SPECIFIED) | | DIMENSION STYLE IN/MM | | SCALE 6:1 | DESIGN UNITS INCH | THIRD ANGLE PROJECTION |
| | | mm | INCH | DRAWN BY GWC | DATE 1992/01/03 | TITLE TERMINAL, PIN & SOCKET P.C. TAIL, FOR .093 SERIES HEADERS | | |
| REV | DESCRIPTION | 4 PLACES | ± .010 | ± .010 | CHECKED BY RW | DATE 1992/01/03 | MATERIAL NO. SEE CHART | |
| | | 3 PLACES | ± .025 | ± .014 | APPROVED BY FSMITH | DATE 2011/09/14 | DOCUMENT NO. SD-1840-* | |
| | | 2 PLACES | ± 0.36 | ± .014 | ANGULAR ±1/2° | | MOLEX INCORPORATED | |
| | | 1 PLACE | ± .010 | ± .014 | DRAFT WHERE APPLICABLE MUST REMAIN WITHIN DIMENSIONS | | SHEET NO. 1 OF 2 | |
| | | | | SIZE B | | THIS DRAWING CONTAINS INFORMATION THAT IS PROPRIETARY TO MOLEX INCORPORATED AND SHOULD NOT BE USED WITHOUT WRITTEN PERMISSION | | |

| | | | | | | | | | |
|------------|----------|----------|------|--------|---|---|---|---|---|
| 10 | 9 | 8 | 7 | 6 | 5 | 4 | 3 | 2 | 1 |
| PART NO. | ENG. NO. | MATERIAL | TYPE | FINISH | | | | | |
| 16-06-0052 | 1840-A2A | A | 2 | A | | | | | |
| 16-06-0002 | 1840-A2B | A | 2 | B | | | | | |

NOTES:

1. MATERIAL: SEE LEGEND
2. FINISH: SEE LEGEND
3. PRODUCT SPECIFICATION: N/A
4. PACKAGING SPECIFICATION: N/A
5. THESE TERMINALS ARE USED FOR BOTH THE 1840 AND 3099 ASSEMBLIES.

LEGEND

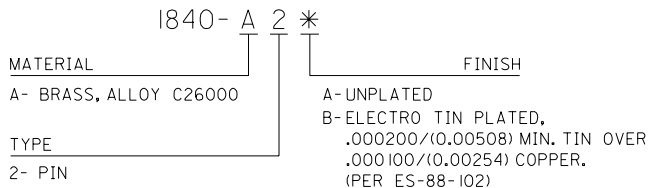


| SEE SHEET ONE E.C. NO.: UCP2004-2212 DRAWN BY: DRWINHOLTS CHK'D BY: CHKDFSMITH APPR'D BY: APPRFSMITH 2004/06/17 2011/09/14 | QUALITY SYMBOLS | GENERAL TOLERANCES (UNLESS SPECIFIED) | DIMENSION STYLE IN/MM | SCALE 1:1 | DESIGN UNITS INCH | THIRD ANGLE PROJECTION | | | | | | | | | | | | | | | | | | | | | | | | | | | |
|--|--|---|---------------------------------|------------------|---|------------------------|--------|--------|----------|--------|--------|----------|--------|--------|---------|--------|--------|---|----------|------|-----|------------|------------|------|----|------------|-------------|------|--------|------------|-------|--|--|
| | $\nabla=0$ $\nabla=0$ $\nabla=0$ | <table border="1"> <tr> <th></th> <th>mm</th> <th>INCH</th> </tr> <tr> <td>4 PLACES</td> <td>± .---</td> <td>± .---</td> </tr> <tr> <td>3 PLACES</td> <td>± .---</td> <td>± .010</td> </tr> <tr> <td>2 PLACES</td> <td>± 0.25</td> <td>± .014</td> </tr> <tr> <td>1 PLACE</td> <td>± 0.36</td> <td>± .---</td> </tr> </table> | | mm | INCH | 4 PLACES | ± .--- | ± .--- | 3 PLACES | ± .--- | ± .010 | 2 PLACES | ± 0.25 | ± .014 | 1 PLACE | ± 0.36 | ± .--- | <table border="1"> <tr> <td>DRAWN BY</td> <td>DATE</td> </tr> <tr> <td>GWC</td> <td>1992/01/03</td> </tr> <tr> <td>CHECKED BY</td> <td>DATE</td> </tr> <tr> <td>RW</td> <td>1992/01/03</td> </tr> <tr> <td>APPROVED BY</td> <td>DATE</td> </tr> <tr> <td>FSMITH</td> <td>2011/09/14</td> </tr> </table> | DRAWN BY | DATE | GWC | 1992/01/03 | CHECKED BY | DATE | RW | 1992/01/03 | APPROVED BY | DATE | FSMITH | 2011/09/14 | TITLE | | |
| | | mm | INCH | | | | | | | | | | | | | | | | | | | | | | | | | | | | | | |
| | 4 PLACES | ± .--- | ± .--- | | | | | | | | | | | | | | | | | | | | | | | | | | | | | | |
| 3 PLACES | ± .--- | ± .010 | | | | | | | | | | | | | | | | | | | | | | | | | | | | | | | |
| 2 PLACES | ± 0.25 | ± .014 | | | | | | | | | | | | | | | | | | | | | | | | | | | | | | | |
| 1 PLACE | ± 0.36 | ± .--- | | | | | | | | | | | | | | | | | | | | | | | | | | | | | | | |
| DRAWN BY | DATE | | | | | | | | | | | | | | | | | | | | | | | | | | | | | | | | |
| GWC | 1992/01/03 | | | | | | | | | | | | | | | | | | | | | | | | | | | | | | | | |
| CHECKED BY | DATE | | | | | | | | | | | | | | | | | | | | | | | | | | | | | | | | |
| RW | 1992/01/03 | | | | | | | | | | | | | | | | | | | | | | | | | | | | | | | | |
| APPROVED BY | DATE | | | | | | | | | | | | | | | | | | | | | | | | | | | | | | | | |
| FSMITH | 2011/09/14 | | | | | | | | | | | | | | | | | | | | | | | | | | | | | | | | |
| | DRAFT WHERE APPLICABLE MUST REMAIN WITHIN DIMENSIONS | MATERIAL NO. SEE CHART SIZE B | MOLEX INCORPORATED SD-1840-* | SHEET NO. 2 OF 2 | THIS DRAWING CONTAINS INFORMATION THAT IS PROPRIETARY TO MOLEX INCORPORATED AND SHOULD NOT BE USED WITHOUT WRITTEN PERMISSION | | | | | | | | | | | | | | | | | | | | | | | | | | | | |



| PART NO. | ENG. NO. | MATERIAL | TYPE | FINISH |
|------------|----------|----------|------|--------|
| 16-06-0052 | 1840-A2A | A | 2 | A |
| 16-06-0002 | 1840-A2B | A | 2 | B |

LEGEND



NOTES:

- I. THESE TERMINALS ARE USED FOR BOTH THE 1840 AND 3099 ASSEMBLIES.
- A DRAIN HOLE, OVAL IN APPEARANCE, OPPOSITE THE SEAM SIDE, IS ALLOWED.

| DIMENSIONS SHOWN (METRIC/INCH) | | UNLESS OTHERWISE SPECIFIED TOLERANCES: ANGULAR ± 1/2° | |
|--------------------------------|-----|---|--------|
| | | INCH | METRIC |
| 3 PLACE | ± | --- | --- |
| 2 PLACE | ± | --- | --- |
| 1 PLACE | --- | ± | --- |

| | |
|----------------------|----------------------|
| DRWG. BY: <i>OK</i> | CHK'D. BY: <i>RW</i> |
| APP'D. BY: <i>RS</i> | SCALE: <i>N/A</i> |

| | | | |
|-----------|------|-----------|------|
| REVISIONS | LTR. | REVISIONS | LTR. |
| | | | |

= 0 = 0 REVISE ONLY ON CAD SYSTEM
 TITLE: TERMINAL, PIN P.C. TAIL, FOR .093 SERIES HEADERS
 MOLEX INCORPORATED SHEET NO. 2 DATE 12/16/91
 LISLE, ILL. 60532 U.S.A.
 PART NO. SEE CHART DRWG. NO. SD-1840-*
 FILE NAME: SD1840X2 DGN THIS DRAWING CONTAINS INFORMATION THAT IS PROPRIETARY TO MOLEX INC. AND SHOULD NOT BE USED WITHOUT WRITTEN PERMISSION. DIV. CP SIZE B

10 9 8 7 6 5 4 3 2 1