

## Excellent Integrated System Limited

Stocking Distributor

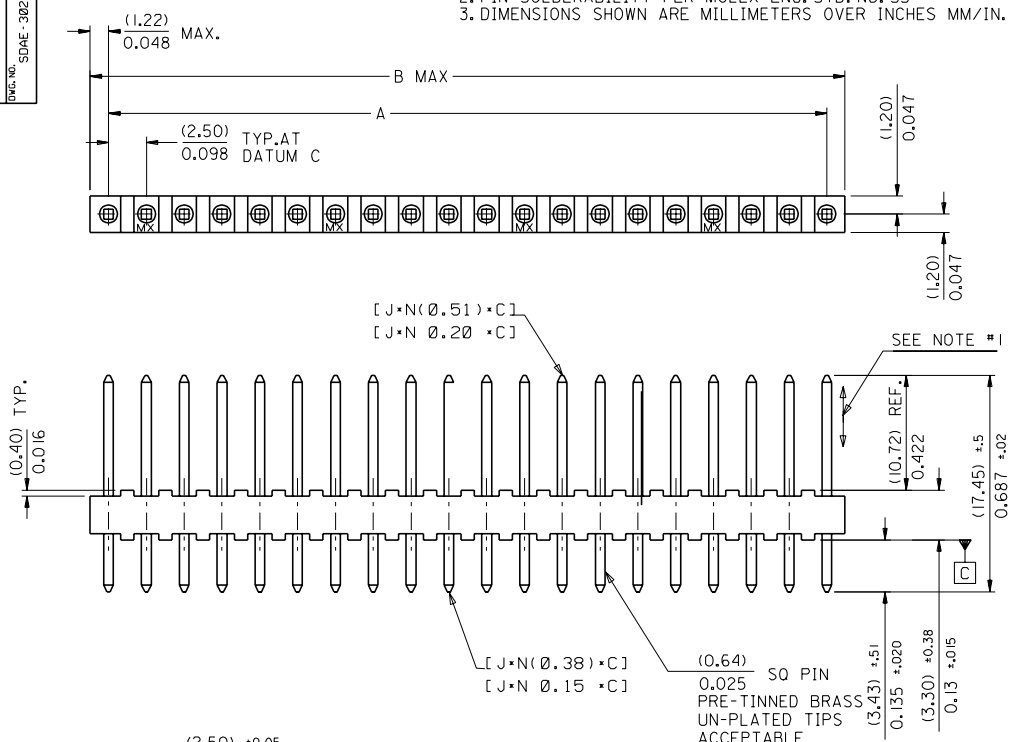
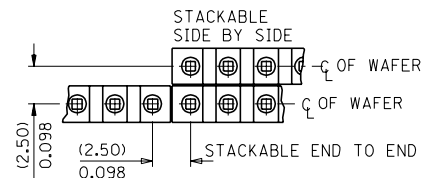
Click to view price, real time Inventory, Delivery & Lifecycle Information:

[Molex Connector Corporation](#)  
[0022031032](#)

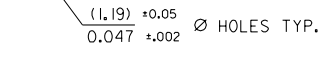
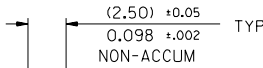
For any questions, you can email us directly:

[sales@integrated-circuit.com](mailto:sales@integrated-circuit.com)

NOTES:  
 1. PIN PUSH OUT FORCE: 2 LBS. MIN.  
 2. PIN SOLDERABILITY PER MOLEX ENG. STD. No. 53  
 3. DIMENSIONS SHOWN ARE MILLIMETERS OVER INCHES MM/IN.



PART No.	ENG. No.	NO OF PINS	DIM. A	DIM. B
22-03-1202	AE-3022-20B	20	(47.5) ±0.25 1.870 ±0.010	(49.9) ±0.25 1.965 ±0.010
-1192	-19B	19	(45.0) ±0.23 1.772 ±0.009	(47.4) ±0.23 1.866 ±0.009
-1182	-18B	18	(42.5) ±0.23 1.674 ±0.009	(44.9) ±0.23 1.768 ±0.009
-1172	-17B	17	(40.0) ±0.20 1.575 ±0.008	(42.4) ±0.20 1.669 ±0.008
-1162	-16B	16	(37.5) ±0.20 1.477 ±0.008	(39.9) ±0.20 1.571 ±0.008
-1152	-15B	15	(35.0) ±0.20 1.378 ±0.008	(37.4) ±0.20 1.472 ±0.008
-1142	-14B	14	(32.5) ±0.18 1.280 ±0.007	(34.9) ±0.18 1.374 ±0.007
-1132	-13B	13	(30.0) ±0.18 1.181 ±0.007	(32.4) ±0.18 1.276 ±0.007
-1122	-12B	12	(27.5) ±0.18 1.083 ±0.007	(29.9) ±0.18 1.177 ±0.007
-1112	-11B	11	(25.0) ±0.15 0.984 ±0.006	(27.4) ±0.15 1.079 ±0.006
-1102	-10B	10	(22.5) ±0.15 0.886 ±0.006	(24.9) ±0.15 0.980 ±0.006
-1092	-9B	9	(20.0) ±0.13 0.787 ±0.005	(22.4) ±0.13 0.882 ±0.005
-1082	-8B	8	(17.5) ±0.13 0.689 ±0.005	(19.9) ±0.13 0.783 ±0.005
-1072	-7B	7	(15.0) ±0.13 0.591 ±0.005	(17.4) ±0.13 0.685 ±0.005
-1062	-6B	6	(12.5) ±0.10 0.492 ±0.004	(14.9) ±0.10 0.587 ±0.004
-1052	-5B	5	(10.0) ±0.10 0.394 ±0.004	(12.4) ±0.10 0.488 ±0.004
-1042	-4B	4	(7.5) ±0.10 0.295 ±0.004	(9.9) ±0.10 0.390 ±0.004
-1032	-3B	3	(5.0) ±0.10 0.197 ±0.004	(7.4) ±0.10 0.291 ±0.004
22-03-1022	AE-3022-2B	2	(2.5) ±0.10 0.098 ±0.004	(4.9) ±0.10 0.193 ±0.004



RECOMMENDED P.C. BOARD HOLE DIMENSIONS

MAT'L: NYLON 6/6, 94V-0

REDRAWN ON CAD EC NO: E80290 DRWN: P. MOORE 98/01/29 CHK: / / / / / APPR: / / / / /	QUALITY SYMBOLS MAJOR CRITICAL C	GENERAL TOLERANCES: (UNLESS SPECIFIED)		SCALE 4 : 1	DESIGN UNITS <input checked="" type="checkbox"/> mm <input checked="" type="checkbox"/> INCH	THIRD ANGLE PROJECTION DIMENSIONS: <input checked="" type="checkbox"/> mm <input type="checkbox"/> INCH <input type="checkbox"/> mm ONLY SHT REV REVISE ON CAD ONLY	
		4 PLACES ±0.2	±.1	DRAWN BY & DATE P. MOORE 98/01/29	TITLE: WAFER-FLAT KK (2.5)/.098 0.025 SQ. PIN		
		3 PLACES ±0.2	±.008	CHECKED BY & DATE O. COSTEL 98/04/08	MATERIAL NO. / DRAWING NO. SEE CHART SDAE-3022 -NB		
		2 PLACES ±0.2	±.016	APPROVED BY & DATE M. WILHIT 98/04/08	CAD FILENAME SD3022NB.DGN		
1 PLACE ±0.4	±.1	ANGULAR: ± 1/2 °		MATERIAL NO. / DRAWING NO. SEE CHART SDAE-3022 -NB		SHEET NO. 1 OF 1	
DRAFT WHERE APPLICABLE MUST REMAIN WITHIN DIMENSIONS				THIS DRAWING CONTAINS INFORMATION THAT IS PROPRIETARY TO MOLEX INCORPORATED AND SHOULD NOT BE USED WITHOUT WRITTEN PERMISSION.			SIZE B