

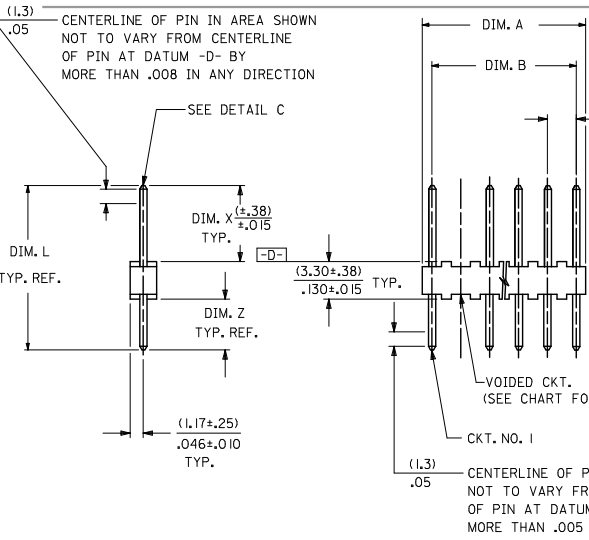
Excellent Integrated System Limited

Stocking Distributor

Click to view price, real time Inventory, Delivery & Lifecycle Information:

[Molex Connector Corporation](#)
[0022042073](#)

For any questions, you can email us directly:
sales@integrated-circuit.com



(2.54 $\pm.05$) .100 $\pm.002$ TYP. BETWEEN ANY TWO CONSECUTIVE CKTS AT DATUM -D-

CKTS. NO. OF	DIM. B	DIM. A
2	(2.54 \pm .05)	(4.83 \pm .20)
	.100 \pm .002	.190 \pm .008
3	(5.08 \pm .15)	(7.37 \pm .20)
	.200 \pm .005	.290 \pm .008
4	(7.62 \pm .15)	(9.91 \pm .20)
	.300 \pm .005	.390 \pm .008
5	(10.16 \pm .15)	(12.45 \pm .20)
	.400 \pm .005	.490 \pm .008
6	(12.70 \pm .15)	(14.99 \pm .23)
	.500 \pm .006	.590 \pm .009
7	(15.24 \pm .15)	(17.53 \pm .23)
	.600 \pm .006	.690 \pm .009
8	(17.78 \pm .15)	(20.07 \pm .23)
	.700 \pm .006	.790 \pm .009
9	(20.32 \pm .18)	(22.61 \pm .25)
	.800 \pm .007	.890 \pm .010
10	(22.86 \pm .18)	(25.15 \pm .25)
	.900 \pm .007	.990 \pm .010
11	(25.40 \pm .18)	(27.69 \pm .25)
	1.000 \pm .007	1.090 \pm .010
12	(27.94 \pm .20)	(30.23 \pm .28)
	1.100 \pm .008	1.190 \pm .011
13	(30.48 \pm .20)	(32.77 \pm .28)
	1.200 \pm .008	1.290 \pm .011
14	(33.02 \pm .20)	(35.31 \pm .28)
	1.300 \pm .008	1.390 \pm .011
15	(35.56 \pm .20)	(37.85 \pm .28)
	1.400 \pm .008	1.490 \pm .011
16	(38.10 \pm .20)	(40.39 \pm .28)
	1.500 \pm .008	1.590 \pm .011

LEGEND

A-4380-N * * * * *

NO. OF CKTS. * * * * *

VOID LOCATION

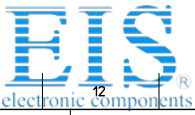
NO VOID = SEE 4030 SERIES DWG. WITH VOIDS = NO. CORRESPONDS TO CKT. NO. VOIDED. MULT. VOIDS = START WITH 51 AND ARE ASSIGNED CONSECUTIVELY.

SECONDARY OPERATIONS	
CODE	PACKAGE
BLANK	BULK
	PER PK-4030-001

- NOTES:
- MATERIAL: NYLON, UL 94V-0, COLOR: WHITE
 - FINISH:
 - (197) OVERALL REFLOWED MATTE TIN: 0.00152/.000060 MIN. OVER 0.00127/.000050 MIN. NICKEL OVERALL.
 - (241) SELECT GOLD: 0.00051/.000020 MIN. SELECT TIN: 0.00254/.000100 MIN. OVERALL NICKEL UNDERPLATE: 0.00127/.000050 MIN.
 - PARTS CONFORM TO PRODUCT SPECIFICATION PS-10-07.
 - PACKAGING: SEE LEGEND
 - PINS MUST CONFORM TO SOLDERABILITY SPEC. SMES-152.
 - PIN PUSH OUT FORCE: 2 LBS. MIN.
 - PARTS ARE STACKABLE END TO END AND SIDE TO SIDE ON (2.54)/.100 CENTERS.
 - THIS PART CONFORMS TO CLASS B REQUIREMENTS OF COSMETIC SPECIFICATION PS-45499-002.

REINSTATE 22112071	QUALITY SYMBOLS
REC NO: UCP2015-3608	▽=0
DRW/KTP/PER 2015/03/04	▽=0
CHK/KONG/VEN 2015/03/04	▽=0
APPRO/SMT/H 2015/03/10	
ZAS	

GENERAL TOLERANCES (UNLESS SPECIFIED)		DIMENSION STYLE		SCALE	DESIGN UNITS	THIRD ANGLE PROJECTION
mm	INCH	MM/IN	DATE	---	INCH	☉
4 PLACES ±---	±---	DRAWN BY	1984/09/07			
3 PLACES ±---	±.010	CHECKED BY	DATE			
2 PLACES ±0.25	±.014	DS	1984/09/07			
1 PLACE ±0.36	±---	APPROVED BY	DATE			
0 PLACE ±	±	KJA	1984/09/07			
ANGULAR ±1/2°		MATERIAL NO.	DOCUMENT NO.	TITLE		
DRAFT WHERE APPLICABLE MUST REMAIN WITHIN DIMENSIONS		SEE CHART	SDA-4380	KK HEADER (2.54)/.100 CENTERS 4030 WITH VOIDS		
		SIZE C		molex		
				SHEET NO. 1 OF 3		



ENG. NO.	PIN NO.	DIM. L	DIM. X	DIM. Z	DIM. G	DIM. T
A-4380-NA197-*	42663-0302	(14.22) .560	(7.49) .295	(3.43) .135	N/A	OVERALL
A-4380-NA241-*	42663-0305	(14.22) .560	(7.49) .295	(3.43) .135	(3.56) .140	(3.43) .135
A-4380-NC197-*	42663-0562	(17.53) .690	(11.13) .438	(3.10) .122	N/A	OVERALL

CHANGE PIN EC NO: UCP2072-1621 DRAWN BY: CHRODRIKER APPROVED BY: APPRENTICE Z A REV	QUALITY SYMBOLS ▽=0 ▽=0 ▽=0	GENERAL TOLERANCES (UNLESS SPECIFIED)		DIMENSION STYLE		SCALE	DESIGN UNITS	THIRD ANGLE PROJECTION	
				MM/IN		---	INCH		
		4 PLACES	±	---	±	---	DRAWN BY: SAMIEC	DATE: 1984/09/07	TITLE KK HEADER (2.54)/.100 CENTERS 4030 WITH VOIDS
		3 PLACES	±	---	±	---	CHECKED BY: DS	DATE: 1984/09/07	
2 PLACES	±	---	±	---	APPROVED BY: KJA		DATE: 1984/09/07	MATERIAL NO. MOLEX INCORPORATED	
1 PLACE	±	---	±	---	ANGULAR ±1/2°				
DRAFT WHERE APPLICABLE MUST REMAIN WITHIN DIMENSIONS		SEE CHART		DOCUMENT NO. SDA-4380		SHEET NO. 2 OF 3			
THIS DRAWING CONTAINS INFORMATION THAT IS PROPRIETARY TO MOLEX INCORPORATED AND SHOULD NOT BE USED WITHOUT WRITTEN PERMISSION									



A-4380-NA197-*		
PART NO.	ENG. NO.	VOID CKT.
22-04-2038	A-4380-3A197-2	2
22-04-2041	A-4380-4A197-2	2
22-04-2161	A-4380-16A197-2	2

A-4380-NA241-*		
PART NO.	ENG. NO.	VOID CKT.
22-11-2031	A-4380-3A241-1	1
22-11-2061	A-4380-6A241-2	2
22-11-2071	A-4380-7A241-2	2
22-11-2081	A-4380-8A241-2	2

A-4380-NC197-*		
PART NO.	ENG. NO.	VOID CKT.
22-04-2063	A-4380-6C197-2	2
22-04-2073	A-4380-7C197-2	2

SEE SHEET 1 REC NO: UCP2015-3608 DRAWN BY: CHKONGQUEN APPROVED BY: ZAS DATE: 2015/03/04 DATE: 2015/03/10	DESCRIPTION REV	QUALITY SYMBOLS	GENERAL TOLERANCES (UNLESS SPECIFIED)	DIMENSION STYLE	SCALE	DESIGN UNITS	THIRD ANGLE PROJECTION																			
		$\nabla = 0$ $\nabla = 0$ $\nabla = 0$	<table border="1"> <thead> <tr> <th></th> <th>mm</th> <th>INCH</th> </tr> </thead> <tbody> <tr> <td>4 PLACES</td> <td>± ---</td> <td>± ---</td> </tr> <tr> <td>3 PLACES</td> <td>± ---</td> <td>± ---</td> </tr> <tr> <td>2 PLACES</td> <td>± ---</td> <td>± ---</td> </tr> <tr> <td>1 PLACE</td> <td>± ---</td> <td>± ---</td> </tr> <tr> <td>0 PLACE</td> <td>±</td> <td>±</td> </tr> </tbody> </table>		mm	INCH	4 PLACES	± ---	± ---	3 PLACES	± ---	± ---	2 PLACES	± ---	± ---	1 PLACE	± ---	± ---	0 PLACE	±	±	IN/MM DRAWN BY: KKS DATE: 1984/09/07 CHECKED BY: DS DATE: 1984/09/07 APPROVED BY: DATE:	---	INCH	KK HEADER (2.54)/.100 CENTERS 4030 WITH VOIDS molex	MATERIAL NO. SEE CHART
			mm	INCH																						
		4 PLACES	± ---	± ---																						
3 PLACES	± ---	± ---																								
2 PLACES	± ---	± ---																								
1 PLACE	± ---	± ---																								
0 PLACE	±	±																								
ANGULAR ±1/2° DRAFT WHERE APPLICABLE MUST REMAIN WITHIN DIMENSIONS	SIZE C THIS DRAWING CONTAINS INFORMATION THAT IS PROPRIETARY TO MOLEX INCORPORATED AND SHOULD NOT BE USED WITHOUT WRITTEN PERMISSION	DOCUMENT NO. SDA-4380	SHEET NO. 3 OF 3																							
THIS DRAWING CONTAINS INFORMATION THAT IS PROPRIETARY TO MOLEX INCORPORATED AND SHOULD NOT BE USED WITHOUT WRITTEN PERMISSION																										