

Excellent Integrated System Limited

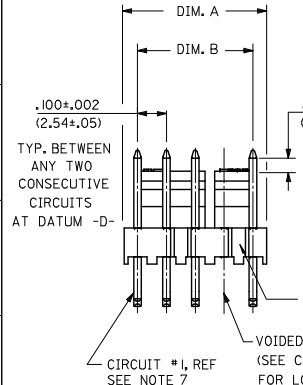
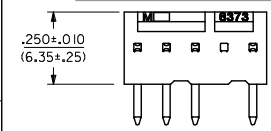
Stocking Distributor

Click to view price, real time Inventory, Delivery & Lifecycle Information:

[Molex Connector Corporation](#)
[0022058105](#)

For any questions, you can email us directly:
sales@integrated-circuit.com

13 12 11 10 9 8 7 6 5 4 3 2 1



VERSION	NO. OF CKTS.	SECONDARY	OPERATIONS
CODE	PACKAGE	TUBE LENGTH	
BLANK	BULK PK-7478-001	N/A	
A	TUBE: PK-44743-001	22.047(560.00)	

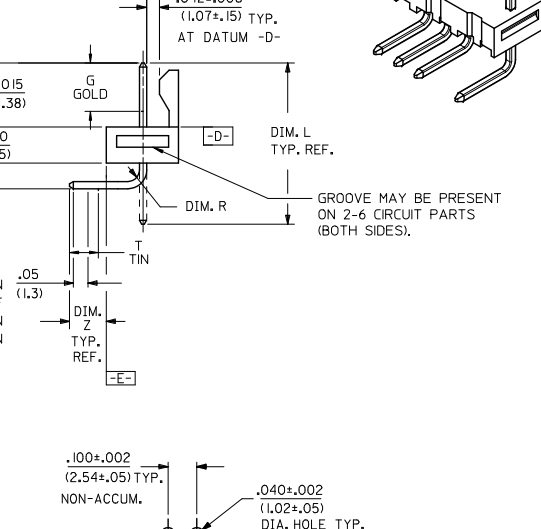
PLATING: SEE NOTE 2.
FOR ADDITIONAL INFORMATION SEE SDES-88.

NOTES:

- MATERIAL: NYLON, UL94V-0. COLOR: WHITE
- FINISH:
 - (197) OVERALL REFLOWED MATTE TIN: 0.00152/0.00060 MIN. OVER 0.00127/0.00050 MIN. NICKEL OVERALL.
 - (228) SELECT GOLD: 0.00076/0.00030 MIN. SELECT TIN: 0.00254/0.00100 MIN. OVERALL NICKEL UNDERPLATE: 0.00127/0.00050 MIN.
 - (241) SELECT GOLD: 0.00051/0.00020 MIN. SELECT TIN: 0.00254/0.00100 MIN. OVERALL NICKEL UNDERPLATE: 0.00127/0.00050 MIN.
- PARTS CONFORM TO PRODUCT SPECIFICATION PS-10-07.
- PACKAGING INFORMATION: SEE LEGEND.
- PARTS ARE STACKABLE END TO END ON .100/(2.54) CENTERS.
- PIN PUSH OUT FORCE: 2 LBS. MIN.
- CIRCUIT ONE DESIGNATION IS USED TO DEFINE VOID LOCATION. CIRCUIT ONE MAY OR MAY NOT LINE UP WITH CIRCUIT ONE ON THE MATING HOUSING.
- PARTS CONFORM TO CLASS 'B' REQUIREMENTS OF COSMETIC SPECIFICATION PS-45499-002.

CENTERLINE OF PIN IN AREA SHOWN NOT TO VARY FROM CENTERLINE OF PIN AT DATUM -D- BY MORE THAN .008/(0.20) IN ANY DIRECTION

CENTERLINE OF PIN IN AREA SHOWN NOT TO VARY FROM CENTERLINE OF PIN AT DATUM -E- BY MORE THAN .005/(0.13) IN ANY DIRECTION



RECOMMENDED P.C. BOARD HOLE LAYOUT

ADD 46999-0651 EC NO: UCP2014-4150 DRAWN BY: MKIPPER CHKD BY: CHKDRNG/TEH APPROVED BY: FSMITH DATE: 2014/04/07 DATE: 2014/08/06	QUALITY SYMBOLS ▽=0 ▽=0 ▽=0	GENERAL TOLERANCES (UNLESS SPECIFIED) mm INCH 4 PLACES ± .010 ± .0004 3 PLACES ± .015 ± .0005 2 PLACES ± 0.25 ± 0.010 1 PLACE ± 0.36 ± .0012 0 PLACE ± .010 ± .0004	DIMENSION STYLE IN/MM	SCALE ---	DESIGN UNITS INCH	THIRD ANGLE PROJECTION	TITLE FRICTION LOCK HEADER ASY .100 CL. BENT SQ. PINS 7832 SERIES DWG. W/VOIDS	MATERIAL NO. SDA-7832	DOCUMENT NO.	SHEET NO. 1 OF 3

DRAFT WHERE APPLICABLE MUST REMAIN WITHIN DIMENSIONS

THIS DRAWING CONTAINS INFORMATION THAT IS PROPRIETARY TO MOLEX INCORPORATED AND SHOULD NOT BE USED WITHOUT WRITTEN PERMISSION

13 12 11 10 9 8 7 6 5 4 3 2 1

13 12 11 10 9 8 7 6 5 4 3 2 1

A-7832-NA197-*			A-7832-NB197-*			A-7832-NA241-*			A-7832-NA228-*		
PART NO.	ENG. NO.(SUFFIX ONLY)	VOID CKT.	PART NO.	ENG. NO.(SUFFIX ONLY)	VOID CKT.	PART NO.	ENG. NO.(SUFFIX ONLY)	VOID CKT.	PART NO.	ENG. NO.(SUFFIX ONLY)	VOID CKT.
22-05-8059	A-7832-5A197-2	2	22-05-8109	A-7832-10B197-6	6	22-19-2070	A-7832-7A241-6	6	22-19-2098	A-7832-9A228-3	3
22-05-8199	A-7832-19A197-14	14	22-05-8078	A-7832-7B197-4	4	22-19-2060	A-7832-6A241-3	3	22-19-2099	A-7832-9A228-4	4
22-05-8069	A-7832-6A197-2	2				22-19-2090	A-7832-9A241-6	6	22-19-2048	A-7832-4A228-3	3
22-05-8076	A-7832-7A197-4	4									
22-05-8077	A-7832-7A197-5	5									
22-05-8068	A-7832-6A197-5	5									
22-05-8047	A-7832-4A197-2	2									
22-05-8079	A-7832-7A197-3	3									
22-05-8116	A-7832-11A197-6	6									
	A-7832-5A197-4	4									
22-05-8253	A-7832-25A197-1	1									
22-05-8129	A-7832-12A197-10	10									
22-05-8159	A-7832-15A197-14	14									
22-05-8128	A-7832-12A197-4	4									
22-05-8049	A-7832-4A197-3	3									
22-05-8086	A-7832-8A197-4	4									
22-05-8113	A-7832-11A197-51	1,5,9									
22-05-8162	A-7832-16A197-51	1,8									
22-05-8087	A-7832-8A197-2	2									
22-05-8088	A-7832-8A197-6	6									
22-05-8089	A-7832-8A197-7	7									
22-05-8104	A-7832-10A197-2	2									
22-05-8105	A-7832-10A197-9	9									
22-05-8084	A-7832-8A197-3	3									
22-05-3277	A-7832-27A197-51	3,7,9,11,14 16,21,23									
22-05-8143	A-7832-14A197-51	2,3,5,6									
46999-0581	A-7832-17A197-51	3,6,12,15									
46999-0651	A-7832-3A197-2	2									

COLUMN NO. 1	CON'T. IN COLUMN NO.	SHEET NO.	COLUMN NO. 2	CON'T. IN COLUMN NO.	SHEET NO.	COLUMN NO. 3	CON'T. IN COLUMN NO.	SHEET NO.	COLUMN NO. 4	CON'T. IN COLUMN NO.	SHEET NO.																																																																		
<table border="1"> <tr> <td rowspan="4" style="writing-mode: vertical-rl; transform: rotate(180deg);"> SEE SHEET 1 IEC NO: UCP2014-4150 DRAWN BY: MKIPPER CHKD BY: CHKONGVIEN APPROVED BY: FSMITH DATE: 2014/04/07 DATE: 2014/04/07 DATE: 2014/08/06 </td> <td rowspan="4" style="writing-mode: vertical-rl; transform: rotate(180deg);"> QUALITY SYMBOLS ∇=0 ∇=0 ∇=0 </td> <td colspan="2">GENERAL TOLERANCES (UNLESS SPECIFIED)</td> <td colspan="2">DIMENSION STYLE</td> <td>SCALE</td> <td>DESIGN UNITS</td> <td>THIRD ANGLE PROJECTION</td> </tr> <tr> <td colspan="2"></td> <td colspan="2">IN/MM</td> <td>---</td> <td>INCH</td> <td></td> </tr> <tr> <td>4 PLACES ±---</td> <td>±---</td> <td>DRAWN BY</td> <td>DATE</td> <td colspan="3">TITLE</td> </tr> <tr> <td>3 PLACES ±---</td> <td>±.010</td> <td>DATE</td> <td>2014/04/07</td> <td colspan="3">FRICTION LOCK HEADER ASY .100 CL. BENT SQ. PINS 7832 SERIES DWG. W/VOIDS</td> </tr> <tr> <td>2 PLACES ±0.25</td> <td>±.015</td> <td>CHECKED BY</td> <td>DATE</td> <td colspan="3" rowspan="2"> </td> </tr> <tr> <td>1 PLACE ±0.36</td> <td>±---</td> <td>DATE</td> <td>98/10/09</td> </tr> <tr> <td>0 PLACE ±---</td> <td>±---</td> <td>APPROVED BY</td> <td>DATE</td> <td colspan="2">MATERIAL NO.</td> <td>DOCUMENT NO.</td> <td>SHEET NO.</td> </tr> <tr> <td></td> <td></td> <td>DATE</td> <td>2014/08/06</td> <td colspan="2">SEE CHART</td> <td>SDA-7832</td> <td>3 OF 3</td> </tr> <tr> <td colspan="4">DRAFT WHERE APPLICABLE MUST REMAIN WITHIN DIMENSIONS</td> <td colspan="4">THIS DRAWING CONTAINS INFORMATION THAT IS PROPRIETARY TO MOLEX INCORPORATED AND SHOULD NOT BE USED WITHOUT WRITTEN PERMISSION</td> <td></td> </tr> </table>												SEE SHEET 1 IEC NO: UCP2014-4150 DRAWN BY: MKIPPER CHKD BY: CHKONGVIEN APPROVED BY: FSMITH DATE: 2014/04/07 DATE: 2014/04/07 DATE: 2014/08/06	QUALITY SYMBOLS ∇=0 ∇=0 ∇=0	GENERAL TOLERANCES (UNLESS SPECIFIED)		DIMENSION STYLE		SCALE	DESIGN UNITS	THIRD ANGLE PROJECTION			IN/MM		---	INCH		4 PLACES ±---	±---	DRAWN BY	DATE	TITLE			3 PLACES ±---	±.010	DATE	2014/04/07	FRICTION LOCK HEADER ASY .100 CL. BENT SQ. PINS 7832 SERIES DWG. W/VOIDS			2 PLACES ±0.25	±.015	CHECKED BY	DATE				1 PLACE ±0.36	±---	DATE	98/10/09	0 PLACE ±---	±---	APPROVED BY	DATE	MATERIAL NO.		DOCUMENT NO.	SHEET NO.			DATE	2014/08/06	SEE CHART		SDA-7832	3 OF 3	DRAFT WHERE APPLICABLE MUST REMAIN WITHIN DIMENSIONS				THIS DRAWING CONTAINS INFORMATION THAT IS PROPRIETARY TO MOLEX INCORPORATED AND SHOULD NOT BE USED WITHOUT WRITTEN PERMISSION				
SEE SHEET 1 IEC NO: UCP2014-4150 DRAWN BY: MKIPPER CHKD BY: CHKONGVIEN APPROVED BY: FSMITH DATE: 2014/04/07 DATE: 2014/04/07 DATE: 2014/08/06	QUALITY SYMBOLS ∇=0 ∇=0 ∇=0	GENERAL TOLERANCES (UNLESS SPECIFIED)		DIMENSION STYLE		SCALE	DESIGN UNITS	THIRD ANGLE PROJECTION																																																																					
				IN/MM		---	INCH																																																																						
		4 PLACES ±---	±---	DRAWN BY	DATE	TITLE																																																																							
		3 PLACES ±---	±.010	DATE	2014/04/07	FRICTION LOCK HEADER ASY .100 CL. BENT SQ. PINS 7832 SERIES DWG. W/VOIDS																																																																							
2 PLACES ±0.25	±.015	CHECKED BY	DATE																																																																										
1 PLACE ±0.36	±---	DATE	98/10/09																																																																										
0 PLACE ±---	±---	APPROVED BY	DATE	MATERIAL NO.		DOCUMENT NO.	SHEET NO.																																																																						
		DATE	2014/08/06	SEE CHART		SDA-7832	3 OF 3																																																																						
DRAFT WHERE APPLICABLE MUST REMAIN WITHIN DIMENSIONS				THIS DRAWING CONTAINS INFORMATION THAT IS PROPRIETARY TO MOLEX INCORPORATED AND SHOULD NOT BE USED WITHOUT WRITTEN PERMISSION																																																																									

ib_frame_C.P.AM.T Rev. G 2012/01/11 12 11 10 9 8 7 6 5 4 3 2 1