

Excellent Integrated System Limited

Stocking Distributor

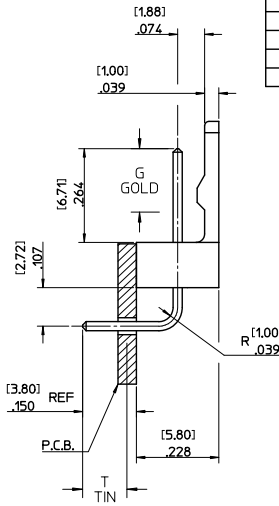
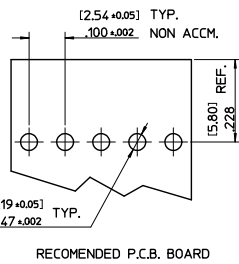
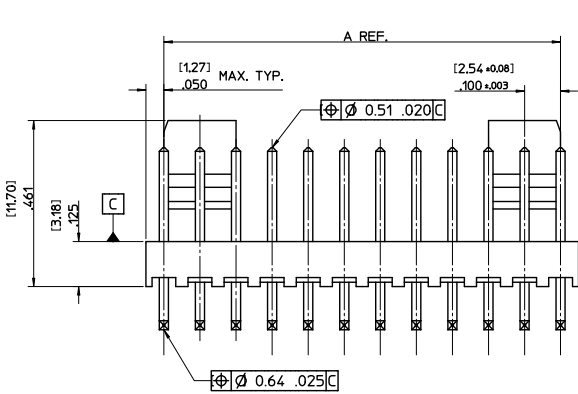
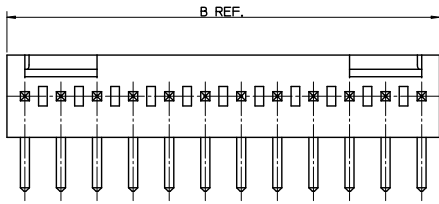
Click to view price, real time Inventory, Delivery & Lifecycle Information:

[Molex Connector Corporation](#)

[0022124022](#)

For any questions, you can email us directly:

sales@integrated-circuit.com



NO. OF CCTS	DIM. A	DIM. B	ENG. NO.	PART NO.	ENG. NO.	PART NO.
2	2.54/100	5.08/200	AE-7395-2B	22-05-7028	AE-7395-2BG	22-12-4022
3	5.08/200	7.62/300	AE-7395-3B	22-05-7038	AE-7395-3BG	22-12-4032
4	7.62/300	10.16/400	AE-7395-4B	22-05-7048	AE-7395-4BG	22-12-4042
5	10.16/400	12.70/500	AE-7395-5B	22-05-7058	AE-7395-5BG	22-12-4052
6	12.70/500	15.24/600	AE-7395-6B	22-05-7068	AE-7395-6BG	22-12-4062
7	15.24/600	17.78/700	AE-7395-7B	22-05-7078	AE-7395-7BG	22-12-4072
8	17.78/700	20.32/800	AE-7395-8B	22-05-7088	AE-7395-8BG	22-12-4082
9	20.32/800	22.86/900	AE-7395-9B	22-05-7098	AE-7395-9BG	22-12-4092
10	22.86/900	25.40/1000	AE-7395-10B	22-05-7108	AE-7395-10BG	22-12-4102
11	25.40/1000	27.94/1100	AE-7395-11B	22-05-7118	AE-7395-11BG	22-12-4112
12	27.94/1100	30.48/1200	AE-7395-12B	22-05-7128	AE-7395-12BG	22-12-4122
13	30.48/1200	33.02/1300	AE-7395-13B	22-05-7138	AE-7395-13BG	22-12-4132
14	33.02/1300	35.56/1400	AE-7395-14B	22-05-7148	AE-7395-14BG	22-12-4142
15	35.56/1400	38.10/1500	AE-7395-15B	22-05-7158	AE-7395-15BG	22-12-4152
16	38.10/1500	40.64/1600	AE-7395-16B	22-05-7168	AE-7395-16BG	22-12-4162

PIN FINISH:		PIN FINISH:	
REFLOWED MATTE TIN: 0.00152/0.00060 MIN OVER 0.00127/0.00050 MIN NICKEL.		SELECT GOLD: 0.00051/0.00020 MIN SELECT MATTE TIN: 0.00254/0.00100 OVER 0.00127/0.00050 MIN NICKEL.	
GOLD LOC G	N/A	GOLD LOC G	4.57/180
TIN LOC T	OVERALL	TIN LOC T	3.43/135

- NOTES:-
- MATERIALS:
WAFER: NYLON 6/6, UL 94, V-0, NATURAL COLOUR
PIN: [0.64]/0.25 BRASS
 - FINISH: SEE CHART
 - PRODUCT SPECIFICATION: PS-99020-0088
 - PACKAGING SPECIFICATION: PK-7478-001
 - WAFERS STACKABLE END TO END
 - PIN SOLDERABILITY PER MOLEX SPECIFICATION SMES-152
 - PIN PUSH OUT FORCE [0.907 KG]/2.0 LBS MIN.
 - PARTS TO BE FLAT WITHIN 0.005 mm/mm OR .005 IN/IN
 - THIS PART CONFORMS TO CLASS B REQUIREMENTS OF COSMETIC SPECIFICATION PS-45499-002.

AE-7395-N B

NO. OF CCTS. _____

PLATING TYPE
BLANK: TIN
G: SELECT GOLD

WAFER ASSY. OPTION _____

CHANGE PLATING EC NO: UCPE2012-1821 DRAWN BY: CHIKAKI CHK/KKIPPER APPROVED BY: APPRO/SHTH	QUALITY SYMBOLS	GENERAL TOLERANCES (UNLESS SPECIFIED)		DIMENSION STYLE		SCALE	DESIGN UNITS	THIRD ANGLE PROJECTION
		mm	INCH	MM/IN	DATE	5:1	METRIC	☉
REV	▽=0	4 PLACES ±	---	DRAWN BY	JDENNEHY	DATE	2005/05/13	WAIVER, R/A FRICTION LOCK (2.54)/.100 CENTERS (0.64)/.025 SQ. PIN
	▽=0	3 PLACES ±	---	CHECKED BY	GMC SWEENEY	DATE	2005/05/27	
	▽=0	2 PLACES ±	0.25	APPROVED BY	JDENNEHY	DATE	2005/05/27	
	▽=0	1 PLACE ±	0.38	ANGULAR ±	2°	MATERIAL NO.	SEE CHART	
DRAFT WHERE APPLICABLE MUST REMAIN WITHIN DIMENSIONS		THIS DRAWING CONTAINS INFORMATION THAT IS PROPRIETARY TO MOLEX INCORPORATED AND SHOULD NOT BE USED WITHOUT WRITTEN PERMISSION		DOCUMENT NO.		SD-7395-001		SHEET NO. 1 OF 1