

## Excellent Integrated System Limited

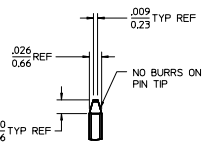
Stocking Distributor

Click to view price, real time Inventory, Delivery & Lifecycle Information:

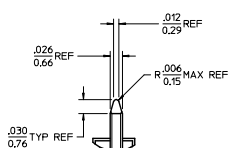
[Molex Connector Corporation](#)  
[0022283357](#)

For any questions, you can email us directly:  
[sales@integrated-circuit.com](mailto:sales@integrated-circuit.com)

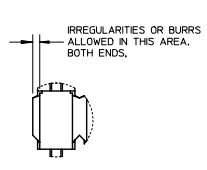
| NO. OF CKTS. | DIM. A      | DIM. B      |
|--------------|-------------|-------------|
| 2            | .400/2.54   | .200/5.08   |
| 3            | .200/5.08   | .300/7.62   |
| 4            | .300/7.62   | .400/10.16  |
| 5            | .400/10.16  | .500/12.70  |
| 6            | .500/12.70  | .600/15.24  |
| 7            | .600/15.24  | .700/17.78  |
| 8            | .700/17.78  | .800/20.32  |
| 9            | .800/20.32  | .900/22.86  |
| 10           | .900/22.86  | 1.000/25.40 |
| 11           | 1.000/25.40 | 1.100/27.94 |
| 12           | 1.100/27.94 | 1.200/30.48 |
| 13           | 1.200/30.48 | 1.300/33.02 |
| 14           | 1.300/33.02 | 1.400/35.56 |
| 15           | 1.400/35.56 | 1.500/38.10 |
| 16           | 1.500/38.10 | 1.600/40.64 |
| 17           | 1.600/40.64 | 1.700/43.18 |
| 18           | 1.700/43.18 | 1.800/45.72 |
| 19           | 1.800/45.72 | 1.900/48.26 |
| 20           | 1.900/48.26 | 2.000/50.80 |
| 21           | 2.000/50.80 | 2.100/53.34 |
| 22           | 2.100/53.34 | 2.200/55.88 |
| 23           | 2.200/55.88 | 2.300/58.42 |
| 24           | 2.300/58.42 | 2.400/60.96 |
| 25           | 2.400/60.96 | 2.500/63.50 |
| 26           | 2.500/63.50 | 2.600/66.04 |
| 27           | 2.600/66.04 | 2.700/68.58 |
| 28           | 2.700/68.58 | 2.800/71.12 |
| 29           | 2.800/71.12 | 2.900/73.66 |
| 30           | 2.900/73.66 | 3.000/76.20 |
| 31           | 3.000/76.20 | 3.100/78.74 |
| 32           | 3.100/78.74 | 3.200/81.28 |
| 33           | 3.200/81.28 | 3.300/83.82 |
| 34           | 3.300/83.82 | 3.400/86.36 |
| 35           | 3.400/86.36 | 3.500/88.90 |
| 36           | 3.500/88.90 | 3.600/91.44 |



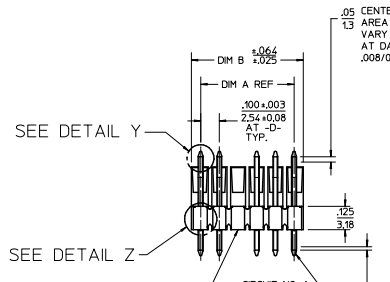
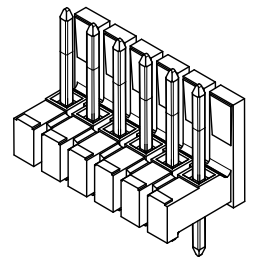
DETAIL X  
SCALE 5:1  
SEE NOTE 10



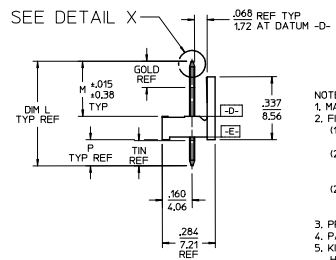
DETAIL Y  
SCALE 5:1  
SEE NOTE 10



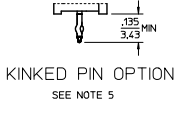
DETAIL Z  
SCALE 5:1



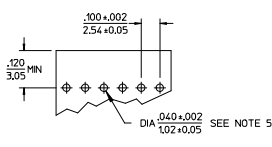
SEE DETAIL Y  
SEE DETAIL Z  
CIRCUIT NO. 1  
OPTIONAL VOIDED CIRCUIT SEE CHART FOR LOCATION  
CENTERLINE OF PIN IN .05 AREA SHOWN NOT TO VARY FROM CENTERLINE OF PIN AT DATUM -E- BY MORE THAN .005/0.13 IN ANY DIRECTION.



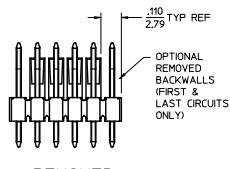
- NOTES:
1. MATERIAL: GLASS FILLED NYLON. 94V-0. COLOR: BLACK
  2. FINISH: (154) OVERALL TIN: .000100/0.00254 MIN. OVER .000050/0.00127 MIN NICKEL. (1208) SELECT GOLD: .000015/0.00038 MIN. SELECT TIN: .000100/0.00254 MIN. OVERALL NICKEL UNDERPLATE: .000050/0.00127 MIN. (1228) SELECT GOLD: .000030/0.00076 MIN. SELECT TIN: .000010/0.00254 MIN. OVERALL NICKEL UNDERPLATE: .000050/0.00127 MIN.
  3. PRODUCT SPECIFICATION PS 10-07.
  4. PACKAGING INFORMATION: SEE TABLES
  5. KINK PIN OPTION NOT RECOMMENDED FOR 2 CIRCUIT PARTS. HOLE SIZE MAY NEED TO BE ADJUSTED ON 2 CIRCUIT PARTS WITH KINK OPTION FOR PROPER INSERTION INTO THE PCB. SEE SPES-42003 FOR ADDITIONAL INFORMATION ON KINK DIRECTION AND PLACEMENT.
  6. HEADERS ARE NOT STACKABLE ON .100/2.54 CENTERS.
  7. SOLDERABILITY PER SPES-162.
  8. PIN PUSH OUT FORCE: 3 LBS. MIN.
  9. PARTS CONFORM TO CLASS 'B' REQUIREMENTS OF COSMETIC SPECIFICATION PS-45499-002.
  10. PIN TIP DIMENSIONS ARE SHOWN FOR REFERENCE ONLY. DIMENSIONS APPLY PRIOR TO PLATING OR ASSEMBLY.
  11. FIRST AND LAST CIRCUIT BACKWALLS MUST BE REMOVED WHEN MATING TO A PART WITH POLARIZING RBS.



KINKED PIN OPTION  
SEE NOTE 5



RECOMMENDED PC BOARD LAYOUT



REMOVED BACKWALL OPTION  
SEE NOTE 11

| ADD NOTE 11         | DESCRIPTION | QUALITY SYMBOLS |
|---------------------|-------------|-----------------|
| EC NO: UCP2014-1471 | 2013/10/01  | ▽=0             |
| DRW:MK/PEER         | 2013/10/01  | ▽=0             |
| CHK:RANDERSON       | 2013/10/01  | ▽=0             |
| APP:RFS/TH          | 2013/10/09  |                 |

| GENERAL TOLERANCES (UNLESS SPECIFIED) | MM    | INCH   |
|---------------------------------------|-------|--------|
| 4 PLACES                              | ± .10 | ± .004 |
| 3 PLACES                              | ± .15 | ± .006 |
| 2 PLACES                              | ± .25 | ± .010 |
| 1 PLACE                               | ± .38 | ± .015 |
| 0 PLACE                               | ± .50 | ± .020 |

| QUALITY SYMBOLS | DESCRIPTION        |
|-----------------|--------------------|
| ▽=0             | NO SURFACE DEFECTS |
| ▽=0             | NO SURFACE DEFECTS |
| ▽=0             | NO SURFACE DEFECTS |

| GENERAL TOLERANCES (UNLESS SPECIFIED) | MM    | INCH   |
|---------------------------------------|-------|--------|
| 4 PLACES                              | ± .10 | ± .004 |
| 3 PLACES                              | ± .15 | ± .006 |
| 2 PLACES                              | ± .25 | ± .010 |
| 1 PLACE                               | ± .38 | ± .015 |
| 0 PLACE                               | ± .50 | ± .020 |

| DRAWN BY    | DATE       | TITLE                                 | SCALE | DESIGN UNITS | THIRD ANGLE PROJECTION |
|-------------|------------|---------------------------------------|-------|--------------|------------------------|
| JSCHAFER    | 2004/03/20 | .100 POLARIZING BREAKAWAY HEADER ASSY | 2:1   | INCH         |                        |
| CHECKED BY  | DATE       |                                       |       |              |                        |
| KSAMIEC     | 2004/03/20 |                                       |       |              |                        |
| APPROVED BY | DATE       |                                       |       |              |                        |
| MARGULIS    | 2004/03/20 |                                       |       |              |                        |



| MATERIAL NO. | DOCUMENT NO. | SHEET NO. |
|--------------|--------------|-----------|
| SEE CHART    | SD-42225-001 | 1 OF *    |