

## Excellent Integrated System Limited

Stocking Distributor

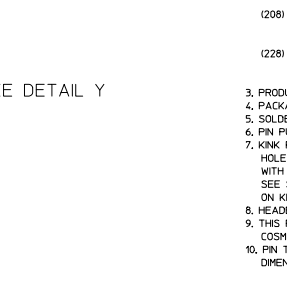
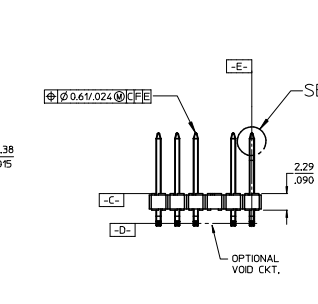
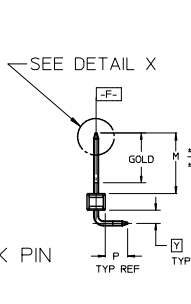
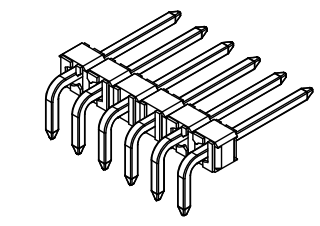
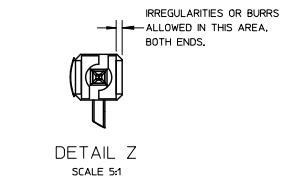
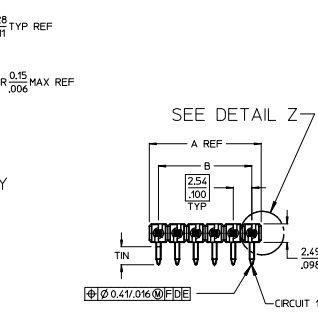
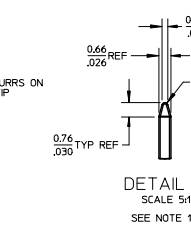
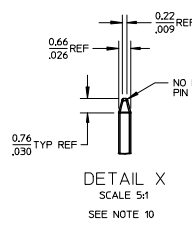
Click to view price, real time Inventory, Delivery & Lifecycle Information:

[Molex Connector Corporation](#)  
[0022289148](#)

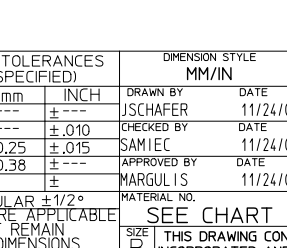
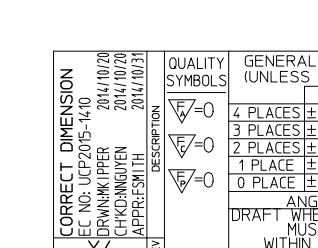
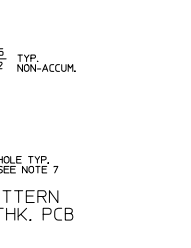
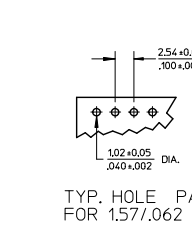
For any questions, you can email us directly:

[sales@integrated-circuit.com](mailto:sales@integrated-circuit.com)

NO. CKTS	DIM. A	DIM. B
2	5.08	2.54
3	7.62	5.08
4	10.16	7.62
5	12.70	10.16
6	15.24	12.70
7	17.78	15.24
8	20.32	17.78
9	22.86	20.32
10	25.40	22.86
11	27.94	25.40
12	30.48	27.94
13	33.02	30.48
14	35.56	33.02
15	38.10	35.56
16	40.64	38.10
17	43.18	40.64
18	45.72	43.18
19	48.26	45.72
20	50.80	48.26
21	53.34	50.80
22	55.88	53.34
23	58.42	55.88
24	60.96	58.42
25	63.50	60.96
26	66.04	63.50
27	68.58	66.04
28	71.12	68.58
29	73.66	71.12
30	76.20	73.66
31	78.74	76.20
32	81.28	78.74
33	83.82	81.28
34	86.36	83.82
35	88.90	86.36
36	91.44	88.90
37	93.98	91.44
38	96.52	93.98
39	99.06	96.52
40	101.60	99.06
41	104.14	101.60
42	106.68	104.14
43	109.22	106.68
44	111.76	109.22
45	114.30	111.76
46	116.84	114.30
47	119.38	116.84
48	121.92	119.38
49	124.46	121.92
50	127.00	124.46
51	129.54	127.00
52	132.08	129.54
53	134.62	132.08
54	137.16	134.62
55	139.70	137.16
56	142.24	139.70
57	144.78	142.24
58	147.32	144.78
59	149.86	147.32
60	152.40	149.86
61	154.94	152.40
62	157.48	154.94
63	160.02	157.48
64	162.56	160.02
65	165.10	162.56
66	167.64	165.10
67	170.18	167.64
68	172.72	170.18
69	175.26	172.72
70	177.80	175.26
71	180.34	177.80
72	182.88	180.34
73	185.42	182.88
74	187.96	185.42
75	190.50	187.96
76	193.04	190.50
77	195.58	193.04
78	198.12	195.58
79	200.66	198.12
80	203.20	200.66
81	205.74	203.20
82	208.28	205.74
83	210.82	208.28
84	213.36	210.82
85	215.90	213.36
86	218.44	215.90
87	220.98	218.44
88	223.52	220.98
89	226.06	223.52
90	228.60	226.06
91	231.14	228.60
92	233.68	231.14
93	236.22	233.68
94	238.76	236.22
95	241.30	238.76
96	243.84	241.30
97	246.38	243.84
98	248.92	246.38
99	251.46	248.92
100	254.00	251.46



- NOTES:
- MATERIAL: GLASS FILLED NYLON  
UL94V-0, COLOR: BLACK
  - FINISH:  
(154) OVERALL TIN: 0.00254/0.00100 MIN. OVER  
NICKEL: 0.00127/0.00050 MIN.  
(208) SELECT GOLD: 0.00038/0.00015 MIN.  
SELECT TIN: 0.00254/0.00100 MIN.  
WITH OVERALL NICKEL UNDERPLATE: 0.00127/0.00050 MIN.  
(228) SELECT GOLD: 0.00076/0.00030 MIN.  
SELECT TIN: 0.00254/0.00100 MIN.  
WITH OVERALL NICKEL UNDERPLATE: 0.00127/0.00050 MIN.
  - PRODUCT SPECIFICATION: PS 10-07
  - PACKAGING INFORMATION: SEE TABLES
  - SOLDERABILITY PER SMES-152.
  - PIN PUSH OUT FORCE: 3 LBS, MIN
  - PIN KINK OPTION NOT RECOMMENDED FOR 2 CIRCUIT PARTS.  
HOLE SIZE MAY NEED TO BE ADJUSTED FOR 2 CIRCUIT PARTS  
WITH KINK OPTION FOR PROPER INSERTION INTO THE PCB.  
SEE SMES-42003 FOR ADDITIONAL INFORMATION  
ON KINK PIN DIRECTION AND PLACEMENT.
  - HEADERS ARE NOT STACKABLE ON 254/100 CENTERS.
  - THIS PART CONFORMS TO CLASS B REQUIREMENTS OF  
COSMETIC SPECIFICATION PS-42499-002.
  - PIN TIP DIMENSIONS ARE SHOWN FOR REFERENCE ONLY.  
DIMENSIONS APPLY PRIOR TO PLATING OR ASSEMBLY.



2**	X4
1	X4
SHEET	REV

CORRECT DIMENSION	QUALITY SYMBOLS	GENERAL TOLERANCES (UNLESS SPECIFIED)		DIMENSION STYLE		SCALE	DESIGN UNITS	THIRD ANGLE PROJECTION	
		mm	INCH	MM/IN	DATE				
4 PLACES	▽=0	± .10	± .005	DRAWN BY	DATE	2:1	INCH	KK 100 HEADER ASSEMBLY FLAT RIGHT ANGLE BREAKAWAY	
3 PLACES	▽=0	± .10	± .010	JSCHAFFER	11/24/03				
2 PLACES	▽=0	± .25	± .015	CHECKED BY	DATE	SEE CHART	DOCUMENT NO.	SD-42377-001	
1 PLACE	▽=0	± .38	± .020	SAMIEC	11/24/03				
0 PLACE	▽=0	± .	± .	APPROVED BY	DATE	THIS DRAWING CONTAINS INFORMATION THAT IS PROPRIETARY TO MOLEX INCORPORATED AND SHOULD NOT BE USED WITHOUT WRITTEN PERMISSION	SHEET NO.	1 OF *	
ANGULAR ±1/2°		DRAFT WHERE APPLICABLE		MARGULIS	11/24/03				
MATERIAL NO.		SEE CHART		MATERIAL NO.		SHEET NO.		1 OF *	