

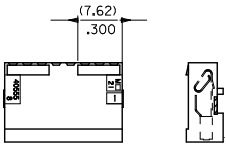
Excellent Integrated System Limited

Stocking Distributor

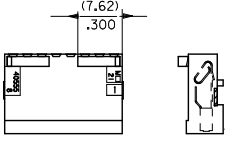
Click to view price, real time Inventory, Delivery & Lifecycle Information:

[Molex Connector Corporation](#)
[0022419032](#)

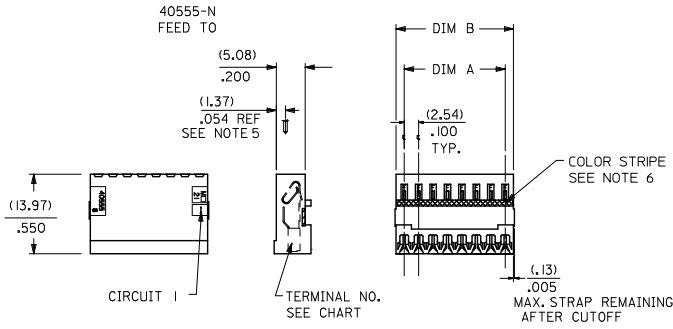
For any questions, you can email us directly:
sales@integrated-circuit.com



40555-AN
FEED TO WITH RAMP



40555-BN
FEED TO WITH RAMP
AND POLARIZING RIBS



NOTES:

- MATERIAL: HOUSING: UNFILLED NYLON UL94V-2, MOLDED NATURAL (WHITE)
TERMINAL: SEE LEGEND
- FINISH:
 - (154) OVERALL TIN: (0.00254)/.000100 MIN. OVER NICKEL: (0.00127)/.000050 MIN.
 - (208) SELECT GOLD: (0.00038)/.000015 MIN.,
SELECT TIN: (0.00254)/.000100 MIN.,
OVERALL NICKEL UNDERPLATE: (0.00127)/.000050 MIN.
 - (228) SELECT GOLD: (0.00076)/.000030 MIN.,
SELECT TIN: (0.00254)/.000100 MIN.,
OVERALL NICKEL UNDERPLATE: (0.00127)/.000050 MIN.
 - (909) OVERALL HOT TIN DIPPED, (0.00254)/.000100 MIN.
- PRODUCT SPECIFICATION: PS-7720-001
- PACKAGING: ALL PARTS ARE TO BE BULK PACKED PER PK-40555-001 UNLESS OTHERWISE SPECIFIED IN CHART.
- FOR USE WITH (0.64)/.025 SQUARE OR ROUND PINS. INSERTION DEPTH OF (6.10/7.87)/.240/.310
- COLOR STRIPE TO RUN LENGTH OF RIB AS SHOWN.
- WIRE TERMINATION SPECIFICATION: SMES-7720-0002
- THIS PART CONFORMS TO CLASS B REQUIREMENTS OF COSMETIC SPECIFICATION PS-45499-002.

NO OF CKTS	DIM A	DIM B
2	(2.54)	(5.44)
3	(5.08)	(7.98)
4	(7.62)	(10.52)
5	(10.16)	(13.06)
6	(12.70)	(15.60)
7	(15.24)	(18.14)
8	(17.78)	(20.68)
9	(20.30)	(23.22)
10	(22.85)	(25.76)
11	(25.40)	(28.30)
12	(27.94)	(30.84)
13	(30.48)	(33.38)
14	(33.02)	(35.92)
15	(35.56)	(38.46)
16	(38.10)	(41.00)
17	(40.64)	(43.54)
18	(43.18)	(46.08)
19	(45.72)	(48.62)
20	(48.26)	(51.16)
21	(50.80)	(53.70)
22	(53.34)	(56.24)
23	(55.88)	(58.78)
24	(58.42)	(61.32)
25	(60.96)	(63.86)
26	(63.50)	(66.40)
27	(66.04)	(68.94)
28	(68.58)	(71.48)

A-40555- * N * *
HOUSING OPTIONS

BLANK=40555-N
A=40555-AN
B=40555-BN

TERMINAL OPTIONS

F = 40554-F(154), BRASS
H = 40627-H(154), BRASS
HA = 40921-H(154), BRASS HUMPBACK (SEE SHEET 2)
HB = 40554-H(154), BRASS
FA = 40554-F(P909), BRASS
HE = 40554-H(P909), BRASS
HF = 41138-H(228), PHOS. BRONZE
A = 7691-A(154), BRASS
HG = 41138-H(208), PHOS. BRONZE
HK = 41138-H(154), PHOS. BRONZE

NO. OF CKTS

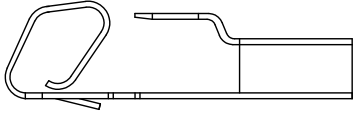
WIRE SPECIFICATIONS (INSULATION DIA. (1.47)/.058 MAX.)

TERMINAL OPTION	COLOR STRIPE	ACCEPTS WIRE:
-A(***)	BROWN	28 AWG. STRANDED TOPCOATED 28 AWG. STRANDED TINNED 28 AWG. SOLID TINNED 26 AWG. STRANDED TINNED 26 AWG. SOLID TINNED
-F(***)	NONE	24 AWG. STRANDED TOPCOATED
-H(***)	GREEN	24 AWG. STRANDED TOPCOATED 24 AWG. STRANDED TINNED 24 AWG. SOLID TINNED 26 AWG. STRANDED TOPCOATED

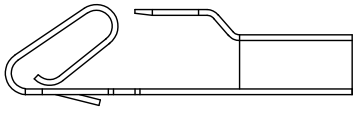
8 BK2	OBSOLETE P/Ns EC NO: UCP2011-1514 2011/01/04 DRAWN: KIPPER CHKD: BELL APPR: SMITH 2011/03/09 DESCRIPTION REV	QUALITY SYMBOLS	GENERAL TOLERANCES (UNLESS SPECIFIED)	DIMENSION STYLE	SCALE	DESIGN UNITS	THIRD ANGLE PROJECTION	
7 BK2		4 PLACES ± .010	MM/IN	---	INCH	INSULATION DISPLACEMENT CONNECTOR ASSEMBLY (2.54)/.100 CENTERS MOLEX INCORPORATED		
6 BK2		3 PLACES ± .010	mm INCH	DRAWN BY R.J.G. DATE 1985/09/16	TITLE			
5 BK2		2 PLACES ± .010	1 PLACE ± .010	CHECKED BY EDGLEY DATE 1985/09/16	APPROVED BY LENZ DATE 1985/09/16	MATERIAL NO. SEE CHART	DOCUMENT NO. SDA-40555-*N*	SHEET NO. 1 OF 8
4 BL		1 PLACE ± .010	ANGULAR ± 1/2°	DRAFT WHERE APPLICABLE MUST REMAIN WITHIN DIMENSIONS	SIZE C	THIS DRAWING CONTAINS INFORMATION THAT IS PROPRIETARY TO MOLEX INCORPORATED AND SHOULD NOT BE USED WITHOUT WRITTEN PERMISSION		
3 BK2		1 BL	1 BL					
2 BL		1 BL						
1 BL		1 BL						

13 12 11 10 9 8 7 6 5 4 3 2 1

ENG. NO.	HOUSING NO.	TERMINAL NO.	COLOR ID	EDP ON SHT./COL.
A-40555-NHB	40555-N	40554-H(154)	GREEN	3 / 1
A-40555-ANHB	40555-AN	40554-H(154)	GREEN	3 / 2
A-40555-BNHB	40555-BN	40554-H(154)	GREEN	3 / 3
				/
				/
				/
A-40555-NHE	40555-N	40554-H(P909)	GREEN	3 / 7
A-40555-ANHE	40555-AN	40554-H(P909)	GREEN	3 / 8
A-40555-BNHE	40555-BN	40554-H(P909)	GREEN	3 / 9
				/
				/
				/
				/
				/



40921 HUMPBACK TERMINAL



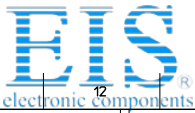
40554, 40627, 41138 AND 7691 TERMINALS

SEE SHEET 1 EC NO: UCP2011-13/4 DRAWN BY: DRINKWIPPER 2011/01/04 CHKD: BELL APPR: SMITH 2011/03/09	QUALITY SYMBOLS ▽=0 ▽=0 ▽=0	GENERAL TOLERANCES (UNLESS SPECIFIED)		DIMENSION STYLE MM/IN		SCALE ---	DESIGN UNITS INCH	THIRD ANGLE PROJECTION
		4 PLACES ± --- ± ---	DRAWN BY SAMIEC	DATE 1991/10/28	TITLE INSULATION DISPLACEMENT CONNECTOR ASSEMBLY .100 CENTERS			
		3 PLACES ± --- ± ---	CHECKED BY EDGLEY	DATE 1991/10/28	MOLEX INCORPORATED			
		2 PLACES ± --- ± --- 1 PLACE ± --- ± --- ANGULAR ± 1/2°	APPROVED BY LENZ	DATE 1991/10/28	MATERIAL NO. SEE CHART	DOCUMENT NO. SDA-40555-*N*	SHEET NO. 2 OF 8	

DRAFT WHERE APPLICABLE MUST REMAIN WITHIN DIMENSIONS

SIZE C THIS DRAWING CONTAINS INFORMATION THAT IS PROPRIETARY TO MOLEX INCORPORATED AND SHOULD NOT BE USED WITHOUT WRITTEN PERMISSION

1b_frame_C_P_ME_T Rev. F 2009/06/18 12 11 10 9 8 7 6 5 4 3 2 1



13 12 11 10 9 8 7 6 5 4 3 2 1

A-40555-NHB		A-40555-ANHB		A-40555-BNHB									
PART NO.	ENG. NO.	PART NO.	ENG. NO.	PART NO.	ENG. NO.	PART NO.	ENG. NO.	PART NO.	ENG. NO.	PART NO.	ENG. NO.	PART NO.	ENG. NO.
A-40555-2HB		DBSOLETE	A-40555-A2HB	22-41-8024	A-40555-B2HB								
A-40555-3HB			A-40555-A3HB	DBSOLETE	A-40555-B3HB								
A-40555-4HB			A-40555-A4HB	DBSOLETE	A-40555-B4HB								
A-40555-5HB			A-40555-A5HB	DBSOLETE	A-40555-B5HB								
A-40555-6HB			A-40555-A6HB	DBSOLETE	A-40555-B6HB								
A-40555-7HB			A-40555-A7HB	22-41-8074	A-40555-B7HB								
A-40555-8HB			A-40555-A8HB	22-41-8084	A-40555-B8HB								
A-40555-9HB			A-40555-A9HB	22-41-8094	A-40555-B9HB								
A-40555-10HB			A-40555-A10HB	DBSOLETE	A-40555-B10HB								
A-40555-11HB			A-40555-A11HB	DBSOLETE	A-40555-B11HB								
A-40555-12HB			A-40555-A12HB	22-41-8124	A-40555-B12HB								
A-40555-13HB			A-40555-A13HB		A-40555-B13HB								
A-40555-14HB			A-40555-A14HB		A-40555-B14HB								
A-40555-15HB			A-40555-A15HB	DBSOLETE	A-40555-B15HB								
A-40555-16HB			A-40555-A16HB	22-41-8164	A-40555-B16HB								
A-40555-17HB			A-40555-A17HB		A-40555-B17HB								
A-40555-18HB			A-40555-A18HB	22-41-8184	A-40555-B18HB								
A-40555-19HB			A-40555-A19HB		A-40555-B19HB								
A-40555-20HB			A-40555-A20HB		A-40555-B20HB								
A-40555-21HB			A-40555-A21HB		A-40555-B21HB								
A-40555-22HB			A-40555-A22HB		A-40555-B22HB								
A-40555-23HB			A-40555-A23HB		A-40555-B23HB								
A-40555-24HB			A-40555-A24HB		A-40555-B24HB								
A-40555-25HB			A-40555-A25HB		A-40555-B25HB								
A-40555-26HB			A-40555-A26HB		A-40555-B26HB								
A-40555-27HB			A-40555-A27HB		A-40555-B27HB								
A-40555-28HB			A-40555-A28HB		A-40555-B28HB								

A-40555-NHE		A-40555-ANHE		A-40555-BNHE	
PART NO.	ENG. NO.	PART NO.	ENG. NO.	PART NO.	ENG. NO.
22-41-9022	A-40555-2HE	DBSOLETE	A-40555-A2HE	22-41-9028	A-40555-B2HE
22-41-9032	A-40555-3HE	22-41-9035	A-40555-A3HE	DBSOLETE	A-40555-B3HE
22-41-9042	A-40555-4HE	22-41-9045	A-40555-A4HE	DBSOLETE	A-40555-B4HE
22-41-9052	A-40555-5HE	22-41-9055	A-40555-A5HE	DBSOLETE	A-40555-B5HE
22-41-9062	A-40555-6HE	22-41-9065	A-40555-A6HE	DBSOLETE	A-40555-B6HE
22-41-9072	A-40555-7HE	22-41-9075	A-40555-A7HE	22-41-9078	A-40555-B7HE
22-41-9082	A-40555-8HE	22-41-9085	A-40555-A8HE	22-41-9088	A-40555-B8HE
22-41-9092	A-40555-9HE	22-41-9095	A-40555-A9HE	22-41-9098	A-40555-B9HE
22-41-9102	A-40555-10HE	22-41-9105	A-40555-A10HE	DBSOLETE	A-40555-B10HE
22-41-9112	A-40555-11HE	22-41-9115	A-40555-A11HE	DBSOLETE	A-40555-B11HE
22-41-9122	A-40555-12HE	22-41-9125	A-40555-A12HE	22-41-9128	A-40555-B12HE
22-41-9132	A-40555-13HE	22-41-9135	A-40555-A13HE	22-41-9138	A-40555-B13HE
22-41-9142	A-40555-14HE	22-41-9145	A-40555-A14HE	22-41-9148	A-40555-B14HE
DBSOLETE	A-40555-15HE	22-41-9155	A-40555-A15HE	DBSOLETE	A-40555-B15HE
22-41-9162	A-40555-16HE	22-41-9165	A-40555-A16HE	22-41-9168	A-40555-B16HE
22-41-9172	A-40555-17HE	22-41-9175	A-40555-A17HE	22-41-9178	A-40555-B17HE
22-41-9182	A-40555-18HE	22-41-9185	A-40555-A18HE	22-41-9188	A-40555-B18HE
22-41-9192	A-40555-19HE	22-41-9195	A-40555-A19HE	22-41-9198	A-40555-B19HE
22-41-9202	A-40555-20HE	22-41-9205	A-40555-A20HE	22-41-9208	A-40555-B20HE
22-41-9212	A-40555-21HE	22-41-9215	A-40555-A21HE	22-41-9218	A-40555-B21HE
22-41-9222	A-40555-22HE	22-41-9225	A-40555-A22HE	22-41-9228	A-40555-B22HE
22-41-9232	A-40555-23HE	22-41-9235	A-40555-A23HE	22-41-9238	A-40555-B23HE
22-41-9242	A-40555-24HE	22-41-9245	A-40555-A24HE	22-41-9248	A-40555-B24HE
22-41-9252	A-40555-25HE	22-41-9255	A-40555-A25HE	22-41-9258	A-40555-B25HE
22-41-9262	A-40555-26HE	22-41-9265	A-40555-A26HE	22-41-9268	A-40555-B26HE
22-41-9272	A-40555-27HE	22-41-9275	A-40555-A27HE	22-41-9278	A-40555-B27HE
22-41-9282	A-40555-28HE	22-41-9285	A-40555-A28HE	22-41-9288	A-40555-B28HE

SEE SHEET 1 EC NO: UCP2010-0587 2009/10/23 DRAWN BY: IRBENES CHKD BY: IPER APPROVED BY: SMITH 2009/11/11 2009/11/11	QUALITY SYMBOLS 	GENERAL TOLERANCES (UNLESS SPECIFIED) mm INCH		DIMENSION STYLE MM/IN		SCALE ---	DESIGN UNITS INCH	THIRD ANGLE PROJECTION
		4 PLACES ± --- ± --- 3 PLACES ± --- ± --- 2 PLACES ± --- ± --- 1 PLACE ± --- ± ---	DRAWN BY SAMIEC	DATE 1991/10/28	TITLE INSULATION DISPLACEMENT CONNECTOR ASSEMBLY .100 CENTERS			
		ANGULAR ±1/2°	CHECKED BY EGGLEY	DATE 1991/10/28	MOLEX INCORPORATED			
		DRAFT WHERE APPLICABLE MUST REMAIN WITHIN DIMENSIONS	APPROVED BY LENZ	DATE 1991/10/28	MATERIAL NO. SEE CHART	DOCUMENT NO. SDA-40555-*N*	SHEET NO. 3 OF 8	

THIS DRAWING CONTAINS INFORMATION THAT IS PROPRIETARY TO MOLEX INCORPORATED AND SHOULD NOT BE USED WITHOUT WRITTEN PERMISSION

13 12 11 10 9 8 7 6 5 4 3 2 1