

Excellent Integrated System Limited

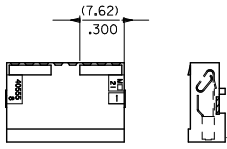
Stocking Distributor

Click to view price, real time Inventory, Delivery & Lifecycle Information:

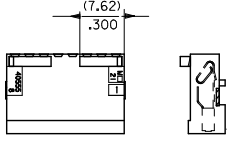
[Molex Connector Corporation](#)
[0022419062](#)

For any questions, you can email us directly:

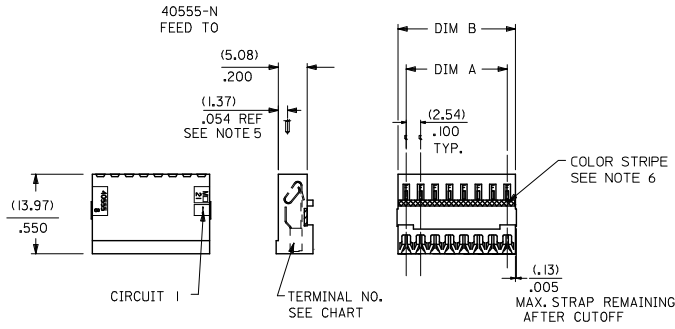
sales@integrated-circuit.com



40555-AN
FEED TO WITH RAMP



40555-BN
FEED TO WITH RAMP
AND POLARIZING RIBS



NOTES:

- MATERIAL: HOUSING: UNFILLED NYLON UL94V-2, MOLDED NATURAL (WHITE)
TERMINAL: SEE LEGEND
- FINISH:
 - (154) OVERALL TIN: (0.00254)/.000100 MIN. OVER NICKEL: (0.00127)/.000050 MIN.
 - (208) SELECT GOLD: (0.000381)/.000015 MIN.,
SELECT TIN: (0.00254)/.000100 MIN.,
OVERALL NICKEL UNDERPLATE: (0.00127)/.000050 MIN.
 - (228) SELECT GOLD: (0.000761)/.000030 MIN.,
SELECT TIN: (0.00254)/.000100 MIN.,
OVERALL NICKEL UNDERPLATE: (0.00127)/.000050 MIN.
 - (909) OVERALL HOT TIN DIPPED, (0.00254)/.000100 MIN.
- PRODUCT SPECIFICATION: PS-7720-001
- PACKAGING: ALL PARTS ARE TO BE BULK PACKED PER PK-40555-001 UNLESS OTHERWISE SPECIFIED IN CHART.
- FOR USE WITH (0.64)/.025 SQUARE OR ROUND PINS, INSERTION DEPTH OF (6.10/7.87)/.240/.310
- COLOR STRIPE TO RUN LENGTH OF RIB AS SHOWN.
- WIRE TERMINATION SPECIFICATION: SMES-7720-0002
- THIS PART CONFORMS TO CLASS B REQUIREMENTS OF COSMETIC SPECIFICATION PS-45499-002.

NO OF CKTS	DIM A	DIM B
2	(2.54)	(5.44)
3	(5.08)	(7.98)
4	(7.62)	(10.52)
5	(10.16)	(13.06)
6	(12.70)	(15.60)
7	(15.24)	(18.14)
8	(17.78)	(20.68)
9	(20.30)	(23.22)
10	(22.85)	(25.76)
11	(25.40)	(28.30)
12	(27.94)	(30.84)
13	(30.48)	(33.38)
14	(33.02)	(35.92)
15	(35.56)	(38.46)
16	(38.10)	(41.00)
17	(40.64)	(43.54)
18	(43.18)	(46.08)
19	(45.72)	(48.62)
20	(48.26)	(51.16)
21	(50.80)	(53.70)
22	(53.34)	(56.24)
23	(55.88)	(58.78)
24	(58.42)	(61.32)
25	(60.96)	(63.86)
26	(63.50)	(66.40)
27	(66.04)	(68.94)
28	(68.58)	(71.48)
	(2.70)	(2.814)

- A-40555- * N * *
HOUSING OPTIONS: BLANK=40555-N, A=40555-AN, B=40555-BN
TERMINAL OPTIONS: F = 40554-F(154), BRASS; H = 40627-H(154), BRASS; HA = 40921-H(154), BRASS HUMPBACK (SEE SHEET 2); HB = 40554-H(154), BRASS; FA = 40554-F(P909), BRASS; HE = 40554-H(P909), BRASS; HF = 41138-H(228), PHOS. BRONZE; A = 7691-A(154), BRASS; HG = 41138-H(208), PHOS. BRONZE; HK = 41138-H(154), PHOS. BRONZE

WIRE SPECIFICATIONS (INSULATION DIA. (1.47)/.058 MAX.)

TERMINAL OPTION	COLOR STRIPE	ACCEPTS WIRE:
-A(***)	BROWN	28 AWG. STRANDED TOPCOATED 28 AWG. STRANDED TINNED 28 AWG. SOLID TINNED 26 AWG. STRANDED TINNED 26 AWG. SOLID TINNED
-F(***)	NONE	24 AWG. STRANDED TOPCOATED
-H(***)	GREEN	24 AWG. STRANDED TOPCOATED 24 AWG. STRANDED TINNED 24 AWG. SOLID TINNED 26 AWG. STRANDED TOPCOATED

8	BK2	REV
7	BK2	REV
6	BK2	REV
5	BK2	REV
4	BL	REV
3	BK2	REV
2	BL	REV
1	BL	REV

QUALITY SYMBOLS

GENERAL TOLERANCES (UNLESS SPECIFIED):
 4 PLACES ± --- ± ---
 3 PLACES ± --- ± ---
 2 PLACES ± --- ± ---
 1 PLACE ± --- ± ---
 ANGULAR ± 1/2°

DIMENSION STYLE: MM/IN
 DRAWN BY: RJG DATE: 1985/09/16
 CHECKED BY: EDGLEY DATE: 1985/09/16
 APPROVED BY: LENZ DATE: 1985/09/16

SCALE: ---
 DESIGN UNITS: INCH
 THIRD ANGLE PROJECTION

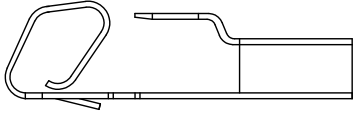
TITLE: INSULATION DISPLACEMENT CONNECTOR ASSEMBLY (2.54)/.100 CENTERS

MATERIAL NO. SEE CHART
 DOCUMENT NO. SDA-40555-*N*
 SHEET NO. 1 OF 8

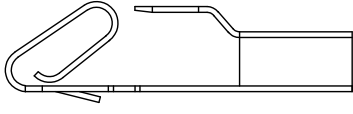
THIS DRAWING CONTAINS INFORMATION THAT IS PROPRIETARY TO MOLEX INCORPORATED AND SHOULD NOT BE USED WITHOUT WRITTEN PERMISSION

13 12 11 10 9 8 7 6 5 4 3 2 1

ENG. NO.	HOUSING NO.	TERMINAL NO.	COLOR ID	EDP ON SHT./COL.
A-40555-NHB	40555-N	40554-H(154)	GREEN	3 / 1
A-40555-ANHB	40555-AN	40554-H(154)	GREEN	3 / 2
A-40555-BNHB	40555-BN	40554-H(154)	GREEN	3 / 3
				/
				/
				/
A-40555-NHE	40555-N	40554-H(P909)	GREEN	3 / 7
A-40555-ANHE	40555-AN	40554-H(P909)	GREEN	3 / 8
A-40555-BNHE	40555-BN	40554-H(P909)	GREEN	3 / 9
				/
				/
				/
				/
				/



40921 HUMPBACK TERMINAL



40554, 40627, 41138 AND 7691 TERMINALS

SEE SHEET 1 EC NO: UCP2011-13/4 DRAWN BY: ZHANGKIPPER 2011/01/04 CHKD: BELL APPR: SMITH 2011/03/09	QUALITY SYMBOLS □=0 □=0 □=0	GENERAL TOLERANCES (UNLESS SPECIFIED)		DIMENSION STYLE		SCALE	DESIGN UNITS	THIRD ANGLE PROJECTION	
				MM/IN		---	INCH		
		4 PLACES	± ---	± ---	DRAWN BY	DATE	TITLE INSULATION DISPLACEMENT CONNECTOR ASSEMBLY .100 CENTERS MOLEX INCORPORATED		
		3 PLACES	± ---	± ---	SAMIEC	1991/10/28			
2 PLACES	± ---	± ---	CHECKED BY	DATE					
1 PLACE	± ---	± ---	EDGLEY	1991/10/28	APPROVED BY	DATE	MATERIAL NO.		
ANGULAR ±1/2°		LENZ		1991/10/28	SDA-40555-*N*		SHEET NO.		
DRAFT WHERE APPLICABLE MUST REMAIN WITHIN DIMENSIONS		SEE CHART		INCORPORATED AND SHOULD NOT BE USED WITHOUT WRITTEN PERMISSION		2 OF 8			

12 11 10 9 8 7 6 5 4 3 2 1

A-40555-NHB		A-40555-ANHB		A-40555-BNHB									
PART NO.	ENG. NO.	PART NO.	ENG. NO.	PART NO.	ENG. NO.	PART NO.	ENG. NO.	PART NO.	ENG. NO.	PART NO.	ENG. NO.	PART NO.	ENG. NO.
	A-40555-2HB	DBSOLETE	A-40555-A2HB	22-41-8024	A-40555-B2HB								
	A-40555-3HB		A-40555-A3HB	DBSOLETE	A-40555-B3HB								
	A-40555-4HB		A-40555-A4HB	DBSOLETE	A-40555-B4HB								
	A-40555-5HB		A-40555-A5HB	DBSOLETE	A-40555-B5HB								
	A-40555-6HB		A-40555-A6HB	DBSOLETE	A-40555-B6HB								
	A-40555-7HB		A-40555-A7HB	22-41-8074	A-40555-B7HB								
	A-40555-8HB		A-40555-A8HB	22-41-8084	A-40555-B8HB								
	A-40555-9HB		A-40555-A9HB	22-41-8094	A-40555-B9HB								
	A-40555-10HB		A-40555-A10HB	DBSOLETE	A-40555-B10HB								
	A-40555-11HB		A-40555-A11HB	DBSOLETE	A-40555-B11HB								
	A-40555-12HB		A-40555-A12HB	22-41-8124	A-40555-B12HB								
	A-40555-13HB		A-40555-A13HB		A-40555-B13HB								
	A-40555-14HB		A-40555-A14HB		A-40555-B14HB								
	A-40555-15HB		A-40555-A15HB	DBSOLETE	A-40555-B15HB								
	A-40555-16HB		A-40555-A16HB	22-41-8164	A-40555-B16HB								
	A-40555-17HB		A-40555-A17HB		A-40555-B17HB								
	A-40555-18HB		A-40555-A18HB	22-41-8184	A-40555-B18HB								
	A-40555-19HB		A-40555-A19HB		A-40555-B19HB								
	A-40555-20HB		A-40555-A20HB		A-40555-B20HB								
	A-40555-21HB		A-40555-A21HB		A-40555-B21HB								
	A-40555-22HB		A-40555-A22HB		A-40555-B22HB								
	A-40555-23HB		A-40555-A23HB		A-40555-B23HB								
	A-40555-24HB		A-40555-A24HB		A-40555-B24HB								
	A-40555-25HB		A-40555-A25HB		A-40555-B25HB								
	A-40555-26HB		A-40555-A26HB		A-40555-B26HB								
	A-40555-27HB		A-40555-A27HB		A-40555-B27HB								
	A-40555-28HB		A-40555-A28HB		A-40555-B28HB								

A-40555-NHE		A-40555-ANHE		A-40555-BNHE	
PART NO.	ENG. NO.	PART NO.	ENG. NO.	PART NO.	ENG. NO.
22-41-9022	A-40555-2HE	DBSOLETE	A-40555-A2HE	22-41-9028	A-40555-B2HE
22-41-9032	A-40555-3HE	22-41-9035	A-40555-A3HE	DBSOLETE	A-40555-B3HE
22-41-9042	A-40555-4HE	22-41-9045	A-40555-A4HE	DBSOLETE	A-40555-B4HE
22-41-9052	A-40555-5HE	22-41-9055	A-40555-A5HE	DBSOLETE	A-40555-B5HE
22-41-9062	A-40555-6HE	22-41-9065	A-40555-A6HE	DBSOLETE	A-40555-B6HE
22-41-9072	A-40555-7HE	22-41-9075	A-40555-A7HE	22-41-9078	A-40555-B7HE
22-41-9082	A-40555-8HE	22-41-9085	A-40555-A8HE	22-41-9088	A-40555-B8HE
22-41-9092	A-40555-9HE	22-41-9095	A-40555-A9HE	22-41-9098	A-40555-B9HE
22-41-9102	A-40555-10HE	22-41-9105	A-40555-A10HE	DBSOLETE	A-40555-B10HE
22-41-9112	A-40555-11HE	22-41-9115	A-40555-A11HE	DBSOLETE	A-40555-B11HE
22-41-9122	A-40555-12HE	22-41-9125	A-40555-A12HE	22-41-9128	A-40555-B12HE
22-41-9132	A-40555-13HE	22-41-9135	A-40555-A13HE	22-41-9138	A-40555-B13HE
22-41-9142	A-40555-14HE	22-41-9145	A-40555-A14HE	22-41-9148	A-40555-B14HE
DBSOLETE	A-40555-15HE	22-41-9155	A-40555-A15HE	DBSOLETE	A-40555-B15HE
22-41-9162	A-40555-16HE	22-41-9165	A-40555-A16HE	22-41-9168	A-40555-B16HE
22-41-9172	A-40555-17HE	22-41-9175	A-40555-A17HE	22-41-9178	A-40555-B17HE
22-41-9182	A-40555-18HE	22-41-9185	A-40555-A18HE	22-41-9188	A-40555-B18HE
22-41-9192	A-40555-19HE	22-41-9195	A-40555-A19HE	22-41-9198	A-40555-B19HE
22-41-9202	A-40555-20HE	22-41-9205	A-40555-A20HE	22-41-9208	A-40555-B20HE
22-41-9212	A-40555-21HE	22-41-9215	A-40555-A21HE	22-41-9218	A-40555-B21HE
22-41-9222	A-40555-22HE	22-41-9225	A-40555-A22HE	22-41-9228	A-40555-B22HE
22-41-9232	A-40555-23HE	22-41-9235	A-40555-A23HE	22-41-9238	A-40555-B23HE
22-41-9242	A-40555-24HE	22-41-9245	A-40555-A24HE	22-41-9248	A-40555-B24HE
22-41-9252	A-40555-25HE	22-41-9255	A-40555-A25HE	22-41-9258	A-40555-B25HE
22-41-9262	A-40555-26HE	22-41-9265	A-40555-A26HE	22-41-9268	A-40555-B26HE
22-41-9272	A-40555-27HE	22-41-9275	A-40555-A27HE	22-41-9278	A-40555-B27HE
22-41-9282	A-40555-28HE	22-41-9285	A-40555-A28HE	22-41-9288	A-40555-B28HE

SEE SHEET 1 EC NO: UCP2010-0587 2009/10/23 DRAWN BY: IRBENES CHKD BY: IPER APPROV: SMITH 2009/11/11 2009/11/11	QUALITY SYMBOLS 	GENERAL TOLERANCES (UNLESS SPECIFIED)		DIMENSION STYLE MM/IN		SCALE ---	DESIGN UNITS INCH	THIRD ANGLE PROJECTION	
		4 PLACES ± --- ± ---	3 PLACES ± --- ± ---	DRAWN BY SAMIEC	DATE 1991/10/28	TITLE INSULATION DISPLACEMENT CONNECTOR ASSEMBLY .100 CENTERS			
		2 PLACES ± --- ± ---	1 PLACE ± --- ± ---	CHECKED BY EGGLEY	DATE 1991/10/28	MOLEX INCORPORATED			
		ANGULAR ±1/2°		APPROVED BY LENZ	DATE 1991/10/28	MATERIAL NO. SDA-40555-*N* DOCUMENT NO.			
DRAFT WHERE APPLICABLE MUST REMAIN WITHIN DIMENSIONS		SEE CHART		THIS DRAWING CONTAINS INFORMATION THAT IS PROPRIETARY TO MOLEX INCORPORATED AND SHOULD NOT BE USED WITHOUT WRITTEN PERMISSION		SHEET NO. 3 OF 8			