

Excellent Integrated System Limited

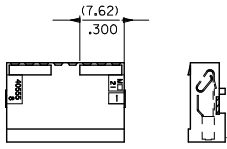
Stocking Distributor

Click to view price, real time Inventory, Delivery & Lifecycle Information:

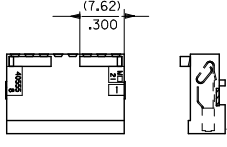
[Molex Connector Corporation](#)
[0022419098](#)

For any questions, you can email us directly:

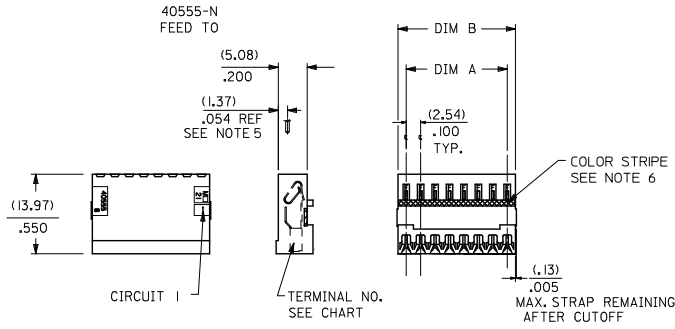
sales@integrated-circuit.com



40555-AN
FEED TO WITH RAMP



40555-BN
FEED TO WITH RAMP
AND POLARIZING RIBS



NOTES:

- MATERIAL: HOUSING: UNFILLED NYLON UL94V-2, MOLDED NATURAL (WHITE)
TERMINAL: SEE LEGEND
- FINISH:
 - (154) OVERALL TIN: (0.00254)/.000100 MIN. OVER NICKEL: (0.00127)/.000050 MIN.
 - (208) SELECT GOLD: (0.000381)/.000015 MIN.,
SELECT TIN: (0.00254)/.000100 MIN.,
OVERALL NICKEL UNDERPLATE: (0.00127)/.000050 MIN.
 - (228) SELECT GOLD: (0.000761)/.000030 MIN.,
SELECT TIN: (0.00254)/.000100 MIN.,
OVERALL NICKEL UNDERPLATE: (0.00127)/.000050 MIN.
 - (909) OVERALL HOT TIN DIPPED, (0.00254)/.000100 MIN.
- PRODUCT SPECIFICATION: PS-7720-001
- PACKAGING: ALL PARTS ARE TO BE BULK PACKED PER PK-40555-001 UNLESS OTHERWISE SPECIFIED IN CHART.
- FOR USE WITH (0.64)/.025 SQUARE OR ROUND PINS, INSERTION DEPTH OF (6.10/7.87)/.240/.310
- COLOR STRIPE TO RUN LENGTH OF RIB AS SHOWN.
- WIRE TERMINATION SPECIFICATION: SMES-7720-0002
- THIS PART CONFORMS TO CLASS B REQUIREMENTS OF COSMETIC SPECIFICATION PS-45499-002.

NO OF CKTS	DIM A	DIM B
2	(2.54)	(5.44)
3	(5.08)	(7.98)
4	(7.62)	(10.52)
5	(10.16)	(13.06)
6	(12.70)	(15.60)
7	(15.24)	(18.14)
8	(17.78)	(20.68)
9	(20.30)	(23.22)
10	(22.85)	(25.76)
11	(25.40)	(28.30)
12	(27.94)	(30.84)
13	(30.48)	(33.38)
14	(33.02)	(35.92)
15	(35.56)	(38.46)
16	(38.10)	(41.00)
17	(40.64)	(43.54)
18	(43.18)	(46.08)
19	(45.72)	(48.62)
20	(48.26)	(51.16)
21	(50.80)	(53.70)
22	(53.34)	(56.24)
23	(55.88)	(58.78)
24	(58.42)	(61.32)
25	(60.96)	(63.86)
26	(63.50)	(66.40)
27	(66.04)	(68.94)
28	(68.58)	(71.48)
	(2.70)	(2.814)

- A-40555- * N * *
HOUSING OPTIONS TERMINAL OPTIONS
- BLANK=40555-N
A=40555-AN
B=40555-BN
- NO. OF CKTS
- F = 40554-F(154), BRASS
H = 40627-H(154), BRASS
HA = 40921-H(154), BRASS HUMPBACK (SEE SHEET 2)
HB = 40554-H(154), BRASS
FA = 40554-F(P909), BRASS
HE = 40554-H(P909), BRASS
HF = 41138-H(228), PHOS. BRONZE
A = 7691-A(154), BRASS
HG = 41138-H(208), PHOS. BRONZE
HK = 41138-H(154), PHOS. BRONZE

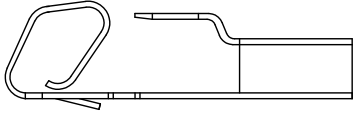
WIRE SPECIFICATIONS (INSULATION DIA. (1.47)/.058 MAX.)

TERMINAL OPTION	COLOR STRIPE	ACCEPTS WIRE:
-A(***)	BROWN	28 AWG. STRANDED TOPCOATED 28 AWG. STRANDED TINNED 28 AWG. SOLID TINNED 26 AWG. STRANDED TINNED 26 AWG. SOLID TINNED
-F(***)	NONE	24 AWG. STRANDED TOPCOATED
-H(***)	GREEN	24 AWG. STRANDED TOPCOATED 24 AWG. STRANDED TINNED 24 AWG. SOLID TINNED 26 AWG. STRANDED TOPCOATED

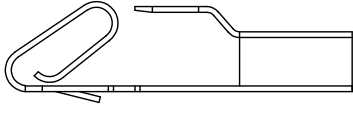
8 BK2	OBSOLETE P/Ns EC NO: UCP2011-1514 2011/01/04 DRAWN: KIPPER CHKD: BELL APPR: SMITH 2011/03/09 DESCRIPTION REV	QUALITY SYMBOLS	GENERAL TOLERANCES (UNLESS SPECIFIED)	DIMENSION STYLE	SCALE	DESIGN UNITS	THIRD ANGLE PROJECTION
7 BK2		4 PLACES ±	MM/IN	---	INCH	INSULATION DISPLACEMENT CONNECTOR ASSEMBLY (2.54)/.100 CENTERS MOLEX INCORPORATED SDA-40555-*N* SHEET NO. 1 OF 8	
6 BK2		3 PLACES ±	DRAWN BY: RJG DATE: 1985/09/16	MATERIAL NO. SEE CHART DOCUMENT NO. SDA-40555-*N*			
5 BK2		2 PLACES ±	CHECKED BY: EDGLEY DATE: 1985/09/16				
4 BL		1 PLACE ±	APPROVED BY: LENZ DATE: 1985/09/16				
3 BK2		ANGULAR ±1/2°					
2 BL		DRAFT WHERE APPLICABLE MUST REMAIN WITHIN DIMENSIONS					
1 BL							
SH. REV.							

13 12 11 10 9 8 7 6 5 4 3 2 1

ENG. NO.	HOUSING NO.	TERMINAL NO.	COLOR ID	EDP ON SHT./COL.
A-40555-NHB	40555-N	40554-H(154)	GREEN	3 / 1
A-40555-ANHB	40555-AN	40554-H(154)	GREEN	3 / 2
A-40555-BNHB	40555-BN	40554-H(154)	GREEN	3 / 3
				/
				/
				/
A-40555-NHE	40555-N	40554-H(P909)	GREEN	3 / 7
A-40555-ANHE	40555-AN	40554-H(P909)	GREEN	3 / 8
A-40555-BNHE	40555-BN	40554-H(P909)	GREEN	3 / 9
				/
				/
				/
				/
				/



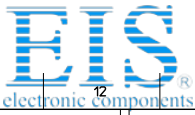
40921 HUMPBACK TERMINAL



40554, 40627, 41138 AND 7691 TERMINALS

SEE SHEET 1 EC NO: UCP2011-13/4 DRAWN BY: DRINKWIPPER 2011/01/04 CHKD: BELL APPR: SMITH 2011/03/09	QUALITY SYMBOLS □=0 □=0 □=0	GENERAL TOLERANCES (UNLESS SPECIFIED)		DIMENSION STYLE		SCALE	DESIGN UNITS	THIRD ANGLE PROJECTION	
				MM/IN		---	INCH		
		4 PLACES	± ---	± ---	DRAWN BY	DATE	TITLE INSULATION DISPLACEMENT CONNECTOR ASSEMBLY .100 CENTERS MOLEX INCORPORATED		
		3 PLACES	± ---	± ---	SAMIEC	1991/10/28			
2 PLACES	± ---	± ---	CHECKED BY	DATE					
1 PLACE	± ---	± ---	EDGLEY	1991/10/28					
ANGULAR ±1/2°		APPROVED BY		DATE					
		LENZ		1991/10/28					
DRAFT WHERE APPLICABLE MUST REMAIN WITHIN DIMENSIONS		MATERIAL NO.		SEE CHART	DOCUMENT NO.	SDA-40555-*N*		SHEET NO. 2 OF 8	
		SIZE		THIS DRAWING CONTAINS INFORMATION THAT IS PROPRIETARY TO MOLEX INCORPORATED AND SHOULD NOT BE USED WITHOUT WRITTEN PERMISSION					

1b_frame_C_P_ME_T Rev. F 2009/06/18 12 11 10 9 8 7 6 5 4 3 2 1



13 12 11 10 9 8 7 6 5 4 3 2 1

Table with columns for Part No. and Eng. No. for series A-40555-NHB, A-40555-ANHB, and A-40555-BNHB. Includes rows for J, I, H, G, F.

Table with columns for Part No. and Eng. No. for series A-40555-NHE, A-40555-ANHE, and A-40555-BNHE. Includes rows for E, D, C, A.

Technical drawing metadata including: SEE SHEET 1, EC NO: UCP2010-0587, DIMENSION STYLE MM/IN, SCALE ---, DESIGN UNITS INCH, THIRD ANGLE PROJECTION, GENERAL TOLERANCES, DIMENSION STYLE, SCALE, DESIGN UNITS, THIRD ANGLE PROJECTION, INSULATION DISPLACEMENT CONNECTOR ASSEMBLY .100 CENTERS, MOLEX INCORPORATED, SDA-40555-*N*, SHEET NO. 3 OF 8.

1b, frame, C, P, ME, T Rev. F 2009/06/18 12 11 10 9 8 7 6 5 4 3 2 1