

## Excellent Integrated System Limited

Stocking Distributor

Click to view price, real time Inventory, Delivery & Lifecycle Information:

[Molex Connector Corporation](#)  
[0022464042](#)

For any questions, you can email us directly:

[sales@integrated-circuit.com](mailto:sales@integrated-circuit.com)

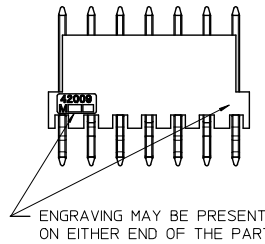
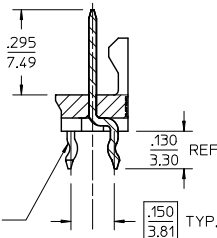
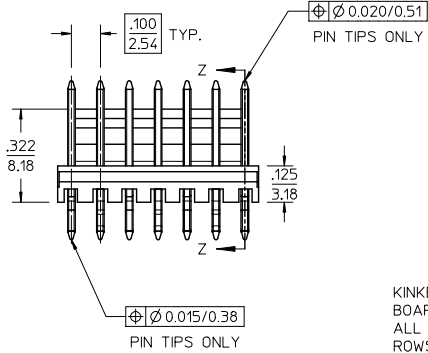
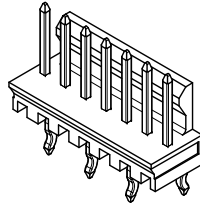
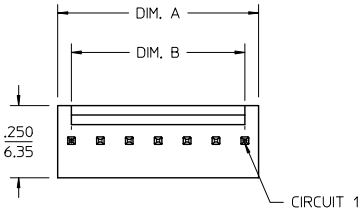
NOTES

- MATERIAL: WAFER - GLASS FILLED POLYESTER, UL94 V-0, COLOR: NATURAL (WHITE)  
PIN - BRASS
- FINISH: OVERALL REFLOWED MATTE TIN: .000060/0.00152 MIN. OVER .000050/0.00127 MIN. NICKEL
- PRODUCT SPECIFICATION: PS-10-07
- BULK PACK PER PK-43009-001
- THIS PART CONFORMS TO CLASS B REQUIREMENTS OF COSMETIC SPECIFICATION PS-45499-002.
- ENGRAVING LOCATION IS DETERMINED BY TOOLING AND WILL BE PRESENT AT EITHER LOCATION SHOWN.

ENG. NO. DESIGNATION:

A-42009- N - \*\*  
CKT. SIZE

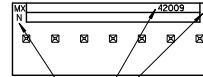
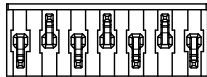
VOID PIN DESIGNATION  
A= #1 PIN  
B= #2 PIN  
C= #3 PIN  
ECT.



KINKED PINS FOR P.C. BOARD RETENTION- ALL PINS KINKED, TWO ROWS OPPOSING EACH OTHER

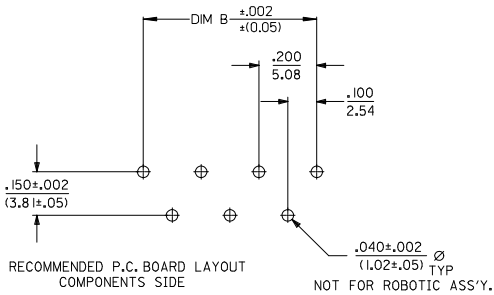
ENGRAVING MAY BE PRESENT ON EITHER END OF THE PART

SECTION Z-Z



ALTERNATE ENGRAVING LOCATION  
SEE NOTE 6

10	.995/(25.27)	.900/(22.86)
9	.895/(22.73)	.800/(20.32)
8	.795/(20.19)	.700/(17.78)
7	.695/(17.65)	.600/(15.24)
6	.595/(15.11)	.500/(12.70)
5	.495/(12.57)	.400/(10.16)
4	.395/(10.03)	.300/(7.62)
3	.295/(7.49)	.200/(5.08)
2	.195/(4.95)	.100/(2.54)
CKT. SIZE	DIM A	DIM B



<b>REDRAWN ENGRAVING</b> EC NO: UCPE2015-3460 DRAWN BY: 2013/04/11 CHKD BY: 2013/04/11 APPROVED BY: 2014/01/13	QUALITY SYMBOLS ∇=0 ∇=0 ∇=0	GENERAL TOLERANCES (UNLESS SPECIFIED) mm INCH	DIMENSION STYLE IN/MM	SCALE 4:1	DESIGN UNITS INCH	THIRD ANGLE PROJECTION
		4 PLACES ± --- ± --- 3 PLACES ± --- ± .010 2 PLACES ± 0.25 ± .014 1 PLACE ± 0.36 ± --- 0 PLACE ± --- ± ---	DRAWN BY: EDGLEY DATE: 1986/11/29 CHECKED BY: EDGLEY DATE: 1986/11/29 APPROVED BY: F SMITH DATE: 2014/01/13	MATERIAL NO. SEE CHART	DOCUMENT NO. SDA-42009-*	SHEET NO. 1 OF 2

A-42009-N

PART NO.	ENG. NO	VOID CKT.
22-23-3024	A-42009-2	NONE
22-23-3034	A-42009-3	NONE
22-23-3044	A-42009-4	NONE
22-23-3054	A-42009-5	NONE
22-23-3064	A-42009-6	NONE
22-23-3074	A-42009-7	NONE
22-23-3084	A-42009-8	NONE
22-23-3094	A-42009-9	NONE
22-23-3104	A-42009-10	NONE
22-46-4041	A-42009-4-B	2
22-46-4042	A-42009-4-C	3
22-46-4052	A-42009-5-B	2
22-46-4053	A-42009-5-C	3
22-46-4050	A-42009-5-D	4
22-46-4051	A-42009-5-E	5
22-46-4064	A-42009-6-B	2
	A-42009-6-BC	2,3
22-46-4068	A-42009-6-D	4
22-46-4065	A-42009-6-E	5
22-46-4069	A-42009-6-F	6
22-46-4072	A-42009-7-E	5
22-46-4080	A-42009-8-D	4
22-46-4081	A-42009-8-E	5
22-46-4031	A-42009-3-C	3
22-46-4063	A-42009-6-DE	4,5
22-46-4062	A-42009-6-CF	3,6
22-46-4061	A-42009-6-BD	2,4
22-46-4030	A-42009-3-B	2
22-46-4066	A-42009-6-C	3
22-46-4071	A-42009-7-D	4
22-46-4067	A-42009-6-CE	3,5
22-46-4074	A-42009-7-C	3
22-46-4075	A-42009-7-F	6
22-46-4073	A-42009-7-B	2
22-46-4082	A-42009-8-H	8
22-46-4083	A-42009-8-F	6
22-46-4101	A-42009-10-I	9
22-46-4100	A-42009-10-B	2
22-46-4043	A-42009-4-D	4
22-46-4060	A-42009-6-BE	2,5

ENG. NO. DESIGNATION:  
 A-42009- N - \*\*  
 CKT. SIZE                VOID PIN DESIGNATION  
 A = #1 PIN  
 B = #2 PIN  
 C = #3 PIN  
 ECT.

COLUMN NO. I	CON'T. IN COLUMN NO.	SHEET NO.
--------------	----------------------	-----------

<b>REDRAWN</b> EC NO: UCP2013-3460 DRAWN BY: 2013/04/11 CHK'D BY: CHOKRANEKSON 2013/04/11 APPROVED BY: APRIL SMITH 2014/01/13 DESCRIPTION:	QUALITY SYMBOLS	GENERAL TOLERANCES (UNLESS SPECIFIED)	DIMENSION STYLE	SCALE	DESIGN UNITS	THIRD ANGLE PROJECTION
	▽=0	mm INCH	IN/MM	---	INCH	☉
	▽=0	4 PLACES ± --- ± ---	DRAWN BY DATE	EDGLEY 1986/11/29	TITLE	WAFER, FRICTION LOCK ASSEMBLY
	▽=0	3 PLACES ± --- ± .010	CHECKED BY DATE	EDGLEY 1986/11/29		
	2 PLACES ± 0.25 ± .014	APPROVED BY DATE	FSMITH 2014/01/13	MATERIAL NO.	DOCUMENT NO.	SHEET NO.
	1 PLACE ± 0.36 ± ---	ANGULAR ±1/2°		SEE CHART	SDA-42009-*	2 OF 2
	0 PLACE ± --- ± ---	DRAFT WHERE APPLICABLE MUST REMAIN WITHIN DIMENSIONS		THIS DRAWING CONTAINS INFORMATION THAT IS PROPRIETARY TO MOLEX INCORPORATED AND SHOULD NOT BE USED WITHOUT WRITTEN PERMISSION		