

Excellent Integrated System Limited

Stocking Distributor

Click to view price, real time Inventory, Delivery & Lifecycle Information:

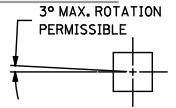
[Molex Connector Corporation](#)
[0025023060](#)

For any questions, you can email us directly:

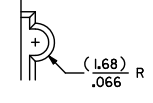
sales@integrated-circuit.com

CKT. SIZE	PART NUMBER	ENG. NUMBER	DIM. "A"		DIM. "B"		DIM. "C"	
			MM	IN.	MM	IN.	MM	IN.
08	25-02-3008	0771	7,62	.300	17,78	.700	20,32	.800
10	25-02-3010	0772	10,16	.400	20,32	.800	22,86	.900
12	25-02-3012	0773	12,70	.500	22,86	.900	25,40	1,000
14	25-02-3014	0774	15,24	.600	25,40	1,000	27,94	1,100
16	25-02-3016	0775	17,78	.700	27,94	1,100	30,48	1,200
18	25-02-3018	0776	20,32	.800	30,48	1,200	33,02	1,300
20	25-02-3020	0777	22,86	.900	33,02	1,300	35,56	1,400
22	25-02-3022	0778	25,40	1,000	35,56	1,400	38,10	1,500
24	25-02-3024	0779	27,94	1,100	38,10	1,500	40,64	1,600
26	25-02-3026	0780	30,48	1,200	40,64	1,600	43,10	1,700
28	25-02-3028	0781	33,02	1,300	43,10	1,700	45,72	1,800
30	25-02-3030	0782	35,56	1,400	45,72	1,800	48,26	1,900
32	25-02-3032	0783	38,10	1,500	48,26	1,900	50,80	2,000
34	25-02-3034	0784	40,64	1,600	50,80	2,000	53,34	2,100
36	25-02-3036	0785	43,10	1,700	53,34	2,100	55,88	2,200
38	25-02-3038	0786	45,72	1,800	55,88	2,200	58,42	2,300
40	25-02-3040	0787	48,26	1,900	58,42	2,300	60,96	2,400

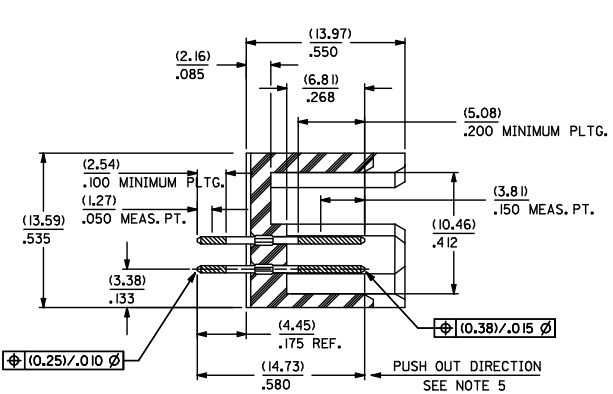
CKT. SIZE	PART NUMBER	ENG. NUMBER	DIM. "A"		DIM. "B"		DIM. "C"	
			MM	IN.	MM	IN.	MM	IN.
42	25-02-3042	0788	50,80	2,000	60,96	2,400	63,50	2,500
44	25-02-3044	0789	53,34	2,100	63,50	2,500	66,04	2,600
46	25-02-3046	0790	55,88	2,200	66,04	2,600	68,58	2,700
48	25-02-3048	0791	58,42	2,300	68,58	2,700	71,12	2,800
50	25-02-3050	0792	60,96	2,400	71,12	2,800	73,66	2,900
52	25-02-3052	0793	63,50	2,500	73,66	2,900	76,20	3,000
54	25-02-3054	0794	66,04	2,600	76,20	3,000	78,74	3,100
56	25-02-3056	0795	68,58	2,700	78,74	3,100	81,28	3,200
58	25-02-3058	0796	71,12	2,800	81,28	3,200	83,82	3,300
60	25-02-3060	0797	73,66	2,900	83,82	3,300	86,36	3,400
62	25-02-3062	0798	76,20	3,000	86,36	3,400	88,90	3,500
64	25-02-3064	0799	78,74	3,100	88,90	3,500	91,44	3,600
66	25-02-3066	0800	81,28	3,200	91,44	3,600	93,98	3,700
68	25-02-3068	0801	83,82	3,300	93,98	3,700	96,52	3,800
70	25-02-3070	0802	86,36	3,400	96,52	3,800	99,06	3,900
72	25-02-3072	0803	88,90	3,500	99,06	3,900	101,60	4,000



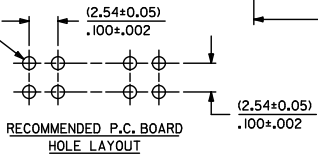
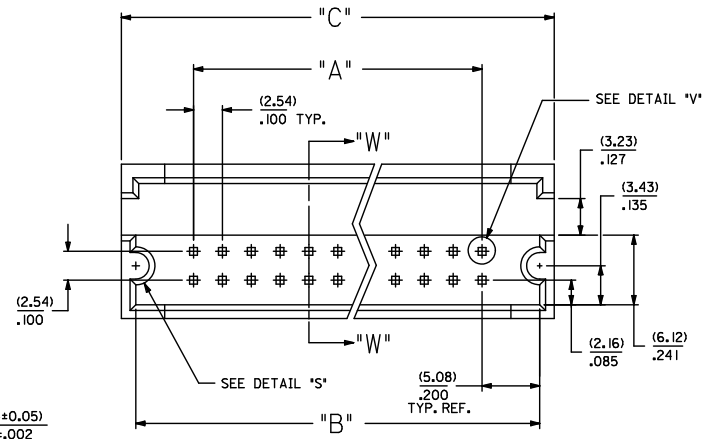
DETAIL "V"
SCALE = 20x1



DETAIL "S"



SECTION W-W



RECOMMENDED P.C. BOARD HOLE LAYOUT

- NOTES:
1. WAFER MATERIAL: GLASS FILLED NYLON, COLOR: BLACK
 2. PIN MATERIAL: COPPER ALLOY
 3. PIN PLATING:
TIP: 15 MICROINCHES MINIMUM GOLD IN SELECTED AREA
TAIL: 75 MICROINCHES MINIMUM TIN IN SELECTED AREA
OVER NICKEL UNDERPLATE OVER-ALL
 4. PINS MUST MEET SOLDERABILITY SPEC. NO. 152
 5. PIN PUSH-OUT FORCE (1.81 KG/4 LBS MINIMUM
 6. REFER TO P.S. NO. 70204
 7. STANDARD PACKAGING PER: PK-70873-0070

CORRECT DIMENSION EC NO: UCP2011-5892 DRAWING: BARRA 2011/06/27 CHK: BUNGAN APPROX: MILLER 2011/07/07	QUALITY SYMBOLS ▽=0 ▽=0 ▽=0	GENERAL TOLERANCES (UNLESS SPECIFIED)		DIMENSION STYLE		SCALE	DESIGN UNITS	THIRD ANGLE PROJECTION
		mm	INCH	MM/IN		4:1	INCH	☉
		4 PLACES ± ---	± ---	DRAWN BY	DATE	TITLE		
3 PLACES ± ---	± .010	JAS	1986/05/20	SHROUDED HEADER DUAL ROW W/PCB SLOTS & GUIDE EARS .100 GRID, .025 SQ PIN				
2 PLACES ± 0.25	± ---	CHK BY	DATE	Molex MOLEX INCORPORATED				
1 PLACE ± ---	± ---	EIK	1986/05/20	MATERIAL NO. DOCUMENT NO. SHEET NO.				
ANGULAR ± 1/2°		APPROVED BY	DATE	SDA-70204-0769-0832 1 OF 1				
DRAFT WHERE APPLICABLE MUST REMAIN WITHIN DIMENSIONS		WAZ	1986/05/20	THIS DRAWING CONTAINS INFORMATION THAT IS PROPRIETARY TO MOLEX INCORPORATED AND SHOULD NOT BE USED WITHOUT WRITTEN PERMISSION				