

Excellent Integrated System Limited

Stocking Distributor

Click to view price, real time Inventory, Delivery & Lifecycle Information:

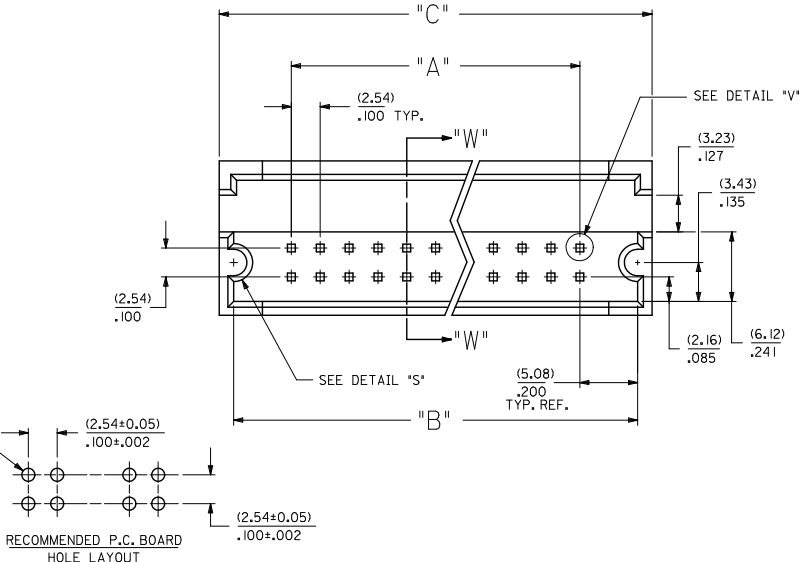
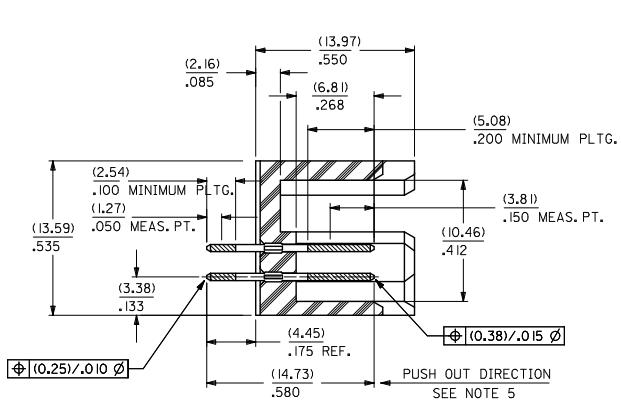
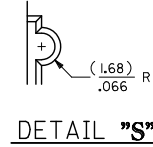
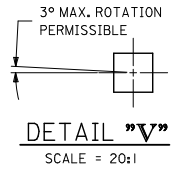
[Molex Connector Corporation](#)
[0025025056](#)

For any questions, you can email us directly:

sales@integrated-circuit.com

CKT. SIZE	PART NUMBER	ENG. NUMBER	DIM. "A"		DIM. "B"		DIM. "C"	
			MM	IN.	MM	IN.	MM	IN.
08	25-02-5008	0899	7,62	.300	17,78	.700	20,32	.800
10	25-02-5010	0900	10,16	.400	20,32	.800	22,86	.900
12	25-02-5012	0901	12,70	.500	22,86	.900	25,40	1,000
14	25-02-5014	0902	15,24	.600	25,40	1,000	27,94	1,100
16	25-02-5016	0903	17,78	.700	27,94	1,100	30,48	1,200
18	25-02-5018	0904	20,32	.800	30,48	1,200	33,02	1,300
20	25-02-5020	0905	22,86	.900	33,02	1,300	35,56	1,400
22	25-02-5022	0906	25,40	1,000	35,56	1,400	38,10	1,500
24	25-02-5024	0907	27,94	1,100	38,10	1,500	40,64	1,600
26	25-02-5026	0908	30,48	1,200	40,64	1,600	43,10	1,700
28	25-02-5028	0909	33,02	1,300	43,10	1,700	45,72	1,800
30	25-02-5030	0910	35,56	1,400	45,72	1,800	48,26	1,900
32	25-02-5032	0911	38,10	1,500	48,26	1,900	50,80	2,000
34	25-02-5034	0912	40,64	1,600	50,80	2,000	53,34	2,100
36	25-02-5036	0913	43,10	1,700	53,34	2,100	55,88	2,200
38	25-02-5038	0914	45,72	1,800	55,88	2,200	58,42	2,300
40	25-02-5040	0915	48,26	1,900	58,42	2,300	60,96	2,400

CKT. SIZE	PART NUMBER	ENG. NUMBER	DIM. "A"		DIM. "B"		DIM. "C"	
			MM	IN.	MM	IN.	MM	IN.
42	25-02-5042	0916	50,80	2,000	60,96	2,400	63,50	2,500
44	25-02-5044	0917	53,34	2,100	63,50	2,500	66,04	2,600
46	25-02-5046	0918	55,88	2,200	66,04	2,600	68,58	2,700
48	25-02-5048	0919	58,42	2,300	68,58	2,700	71,12	2,800
50	25-02-5050	0920	60,96	2,400	71,12	2,800	73,66	2,900
52	25-02-5052	0921	63,50	2,500	73,66	2,900	76,20	3,000
54	25-02-5054	0922	66,04	2,600	76,20	3,000	78,74	3,100
56	25-02-5056	0923	68,58	2,700	78,74	3,100	81,28	3,200
58	25-02-5058	0924	71,12	2,800	81,28	3,200	83,82	3,300
60	25-02-5060	0925	73,66	2,900	83,82	3,300	86,36	3,400
62	25-02-5062	0926	76,20	3,000	86,36	3,400	88,90	3,500
64	25-02-5064	0927	78,74	3,100	88,90	3,500	91,44	3,600
66	25-02-5066	0928	81,28	3,200	91,44	3,600	93,98	3,700
68	25-02-5068	0929	83,82	3,300	93,98	3,700	96,52	3,800
70	25-02-5070	0930	86,36	3,400	96,52	3,800	99,06	3,900
72	25-02-5072	0931	88,90	3,500	99,06	3,900	101,60	4,000



- NOTES:
1. WAFER MATERIAL: GLASS FILLED NYLON, COLOR: BLACK
 2. PIN MATERIAL: COPPER ALLOY
 3. PIN PLATING:
OVERALL: 150 MICRONS MINIMUM TIN
OVER NICKEL UNDERPLATE
 4. PINS MUST MEET SOLDERABILITY SPEC. NO. 152
 5. PIN PUSH-OUT FORCE (1.81 KG)/4 LBS MINIMUM
 6. REFER TO P.S. NO. 70204
 7. STANDARD PACKAGING PER: PK-70873-0070

CORRECT DIMENSION EC NO: UCP2011-3892 DRAWN BY: CHAKRABARTI 2011/06/27 APPROVED BY: S.MILLER 2011/07/07	QUALITY SYMBOLS	GENERAL TOLERANCES (UNLESS SPECIFIED)	DIMENSION STYLE	SCALE	DESIGN UNITS	THIRD ANGLE PROJECTION
	▽=0	4 PLACES ± --- ± ---	MM/IN	4:1	INCH	☉
	▽=0	3 PLACES ± --- ± .010				
	▽=0	2 PLACES ± 0.25 ± ---				
		1 PLACE ± --- ± ---				
		ANGULAR ±1/2°				
		DRAFT WHERE APPLICABLE MUST REMAIN WITHIN DIMENSIONS	SEE TABLE			

TITLE: SHROUDED HEADER DUAL ROW W/PCB SLOTS & GUIDE EARS .100 GRID, .025 SQ PIN

MATERIAL NO. SDA-70204-0897-0960

MOLEX INCORPORATED

DOCUMENT NO. SDA-70204-0897-0960

SHEET NO. 1 OF 1