

Excellent Integrated System Limited

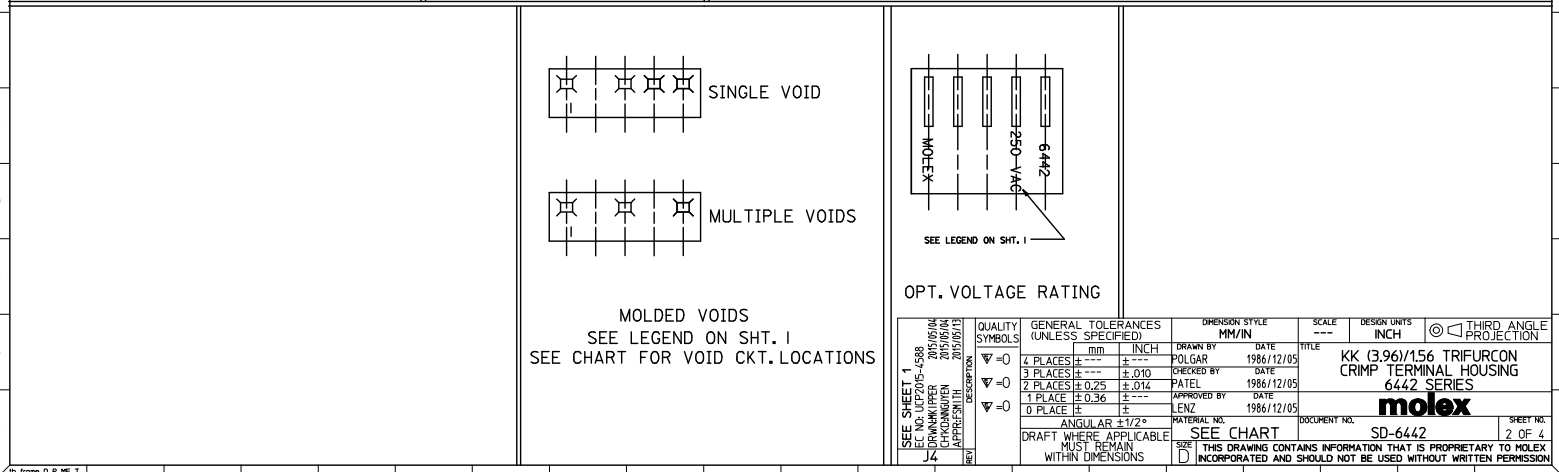
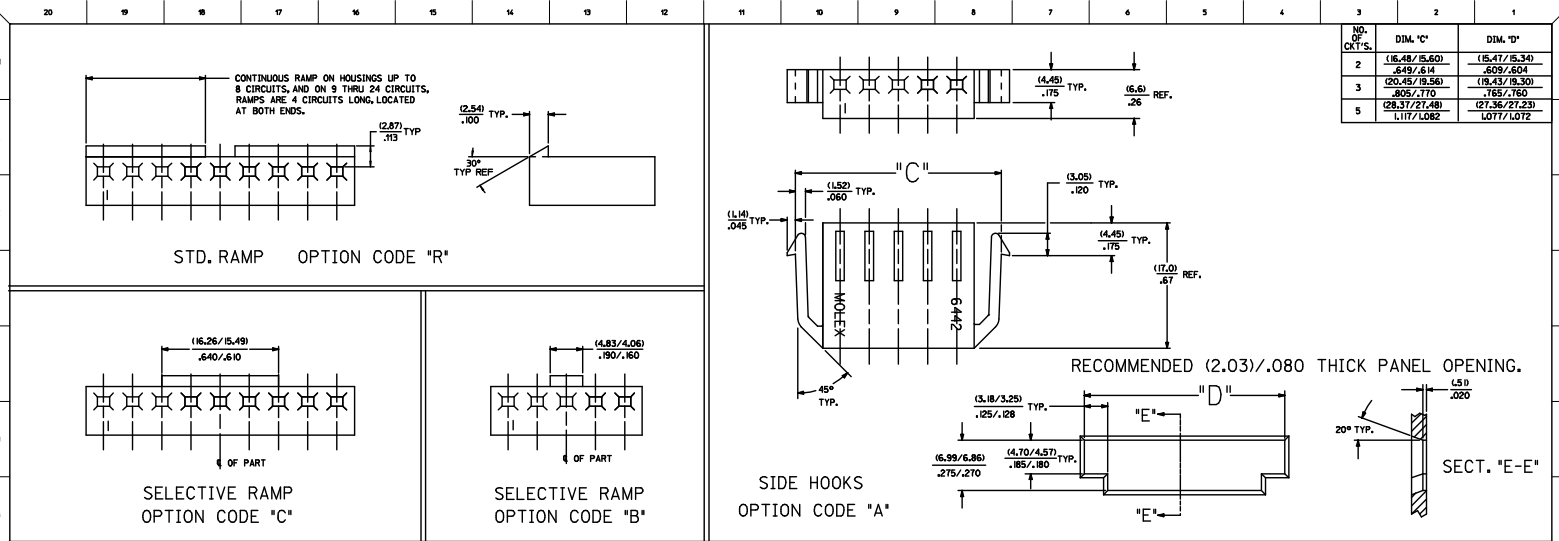
Stocking Distributor

Click to view price, real time Inventory, Delivery & Lifecycle Information:

[Molex Connector Corporation](#)
[0026033141](#)

For any questions, you can email us directly:

sales@integrated-circuit.com



6442-N**			6442-RN**			6442-RN**			6442-RND**			6442-BN**			6442-CN**			
PART NO.	ENG. NO.	VOIDS	PART NO.	ENG. NO.	VOIDS	PART NO.	ENG. NO.	VOIDS	PART NO.	ENG. NO.	VOIDS	PART NO.	ENG. NO.	VOIDS	PART NO.	ENG. NO.	VOIDS	
26-03-3011	6442-1-Z		26-03-4011	6442-R1-Z					26-03-7021	6442-R1D-Z								
26-03-3021	6442-2-Z		26-03-4020	6442-R2-Z					26-03-7031	6442-R3D-Z								
26-03-3031	6442-3-Z		26-03-4030	6442-R3-Z					26-03-7041	6442-R4D-Z								
26-03-3041	6442-4-Z		26-03-4041	6442-R4-Z						6442-R5D-Z								
26-03-3051	6442-5-Z		26-03-4050	6442-R5-Z						6442-R6D-Z								
26-03-3061	6442-6-Z		26-03-4061	6442-R6-Z					26-03-7071	6442-R7D-Z								
26-03-3071	6442-7-Z		26-03-4070	6442-R7-Z						6442-R8D-Z								
26-03-3081	6442-8-Z		26-03-4081	6442-R8-Z					26-03-7091	6442-R9D-Z								
26-03-3091	6442-9-Z		26-03-4090	6442-R9-Z						6442-R10D-Z								
26-03-3101	6442-10-Z		26-03-4101	6442-R10-Z					26-03-7121	6442-R12D-Z								
26-03-3111	6442-11-Z		26-03-4111	6442-R11-Z						6442-R13D-Z								
26-03-3121	6442-12-Z		26-03-4121	6442-R12-Z						6442-R14D-Z								
26-03-3131	6442-13-Z		26-03-4131	6442-R13-Z						6442-R15D-Z								
26-03-3141	6442-14-Z		26-03-4141	6442-R14-Z						6442-R16D-Z								
26-03-3151	6442-15-Z		26-03-4151	6442-R15-Z					26-03-7171	6442-R17D-Z								
26-03-3161	6442-16-Z		26-03-4161	6442-R16-Z						6442-R18D-Z								
26-03-3171	6442-17-Z		26-03-4171	6442-R17-Z						6442-R19D-Z								
26-03-3181	6442-18-Z		26-03-4181	6442-R18-Z						6442-R20D-Z								
26-03-3191	6442-19-Z		26-03-4191	6442-R19-Z						6442-R21D-Z								
26-03-3201	6442-20-Z		26-03-4201	6442-R20-Z						6442-R22D-Z								
26-03-3211	6442-21-Z		26-03-4211	6442-R21-Z						6442-R23D-Z								
26-03-3221	6442-22-Z		26-03-4221	6442-R22-Z						6442-R24D-Z								
26-03-3231	6442-23-Z		26-03-4231	6442-R23-Z					26-03-7042	6442-R4D-B	2							
26-03-3241	6442-24-Z		26-03-4241	6442-R24-Z					26-03-7072	6442-R7D-C	3							
	6442-15-B	2	26-03-4043	6442-R4-C	3				26-03-7092	6442-R9D-B	2							
	6442-9-B	2	26-03-4055	6442-R5-E	5				26-03-7093	6442-R9D-E	5							
	6442-12-F	6	26-03-4065	6442-R6-E	5				26-03-7122	6442-R12D-E	5							
	6442-7-51	1,7	26-03-4086	6442-R8-F	6				26-03-7172	6442-R17D-E	5							
	6442-9-51	1,9	26-03-4097	6442-R9-G	7													
	6442-9-52	2,9	26-03-4108	6442-R10-H	8													
	6442-8-B	2	26-03-4120	6442-R12-J	10													
	6442-8-F	6	26-03-4157	6442-R15-G	7													
	6442-10-D	4	26-03-4073	6442-R7-C	3													
	6442-5-B	2	26-03-4094	6442-R9-D	4													
	6442-10-B	2	26-03-4096	6442-R9-F	6													
	6442-5-C	3	26-03-4092	6442-R9-B	2													
	6442-13-B	2	26-03-4064	6442-R6-D	4													
	6442-11-E	5	26-03-4075	6442-R7-E	5													
			26-03-4095	6442-R9-E	5													
			26-03-4085	6442-R8-E	5													
			26-03-4072	6442-R7-B	2													
			26-03-4063	6442-R6-C	3													
			26-03-4092	6442-R9-B	2													
			26-03-4125	6442-R12-E	5													
			26-03-4123	6442-R12-C	3													
			26-03-4076	6442-R7-F	6													
			26-03-4128	6442-R12-I	9													
			26-03-4143	6442-R14-C	3													
			26-03-4093	6442-R9-C	3													
			26-03-4094	6442-R9-D	4													
			26-03-4052	6442-R5-B	2													
			26-03-4103	6442-R10-C	3													
			26-03-4042	6442-R4-B	2													
			26-03-4106	6442-R10-F	6													
				6442-R12-F	6													
			26-03-4112	6442-R11-B	2													
				6442-R13-B	2													
			26-03-4175	6442-R17-E	5													
			26-03-4102	6442-R10-B	2													
			26-03-4032	6442-R3-B	2													
			26-03-4082	6442-R8-B	2													
				6442-R7-51	1,7													
				6442-R9-51	1,9													
			26-03-4099	6442-R9-52	2,9													
			26-03-4109	6442-R10-51	1,10													
				6442-R4-A	14													
			26-03-4152	6442-R15-N	14													
				6442-R10-51	1,10													
			26-03-4083	6442-R8-5	3													

UPDATE TITLE EC NO. U1E2009-348 DRAWING/PEER 2009/07/13 CHECK/ISSUER 2009/07/13 APPROVED/ISS 2009/07/02 PREPARED/ISS	QUALITY SYMBOLS ▽=0 ▽=0	GENERAL TOLERANCES (UNLESS SPECIFIED) 4 PLACES +--- +--- 3 PLACES +--- +--- 2 PLACES +--- +--- 1 PLACE +--- +--- ANGULAR ±1/2°	DIMENSION STYLE MM/MIN	SCALE --- INCH	DESIGN UNITS INCH	THIRD ANGLE PROJECTION	
	DRAWN BY POLGAR CHECKED BY PATEL APPROVED BY LENZ	DATE 1986/12/02 DATE 1986/12/02 DATE 1986/12/02	TITLE KK (3.96)/156 TRIFURCON CRIMP TERMINAL HOUSING 6442 SERIES	MATERIAL NO. SEE CHART	DOCUMENT NO. SD-6442	SHEET NO. 3 OF 4	THIS DRAWING CONTAINS INFORMATION THAT IS PROPRIETARY TO MOLEX INCORPORATED AND SHOULD NOT BE USED WITHOUT WRITTEN PERMISSION