

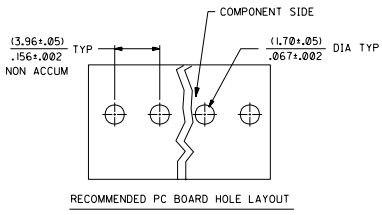
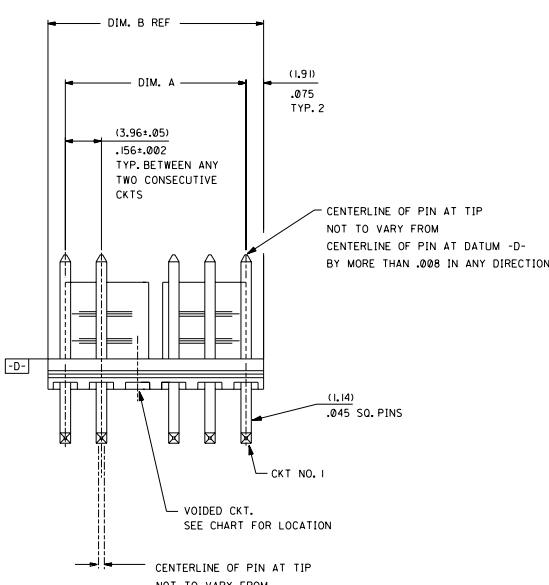
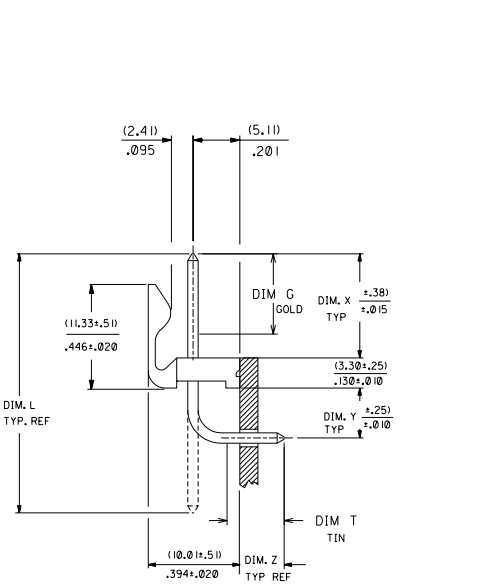
Excellent Integrated System Limited

Stocking Distributor

Click to view price, real time Inventory, Delivery & Lifecycle Information:

[Molex Connector Corporation](#)
[0026605131](#)

For any questions, you can email us directly:
sales@integrated-circuit.com

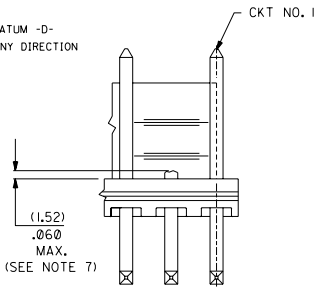


- NOTES:**
- PRECEDING ENG. NO. IN CHART DESIGNATES STANDARD PRODUCT.
 - SOLDERABILITY: WHEN PARTS ARE SOLDERED AT A TEMPERATURE OF 230°C (446°F) FOR 5 SECONDS, EACH SOLDERED SURFACE SHALL BE A MINIMUM OF 95% COVERED WITH A SMOOTH CONTINUOUS ADHERENT COATING. FOR OTHER INFORMATION SEE ES-152.
 - PIN PUSH OUT FORCE: PRIOR TO SOLDERING, A 3 POUND MINIMUM FORCE (IN EITHER DIRECTION) SHALL BE REQUIRED TO PUSH THE PIN OUT OF THE HEADER.
 - FOR ADDITIONAL INFORMATION AND TESTING PROCEDURES SEE PS-08-50.
 - PARTS ARE STACKABLE END TO END ON (3.96)/.156 CENTERS.
 - FOR PART WITH PEGS SEE DWG NO. SDA-42492
 - BURRS DUE TO CUTTING OFF OF PINS MUST NOT VARY FROM CENTERLINE OF PIN AT DATUM -D- BY MORE THAN .008 IN ANY DIRECTION.

MATERIAL: HEADER: GLASS FILLED POLYESTER, 94V-0, MOLDED NATURAL (WHITE).
PIN: BRASS

PLATINGS:

(102) ELECTRO TIN .000450/.000200 OVER .000200/.000100 COPPER
(567) SELECT GOLD 15 M.I. MIN, SELECT TIN/LEAD 100 M.I. MIN., OVER NICKEL
(569) SELECT GOLD 30 M.I. MIN, SELECT TIN/LEAD 100 M.I. MIN., OVER NICKEL
FOR ADDITIONAL INFORMATION SE SDES-88.



NO. OF CKT'S.	DIM. A	DIM. B
2	(3.96±.05)	(7.77)
3	(5.94±.075)	(11.73)
4	(7.92±.08)	(15.70)
5	(9.90±.10)	(19.66)
6	(11.88±.12)	(23.62)
7	(13.86±.14)	(27.58)
8	(15.84±.16)	(31.55)
9	(17.82±.18)	(35.51)
10	(19.80±.20)	(39.47)
11	(21.78±.22)	(43.43)
12	(23.76±.24)	(47.40)
13	(25.74±.26)	(51.36)
14	(27.72±.28)	(55.32)
15	(29.70±.30)	(59.28)
16	(31.68±.32)	(63.25)
17	(33.66±.34)	(67.21)
18	(35.64±.36)	(71.17)

REL SHT 5 UCP2003-0755 11/6/2002 SAMIEC	REL SHT 4 UCR2002-0555 12/17/01 SAMIEC	ADD PACK SPEC UCR2002-0087 7/26/01 SAMIEC	DIMENSIONS SHOWN (METRIC) INCH UNLESS OTHERWISE SPECIFIED TOLERANCES: ANGULAR ±1/2°	<table border="1"> <tr><td>1 PLACE</td><td>INCH</td><td>METRIC</td></tr> <tr><td>2 PLACE</td><td>±</td><td>±</td></tr> <tr><td>3 PLACE</td><td>±</td><td>±</td></tr> </table>	1 PLACE	INCH	METRIC	2 PLACE	±	±	3 PLACE	±	±	<table border="1"> <tr><td>1 PLACE</td><td>±</td><td>±</td></tr> </table>	1 PLACE	±	±	<table border="1"> <tr><td>DRG. NO.</td><td>541792X1</td></tr> <tr><td>APP'D.</td><td>LENZ</td></tr> <tr><td>BY</td><td></td></tr> </table>	DRG. NO.	541792X1	APP'D.	LENZ	BY		<table border="1"> <tr><td>DRG. NO.</td><td>SDA-41792</td></tr> <tr><td>DATE</td><td>09/09/87</td></tr> <tr><td>SHEET NO.</td><td>1 OF 6</td></tr> </table>	DRG. NO.	SDA-41792	DATE	09/09/87	SHEET NO.	1 OF 6
1 PLACE	INCH	METRIC																													
2 PLACE	±	±																													
3 PLACE	±	±																													
1 PLACE	±	±																													
DRG. NO.	541792X1																														
APP'D.	LENZ																														
BY																															
DRG. NO.	SDA-41792																														
DATE	09/09/87																														
SHEET NO.	1 OF 6																														
TITLE: FRICTION LOCK HEADER ASSY .156 C BENT SQ PINS, W/O PEGS 41792 SERIES DWG.			DIMENSIONS SHOWN (METRIC) INCH UNLESS OTHERWISE SPECIFIED TOLERANCES: ANGULAR ±1/2°		REVISIONS ONLY ON CAD SYSTEM REVISIONS ONLY ON CAD SYSTEM		MOLEX INCORPORATED 1000 N. GARDEN AVENUE BELLFLORES, CALIF. 91011																								
LTR. REVISIONS LTR. REVISIONS			FILE NAME: S41792X1		THIS DRAWING CONTAINS INFORMATION THAT IS PROPRIETARY TO MOLEX AND SHOULD NOT BE USED WITHOUT WRITTEN PERMISSION.		DRG. NO. SDA-41792 DATE 09/09/87 SHEET NO. 1 OF 6																								

