

Excellent Integrated System Limited

Stocking Distributor

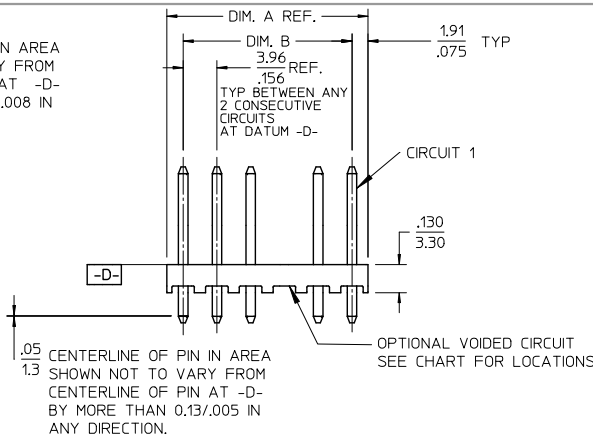
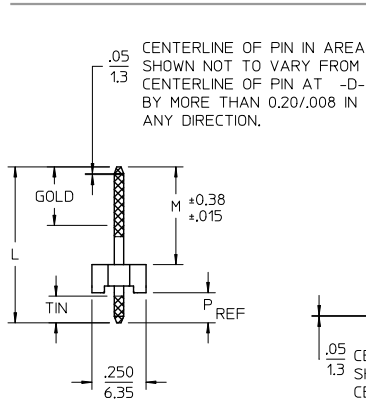
Click to view price, real time Inventory, Delivery & Lifecycle Information:

[Molex Connector Corporation](#)

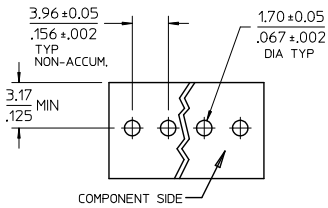
[0027602021](#)

For any questions, you can email us directly:

sales@integrated-circuit.com



- NOTES:
1. MATERIAL: HEADER-GLASS FILLED POLYESTER, 94V-0, MOLDED NATURAL (WHITE).
 2. FINISH: (197) OVERALL REFLOWED MATTE TIN: 0.00152/.000060 MIN. OVER 0.00127/.000050 MIN. NICKEL OVERALL (222) OVERALL MATTE TIN: 0.00254/.000100 MIN TIN OVER 0.00127/.000050 MIN NICKEL. (208) SELECT GOLD: 0.00038/.000015 MIN. SELECT TIN: 0.00254/.000100 MIN. OVERALL NICKEL UNDERPLATE: 0.00127/.000050 MIN. (228) SELECT GOLD: 0.00076/.000030 MIN. SELECT TIN: 0.00254/.000100 MIN. OVERALL NICKEL UNDERPLATE: 0.00127/.000050 MIN. (241) SELECT GOLD: 0.00051/.000020 MIN. SELECT TIN: 0.00254/.000100 MIN. OVERALL NICKEL UNDERPLATE: 0.00127/.000050 MIN.
 3. PRODUCT SPECIFICATION: SEE PS-08-50 & PS-40-02.
 4. PACKAGING INFORMATION: SEE CHARTS
 5. SOLDERABILITY: PER SMES-152.
 6. PIN PUSH-OUT FORCE: 3 LB MIN PRIOR TO SOLDERING
 7. PARTS ARE STACKABLE END TO END ON 3.96/.156 CENTERS.
 8. FOR PARTS WITH PEGS, SEE DWG.NO. SDA-42491.
 9. PART CONFORMS TO CLASS B REQUIREMENTS OF COSMETIC SPECIFICATION PS-45499-002.



RECOMMENDED PC BOARD HOLE LAYOUT

| CKT | DIM. A | DIM. B |
|-----|----------------|--------------------------|
| 2 | 7.77 .306 | 3.96±0.05 .156±.002 |
| 3 | 11.73 .462 | 7.92±0.08 .312±.003 |
| 4 | 15.70 .618 | 11.89±0.08 .468±.003 |
| 5 | 19.66 .774 | 15.85±0.10 .624±.004 |
| 6 | 23.62 .930 | 19.81±0.10 .780±.004 |
| 7 | 27.58 1.086 | 23.77±0.10 .936±.004 |
| 8 | 31.55 1.242 | 27.74±0.13 1.092±.005 |
| 9 | 35.51 1.398 | 31.70±0.13 1.248±.005 |
| 10 | 39.47 1.554 | 35.66±0.13 1.404±.005 |
| 11 | 43.43 1.710 | 39.62±0.15 1.560±.006 |
| 12 | 47.40 1.866 | 43.59±0.15 1.716±.006 |
| 13 | 51.36 2.022 | 47.55±0.15 1.872±.006 |
| 14 | 55.32 2.178 | 51.51±0.18 2.028±.007 |
| 15 | 59.28 2.334 | 55.47±0.18 2.184±.007 |
| 16 | 63.25 2.490 | 59.44±0.18 2.340±.007 |
| 17 | 67.21 2.646 | 63.40±0.20 2.496±.008 |
| 18 | 71.17 2.802 | 67.36±0.20 2.652±.008 |

| | | | | | | | | | |
|--|--------------------------------------|---------------------------------------|-----------------------|---|------------|--|--------------|------------------------|--|
| ADD FINISH 197, 241 EC NO: UCP2012-0114 DRWN:MMSTROH 2011/07/26 CHKD:KKIPPER 2011/10/21 APPR:FSM,TH 2011/10/28 | QUALITY SYMBOLS ▽=0 ▽=0 ▽=0 | GENERAL TOLERANCES (UNLESS SPECIFIED) | | DIMENSION STYLE | | SCALE | DESIGN UNITS | THIRD ANGLE PROJECTION | |
| | | | | MM/IN | | 2:1 | INCH | | |
| | | 4 PLACES ± --- ± --- | 3 PLACES ± --- ± .010 | DRAWN BY | DATE | TITLE | | | |
| | | 2 PLACES ± 0.25 ± .015 | 1 PLACE ± 0.38 ± --- | JSCHAFFER | 2003/11/03 | KK .156 HEADER ASSY FLAT VERT W/O PEGS | | | |
| | ANGULAR ±1/2° | SAMIEC | 2004/03/24 | MOLEX INCORPORATED | | | | | |
| DRAFT WHERE APPLICABLE MUST REMAIN WITHIN DIMENSIONS | | MATERIAL NO. | | SEE CHART | | DOCUMENT NO. | | | |
| | | SIZE A | | THIS DRAWING CONTAINS INFORMATION THAT IS PROPRIETARY TO MOLEX INCORPORATED AND SHOULD NOT BE USED WITHOUT WRITTEN PERMISSION | | | | | |

| | |
|-------|-----|
| 2-* | J |
| 1 | J |
| SHEET | REV |