

Excellent Integrated System Limited

Stocking Distributor

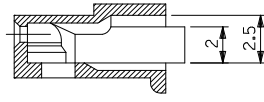
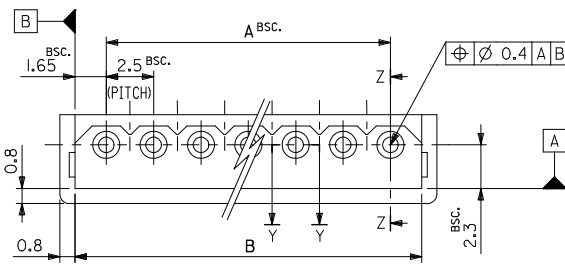
Click to view price, real time Inventory, Delivery & Lifecycle Information:

[Molex Connector Corporation](#)
[0039026041](#)

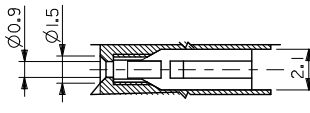
For any questions, you can email us directly:

sales@integrated-circuit.com

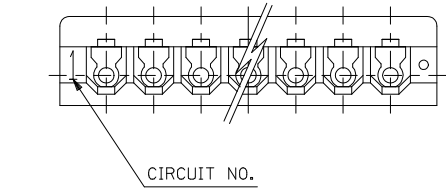
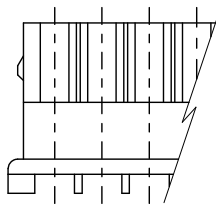
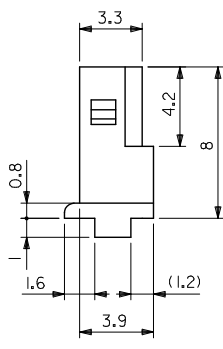
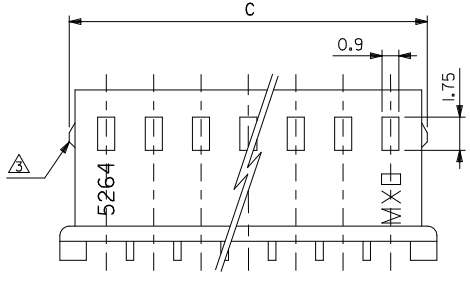
10 9 8 7 6 5 4 3 2 1



SECT.Z-Z



SECT.Y-Y



18.9	18.3	15	7
11.4	10.8	7.5	4
8.9	8.3	5	3
6.4	5.8	2.5	2
DIM. C	DIM. B	DIM. A	NO. OF CKTS.

REVISED EC NO. J2014-1611 DRAWN BY TYAJIMA01 2014/05/17 CHIKIDAKAKAWA 2014/05/30 APPR. NUKITA 2014/05/30 REV D	GENERAL TOLERANCES (UNLESS SPECIFIED) 10 UNDER ± 0.2 10 OVER 30 UNDER ± 0.25 30 OVER ± 0.3 ANGULAR ± 3 ° DRAFT WHERE APPLICABLE MUST REMAIN WITHIN DIMENSIONS		DIMENSION STYLE MM ONLY DRAWN BY TYAJIMA01 DATE 2013/12/16 CHECKED BY KASAKAWA DATE 2013/12/19 APPROVED BY NUKITA DATE 2014/01/07		SCALE 5:1	DESIGN UNITS METRIC	THIRD ANGLE PROJECTION	
	TITLE 2.5 LOW PROFILE RECEPTACLE HOUSING							
	MATERIAL NO. 66NYLON, UL94V-0 DOCUMENT NO. SD-5264-002							
	SHEET NO. 1 OF 2							

9 8 7 6 5 4 3 2 1

10 9 8 7 6 5 4 3 2 1

NOTES

1. SUITABLE TERMINAL : 5263 SERIES
2. MATES WITH : 5267, 5268 SERIES
3. 9 CIRCUITS OR MORE WITHOUT LOCK.
4. LEGEND

5264 - N - **

BASE NUMBER _____
 CIRCUIT SIZE _____
 DYED COLOR _____
 BL : BLACK
 BU : BLUE
 GR : GREEN
 RE : RED
 YE : YELLOW

				39-02-6073	5264-07-GR						7
39-02-6035	5264-03-YE	39-02-6044	5264-04-RE			39-02-6042	5264-04-BU	39-02-6041	5264-04-BL		4
39-02-6025	5264-02-YE	39-02-6024	5264-02-RE	39-02-6033	5264-03-GR						3
EDP NO.	ENG. NO.	EDP NO.	ENG. NO.	EDP NO.	ENG. NO.	EDP NO.	ENG. NO.	EDP NO.	ENG. NO.		2
5264-N-YE		5264-N-RE		5264-N-GR		5264-N-BU		5264-N-BL			NO. OF CKTS.
REVISED IEC NO. J2014-1611 DRAWN: TYAJIMA01 2014/05/27 CHIKIDAKAKAWA 2014/05/30 APPROV: NUKITA 2014/05/30 DESCRIPTION REV D				GENERAL TOLERANCES (UNLESS SPECIFIED)		DIMENSION STYLE MM ONLY		SCALE ---	DESIGN UNITS METRIC	THIRD ANGLE PROJECTION	
				10 UNDER	± 0.2	DRAWN BY TYAJIMA01		DATE 2013/12/16	TITLE 2.5 LOW PROFILE RECEPTACLE HOUSING DOCUMENT NO. SD-5264-002 SHEET NO. 2 OF 2		
10 OVER	30 UNDER	± 0.25	CHECKED BY KASAKAWA		DATE 2013/12/19						
30 OVER		± 0.3	APPROVED BY NUKITA		DATE 2014/01/07						
ANGULAR		± 3 °	MATERIAL NO.		SEE SHEET 1						
DRAFT WHERE APPLICABLE MUST REMAIN WITHIN DIMENSIONS				SIZE A3	THIS DRAWING CONTAINS INFORMATION THAT IS PROPRIETARY TO MOLEX INCORPORATED AND SHOULD NOT BE USED WITHOUT WRITTEN PERMISSION						

9 8 7 6 5 4 3 2 1