

Excellent Integrated System Limited

Stocking Distributor

Click to view price, real time Inventory, Delivery & Lifecycle Information:

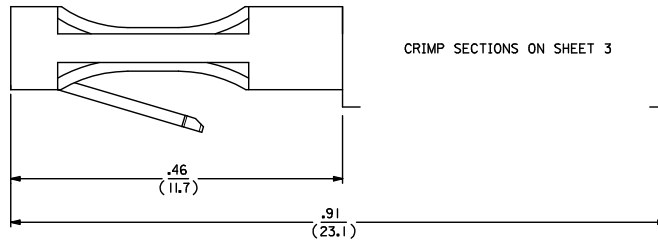
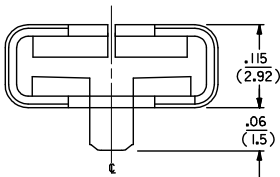
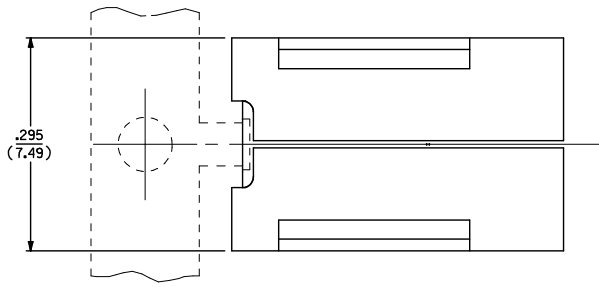
[Molex Connector Corporation](#)
[0040021601](#)

For any questions, you can email us directly:

sales@integrated-circuit.com

NOTES:

- 1 THIS TERMINAL IS FOR USE WITH .250/(6.35) X .032/(0.8) SPADES AND CRIMPING TO #10 TO #18 AWG WIRE WITH .031/(0.79) THICK INSULATION.
- 2 IN ANY HOUSING DESIGN USING THIS TERMINAL, ESPECIALLY WHEN LOW INSERTION FORCES ARE EXPECTED, SOME SORT OF LOCKING DEVICE SHOULD BE CONSIDERED.



MATERIAL:
SEE SHEET 2
FINISH:
SEE SHEET 2

3	K1
2	H2
1	K3

FIX BLOCK TOLERANCE DEC NO: UCP2015-0531 DRAWN BY: ZHANG, HAO CHKD: BELL APPR: SMITH DATE: 2017/06/12 DATE: 06/17/2017 DATE: 2017/06/15	QUALITY SYMBOLS ∇=0 ∇=0 ∇=0	GENERAL TOLERANCES (UNLESS SPECIFIED)		DIMENSION STYLE IN/MM		SCALE 10:1	DESIGN UNITS INCH	THIRD ANGLE PROJECTION	
		4 PLACES ± --- ± ---	mm	INCH	DRAWN BY	DATE	TITLE TERMINAL PUSH-ON CRIMP MOLEX INCORPORATED MATERIAL NO. SEE CHART DOCUMENT NO. SD-41422-3* SHEET NO. 1 OF 3		
		3 PLACES ± --- ± .010			CHKD BY	DATE			
		2 PLACES ± 0.25 ± .014			RHR	DATE			
1 PLACE ± 0.35 ± ---			APPR BY	DATE					
		ANGULAR ± 1/2°							
DRAFT WHERE APPLICABLE MUST REMAIN WITHIN DIMENSIONS		SEE CHART		THIS DRAWING CONTAINS INFORMATION THAT IS PROPRIETARY TO MOLEX INCORPORATED AND SHOULD NOT BE USED WITHOUT WRITTEN PERMISSION					



PART NO.	ENG. NO.	MATERIAL	MATERIAL EDP NUMBER	FINISH		CONTACT GAP	WIRE RANGE	FORM
				PLATING	LUBRICATION			
040-02-1601	41422-3A2N5A1	A	080-02-1608	2	N	5	A	I
040-02-1602	41422-3A2N5B1	A	080-02-1608	2	N	5	B	I

MATERIALS:

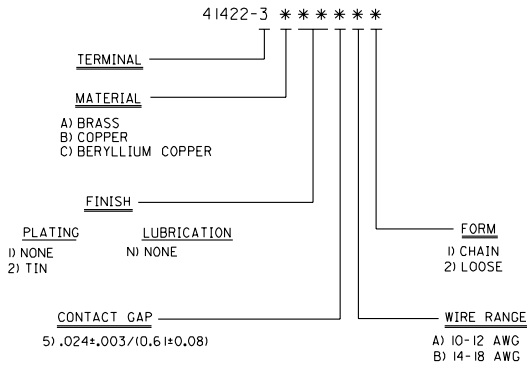
- A) BRASS, ALLOY #C26000, TEMPER: SPRING, .016/(0.4) THICK.
- B) COPPER, ALLOY #C19500, TEMPER: SPRING, .016/(0.4) THICK.
- C) BERYLLIUM COPPER, ALLOY #C17400, .016/(0.4) THICK.

FINISHES:

PLATING

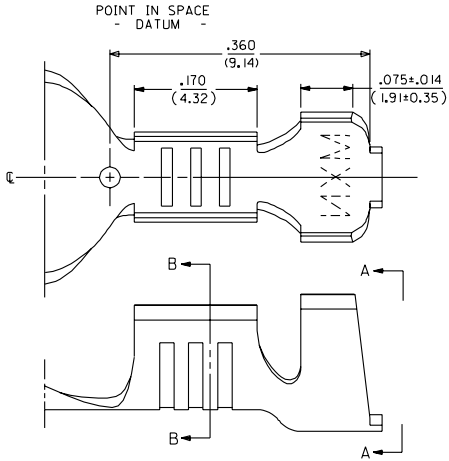
- 2) HOT TIN DIP, SDES-88-P901.

ENGINEERING NUMBER SYSTEM

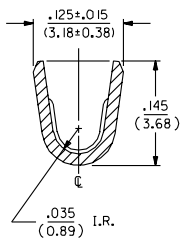


H2	SEE SHEET 1
H1	SEE SHEET 1
G1	SEE SHEET 1
G	SEE SHEET 1
F	SEE SHEET 1
E	SEE SHEET 1
D	SEE SHEET 1
C	SEE SHEET 1

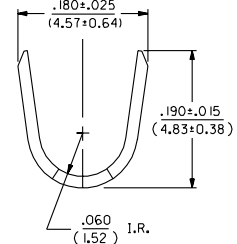
DIMENSIONS SHOWN METRIC INCH UNLESS OTHERWISE SPECIFIED TOLERANCES UNLESS SHOWN		▽ = 0	▽ = 0	REVISE ONLY ON CAD SYSTEM
3 PLACE ±		INCH	METRIC	
2 PLACE #				
1 PLACE #				
DRAFT WHERE APPLICABLE MUST REMAIN WITHIN DIMENSIONS				
MOLEX INCORPORATED		SHEET NO. 2	DATE 01/25/89	
SEE CHART		DRWG. NO. SD-41422-3		
DWG. BY: RAS		CHKD. BY: RHR	FILE NAME: 141422	THIS DRAWING CONTAINS INFORMATION THAT IS PROPRIETARY TO MOLEX INC. AND SHOULD NOT BE USED WITHOUT WRITTEN PERMISSION.



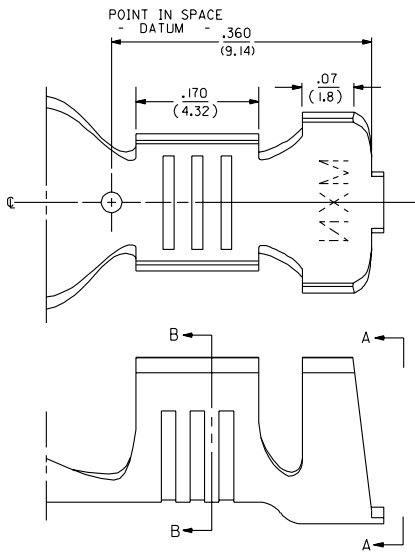
14-18 AWG WIRE



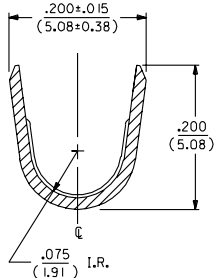
SECTION B-B



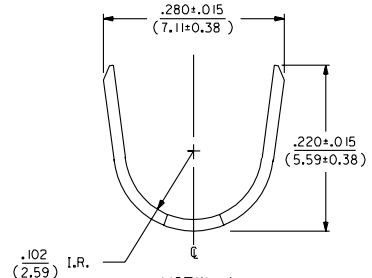
VIEW A



10-12 AWG WIRE



SECTION B-B



VIEW A

REVISIONS	
NO.	DESCRIPTION
K1	SEE SHEET I
K	SEE SHEET I
I	SEE SHEET I
H	SEE SHEET I
D	SEE SHEET I
C	SEE SHEET I

DIMENSIONS SHOWN METRIC INCH UNLESS OTHERWISE SPECIFIED TOLERANCES UNLESS SHOWN AS FOLLOWS		MFG. SH. REV. LTR. REVISIONS	
3 PLACE ± .010	---	0	0
2 PLACE ± .014	± 0.25	REVISE ONLY ON CAD SYSTEM	
1 PLACE ---	± 0.35	TITLE	
DRAFT WHEN APPLICABLE MUST REMAIN WITHIN DIMENSIONS		TERMINAL, PUSH-ON, CRIMP	
MOLEX INCORPORATED		SHEET NO. DATE	
SEE CHART		3 01/30/89	
PART NO. SD-41422-3*		MATERIAL	
DRAWN BY: RWK		SCALE: 1:1	
CHECKED BY: RHR		FILE NO. C	
APP'D. BY:		THIS DRAWING CONTAINS INFORMATION THAT IS PROPRIETARY TO MOLEX INC. AND SHOULD NOT BE USED WITHOUT WRITTEN PERMISSION.	