

## Excellent Integrated System Limited

Stocking Distributor

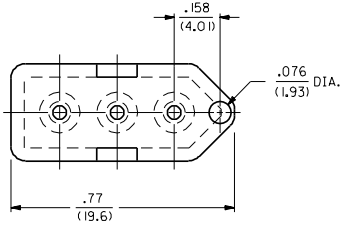
Click to view price, real time Inventory, Delivery & Lifecycle Information:

[Molex Connector Corporation](#)  
[0050291031](#)

For any questions, you can email us directly:

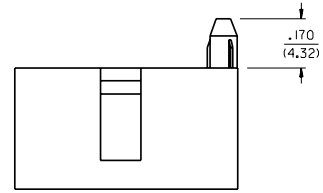
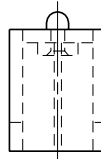
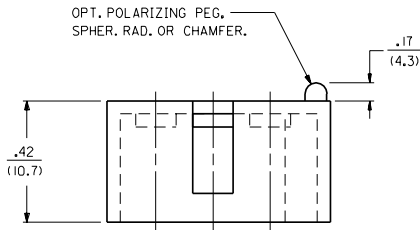
[sales@integrated-circuit.com](mailto:sales@integrated-circuit.com)

PART NO.	ENG. NO.	PEG TYPE	DIA. "A"
50-29-1031	3099-3A1	POLARIZING	.100±.005 (2.54±0.13)
97-00-0151	3099-3B1	NONE	---
50-30-2036	3099-3A2	LOCKING	.103 ±.003/-0.002 (2.62 +0.08/-0.05)

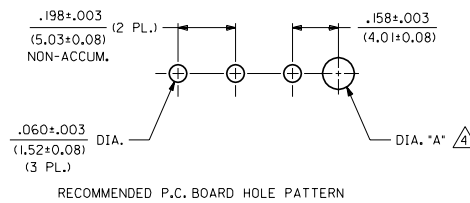
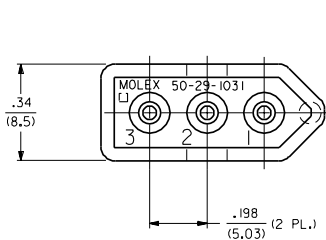


**NOTES:**

- THIS HOUSING FOR USE WITH STANDARD .093/(2.36) SERIES RECEPTACLES.
- MATERIAL:**  
I- UNFILLED POLYESTER, 94V-0, COLOR-BLACK
- THIS HOUSING ACCEPTS 1840, 43080 OR 43631 SERIES PIN AND SOCKET TERMINALS.  
⚠️ ONLY REQUIRED WHEN USING PARTS WITH OPTIONAL POLARIZING OR LOCKING PEG.
- PARTS TO BE MOUNTED ON SUPPORTED EDGE OF P.C. BOARD.



VIEW OF HOUSING SHOWING OPTIONAL LOCKING PEG



RECOMMENDED P.C. BOARD HOLE PATTERN

REV.	DESCRIPTION
G2	FINAL REL. -3A2 ECR 11/7/92 RW
G1	REVISE PER ECR UB 0630 11/27/95 RW
G	CHG. COLOR TO BLK ECR 11/4/93 2-24-94 RW
F	MATL. WAS GLASS FIL'D. ECR US 1669 11/10/95 RW
E	DEL. MAT'L OPT. 2 ECR 12-14-89 AFG 92-10-09 RW
D	REVISE V-D. MAT'L. ECR 12/0079 1/11/92 RW
C	REV. PER DETAIL ECR = 190875 KBW 08-30-89 RW
B	REVISED PER ECR UB 2300 GEP 5-25-89 RW
A	RE. WITH EDP'S ECR UB 2300 GEP 1-25-89 RW

DIMENSIONS SHOWN METRIC INCH UNLESS OTHERWISE SPECIFIED TOLERANCES IN MILLIMETERS		MFG. SH. REV. LTR. REVISIONS	
3 PLACE ± .010	---	REV. 0	REVISIONS
2 PLACE ± .014	± 0.25	TITLE	
1 PLACE ---	± 0.35	3 CKT. HOUSING, ENCLOSED HEADER, .198/(5.03) CENTERS	
DRAFT WHERE APPLICABLE MUST REMAIN WITHIN DIMENSIONS		MOLEX INCORPORATED SHEET NO. DATE 1/25/89	
DRG. BY: GEP		PART NO. SD-3099-3	
CHKD. BY: RW		DRAWING NO.	
APP'D. BY: RAS		FILE NAME: 530993X1	
SCALE: 4:1		THIS DRAWING CONTAINS INFORMATION THAT IS PROPRIETARY TO MOLEX INC. AND SHOULD NOT BE USED WITHOUT WRITTEN PERMISSION. CP	

NO P.S.