

## Excellent Integrated System Limited

Stocking Distributor

Click to view price, real time Inventory, Delivery & Lifecycle Information:

[Molex Connector Corporation](#)  
[0050291061](#)

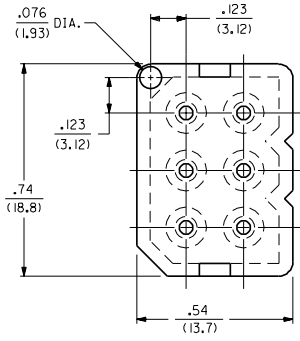
For any questions, you can email us directly:

[sales@integrated-circuit.com](mailto:sales@integrated-circuit.com)

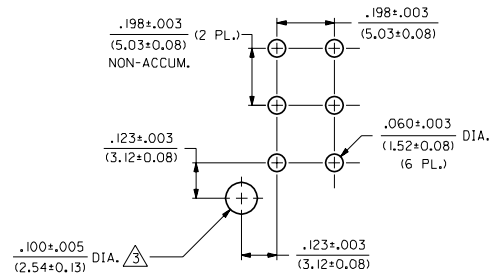
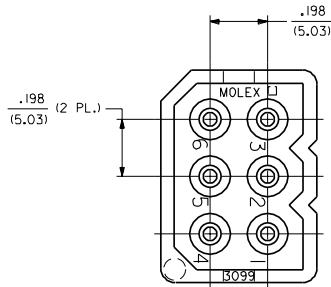
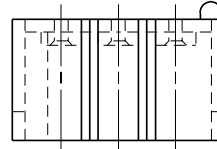
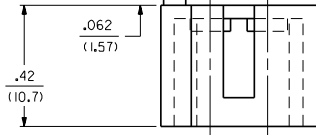
PART NO.	ENG. NO.	POLARIZING PEG OPTION
50-29-1061	3099-6A1	WITH
NOT TOOLED	3099-6B1	WITHOUT

NOTES:

- THIS HOUSING FOR USE WITH STANDARD .093(12.36) SERIES RECEPTACLES.
- MATERIAL:  
1- UNFILLED POLYESTER, 94V-0, COLOR-BLACK
- ONLY REQUIRED WHEN USING PARTS WITH OPTIONAL POLARIZING PEG.
- THIS HOUSING ACCEPTS 1840 SERIES PINS AND 43080 SERIES SOCKET P. C. TERMINALS.
- PARTS TO BE MOUNTED ON SUPPORTED EDGE OF P.C. BOARD.



OPTIONAL POLARIZING PEG SPHER. RAD. OR CHAMFER.



RECOMMENDED P.C. BOARD HOLE PATTERN

REV.	DESCRIPTION
H	REVISED UCR 1988-0051 WANG 98-02-16
G	CHG. COLOR TO BLK ECR #14 0183 2-24-94 RW
F	MAT'L WAS GLASS FIL'D. ECR US 1669 CAC 11/10/95 RW
E	DEL MAT'L OPT. 2 ECR U2-1469 AFG 92-10-09 RW
D	REVISE V-O MAT'L. ECR U2 0079 CAC 11/17/92 RW
C	REV. PER DETAIL ECR # 190875 KBW 08-30-89 RW
B	REVISED PER ECR U30347 GEP 5-25-89 RW
A	REL. WITH EDP'S ECR UB 2300 GEP 1-25-89 RW

DIMENSIONS SHOWN METRIC INCH UNLESS OTHERWISE SPECIFIED TOLERANCES INDICATED BY ±		MFG. SH. REV. LTR. REVISIONS	
3 PLACE ± .010	---	- 0 - 0 REVISE ONLY ON CAD SYSTEM	
2 PLACE ± .014	± 0.25	TITLE	
1 PLACE --- ± 0.35	---	6 CKT. HOUSING, ENCLOSED HEADER, .198/(5.03) CENTERS	
DRAFT WHEN APPLICABLE MUST REMAIN WITHIN DIMENSIONS		MOLEX INCORPORATED	
DRG. BY: GEP		PART NO. SD-3099-6*	
APP'D. RAS		DATE 1/25/89	
SCALE 4 : 1		SEE CHART	
FILE NAME 530396X1		THIS DRAWING CONTAINS INFORMATION THAT IS PROPRIETARY TO MOLEX INC. AND SHOULD NOT BE USED WITHOUT WRITTEN PERMISSION. CP	

NO P.S. 1