

## Excellent Integrated System Limited

Stocking Distributor

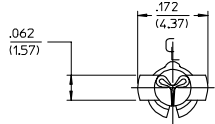
Click to view price, real time Inventory, Delivery & Lifecycle Information:

[Molex Connector Corporation](#)  
[0050348509](#)

For any questions, you can email us directly:

[sales@integrated-circuit.com](mailto:sales@integrated-circuit.com)

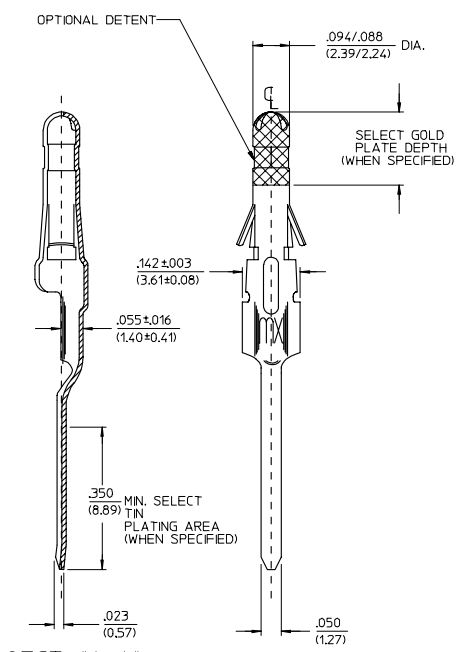
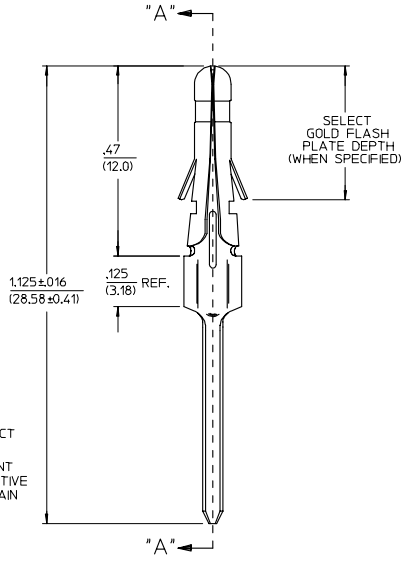
PART NO.	ENG. NO.
02-09-2133	1376-(P909)IL
02-09-2134	1376-A(P909)IL
02-09-6138	1376-(228)IL
02-09-6132	1376-(558)IL
02-09-6134	1376-A(558)IL
50-34-8509	1376-A(P154)IL



**LEGEND**

1376-\*(\*)\*(\*)\*(\*)\*(\*)\*  
 OPTIONAL DETENT  
 BLANK-WITH DETENT  
 A= WITHOUT DETENT  
 FORM L=LOOSE  
 P=PREPLATE  
 BLANK=POSTPLATE  
 FINISH CODE

- NOTES:**
- MATERIAL: BRASS
  - FINISHES:
    - \* 909 HOT TIN DIP .000100/(0.00254) MIN.
    - \* 154 OVERALL TIN .000100/(0.00254) MIN. OVER .000050/(0.00127) MIN. NICKLE OVERALL.
    - 558 SELECT GOLD PLATE .000030/(0.00076) MIN. IN CONTACT AREA OVER .000050/(0.00127) MIN. NICKLE OVERALL WITH .000010/(0.00025) MAX. GOLD FLASH.
    - \* 228 SELECT GOLD PLATE .000030/(0.00076) MIN. IN CONTACT AREA. SELECT TIN PLATE .000100/(0.00254) MIN. IN TAIL AREA OVER .000050/(0.00125) NICKLE OVERALL WITH SELECT GOLD FLASH .000010/(0.00025) MAX IN AREA INDICATED.
    - \* THE PRIMARY SHIPPING CARTON WILL BE LABELED, "COMPLIANT TO ROHS DIRECTIVE 2002/95/EC AND ELV ANNEX II OF DIRECTIVE 2000/53/EC". AND CARTONS WITHOUT THIS LABEL MAY CONTAIN PRODUCT WITH TIN-LEAD.
  - PRODUCT SPECIFICATION: PS-02-09
  - PACKAGING INFORMATION: NOT AVAILABLE.
  - TERMINALS FOR USE WITH 0.093/(2.36) SERIES HOUSINGS.
  - RECOMMENDED P.C. BOARD HOLE SIZE IS .062±.002/(1.57±0.05) DIA.
  - INSERTION FORCE: 3.5 LBS. MAX. WHEN TERMINAL IS INSERTED INTO AN .093 SERIES HOUSING.



SECT. "A-A"

ADD P/N 1376 -AP154L EC NO: UCP2006-2524 DRWIN:ALHAG 2006/05/15 CHKD:LSCHMDT 2006/05/22 APPR:FSMITH 2006/07/14	QUALITY SYMBOLS	GENERAL TOLERANCES (UNLESS SPECIFIED)		SCALE 0.25" THICK SPRING TEMPER	DESIGN UNITS INCH	THIRD ANGLE PROJECTION	REVISE ON CAD ONLY		
		4 PLACES ±.005 ±.005	3 PLACES ±.010 ±.010	2 PLACES ±.025 ±.014	1 PLACE ±0.36 ±.010	ANGULAR ± °	DRAFT WHERE APPLICABLE MUST REMAIN WITHIN DIMENSIONS	APPROVED BY GWF DATE 1991/02/19	MATERIAL NO. SEE CHART
M1	REV			MOLEX INCORPORATED		THIS DRAWING CONTAINS INFORMATION THAT IS PROPRIETARY TO MOLEX INCORPORATED AND SHOULD NOT BE USED WITHOUT WRITTEN PERMISSION			