

## Excellent Integrated System Limited

Stocking Distributor

Click to view price, real time Inventory, Delivery & Lifecycle Information:

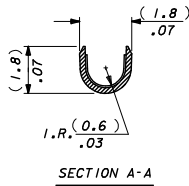
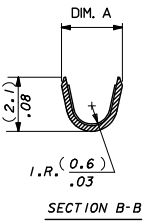
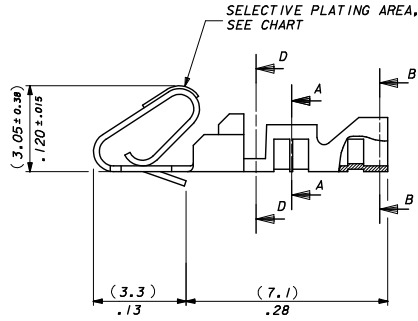
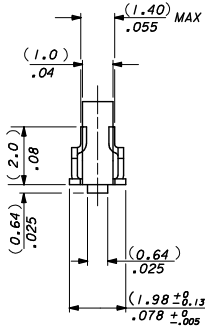
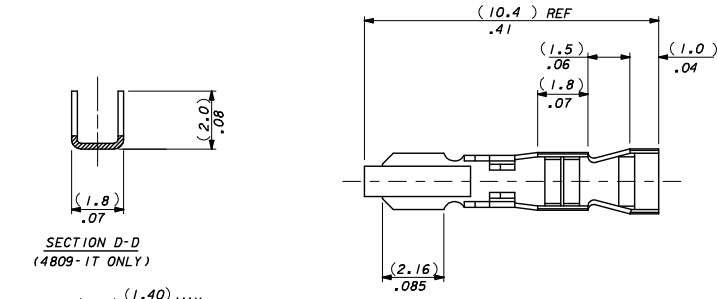
[Molex Connector Corporation](#)  
[0097000001](#)

For any questions, you can email us directly:

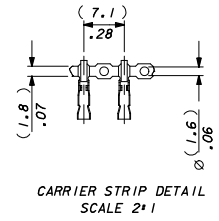
[sales@integrated-circuit.com](mailto:sales@integrated-circuit.com)

**NOTES:**

1. MATERIAL: (0.21)/.008 THICK BRASS.
2. FINISH: SEE SHEET 2.
3. THIS PART CONFORMS TO PRODUCT SPEC. 99020-0088.
4. TERMINAL MUST MEET BEND SPEC. SDES-219.
5. SUITABLE FOR 22-30 GA. WIRE, (1.57)/.062 MAX. INSULATION.
6. THIS PART CONFORMS TO CLASS B REQUIREMENTS OF COSMETIC SPECIFICATION PS-45499-002.



4809-(\*) \* \*  
 \* BLANK : DIM. A = (2.1) / 1.083 REF.  
 M: DIM A = (2.2) / .087 REF.  
 BLANK\*CHAIN FORM TOP  
 FEEDING REEL  
 L\*LOOSE FORM



SELECT GOLD AREA REC NO: UCP2013-5411 DRAWN/KTP/PER 2013/06/14 CHKD: J.BELL 2013/06/17 APPROV: SMITH 2013/06/28	QUALITY SYMBOLS ∇=0 ∇=0 ∇=0	GENERAL TOLERANCES (UNLESS SPECIFIED)		DIMENSION STYLE		SCALE	DESIGN UNITS	THIRD ANGLE PROJECTION	
		mm	INCH	MM/IN		10:1	METRIC	☉	
		4 PLACES ± ---	± ---	DRAWN BY	DATE	TITLE			
		3 PLACES ± ---	± .010	MCC	1986/07/30	ANTI-FISH HOOKING			
		2 PLACES ± 0.25	± .014	CHECKED BY	DATE	TERMINAL KK.(2.50)/.100			
		1 PLACE ± 0.35	± ---	DMORIARTY	2004/10/18	<b>molex</b> DOCUMENT NO. SD-4809-* SHEET NO. 1 OF 2			
		0 PLACE ±	±	APPROVED BY	DATE				
		ANGULAR ± --- °		JDENNEHY	2004/10/19	THIS DRAWING CONTAINS INFORMATION THAT IS PROPRIETARY TO MOLEX INCORPORATED AND SHOULD NOT BE USED WITHOUT WRITTEN PERMISSION			
AN	REV	DRAFT WHERE APPLICABLE MUST REMAIN WITHIN DIMENSIONS		SEE CHART					

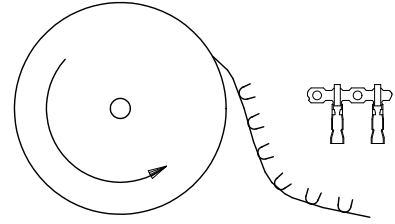
**FINISH NOTES\***

(550) GOLD PLATE (0.00038)/.000015 MIN. OVER (0.00076)/.000030 MIN. NICKEL

IN CONTACT AREA WITH (0.00005)/.000002 MIN. GOLD FLASH OVERALL.

(555) SELECTIVE GOLD (0.00038)/.000015 MIN. OVER (0.00076)/.000030 MIN. NICKEL IN CONTACT AREA ONLY.

(P918) HOT TIN DIP (0.00102-0.00305)/.000040-.000120



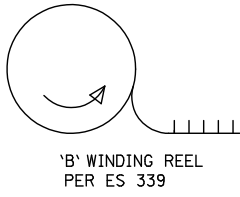
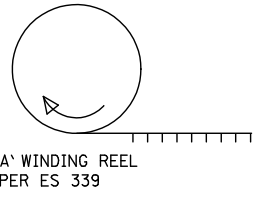
TERMINALS FEEDING FROM THE TOP OF THE REEL ARE STANDARD WOUND

08-55-0110	4809-(555)	CHAIN	(555)	(2.45 - 1.75)/.096 - .069
08-55-0111	↑ -(555)L	LOOSE		
08-56-0120	-(550)	CHAIN	(550)	(2.45 - 1.75)/.096 - .069
08-56-0115	-(550)L	LOOSE		
08-50-0135	↓ -(P918)	CHAIN	(P918)	(2.45 - 1.75)/.096 - .069
08-50-0136	4809 - (P918) L	LOOSE		
PART No	ENG No	FORM	FINISH	DIM . A

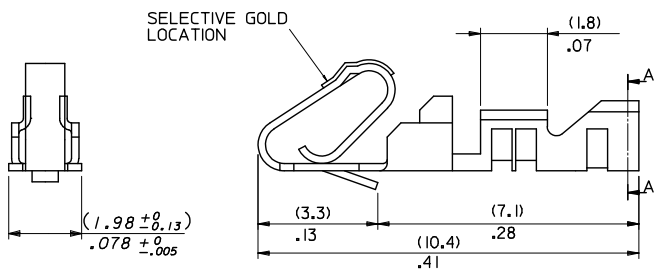
TOP FEEDING REELS ONLY

CORRECT PLATING EC NO: UCP2011-2151 DRAWN/STEWART 2/11/01/18 CHKD/KRIPPER 2/11/01/18 APPROVE/SMITH 2/11/02/04	QUALITY SYMBOLS ▽=0 ▽=0 ▽=0	GENERAL TOLERANCES (UNLESS SPECIFIED)		DIMENSION STYLE		SCALE	DESIGN UNITS	THIRD ANGLE PROJECTION
		mm	INCH	MM/IN	DATE	NTS	METRIC	
AM	DESCRIPTION	4 PLACES ±---	±---	DRAWN BY	1986/07/30	TITLE		
		3 PLACES ±---	±.010	CHECKED BY	DMORIART	ANTI-FISH HOOKING		
		2 PLACES ±0.25	±.014	APPROVED BY	JDENNEHY	TERMINAL KK,(2.50)/.100		
		1 PLACE ±0.35	±---	DATE	2004/10/19	MOLEX INCORPORATED		
		ANGULAR ±---°		MATERIAL NO.		DOCUMENT NO.		SHEET NO.
				SEE CHART		SD-4809-*		2 OF 2
DRAFT WHERE APPLICABLE MUST REMAIN WITHIN DIMENSIONS		THIS DRAWING CONTAINS INFORMATION THAT IS PROPRIETARY TO MOLEX INCORPORATED AND SHOULD NOT BE USED WITHOUT WRITTEN PERMISSION						

10 9 8 7 6 5 4 3 2 1



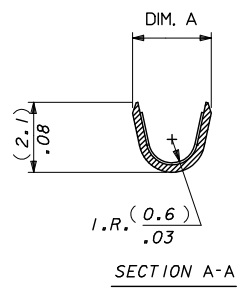
4809C-(\*) \* \*  
INSULATION CRIMP WIDTH  
BLANK: DIM. A = (2.1)/.083 REF.  
M: DIM. A = (2.2)/.087 REF.  
FORM:  
BLANK = CHAIN FORM, TOP FEEDING REEL  
L = LOOSE FORM  
BF = CHAIN FORM, BOTTOM FEEDING REEL



08-55-0112	4809C-(555)	CHAIN	(555)	(2.45-1.75)/.096-.069
08-50-0030	4809C-(P918)M	CHAIN	(P918)	(2.35-2.05)/.093-.081
08-50-0031	4809C-(P918)	CHAIN	(P918)	(2.45-1.75)/.096-.069
08-50-0032	4809C-(P918)L	LOOSE	(P918)	(2.45-1.75)/.096-.069
PART No	ENG No	FORM	FINISH (SEE NOTE-2)	DIM . A
'B' WINDING PER E.S. 339 (CHAIN ONLY)				

97-00-0001	4809C-(P918)BF	CHAIN	(P918)	(2.45-1.75)/.096-.069
PART No	ENG No	FORM	FINISH (SEE NOTE-2)	DIM . A
'A' WINDING PER E.S. 339				

- NOTES:
1. MATERIAL (0.20±0.01)/.008±.0004 THICK BRASS.
  2. FINISH: (555) - SELECTIVE GOLD (0.00038)//0.000015 MIN., OVERALL NICKEL (0.00076)//0.000030 MIN. (P918) - HOT TIN DIP: (0.00102-0.00305)//0.000040-0.00120
  3. THIS PART CONFORMS TO MOLEX PRODUCT SPEC. PS-99020-0088.
  4. SAME AS SD-4809-\* EXCEPT WITH CAT EARS.
  5. FOR 22-30 GAUGE WIRE & (1.57)/.062 DIA. INSULATION MAX.
  6. THIS PART CONFORMS TO CLASS B REQUIREMENTS OF COSMETIC SPECIFICATION PS-45499-002.



SELECT GOLD AREA EC NO: LCP2013-5411 DRAWN BY: PPER 2013/06/14 CHECKED BY: BELL 2013/06/17 APPROVED BY: SMITH 2013/06/28	QUALITY SYMBOLS	GENERAL TOLERANCES (UNLESS SPECIFIED)	DIMENSION STYLE MM/IN	SCALE NTS	DESIGN UNITS METRIC	THIRD ANGLE PROJECTION
	▽=0	4 PLACES ± --- ± ---	DRAWN BY DATE AOD 1999/02/20	TITLE	ANTIFISH HOOKING TERMINAL KK,(2.50)/.100 WITH CAT EARS	
	▽=0	3 PLACES ± --- ± .010	CHECKED BY DATE DMOR IARTY 2004/10/18			
	▽=0	2 PLACES ± 0.25 ± .020	APPROVED BY DATE JDENNEHY 2004/10/19			
	1 PLACE ± 0.51 ± ---					
	0 PLACE ± ±		MATERIAL NO.	DOCUMENT NO.	SHEET NO.	
	ANGULAR ± --- °	DRAFT WHERE APPLICABLE MUST REMAIN WITHIN DIMENSIONS	SEE CHART	SD-4809C-****	1 OF 1	
			SIZE B	THIS DRAWING CONTAINS INFORMATION THAT IS PROPRIETARY TO MOLEX INCORPORATED AND SHOULD NOT BE USED WITHOUT WRITTEN PERMISSION		

9 8 7 6 5 4 3 2 1