

## Excellent Integrated System Limited

Stocking Distributor

Click to view price, real time Inventory, Delivery & Lifecycle Information:

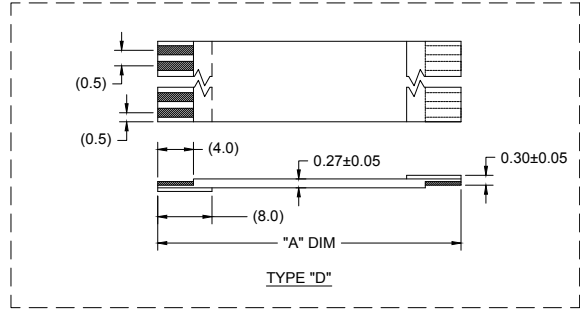
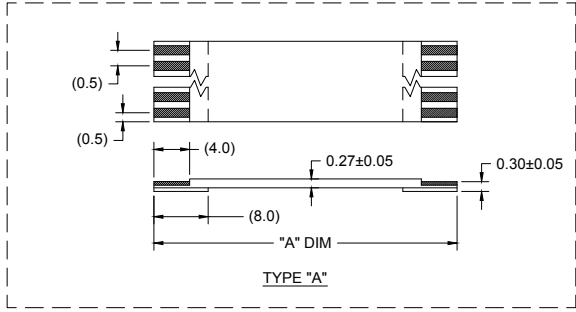
[Molex Connector Corporation](#)  
[0152660766](#)

For any questions, you can email us directly:

[sales@integrated-circuit.com](mailto:sales@integrated-circuit.com)

0.50MM CENTER FFC JUMPER CABLE (HIGH TEMPERATURE) CHART

Table with columns for 'A' DIM. (1.18 to 12.25 INCHES) and rows for STIFFENER, CKTS (6 to 50), and TYPE 'A' / TYPE 'D'.

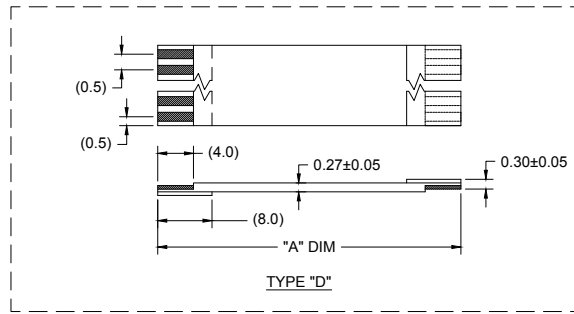
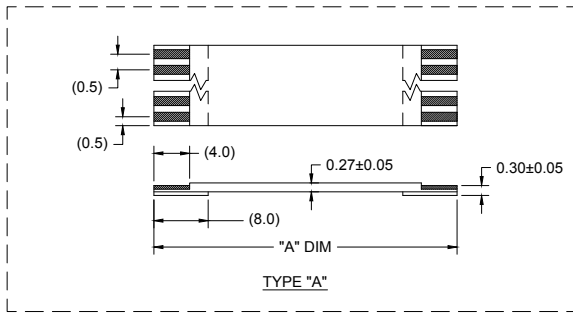


NOTES: 1. NO PRINTING ON JUMPER CABLE UNLESS OTHERWISE SPECIFIED. IF PRINTING IS REQUIRED, THEN IT WOULD BE CONSIDERED A SPECIAL JUMPER CABLE.

Specification form including: QUALITY SYMBOL, GENERAL TOLERANCES (UNLESS SPECIFIED), DIMENSION STYLE (MM), SCALE (METRIC), DESIGN UNITS (METRIC), THIRD ANGLE PROJECTION, Molex logo, and part number SD-15266-001.

0.50MM CENTER FFC JUMPER CABLE (HIGH TEMPERATURE) CHART

"A" DIM.	1.18 ± 0.079 INCHES 30 ± 2.00		2 ± 0.79 INCHES 51 ± 2.00 MM		3 ± .118 INCHES 76 ± 3.00 MM		4 ± .118 INCHES 102 ± 3.00 MM		5 ± .157 INCHES 127 ± 4.00 MM		6 ± .157 INCHES 152 ± 4.00 MM		7 ± .157 INCHES 178 ± 4.00 MM		8 ± .157 INCHES 203 ± 4.00 MM		9 ± .197 INCHES 229 ± 5.00 MM		10 ± .197 INCHES 254 ± 5.00 MM		12 ± .197 INCHES 305 ± 5.00 MM	
STIFFENER	TYPE "A"	TYPE "D"	TYPE "A"	TYPE "D"	TYPE "A"	TYPE "D"	TYPE "A"	TYPE "D"	TYPE "A"	TYPE "D"	TYPE "A"	TYPE "D"	TYPE "A"	TYPE "D"	TYPE "A"	TYPE "D"	TYPE "A"	TYPE "D"	TYPE "A"	TYPE "D"	TYPE "A"	TYPE "D"
CKTS: 7	152660745	152660744	152660747	152660746	152660749	152660748	152660751	152660750	152660753	152660752	152660755	152660754	152660757	152660756	152660759	152660758	152660761	152660760	152660763	152660762	152660765	152660764
CKTS: 9	152660767	152660766	152660769	152660768	152660771	152660770	152660773	152660772	152660775	152660774	152660777	152660776	152660779	152660778	152660781	152660780	152660783	152660782	152660785	152660784	152660787	152660786
CKTS: 11	152660789	152660788	152660791	152660790	152660793	152660792	152660795	152660794	152660797	152660796	152660799	152660798	152660801	152660800	152660803	152660802	152660805	152660804	152660807	152660806	152660809	152660808
CKTS: 13	152660811	152660810	152660813	152660812	152660815	152660814	152660817	152660816	152660819	152660818	152660821	152660820	152660823	152660822	152660825	152660824	152660827	152660826	152660829	152660828	152660831	152660830
CKTS: 15	152660833	152660832	152660835	152660834	152660837	152660836	152660839	152660838	152660841	152660840	152660843	152660842	152660845	152660844	152660847	152660846	152660849	152660848	152660851	152660850	152660853	152660852
CKTS: 17	152660855	152660854	152660857	152660856	152660859	152660858	152660861	152660860	152660863	152660862	152660865	152660864	152660867	152660866	152660869	152660868	152660871	152660870	152660873	152660872	152660875	152660874
CKTS: 19	152660877	152660876	152660879	152660878	152660881	152660880	152660883	152660882	152660885	152660884	152660887	152660886	152660889	152660888	152660891	152660890	152660893	152660892	152660895	152660894	152660897	152660896
CKTS: 21	152660899	152660898	152660901	152660900	152660903	152660902	152660905	152660904	152660907	152660906	152660909	152660908	152660911	152660910	152660913	152660912	152660915	152660914	152660917	152660916	152660919	152660918
CKTS: 23	152660921	152660920	152660923	152660922	152660925	152660924	152660927	152660926	152660929	152660928	152660931	152660930	152660933	152660932	152660935	152660934	152660937	152660936	152660939	152660938	152660941	152660940
CKTS: 25	152660943	152660942	152660945	152660944	152660947	152660946	152660949	152660948	152660951	152660950	152660953	152660952	152660955	152660954	152660957	152660956	152660959	152660958	152660961	152660960	152660963	152660962
CKTS: 27	152660965	152660964	152660967	152660966	152660969	152660968	152660971	152660970	152660973	152660972	152660975	152660974	152660977	152660976	152660979	152660978	152660981	152660980	152660983	152660982	152660985	152660984
CKTS: 29	152660987	152660986	152660989	152660988	152660991	152660990	152660993	152660992	152660995	152660994	152660997	152660996	152660999	152660998	152661001	152661000	152661003	152661002	152661005	152661004	152661007	152661006
CKTS: 31	152661009	152661008	152661011	152661010	152661013	152661012	152661015	152661014	152661017	152661016	152661019	152661018	152661021	152661020	152661023	152661022	152661025	152661024	152661027	152661026	152661029	152661028
CKTS: 33	152661031	152661030	152661033	152661032	152661035	152661034	152661037	152661036	152661039	152661038	152661041	152661040	152661043	152661042	152661045	152661044	152661047	152661046	152661049	152661048	152661051	152661050
CKTS: 35	152661053	152661052	152661055	152661054	152661057	152661056	152661059	152661058	152661061	152661060	152661063	152661062	152661065	152661064	152661067	152661066	152661069	152661068	152661071	152661070	152661073	152661072
CKTS: 37	152661075	152661074	152661077	152661076	152661079	152661078	152661081	152661080	982331083	152661082	152661085	152661084	152661087	152661086	152661089	152661088	152661091	152661090	152661093	152661092	152661095	152661094
CKTS: 39	152661097	152661096	152661099	152661098	152661101	152661100	152661103	152661102	152661105	152661104	152661107	152661106	152661109	152661108	152661111	152661110	152661113	152661112	152661115	152661114	152661117	152661116
CKTS: 41	152661119	152661118	152661121	152661120	152661123	152661122	152661125	152661124	152661127	152661126	152661129	152661128	152661131	152661130	152661133	152661132	152661135	152661134	152661137	152661136	152661139	152661138
CKTS: 43	152661141	152661140	152661143	152661142	152661145	152661144	152661147	152661146	152661149	152661148	152661151	152661150	152661153	152661152	152661155	152661154	152661157	152661156	152661159	152661158	152661161	152661160
CKTS: 45	152661163	152661162	152661165	152661164	152661167	152661166	152661169	152661168	152661171	152661170	152661173	152661172	152661175	152661174	152661177	152661176	152661179	152661178	152661181	152661180	152661183	152661182
CKTS: 47	152661185	152661184	152661187	152661186	152661189	152661188	152661191	152661190	152661193	152661192	152661195	152661194	152661197	152661196	152661199	152661198	152662001	152662000	152662003	152662002	152662005	152662004
CKTS: 49	152661207	152661206	152661209	152661208	152661211	152661210	152661213	152661212	152661215	152661214	152661217	152661216	152661219	152661218	152661221	152661220	152661223	152661222	152661225	152661224	152661227	152661226



**NOTES:**  
 1. NO PRINTING ON JUMPER CABLE UNLESS OTHERWISE SPECIFIED. IF PRINTING IS REQUIRED, THEN IT WOULD BE CONSIDERED A SPECIAL JUMPER CABLE.

SEE SHEET 1 EC NO. DRWIN. 3	QUALITY SYMBOL ▽=0 ∇=0	<b>GENERAL TOLERANCES (UNLESS SPECIFIED)</b> <table border="1"> <tr><th>mm</th><th>INCH</th></tr> <tr><td>4 PLACES ±</td><td>±</td></tr> <tr><td>3 PLACES ±</td><td>±</td></tr> <tr><td>2 PLACES ±</td><td>±</td></tr> <tr><td>1 PLACE ±</td><td>±</td></tr> </table>	mm	INCH	4 PLACES ±	±	3 PLACES ±	±	2 PLACES ±	±	1 PLACE ±	±	<b>DIMENSION STYLE</b> MM	<b>SCALE</b> ---	<b>DESIGN UNITS</b> METRIC	THIRD ANGLE PROJECTION				
	mm	INCH																		
	4 PLACES ±	±																		
3 PLACES ±	±																			
2 PLACES ±	±																			
1 PLACE ±	±																			
DRIFT WHERE APPLICABLE MUST REMAIN WITHIN DIMENSIONS		<table border="1"> <tr><td>DRAWN BY</td><td>DATE</td></tr> <tr><td>CHECKED BY</td><td>DATE</td></tr> <tr><td>APPROVED BY</td><td>DATE</td></tr> <tr><td>MATERIAL NO.</td><td>DOCUMENT NO.</td></tr> </table>	DRAWN BY	DATE	CHECKED BY	DATE	APPROVED BY	DATE	MATERIAL NO.	DOCUMENT NO.	<table border="1"> <tr><td>TITLE</td><td>0.50MM CENTER FFC JUMPER CABLE</td></tr> <tr><td colspan="2">MOLEX INCORPORATED</td></tr> <tr><td>SIZE</td><td>C</td></tr> </table>	TITLE	0.50MM CENTER FFC JUMPER CABLE	MOLEX INCORPORATED		SIZE	C	<table border="1"> <tr><td>SHEET NO.</td><td>2 OF 2</td></tr> </table>	SHEET NO.	2 OF 2
DRAWN BY	DATE																			
CHECKED BY	DATE																			
APPROVED BY	DATE																			
MATERIAL NO.	DOCUMENT NO.																			
TITLE	0.50MM CENTER FFC JUMPER CABLE																			
MOLEX INCORPORATED																				
SIZE	C																			
SHEET NO.	2 OF 2																			
THIS DRAWING CONTAINS INFORMATION THAT IS PROPRIETARY TO MOLEX INCORPORATED AND SHOULD NOT BE USED WITHOUT WRITTEN PERMISSION																				