



Distributor of Keystone Electronics: Excellent Integrated System Limited

Datasheet of 8718 - CONN TERM BLK HORZ 5MM .394"L

Contact us: [sales@integrated-circuit.com](mailto:sales@integrated-circuit.com) Website: [www.integrated-circuit.com](http://www.integrated-circuit.com)

---

## Excellent Integrated System Limited

Stocking Distributor

Click to view price, real time Inventory, Delivery & Lifecycle Information:

[Keystone Electronics](#)

[8718](#)

For any questions, you can email us directly:

[sales@integrated-circuit.com](mailto:sales@integrated-circuit.com)

## PC TERMINAL BLOCKS

These versatile PC terminal blocks provide a quick and easy method to attach wire leads to a circuit board. Multiple units may

be interlocked for strips as long as 24 positions inline. Because of accumulating tolerances, we do not recommend longer strips.

- Wire access available in horizontal, 45° or vertical wire entry
- Simplifies termination of removable leads
- Individual leads can be disconnected without disturbing others
- Wire guard helps prevent damage to conductors
- Accepts 22-16 AWG wire
- Mounts easily in pre-drilled or stamped holes
- 5mm spacing

### SPECIFICATIONS

#### MATERIAL:

**Contact:** Brass, Tin Plate  
**Housing:** Blue PBT, UL Rated 94V-0  
**Screw:** Steel, Zinc Plate  
 & Clear Chromate (captivated)

#### ELECTRICAL:

**Current Rating:** 16 Amps  
**Dielectric Strength:** 2500V  
**Insulation Breakdown:** 1500VAC/min.  
**Rated Voltage:** 250V

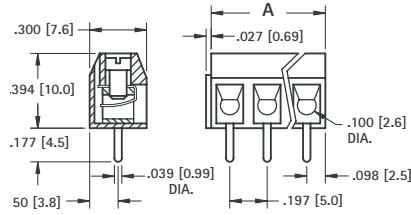
#### MECHANICAL:

**Operating Temp:** 22°F to 248°F (-30°C to 120°C)  
**Peak Temp:** +393°F (+200°C)  
**Wire Size:** Accepts #22-14 AWG

#### HORIZONTAL WIRE ENTRY

##### 5mm SPACING

CAT. NO.	POSITIONS	A DIM.
8718	2	.394 (10.0)
8719	3	.591 (15.0)



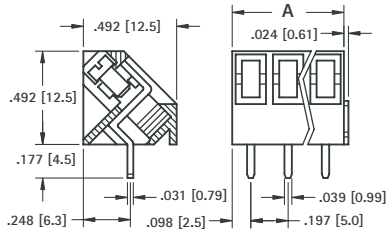
Recommended Mtg. Hole Size: .047 (1.19)



#### 45° WIRE ENTRY

##### 5mm SPACING

CAT. NO.	POSITIONS	A DIM.
8720	2	.394 (10.0)
8721	3	.591 (15.0)



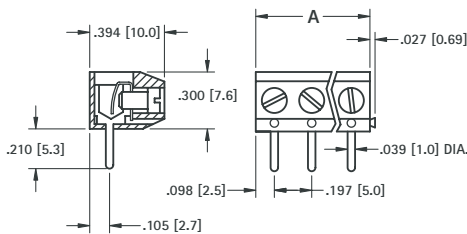
Recommended Mtg. Hole Size: .051 (1.30)



#### VERTICAL WIRE ENTRY

##### 5mm SPACING

CAT. NO.	POSITIONS	A DIM.
8738	2	.394 (10.0)
8739	3	.591 (15.0)



Recommended Mtg. Hole Size: .047 (1.19)



## SCREWLESS - PUSH BUTTON TYPE

### SPECIFICATIONS

#### MATERIAL:

**Terminal:** Brass, Tin Plate  
**Contact:** Stainless Steel  
**Housing:** Blue Nylon 6/6, UL Rated 94V-0

#### ELECTRICAL:

**Current Rating:** 10 Amps  
**Dielectric Strength:** 2500V  
**Insulation Breakdown:** 1500V AC/min.

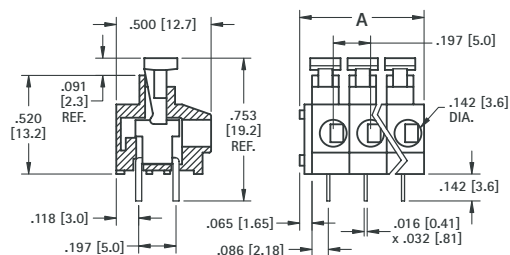
#### MECHANICAL:

**Operating Temp:** 22°F to 248°F (-30°C to 120°C)  
**Peak Temp:** +392°F (+200°C)

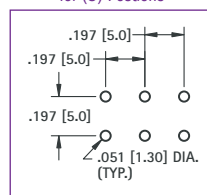
Particularly useful when quick reliable connections are required or when temporary connections are needed, such as on test sets and bread boards. They may be interlocked to achieve the required number of positions.

- Available with two or three terminal positions
- Mounts easily in predrilled or stamped holes
- Suited for both solid and stranded wire
- Accepts #20-18 AWG wire\*
- Stainless Steel spring assures good contact
- Quick reliable connection
- Because of accumulating tolerances, we recommend a maximum of 24 positions per row.

CAT. NO.	POSITIONS	A DIM.
8728	2	.459 (11.7)
8729	3	.656 (16.7)



Mounting Detail for (3) Positions



\*Recommended wire strip length: .300 (7.6)



8728

#### HORIZONTAL WIRE ENTRY



8729