

## Excellent Integrated System Limited

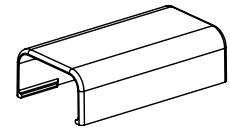
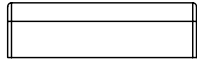
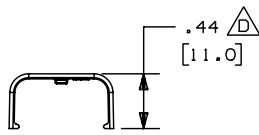
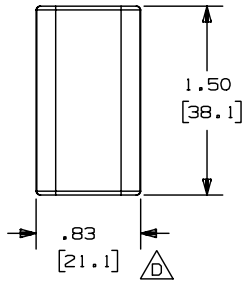
Stocking Distributor

Click to view price, real time Inventory, Delivery & Lifecycle Information:

[Panduit](#)  
[CF3EI-E](#)

For any questions, you can email us directly:  
[sales@integrated-circuit.com](mailto:sales@integrated-circuit.com)

THIS COPY IS PROVIDED ON A RESTRICTED BASIS AND IS NOT TO BE USED IN ANY WAY DETRIMENTAL TO THE INTERESTS OF PANDUIT CORP.



| PANDUIT P/N | WEIGHT                                 |
|-------------|--|
| CF3         | .39 LB / 100 PCS<br>[ 178g / 100 PCS ] |

NOTES:

- SEE CURRENT CATALOG FOR ADDITIONAL PART SUFFIXES TO INDICATE COLOR AND OR PACKAGE QUANTITY.
- DIMENSIONS IN PARENTHESES ARE IN METRIC

CAD FILENAME/LAYERS D34019BA\_DC\_CF3\_01B.PRT

**PANDUIT** CORP. TINLEY PARK, ILLINOIS

COUPLING FITTING (CF3)  
CUSTOMER DRAWING

| REV | DATE     | BY       | CHK | DESCRIPTION                                      | ECN      | R    | CUST | SUP | UNLESS OTHERWISE SPECIFIED, DIMENSIONAL TOLERANCES ARE:<br>(.X) ± .010 (XXX) ± .005<br>(.XX) ± .010 ANGLES ± 1° | UNLESS OTHERWISE SPECIFIED, ALL DIMENSIONS ARE GIVEN IN INCHES, THIRD ANGLE PROJECTION. | SCALE | DWG                     |                  |
|-----|----------|----------|-----|--|----------|------|------|-----|---|---|-------|-------------------------|------------------|
| 3   | 07-02-02 | JHNURMHJ |     | E. REVISED MATERIAL IN DRAWING TITLE BLOCK.      | 34019-10 | RGRO | RGRO |     | DRAWN BY<br>RN  | MAT'L:<br>ABS   | NONE  | DRAWING NO.<br>34019-10 | DWG<br>A<br>SIZE |
| -   | -----    | ----     |     | D. REVISED DIMENSION                             | -----    | ---  | ---  |     |   |   |       |                         |                  |
| 2   | 08-25-00 | REWE     | HIW | C. ADDED CAD FILE NAME<br>B. REVISED AND REDRAWN | 34019-10 | HIW  | HIW  |     | DATE<br>06-04-86  |   |       |                         |                  |
| 1   | 11-24-87 | LDB      | WJB | A. ADDED PARTS CF3E1 AND CF3L1                   | 34019-10 | WJB  |      |     |   |   |       |                         |                  |
| R   | 06-11-86 | RN       | WJB | RELEASED TO PRODUCTION                           | 34019-10 | WJB  |      |     | DATE<br>06-04-86  |   |       |                         |                  |
| REV | DATE     | BY       | CHK | DESCRIPTION                                      | ECN      | R    | CUST | SUP | DATE<br>06-04-86  |   |       |                         |                  |