



**Distributor of Panduit: Excellent Integrated System Limited**

Datasheet of DNF14-250FIM-C - Connector Quick Connect Tab 14-16 AWG 0.250" (6.35mm)  
Crimp

Contact us: [sales@integrated-circuit.com](mailto:sales@integrated-circuit.com) Website: [www.integrated-circuit.com](http://www.integrated-circuit.com)

---

## **Excellent Integrated System Limited**

Stocking Distributor

Click to view price, real time Inventory, Delivery & Lifecycle Information:

[Panduit](#)

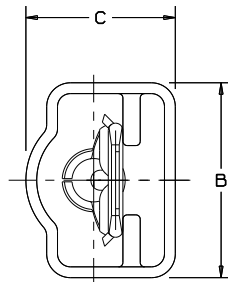
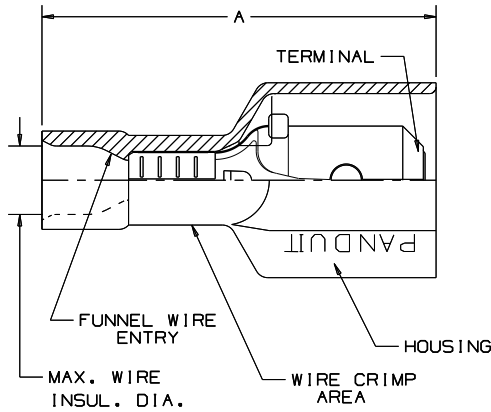
[DNF14-250FIM-C](#)

For any questions, you can email us directly:

[sales@integrated-circuit.com](mailto:sales@integrated-circuit.com)



THIS COPY IS PROVIDED ON A RESTRICTED BASIS AND IS NOT TO BE USED IN ANY WAY DETRIMENTAL TO THE INTERESTS OF PANDUIT CORP.



NOTES:

1. UL LISTED AND CSA CERTIFIED FOR:
  - A. 600V MAX. VOLTAGE RATING.
  - B. 221°F (105°C) MAX. TEMP. RATING (CSA).
  - C. 257°F (125°C) MAX. TEMP. RATING (UL).
  - D. STRANDED COPPER WIRE ONLY.
2. MATERIAL:
  - A. STAMPING-CDA 260 BRASS, NICKEL PLATED
  - B. HOUSING-TYPE 6/6 NYLON
3. DIMENSIONS IN BRACKETS ARE IN mm OR mm<sup>2</sup>
4. COLORS ARE TRANSLUCENT
5. WIRE STRIP LENGTH: 9/32 <sup>+1/32</sup> <sub>0</sub> (7.1 <sup>+0.8</sup> <sub>0</sub>)
6. SEE [www.panduit.com](http://www.panduit.com) FOR PART NUMBER SUFFIX DESIGNATION FOR PACKAGE SIZE.

PART NUMBER	TAB SIZE	WIRE RANGE AWG	COLOR (note 4)	MAX. INSUL.	DIMENSIONS in			CRIMP TOOLS
					A ±.03	B ±.02	C ±.02	
DNF18-250FIM	.250 X .032 (6.3 X 0.8)	22-18 (0.5-1.0)	RED	.133 (3.38)	.90 (22.9)	.42 (10.7)	.27 (6.9)	CT-100A* (*DNF18 ONLY) CT-520 CT-600-A CT-1525 CT-2500
DNF14-250FIM	.250 X .032 (6.3 X 0.8)	16-14 (1.5-2.5)	BLUE	.158 (4.01)	.90 (22.9)	.42 (10.7)	.27 (6.9)	



LISTED  
587H  
E52164



CERTIFIED  
LR31212

					<b>PANDUIT</b> CORP.		TINLEY PARK, ILLINOIS			
					LOOSE PC. FULLY INSULATED MALE DISCONNECT .250 X .032					
08	8/11	SHOR	MODIFIED NOTE #6, ADDED CRIMP TOOLS		PM	CUST	DRAWN BY JV	CHK'D LM	SCALE	DRAWING NO. A41325