

## Excellent Integrated System Limited

Stocking Distributor

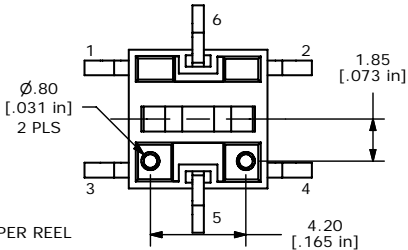
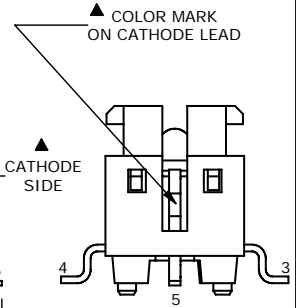
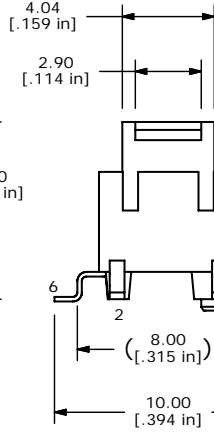
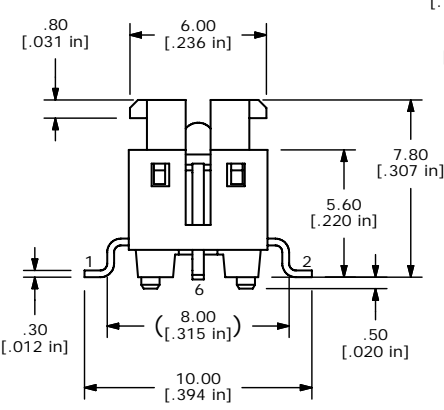
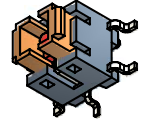
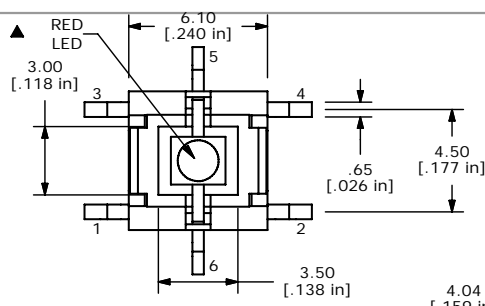
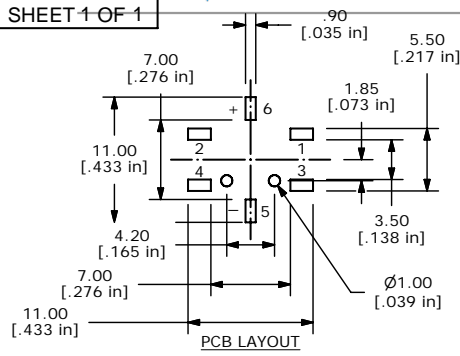
Click to view price, real time Inventory, Delivery & Lifecycle Information:

[E-Switch](#)  
[TL3240F160R](#)

For any questions, you can email us directly:

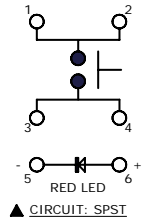
[sales@integrated-circuit.com](mailto:sales@integrated-circuit.com)

SHEET 1 OF 1



LED SPECS		UNITS	VALUE
FORWARD CURRENT		mA	20
FORWARD VOLTAGE @20mA		V	1.8 TYP; 2.6 MAX
LUMINOUS INTENSITY @ 20mA		mcd	75 TYP

- NOTES:
- ALL DIMENSIONS IN MM [INCH]
  - GENERAL TOLERANCE: X.X=±0.4  
X.XX=±0.25
  - CONTACT RATING: 50mA @ 12VDC
  - CONTACT RESISTANCE: 100 mΩ MAX.
  - INSULATION RESISTANCE: 100MΩ MIN @ 500VDC.
  - OPERATING FORCE: 160 ± 50gf
  - TRAVEL: 0.2 ± 0.1mm
  - OPERATING TEMPERATURE: -25°C TO + 70°C
  - OPERATING LIFE: 200,000 CYCLES
  - LED: RED
  - ▲ DENOTES CRITICAL PARAMETERS
  - 2002/95/EC (ROHS) COMPLIANT
  - PARTS TO BE PACKAGED IN TAPE & REEL, 450 PIECES PER REEL



B	20570	Chg T&R qty from 500 to 450	4/25/12	rc
A	20373	New Release	12/12/11	rc
REV	PCR NO	DESCRIPTION	DATE	BY

TITLE TL3240F160R				
SCALE 4	DATE 12/12/2011	DR rc	DWG N324000	REV B

THE INFORMATION CONTAINED IN THIS DOCUMENT IS PROPRIETARY TO E-SWITCH AND IS NOT TO BE COPIED OR TRANSFERRED