

## Excellent Integrated System Limited

Stocking Distributor

Click to view price, real time Inventory, Delivery & Lifecycle Information:

[Cornell Dubilier Electronics](#)

[CDLC351E2R7T11](#)

For any questions, you can email us directly:

[sales@integrated-circuit.com](mailto:sales@integrated-circuit.com)

## Type CDLC Carboncap High-Power Board-Mount Ultracapacitor

### 4 Pin Radial Type



This leading edge, organic electrolyte D cell ultracapacitor can easily handle more than a half million duty cycles and is designed for reverse proof surface mount assembly. They are suited for industrial power back up, renewable energy systems, short term UPS, and telecom applications.

### Highlights

- High Power Performance.
- Ultra Low ESR Characteristics
- Available with Surface Mount 4 pin radial termination

### Specifications

|                             |  |
|-----------------------------|--|
| Operating Temperature Range | -40 °C to +65 °C   |
| Storage Temperature Range   | -40 °C to +70 °C   |
| Rated Voltage Range         | 2.7 Vdc, 2.85 Vdc rated surge  |
| Capacitance Range           | 350 F  |
| Capacitance Tolerance       | -0% / +20%   |
| Life at Room Temperature    | 10 years at rated voltage and 25 °C<br>Capacitance change ≤20%<br>ESR change ≤100%   |
| Life Test                   | 1500 Hours @ rated voltage and +65 °C<br>Capacitance change ≤20% decrease from min. initial value<br>ESR change ≤100% increase from max. initial value |
| Cycle Test                  | 500,000 cycles<br>Capacitance change ≤20%<br>ESR change ≤100%  |
| Shelf Life                  | 2 years<br>Capacitance change ≤10% from min. initial capacitance<br>ESR change ≤50% from max. initial ESR  |
| RoHS Compliant              |  |

### Ratings

| Part Number   | CDLC351E2R7T11 |
|---|----------------|
| Terminal Configuration  | 4 pin radial   |
| <b>Capacitance (F)</b><br>(Discharge w constant current at 25°C)              | 350            |
| <b>ESR, DC (mΩ), Max</b>  | 3.2            |
| <b>Current - Max Peak (A)</b><br>(1 s discharge rate to 50% of rated Voltage) | 220            |
| <b>Leakage current (mA), Max</b><br>after 72 h at +25 °C                      | .32            |
| <b>Usable Power Density, Pd (W/kg)</b><br>(Per IEC 62391-2)                   | 4600           |
| <b>Usable Power (W)</b>   | 276            |
| <b>Impedance match power, (W/kg)</b>  | 9500           |
| <b>Gravimetric energy density, Emax (Wh/kg)</b>                               | 5.9            |
| <b>Energy available (Wh)</b><br>(At rated voltage)                            | .35            |
| <b>Weight (kg)</b>  | .060           |
| <b>Maximum Continuous Current (Arms)</b><br>(ΔT=15°C)                         | 21             |
| <b>Short circuit current (A)</b>  | 840            |

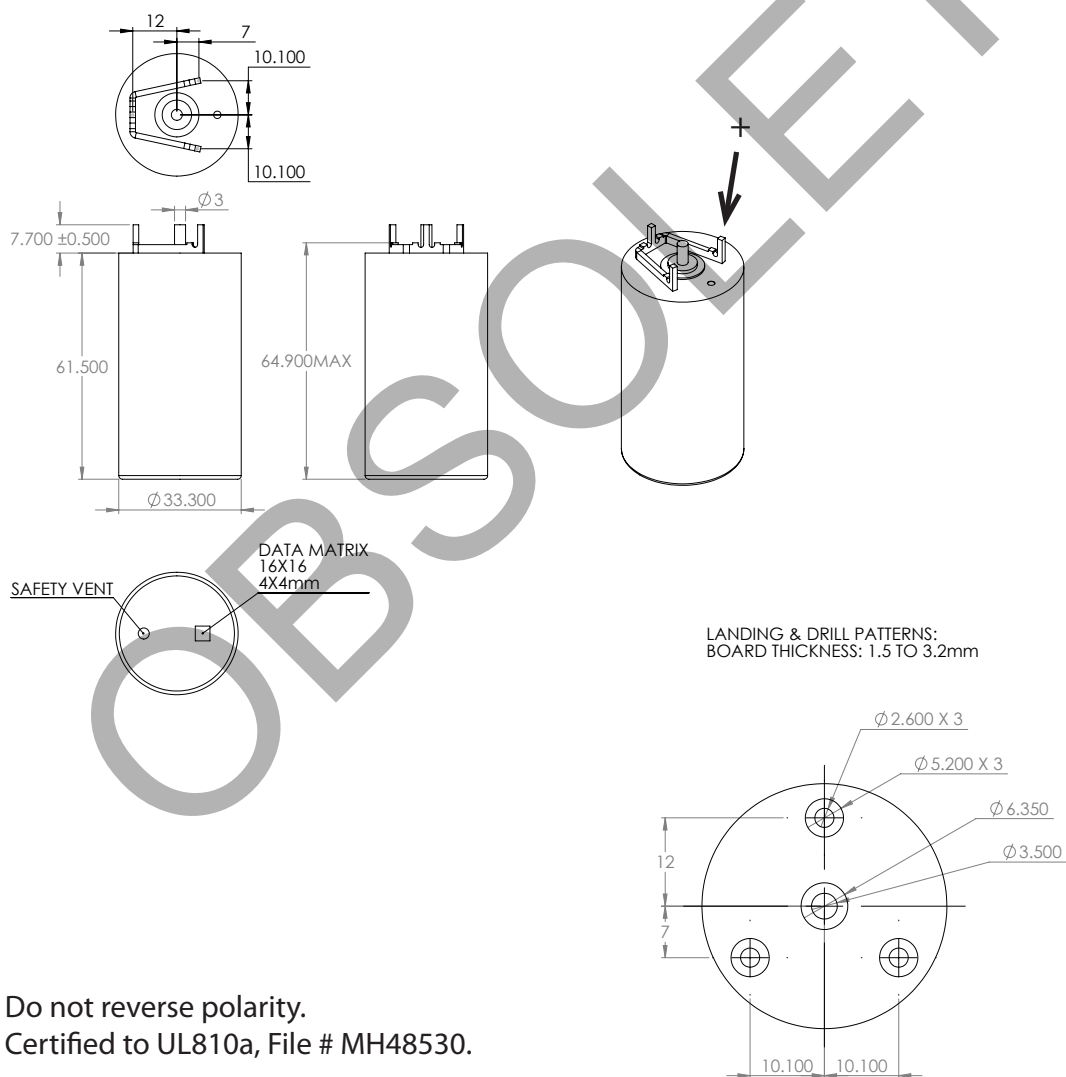
## Type CDLC Carboncap High-Power Board-Mount Ultracapacitor

### 4 Pin Radial Type

### Part Numbering System

| CDLC                               | 351                | E                | 2R7            | T11                |
|------------------------------------|--------------------|------------------|----------------|--------------------|
| Type                               | Capacitance<br>(F) | Tolerance<br>(%) | Voltage<br>(V) | Configuration      |
| CDLC - Carbon Double Layer<br>Cell | 351 = 350          | E = -0% / +20%   | 2R7 = 2.7      | T11 = 4 pin radial |

### Outline Drawing and Dimensions



Do not reverse polarity.  
Certified to UL810a, File # MH48530.