

Excellent Integrated System Limited

Stocking Distributor

Click to view price, real time Inventory, Delivery & Lifecycle Information:

[Harting](#)
[09020009902](#)

For any questions, you can email us directly:
sales@integrated-circuit.com

Alle Rechte vorbehalten/ All rights reserved

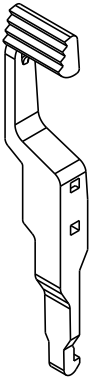
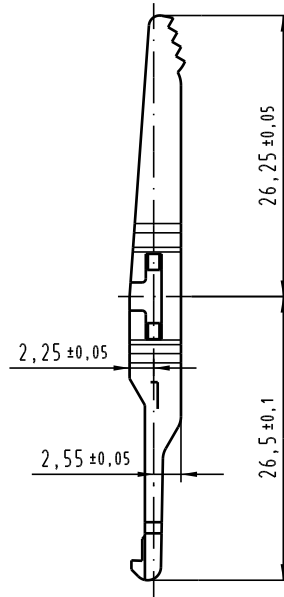
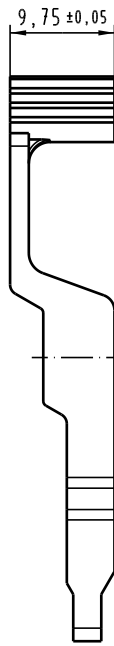
5


4

3

2

1



 All Dimensions in mm Original Size DIN A 4			Techn. Character.			Nicht tolerierte Maß/Free size tolerances	
				Dat.	Name	Maßstab/Scale	Rasthebel für Schalengehäuse C links <i>locking lever for shell housing C left</i>
	Detail.	13.07.04	Leh.	2:1			
	Insp.	13.07.04	kfoe				
	Stand.						
32054			HARTING Electronics GmbH & Co. KG		TB 09 02 000 9902		Blaß/ page
Mod.	Dat.	Name	D-32339 ESPELKAMP		Sub. 09 02 000 9902 Mod. 28699 v. 20.10.00		

