

Excellent Integrated System Limited

Stocking Distributor

Click to view price, real time Inventory, Delivery & Lifecycle Information:

[Harting](#)

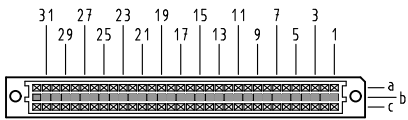
[09032966823](#)

For any questions, you can email us directly:

sales@integrated-circuit.com

Alle Rechte vorbehalten. All rights reserved

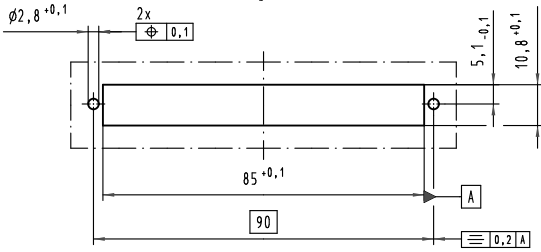
X
Kontaktanordnung
contact arrangement



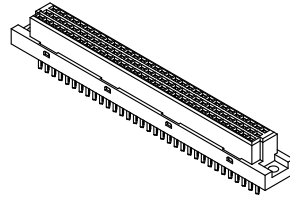
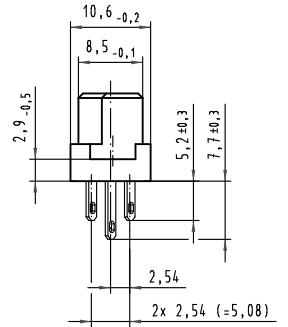
96 Signal Kontakte
96 signal contacts

- = Position belegt mit Lötöse 5,2 mm
= position with soldering-eye 5,2 mm
- = Position belegt mit Lötöse 7,7 mm
= position with soldering-eye 7,7 mm
- = Kontaktposition nicht belegt
= position without contact

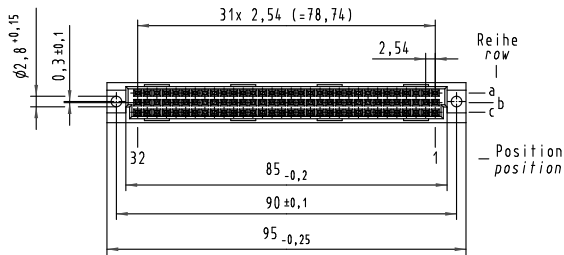
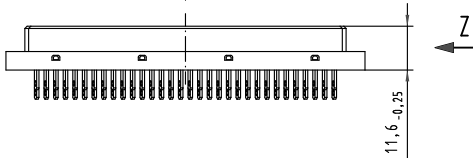
X
Montageausschnitt
mounting cutout



Z (2:1)



X



① weitere Informationen siehe: DS 09 03 210 00 02
further information see: DS 09 03 210 00 02

All Dimensions in mm Original Size DIN A 3		Techn. Character.		Nicht tolerierte Maß/Free size tolerances siehe / see IEC 60603-2	
		Det.	Name	Maßstab/Scale	
		Detail: 15.05.03 Hage.		1:1	
		Insp. 15.05.03 Sch.			
		Stand.			
36215	02.02.11	Hage.	HARTING Electronics GmbH & Co. KG		TB 09 03 296 x823
31433			D-32339 ESPELKAMP		
Mod.	Dat.	Name	Sub.		

09 03 296 6823	2
09 03 296 2823	1
Bestell-Nr. part-no.	Anforderungsstufe performance level
①	
Bauform C Federleiste, Lötöse 5,2/7,7, 96 pol. type C female connector, soldering-eye 5,2/7,7, 96 pol.	
Blatt/page	