

## Excellent Integrated System Limited

Stocking Distributor

Click to view price, real time Inventory, Delivery & Lifecycle Information:

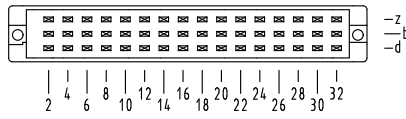
[Harting](#)

[09060482906](#)

For any questions, you can email us directly:

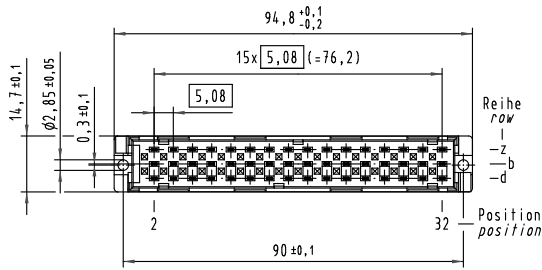
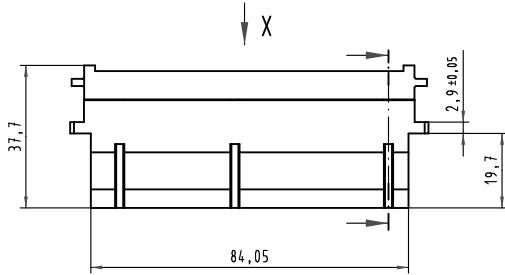
[sales@integrated-circuit.com](mailto:sales@integrated-circuit.com)

**X**  
**Kontaktanordnung**  
*contact arrangement*

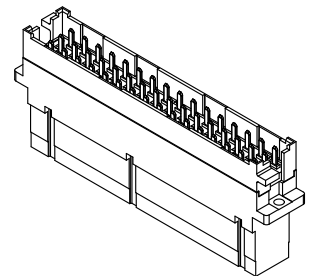
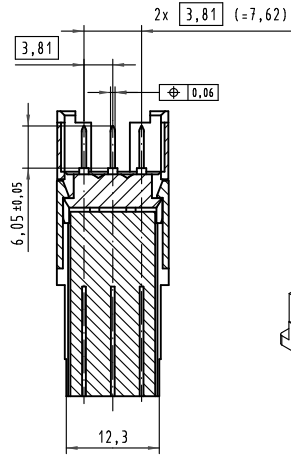


48 Messerkontakte  
48 male contacts

- ☒ = Kontaktposition belegt  
= position with contact
- ☐ = Kontaktposition nicht belegt  
= position without contact



2:1



	All Dimensions in mm Original Size DIN A 3		Techn. Character. IEC 60603-2		Nicht tolerierte Maß/Free size tolerances IEC 60603-2	
	Bel.	Name	Maßstab/Scale	<b>Übergangselement I</b> <b>mit Crimpschluss für Federkontakte</b> <i>interface connector I</i> <i>utilising female crimp contacts</i>		
Detail: 01.02.07	Hage.	1:1				
Insp. 01.02.07	mte	2:1				
Stand.				HARTING Electronics GmbH & Co. KG D-32339 ESPELKAMP		
34189						TB 09 06 048 2906 Blatt/page
Mod.	Dat.	Name		Sub.		

Alle Rechte vorbehalten. All rights reserved.