

Excellent Integrated System Limited

Stocking Distributor

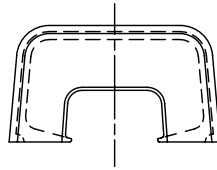
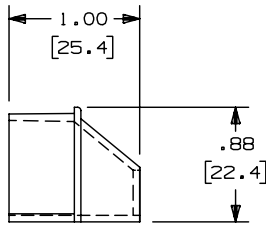
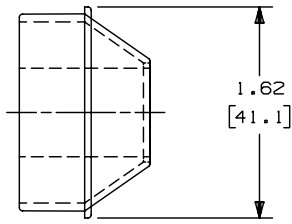
Click to view price, real time Inventory, Delivery & Lifecycle Information:

[Panduit](#)
[RF10X3EI-X](#)

For any questions, you can email us directly:

sales@integrated-circuit.com

THIS COPY IS PROVIDED ON A RESTRICTED BASIS AND IS NOT TO BE USED IN ANY WAY DETRIMENTAL TO THE INTERESTS OF PANDUIT CORP.



PANDUIT P/N	WEIGHT
RF10X3	.35 LB/ 100 PCS. 159g/ 100 PCS.

NOTES:

- SEE CURRENT CATALOG FOR ADDITIONAL PART SUFFIXES TO INDICATE COLOR AND OR PACKAGE QUANTITY.
- DIMENSIONS IN PARENTHESIS ARE IN METRIC.



CAD FILENAME/LAYERS D34019BG_DC_RF10X3_07C.PRT

							PANDUIT CORP. TINLEY PARK, ILLINOIS				
							REDUCER FITTING (RF10X3) CUSTOMER DRAWING				
3	07-08-02	JHNU	RMHI	C. REVISED MATERIAL IN DRAWING TITLE BLOCK	34019-16	RGRO	RGRO	UNLESS OTHERWISE SPECIFIED, DIMENSIONAL TOLERANCES ARE: (.X) ± (.XXX) ± (.XX) ±.03 (.8) ANGLES ±	UNLESS OTHERWISE SPECIFIED, ALL DIMENSIONS ARE GIVEN IN INCHES, THIRD ANGLE PROJECTION.		
2	08-28-00	JHNU	HIW	B. REVISED AND REDRAWN	34019-16	HIW	HIW				
1	11-24-87	LDS	WJB	A. ADDED PARTS RF10X3E1 AND RF10X3L1	34019-16	I	WJB	DRAWN BY RN	MAT'L: ABS	SCALE FULL	
R	06-11-88	RN	WJB	RELEASED TO PRODUCTION	34019-16	R	WJB	DATE 06-04-86		DRAWING NO. 34019-16	DWG SIZE A
REV	DATE	BY	CHK	DESCRIPTION	ECN	R	CUST	SUP		CHK'D WJB	