

Excellent Integrated System Limited

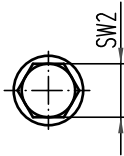
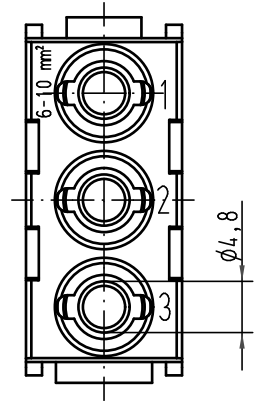
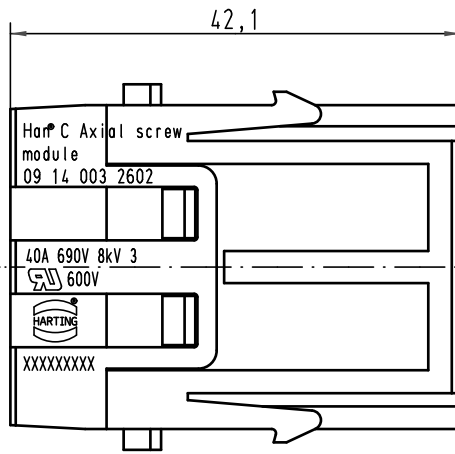
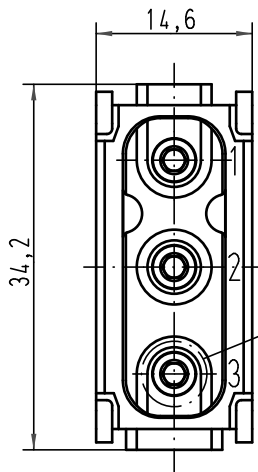
Stocking Distributor

Click to view price, real time Inventory, Delivery & Lifecycle Information:

[Harting](#)
[09140032602](#)

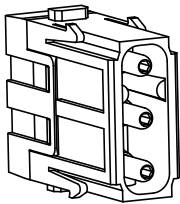
For any questions, you can email us directly:
sales@integrated-circuit.com

Alle Rechte vorbehalten/ All rights reserved



X
5:1

für Litze 6 - 10mm², AWG 10 - 8, feindrähtig
for stranded wire 6 - 10mm², AWG 10 - 8, fine wire



All Dimensions in mm Original Size DIN A 4			Techn. Character.			Nicht tolerierte Maß/Free size tolerances		
			Detail.	10.10.08	Rull	Maßstab/Scale 2:1	Han C Axial screw module Stifteinsatz/male insert	
			Insp.		Be			
			Stand.					
A			HARTING Electric GmbH & Co. KG				TB 09 14 003 2602	
Mod.	Dat.	Name	D-32339 Espelkamp				Sub. TB 09 14 003 2602 v. 02.03.04	Blatt/page