

Excellent Integrated System Limited

Stocking Distributor

Click to view price, real time Inventory, Delivery & Lifecycle Information:

[Harting](#)
[09150006171](#)

For any questions, you can email us directly:
sales@integrated-circuit.com

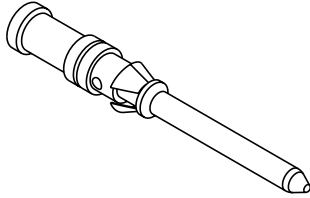
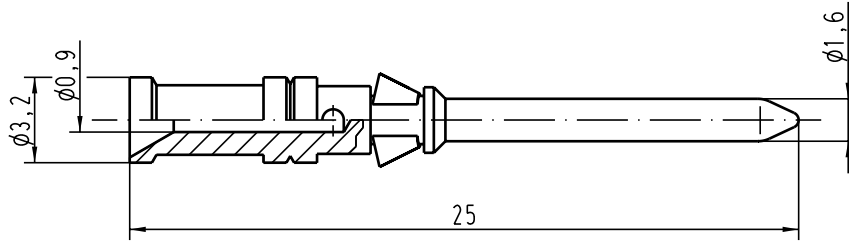
5

4



3

2

1



Leiterquerschnitt/wire gauge: 0,14-0,37mm²/ AWG 26-22

 All Dimensions in mm Original Size DIN A 4			Techn. Character.			Nicht tolerierte Masse/ free size tolerances		
				Dat.	Name	Massestab/Scale 5:1	R15-Kontaktstift Crimpkontakt (Fe) vergoldet/ crimp contact (Fe) gold plated	
			Detail.	24.09.03	Loe.			
			Insp.		KR			
			Stand.					
410702			HARTING Electric GmbH & Co. KG				TB 09 15 000 6171	
Mod.	Dat.	Name	D-32339 Espelkamp				Sub.	Blatt/ page