

## **Excellent Integrated System Limited**

Stocking Distributor

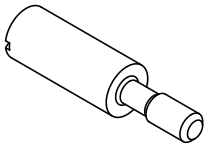
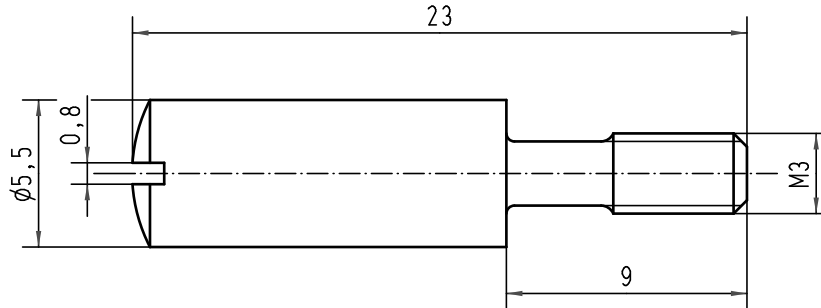
Click to view price, real time Inventory, Delivery & Lifecycle Information:



[Harting](#)

[09300009901](#)

For any questions, you can email us directly:

[sales@integrated-circuit.com](mailto:sales@integrated-circuit.com)



 All Dimensions in mm Original Size DIN A 4			Techn. Character.			Nicht tolerierte Maß/Free size tolerances		
						Maßstab/Scale <b>5:1</b>	<b>Sperrbolzen</b> code pin	
			Detail.	12.01.93	PENNER			
			Insp.		HERB.			
			Stand.					
413164	30.08.07	ML	HARTING Electric GmbH & Co. KG				<b>TB 09 30 000 9901</b>	Blatt/ page 1/2
25892	06.05.99	Gü	D-32339 Espelkamp					
Mod.	Dat.	Name				Sub. TB 09 30 000 9901 v. 08.03.79		