

## Excellent Integrated System Limited

Stocking Distributor

Click to view price, real time Inventory, Delivery & Lifecycle Information:

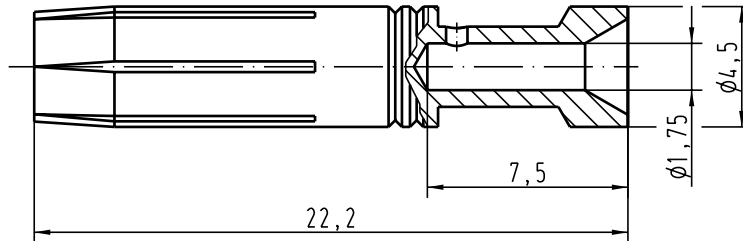
[Harting](#)

[09330006404](#)

For any questions, you can email us directly:



[sales@integrated-circuit.com](mailto:sales@integrated-circuit.com)

Alle Rechte vorbehalten/ All rights reserved



Leiterquerschnitt/ wire gauge : 1,5mm<sup>2</sup> /AWG16

Oberfläche/ surface : Gold Tec (NiP+Au)

 All Dimensions in mm Original Size DIN A 4			Techn. Character.			Nicht tolerierte Masse/ free size tolerances																
				<table border="1"> <tr> <th>Detail.</th> <th>Dat.</th> <th>Name</th> </tr> <tr> <td></td> <td>14.05.04</td> <td>Ste</td> </tr> <tr> <td>Insp.</td> <td></td> <td>KR</td> </tr> <tr> <td>Stand.</td> <td></td> <td></td> </tr> </table>	Detail.	Dat.	Name		14.05.04	Ste	Insp.		KR	Stand.			<table border="1"> <tr> <th>Masstab/ Scale</th> </tr> <tr> <td>5:1</td> </tr> </table>	Masstab/ Scale	5:1	<b>Han E-Kontaktbuchse</b> Han E-female contact		
Detail.	Dat.	Name																				
	14.05.04	Ste																				
Insp.		KR																				
Stand.																						
Masstab/ Scale																						
5:1																						
411022			HARTING Electric GmbH & Co. KG D-32339 Espelkamp		<b>TB 09 33 000 6404</b>	Blatt/ page Sub.																
Mod.	Dat.	Name																				