

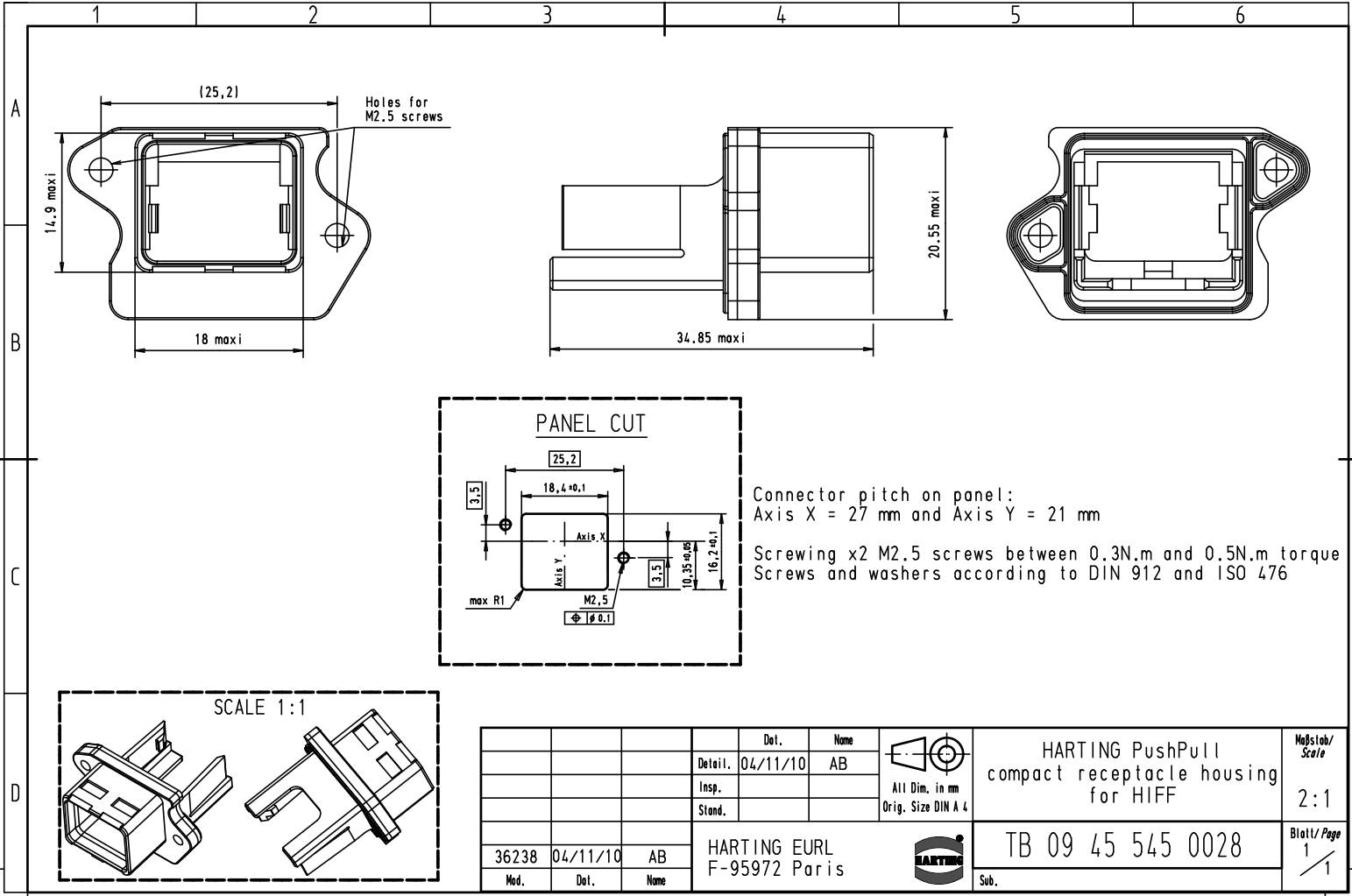
## Excellent Integrated System Limited

Stocking Distributor



Click to view price, real time Inventory, Delivery & Lifecycle Information:

[Harting](#)  
[09455450028](#)

For any questions, you can email us directly:  
[sales@integrated-circuit.com](mailto:sales@integrated-circuit.com)



Connector pitch on panel:  
 Axis X = 27 mm and Axis Y = 21 mm  
 Screwing x2 M2.5 screws between 0.3N.m and 0.5N.m torque  
 Screws and washers according to DIN 912 and ISO 476

|       |          |         |                               |      |   |  |                          |
|-------|----------|---------|-------------------------------|------|---|--|--------------------------|
|       |          |         | Det.                          | Name | <br>All Dim. in mm<br>Orig. Size DIN A 4 | HARTING PushPull<br>compact receptacle housing<br>for HIFF | Maßstab/<br>Scale<br>2:1 |
|       |          | Detail. | 04/11/10                      | AB   |   |  |                          |
|       |          | Insp.   |                               |      |   |  |                          |
|       |          |         | Stand.                        |      |   |  |                          |
| 36238 | 04/11/10 | AB      | HARTING EURL<br>F-95972 Paris |      |    | TB 09 45 545 0028  | Blatt/ Page<br>1 / 1     |
| Mod.  | Det.     | Name    |                               |      |   | Sub.   |                          |