

## Excellent Integrated System Limited

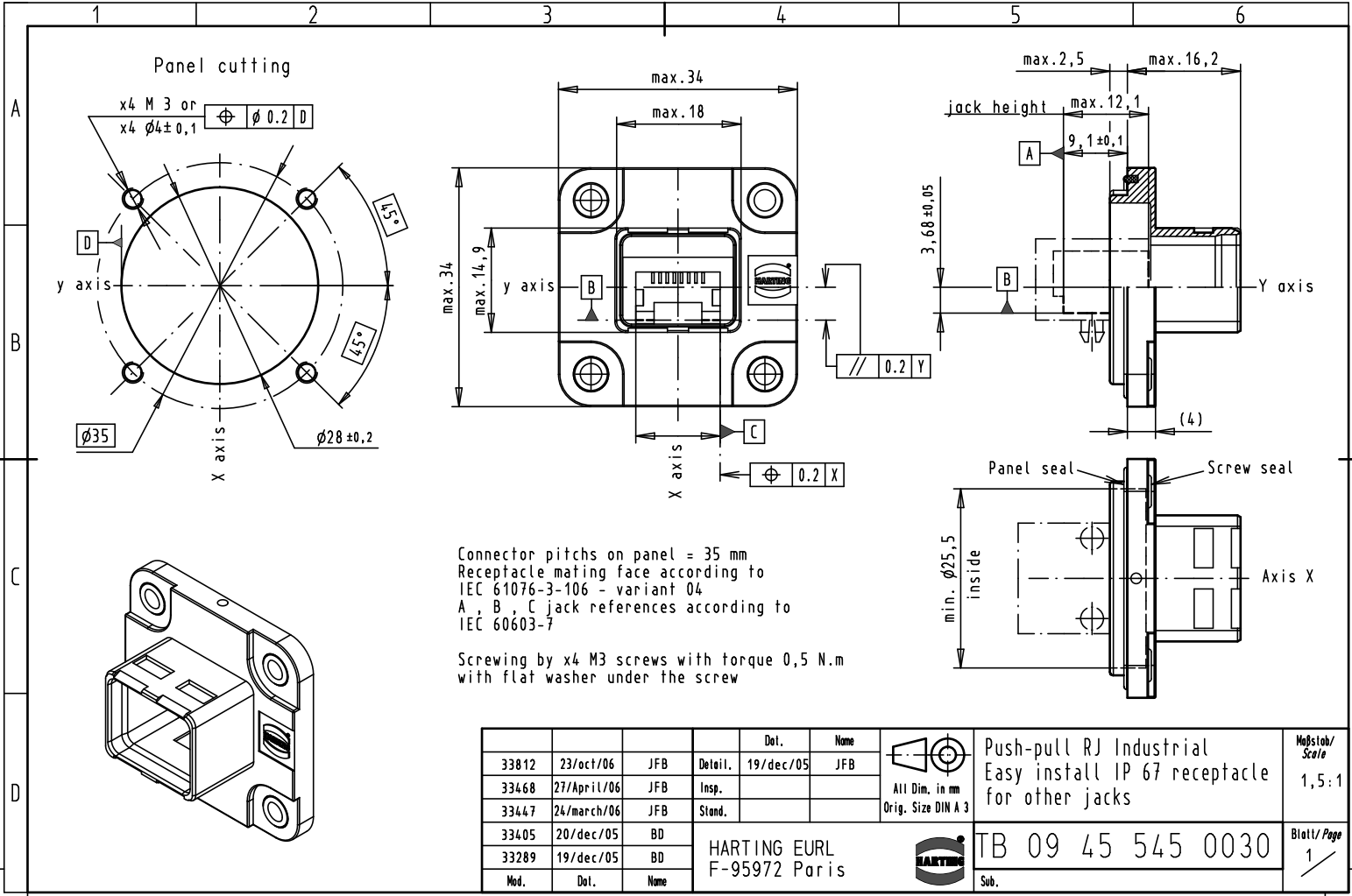
Stocking Distributor

Click to view price, real time Inventory, Delivery & Lifecycle Information:

[Harting](#)  
[09455450030](#)

For any questions, you can email us directly:  
[sales@integrated-circuit.com](mailto:sales@integrated-circuit.com)

Alle Rechte vorbehalten/ All rights reserved



Connector pitches on panel = 35 mm  
 Receptacle mating face according to IEC 61076-3-106 - variant 04  
 A, B, C jack references according to IEC 60603-7

Screwing by x4 M3 screws with torque 0,5 N.m with flat washer under the screw

Mod.	Dat.	Name	HARTING		TB 09 45 545 0030		Blatt/ Page
33812	23/oct/06	JFB	Detail.	19/dec/05	JFB	Push-pull RJ Industrial Easy install IP 67 receptacle for other jacks	1/1
33468	27/April/06	JFB	Insp.				
33447	24/march/06	JFB	Stand.				
33405	20/dec/05	BD	HARTING EURL				
33289	19/dec/05	BD	F-95972 Paris				
Mod.	Dat.	Name				Sub.	



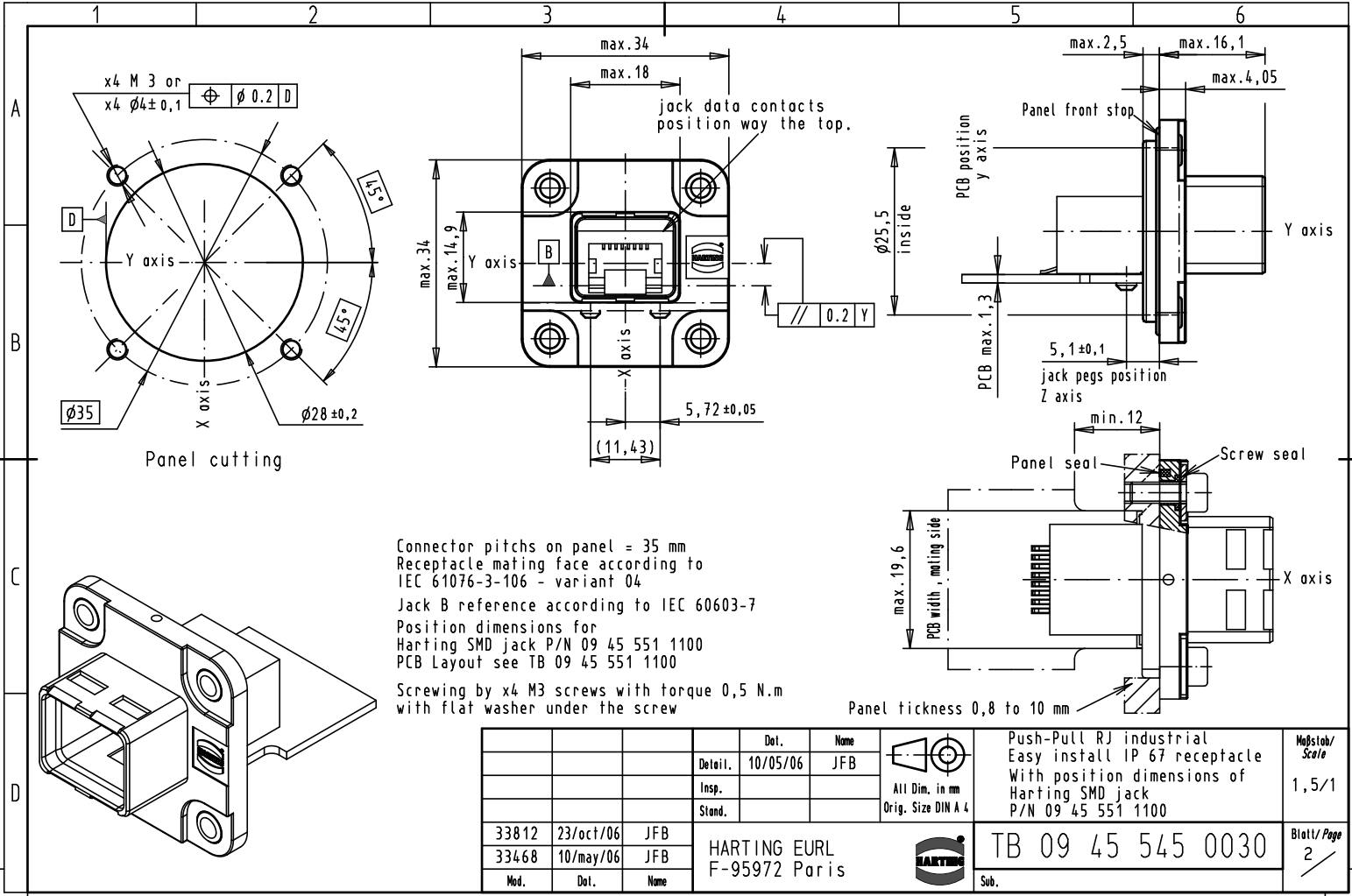
All Dim. in mm  
 Orig. Size DIN A 3



Meßstab/  
 Scale  
 1,5:1

Blatt/ Page  
 1/1

Alle Rechte vorbehalten/ All rights reserved

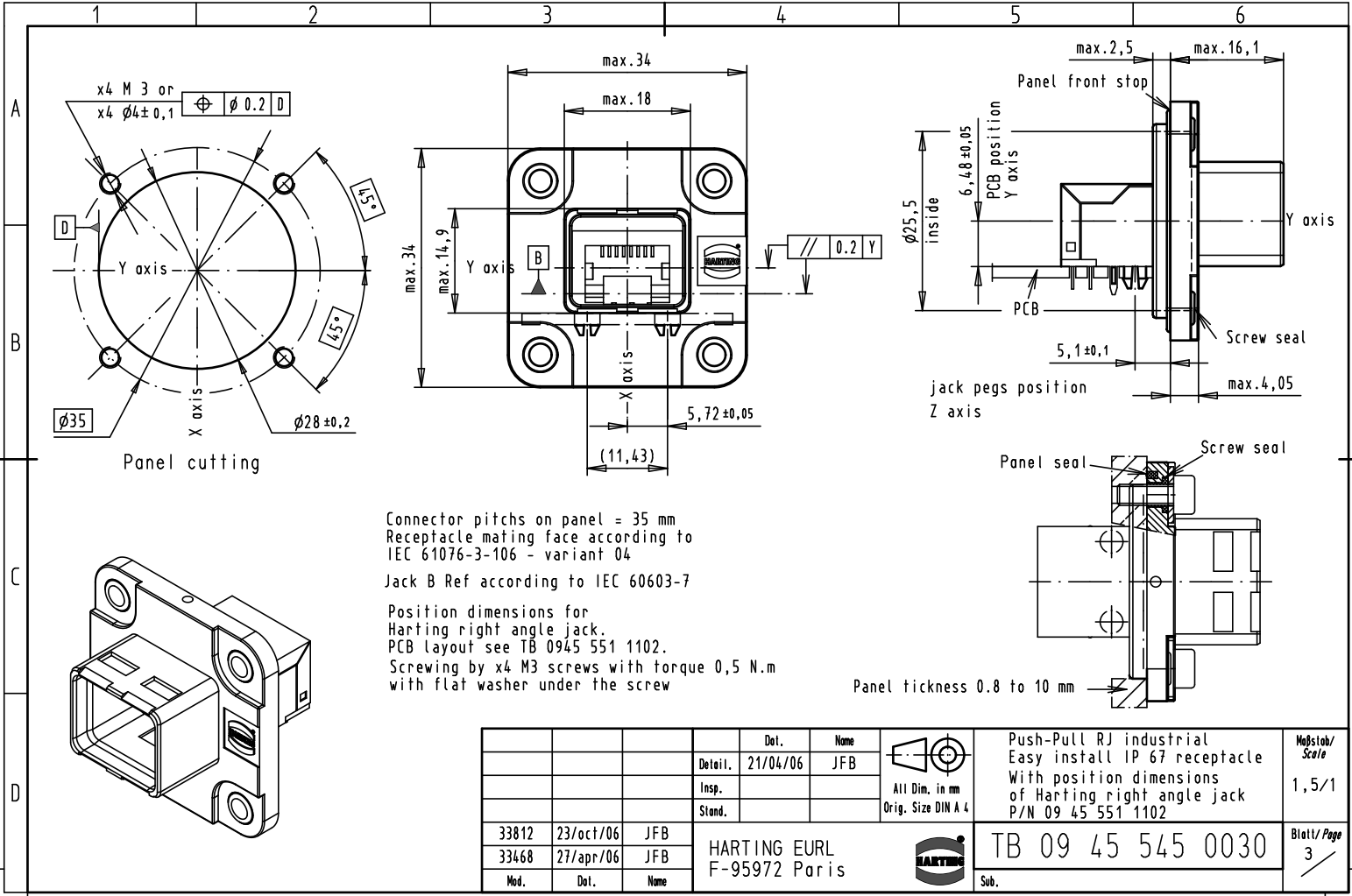


Connector pitches on panel = 35 mm  
 Receptacle mating face according to IEC 61076-3-106 - variant 04  
 Jack B reference according to IEC 60603-7  
 Position dimensions for Harting SMD jack P/N 09 45 551 1100  
 PCB Layout see TB 09 45 551 1100  
 Screwing by x4 M3 screws with torque 0,5 N.m with flat washer under the screw

Panel tickness 0,8 to 10 mm

			Det.	Name	 All Dim. in mm Orig. Size DIN A 4	Push-Pull RJ industrial Easy install IP 67 receptacle With position dimensions of Harting SMD jack P/N 09 45 551 1100	Meßstab/ Scale	
			Detail.	10/05/06			JFB	1,5/1
			Insp.					
			Stand.					
33812	23/oct/06	JFB	HARTING EURL			 F-95972 Paris	TB 09 45 545 0030	Blatt/ Page 2
33468	10/may/06	JFB	Mod.	Det.	Name			

Alle Rechte vorbehalten/ All rights reserved

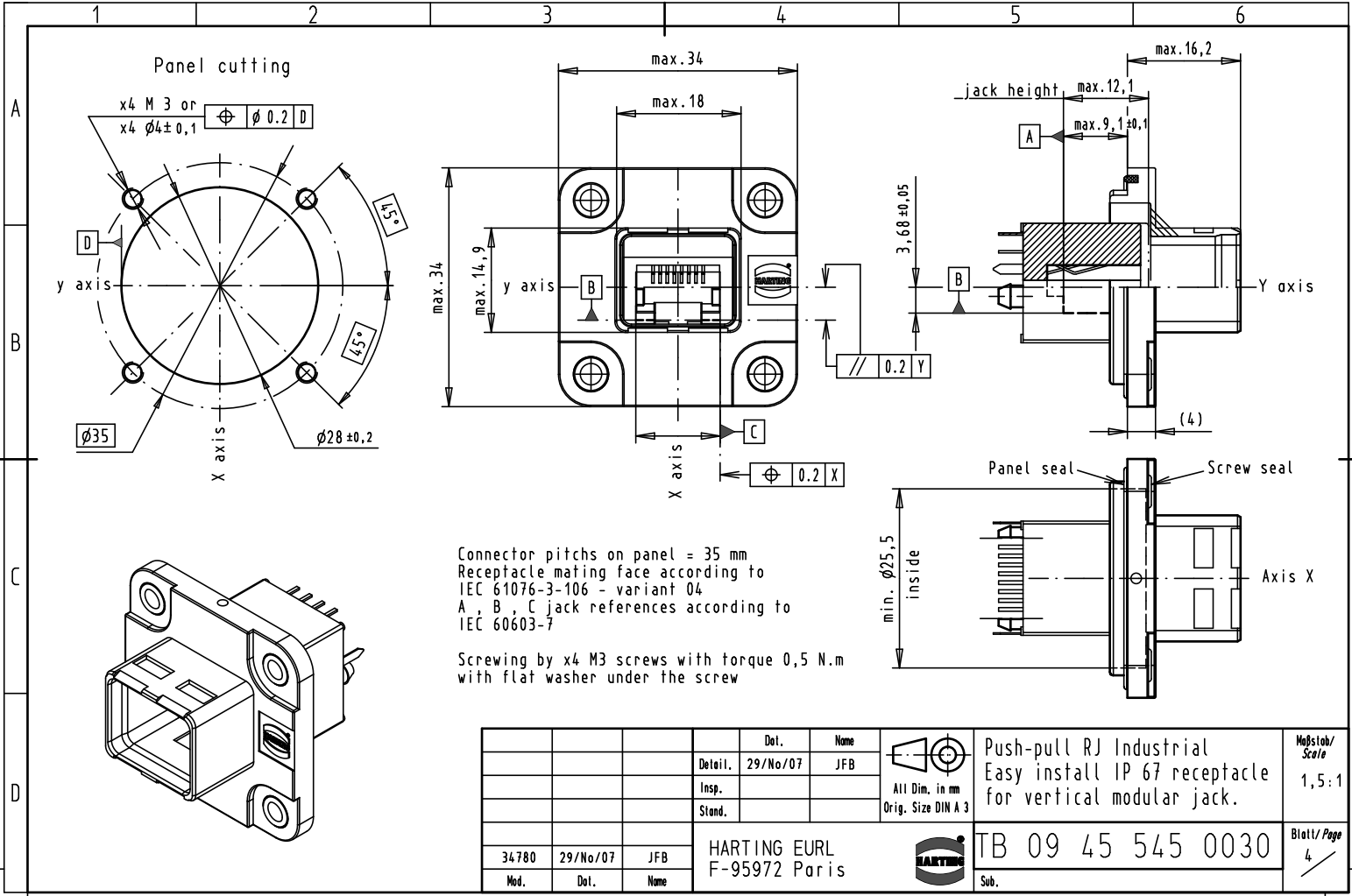


Connector pitches on panel = 35 mm  
 Receptacle mating face according to IEC 61076-3-106 - variant 04  
 Jack B Ref according to IEC 60603-7  
 Position dimensions for Harting right angle jack.  
 PCB layout see TB 0945 551 1102.  
 Screwing by x4 M3 screws with torque 0,5 N.m with flat washer under the screw

Panel tickness 0.8 to 10 mm



				Det.	Name	 All Dim. in mm Orig. Size DIN A 4	Push-Pull RJ industrial Easy install IP 67 receptacle With position dimensions of Harting right angle jack P/N 09 45 551 1102	Meßstab/ Scale	
			Detail.	21/04/06	JFB			1,5/1	
			Insp.						
			Stand.						
33812	23/oct/06	JFB	HARTING EURL F-95972 Paris					TB 09 45 545 0030	Blatt/ Page 3 /
33468	27/apr/06	JFB							
Mod.	Det.	Name							

Alle Rechte vorbehalten/ All rights reserved



Connector pitches on panel = 35 mm  
 Receptacle mating face according to IEC 61076-3-106 - variant 04  
 A, B, C jack references according to IEC 60603-7

Screwing by x4 M3 screws with torque 0,5 N.m with flat washer under the screw

			Detl.	Name	 All Dim. in mm Orig. Size DIN A 3	Push-pull RJ Industrial Easy install IP 67 receptacle for vertical modular jack.	Maßstab/ Scale 1,5:1	
			Detail.	29/No/07				JFB
			Insp.					
			Stand.					
34780	29/No/07	JFB	HARTING EURL F-95972 Paris				TB 09 45 545 0030	Blatt/ Page 4
Mod.	Detl.	Name					Sub.	