

Excellent Integrated System Limited

Stocking Distributor

Click to view price, real time Inventory, Delivery & Lifecycle Information:

[Harting](#)

[09990000623](#)

For any questions, you can email us directly:

sales@integrated-circuit.com

Alle Rechte vorbehalten/ All rights reserved

5

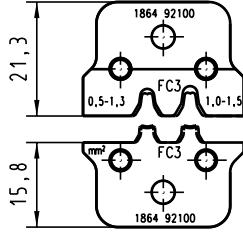
4

3

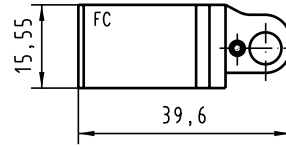
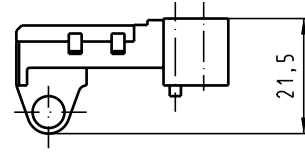
2

1

Crimpeinsätze
Crimp dies



Positionierer FC 09 99 000 0631 im Set enthalten
Locator FC 09 99 000 0631 scope of delivery



Anwendungsbereich: FC3 Kontakte


Application range: FC3 contacts

Leiterquerschnitt: Profil 1: 0,5-1,3 mm²

wire gauge: Profil 2: 1,0-1,5 mm²

für Crimpkontakte:
for crimp contacts:

09 06 000 9572	Messer / male	2	0,5-1,5	20-16	1,6-2,8
09 06 000 9552	Messer / male	1	0,5-1,5	20-16	1,6-2,8
09 06 000 8482	Feder / female	2	0,5-1,5	20-16	1,6-2,8
09 06 000 8472	Feder / female	1	0,5-1,5	20-16	1,6-2,8
09 06 000 6462	Feder / female	Sn	0,5-1,5	20-16	1,6-2,8
Kontakt Nr. contact no.	Messer / Feder male / female	AFS PL	Leiterquerschnitt wire gauge	AWG AWG	Isolationsø Insulationø

All Dimensions in mm Original Size DIN A 4		Techn. Character.			Nicht tolerierte Maß Free size tolerances	
		Dat.	Name	Maßstab/Scale		
		Detail:	16.10.02 Hage.	1:1		
		Insp.	16.10.02 Wae.			
		Stand.				
31239		HARTING Electronics GmbH & Co. KG			TB 09 99 000 0623	
Mod. Dat. Name		D-32339 ESPELKAMP				
					Blatt/ page	

Crimp-Set FC3
für Zange 09 99 000 0620.00
for tool 09 99 000 0620.00

TB 09 99 000 0623

Sub.