

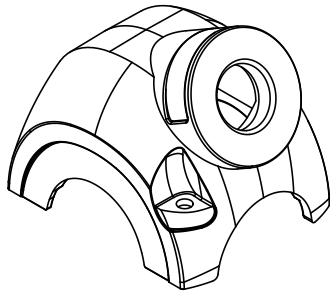
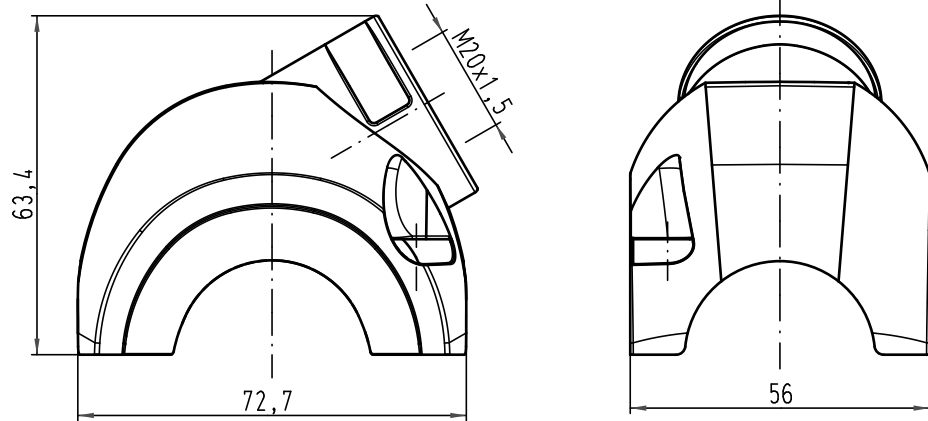
## Excellent Integrated System Limited

Stocking Distributor

Click to view price, real time Inventory, Delivery & Lifecycle Information:

[Harting](#)  
[11123001500](#)

For any questions, you can email us directly:  
[sales@integrated-circuit.com](mailto:sales@integrated-circuit.com)



Lieferumfang: Haube mit M4 Schrauben, Scheiben und Dichtungen zur Befestigung am Trägergehäuse /  
*range of delivery: shell with M4 screws, washers and seals to mount on carrier hood*

All Dimensions in mm Original Size DIN A 4			Techn. Character.			Nicht tolerierte Maß/Free size tolerances	
						<b>1:1</b>	<b>Han-Yellock 30- Haube-M20 seitlich/ shell-M20 side entry</b>
			Detail.	30.04.10	Ho		
			Insp.		SP		
			Stand.				
A			HARTING Electric GmbH & Co. KG				<b>TB 11 12 300 1500</b>
Mod.	Dat.	Name	D-32339 Espelkamp				
							Blatt/ page