

Excellent Integrated System Limited

Stocking Distributor

Click to view price, real time Inventory, Delivery & Lifecycle Information:

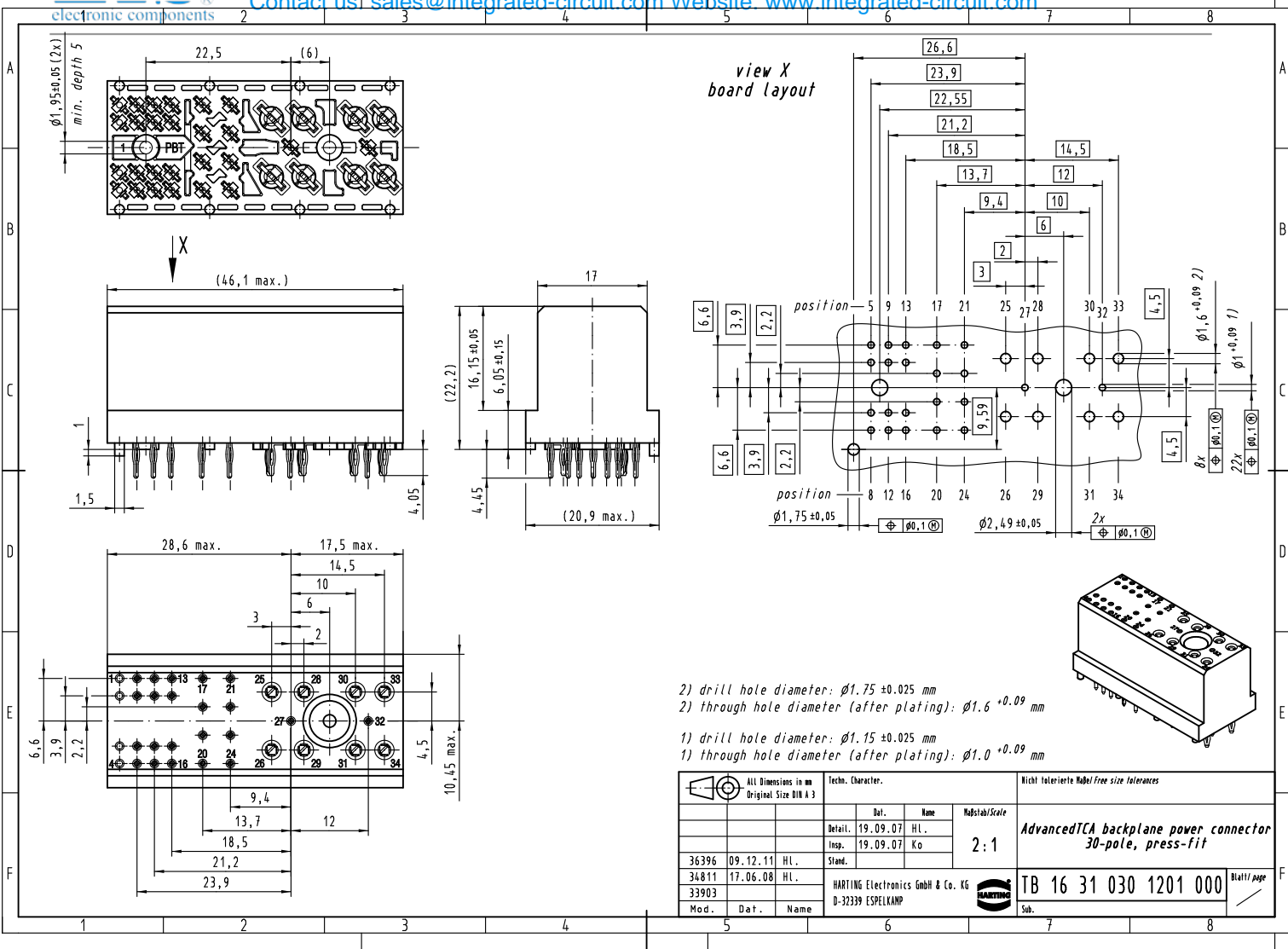
[Harting](#)

[16310301201000](#)

For any questions, you can email us directly:

sales@integrated-circuit.com

Alle Rechte vorbehalten. All rights reserved



- 2) drill hole diameter: $\phi 1.75 \pm 0.025$ mm
- 2) through hole diameter (after plating): $\phi 1.6 \pm 0.09$ mm
- 1) drill hole diameter: $\phi 1.15 \pm 0.025$ mm
- 1) through hole diameter (after plating): $\phi 1.0 \pm 0.09$ mm

	Techn. Character.				Nicht tolerierte Maß/Free size tolerances		
	Bel.	Name	Maßstab/Scale		AdvancedTCA backplane power connector 30-pole, press-fit		
	Detail: 19.09.07	HL.	2:1				
36396	09.12.11	HL.	Stand.	HARTING Electronics GmbH & Co. KG D-32339 ESPELKAMP		TB 16 31 030 1201 000	Blatt/page Sub.
34811	17.06.08	HL.					
33903							
Mod.	Dat.	Name					