

Excellent Integrated System Limited

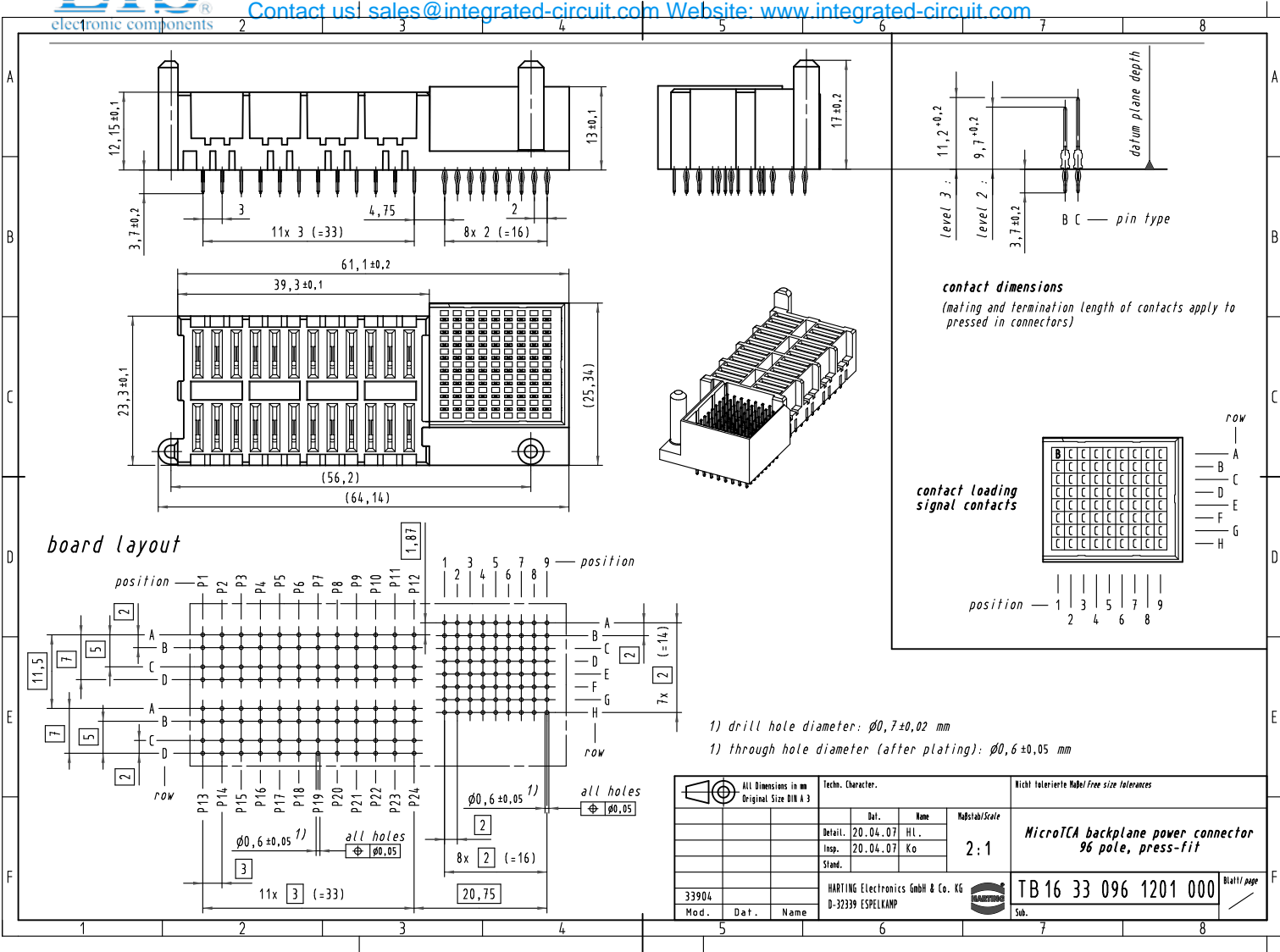
Stocking Distributor

Click to view price, real time Inventory, Delivery & Lifecycle Information:

[Harting](#)
[16330961201000](#)

For any questions, you can email us directly:
sales@integrated-circuit.com

Alle Rechte vorbehalten. All rights reserved.



contact dimensions
 (mating and termination length of contacts apply to pressed in connectors)

contact loading signal contacts

- 1) drill hole diameter: $\varnothing 0,7 \pm 0,02$ mm
- 1) through hole diameter (after plating): $\varnothing 0,6 \pm 0,05$ mm

	All Dimensions in mm Original Size DIN A 3		Techn. Character.		Nicht tolerierte Maß/Free size tolerances	
	Def.	Name	Maßstab/Scale	MicroTCA backplane power connector 96 pole, press-fit		
Detail: 20.04.07	HL.	2:1				
Insp. 20.04.07	Ko					
Stand.				TB 16 33 096 1201 000		
HARTING Electronics GmbH & Co. KG D-32339 ESPELKAMP						
33904				TB 16 33 096 1201 000		
Mod.	Dat.	Name		Sub.		