

## Excellent Integrated System Limited

Stocking Distributor

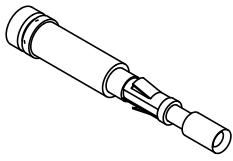
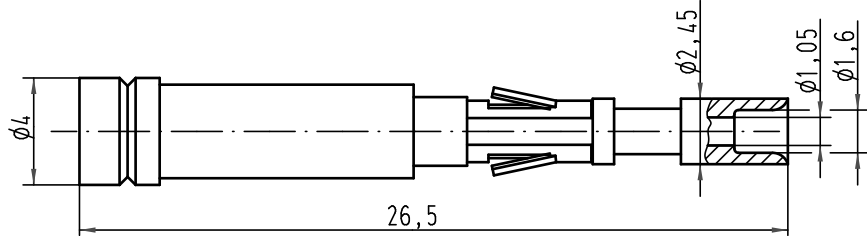
Click to view price, real time Inventory, Delivery & Lifecycle Information:



[Harting](#)  
[20100013222](#)

For any questions, you can email us directly:  
[sales@integrated-circuit.com](mailto:sales@integrated-circuit.com)

für Kontakteinsatz:  
for insert:

- Han 7 D
- Han 8 D
- Han 15 D
- Han 25 D
- Han 40 D
- Han 50 D
- Han 64 D
- Han 80 D
- Han 128 D



 All Dimensions in mm Original Size DIN A 4			Techn. Character.			Nicht tolerierte Maß/Free size tolerances																
				<table border="1"> <tr> <th>Detail.</th> <th>Dat.</th> <th>Name</th> </tr> <tr> <td></td> <td>09.03.01</td> <td>DY</td> </tr> <tr> <th>Insp.</th> <td></td> <td>SDT</td> </tr> <tr> <th>Stand.</th> <td></td> <td></td> </tr> </table>	Detail.	Dat.	Name		09.03.01	DY	Insp.		SDT	Stand.			<table border="1"> <tr> <th>Maßstab/Scale</th> </tr> <tr> <td>5:1</td> </tr> </table>	Maßstab/Scale	5:1	<b>LWL-Kontaktbuchse/ FOC Female contact</b> für 1mm Kunststoff Faser for 1mm plastic fibre		
Detail.	Dat.	Name																				
	09.03.01	DY																				
Insp.		SDT																				
Stand.																						
Maßstab/Scale																						
5:1																						
414062	11.08.08	Rull																				
413262	10.10.07	Ho	HARTING Electric GmbH & Co. KG D-32339 Espelkamp			<b>TB 20 10 001 3222</b>																
29295						Blatt/ page Sub.																
Mod.	Dat.	Name																				