



Excellent Integrated System Limited

Stocking Distributor

Click to view price, real time Inventory, Delivery & Lifecycle Information:

[Molex Connector Corporation](#)

[0192670219](#)

For any questions, you can email us directly:

sales@integrated-circuit.com



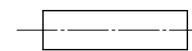
Distributor of Molex Connector Corporation: Excellent Integrated System Limited

Datasheet of 0192670219 - 3/8 INCH HST BLK SMLL 100' SPOOL

Contact us: sales@integrated-circuit.com Website: www.integrated-circuit.com

BLACK		WHITE		RED		BLUE		CLEAR		YELLOW		MIN	MAX	RECOVERED	LENGTH
MATERIAL NUMBER	ENGINEERING NUMBER	MATERIAL NUMBER	ENGINEERING NUMBER	MATERIAL NUMBER	ENGINEERING NUMBER	MATERIAL NUMBER	ENGINEERING NUMBER	MATERIAL NUMBER	ENGINEERING NUMBER	MATERIAL NUMBER	ENGINEERING NUMBER	EXPANDED ID 'D'	RECOVERED ID	WALL THK REF	FEET/METERS
192670015	PF-3/64-1BK	192670016	PF-3/64-1WT	192670017	PF-3/64-1RD	192670018	PF-3/64-1BL	192670019	PF-3/64-1CL	192670020	PF-3/64-1YL	.046/1.17	.023/0.58	.018/0.46	4.0/1.2
192670045	PF-1/16-1BK	192670046	PF-1/16-1WT	192670047	PF-1/16-1RD	192670048	PF-1/16-1BL	192670049	PF-1/16-1CL	192670050	PF-1/16-1YL	.063/1.60	.031/0.79	.018/0.46	
192670075	PF-3/32-1BK	192670076	PF-3/32-1WT	192670077	PF-3/32-1RD	192670078	PF-3/32-1BL	192670079	PF-3/32-1CL	192670080	PF-3/32-1YL	.093/2.36	.046/1.17	.020/0.51	
192670105	PF-1/8-1BK	192670106	PF-1/8-1WT	192670107	PF-1/8-1RD	192670108	PF-1/8-1BL	192670109	PF-1/8-1CL	192670110	PF-1/8-1YL	.125/3.18	.062/1.57	.020/0.51	
192670135	PF-3/16-1BK	192670136	PF-3/16-1WT	192670137	PF-3/16-1RD	192670138	PF-3/16-1BL	192670139	PF-3/16-1CL	192670140	PF-3/16-1YL	.187/4.75	.093/2.36	.020/0.51	
192670165	PF-1/4-1BK	192670166	PF-1/4-1WT	192670167	PF-1/4-1RD	192670168	PF-1/4-1BL	192670169	PF-1/4-1CL	192670170	PF-1/4-1YL	.250/6.35	.125/3.18	.025/0.64	
192670195	PF-3/8-1BK	192670196	PF-3/8-1WT	192670197	PF-3/8-1RD	192670198	PF-3/8-1BL	192670199	PF-3/8-1CL	192670200	PF-3/8-1YL	.375/9.53	.187/4.75	.025/0.64	
192670225	PF-1/2-1BK	192670226	PF-1/2-1WT	192670227	PF-1/2-1RD	192670228	PF-1/2-1BL	192670229	PF-1/2-1CL	192670230	PF-1/2-1YL	.500/12.70	.250/6.35	.025/0.64	
192670255	PF-3/4-1BK	192670256	PF-3/4-1WT	192670257	PF-3/4-1RD	192670258	PF-3/4-1BL	192670259	PF-3/4-1CL	192670260	PF-3/4-1YL	.750/19.05	.375/9.53	.030/0.76	
192670285	PF-1-1BK	192670286	PF-1-1WT	192670287	PF-1-1RD	192670288	PF-1-1BL	192670289	PF-1-1CL	192670290	PF-1-1YL	1.000/25.40	.500/12.70	.035/0.89	
192670315	PF-1-1/2-1BK	192670316	PF-1-1/2-1WT	192670317	PF-1-1/2-1RD	192670318	PF-1-1/2-1BL	192670319	PF-1-1/2-1CL	192670320	PF-1-1/2-1YL	1.500/38.10	.750/19.05	.040/1.02	
192670345	PF-2-1BK	192670346	PF-2-1WT	192670347	PF-2-1RD	192670348	PF-2-1BL	192670349	PF-2-1CL	192670350	PF-2-1YL	2.000/50.80	1.000/25.40	.045/1.14	
192670375	PF-3-1BK	192670376	PF-3-1WT	192670377	PF-3-1RD	192670378	PF-3-1BL	192670379	PF-3-1CL	192670380	PF-3-1YL	3.000/76.20	1.500/38.10	.050/1.27	
192670405	PF-4-1BK							192670409	PF-3-1CL			4.000/101.60	2.000/50.80	.055/1.40	
192670033	PF-3/64-4BK	192670034	PF-3/64-4WT	192670035	PF-3/64-4RD	192670036	PF-3/64-4BL	192670037	PF-3/64-4CL	192670038	PF-3/64-4YL	.046/1.17	.023/0.58	.018/0.46	
192670063	PF-1/16-4BK	192670064	PF-1/16-4WT	192670065	PF-1/16-4RD	192670066	PF-1/16-4BL	192670067	PF-1/16-4CL	192670068	PF-1/16-4YL	.063/1.60	.031/0.79	.018/0.46	
192670093	PF-3/32-4BK	192670094	PF-3/32-4WT	192670095	PF-3/32-4RD	192670096	PF-3/32-4BL	192670097	PF-3/32-4CL	192670098	PF-3/32-4YL	.093/2.36	.046/1.17	.020/0.51	
192670123	PF-1/8-4BK	192670124	PF-1/8-4WT	192670125	PF-1/8-4RD	192670126	PF-1/8-4BL	192670127	PF-1/8-4CL	192670128	PF-1/8-4YL	.125/3.18	.062/1.57	.020/0.51	
192670153	PF-3/16-4BK	192670154	PF-3/16-4WT	192670155	PF-3/16-4RD	192670156	PF-3/16-4BL	192670157	PF-3/16-4CL	192670158	PF-3/16-4YL	.187/4.75	.093/2.36	.020/0.51	
192670183	PF-1/4-4BK	192670184	PF-1/4-4WT	192670185	PF-1/4-4RD	192670186	PF-1/4-4BL	192670187	PF-1/4-4CL	192670188	PF-1/4-4YL	.250/6.35	.125/3.18	.025/0.64	
192670213	PF-3/8-4BK	192670214	PF-3/8-4WT	192670215	PF-3/8-4RD	192670216	PF-3/8-4BL	192670217	PF-3/8-4CL	192670218	PF-3/8-4YL	.375/9.53	.187/4.75	.025/0.64	
192670243	PF-1/2-4BK	192670244	PF-1/2-4WT	192670245	PF-1/2-4RD	192670246	PF-1/2-4BL	192670247	PF-1/2-4CL	192670248	PF-1/2-4YL	.500/12.70	.250/6.35	.025/0.64	
192670273	PF-3/4-4BK	192670274	PF-3/4-4WT	192670275	PF-3/4-4RD	192670276	PF-3/4-4BL	192670277	PF-3/4-4CL	192670278	PF-3/4-4YL	.750/19.05	.375/9.53	.030/0.76	
192670303	PF-1-4BK	192670304	PF-1-4WT	192670305	PF-1-4RD	192670306	PF-1-4BL	192670307	PF-1-4CL	192670308	PF-1-4YL	1.000/25.40	.500/12.70	.035/0.89	
192670333	PF-1-1/2-4BK	192670334	PF-1-1/2-4WT	192670335	PF-1-1/2-4RD	192670336	PF-1-1/2-4BL	192670337	PF-1-1/2-4CL	192670338	PF-1-1/2-4YL	1.500/38.10	.750/19.05	.040/1.02	
192670363	PF-2-4BK	192670364	PF-2-4WT	192670365	PF-2-4RD	192670366	PF-2-4BL	192670367	PF-2-4CL	192670368	PF-2-4YL	2.000/50.80	1.000/25.40	.045/1.14	
192670393	PF-3-4BK	192670394	PF-3-4WT	192670395	PF-3-4RD	192670396	PF-3-4BL	192670397	PF-3-4CL	192670398	PF-3-4YL	3.000/76.20	1.500/38.10	.050/1.27	
192670423	PF-4-4BK							192670427	PF-4-4CL			4.000/101.60	2.000/50.80	.055/1.40	
192670039	PF-3/64-5BK	192670040	PF-3/64-5WT	192670041	PF-3/64-5RD	192670042	PF-3/64-5BL	192670043	PF-3/64-5CL	192670044	PF-3/64-5YL	.046/1.17	.023/0.58	.018/0.46	
192670069	PF-1/16-5BK	192670070	PF-1/16-5WT	192670071	PF-1/16-5RD	192670072	PF-1/16-5BL	192670073	PF-1/16-5CL	192670074	PF-1/16-5YL	.063/1.60	.031/0.79	.018/0.46	
192670099	PF-3/32-5BK	192670100	PF-3/32-5WT	192670101	PF-3/32-5RD	192670102	PF-3/32-5BL	192670103	PF-3/32-5CL	192670104	PF-3/32-5YL	.093/2.36	.046/1.17	.020/0.51	
192670129	PF-1/8-5BK	192670130	PF-1/8-5WT	192670131	PF-1/8-5RD	192670132	PF-1/8-5BL	192670133	PF-1/8-5CL	192670134	PF-1/8-5YL	.125/3.18	.062/1.57	.020/0.51	
192670159	PF-3/16-5BK	192670160	PF-3/16-5WT	192670161	PF-3/16-5RD	192670162	PF-3/16-5BL	192670163	PF-3/16-5CL	192670164	PF-3/16-5YL	.187/4.75	.093/2.36	.020/0.51	
192670189	PF-1/4-5BK	192670190	PF-1/4-5WT	192670191	PF-1/4-5RD	192670192	PF-1/4-5BL	192670193	PF-1/4-5CL	192670194	PF-1/4-5YL	.250/6.35	.125/3.18	.025/0.64	
192670219	PF-3/8-5BK	192670220	PF-3/8-5WT	192670221	PF-3/8-5RD	192670222	PF-3/8-5BL	192670223	PF-3/8-5CL	192670224	PF-3/8-5YL	.375/9.53	.187/4.75	.025/0.64	
192670249	PF-1/2-5BK	192670250	PF-1/2-5WT	192670251	PF-1/2-5RD	192670252	PF-1/2-5BL	192670253	PF-1/2-5CL	192670254	PF-1/2-5YL	.500/12.70	.250/6.35	.025/0.64	

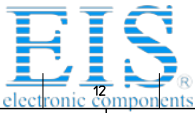
SALES DRAWING



NOTES:

- MATERIAL: POLYOLEFIN
- OTHER CUT LENGTHS ARE AVAILABLE.
- PARTS ARE RoHS COMPLIANT.

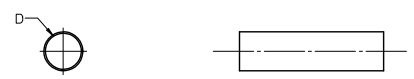
CHANGED TITLE EC NO: IF62013-0982 DRAWN: JASO1 2013/01/01 CHKD: MAONEIL 2013/01/01 APPR: MAONEIL 2013/01/01	QUALITY SYMBOLS ▽=0 ▽=0	GENERAL TOLERANCES (UNLESS SPECIFIED)	DIMENSION STYLE	SCALE	DESIGN UNITS	THIRD ANGLE PROJECTION
		mm INCH	IN/MM	1:1	INCH	
DRAWN BY BENDERLE CHECKED BY R DEROSS APPROVED BY R DEROSS	DATE 2004/08/04 DATE 2004/08/04 DATE 2004/08/04	4 PLACES ± --- ± ---	MATERIAL NO. SEE CHART	DOCUMENT NO. SD-19267-001	SHEET NO. 1 OF 1	POLYOLEFIN HEAT SHRINK TUBING 19267 SERIES
		3 PLACES ± --- ± ---				
DRAFT WHERE APPLICABLE MUST REMAIN WITHIN DIMENSIONS		THIS DRAWING CONTAINS INFORMATION THAT IS PROPRIETARY TO MOLEX INCORPORATED AND SHOULD NOT BE USED WITHOUT WRITTEN PERMISSION		MOLEX MOLEX INCORPORATED		



Distributor of Molex Connector Corporation: Excellent Integrated System Limited
 Datasheet of 0192670219 - 3/8 INCH HST BLK SMLL 100' SPOOL

Contact us: sales@integrated-circuit.com Website: www.integrated-circuit.com

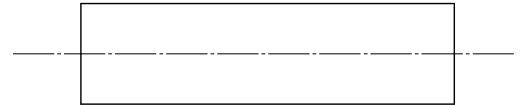
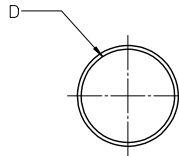
BLACK	WHITE	RED	CLEAR	YELLOW	MIN	MAX	RECOVERED	LENGTH			
MATERIAL NUMBER	ENGINEERING NUMBER	MATERIAL NUMBER	ENGINEERING NUMBER	MATERIAL NUMBER	ENGINEERING NUMBER	MATERIAL NUMBER	ENGINEERING NUMBER	EXPANDED ID 'D'	RECOVERED ID	WALL THK REF	FEET/METERS
192680018	PFV-3/64-1BK	192680019	PFV-3/64-1WT	192680020	PFV-3/64-1RD	192680021	PFV-3/64-1CL	192680022	192680023	192680024	4.0/1.2
192680043	PFV-1/16-1BK	192680044	PFV-1/16-1WT	192680045	PFV-1/16-1RD	192680046	PFV-1/16-1CL	192680047	192680048	192680049	1000/304.8
192680068	PFV-3/32-1BK	192680069	PFV-3/32-1WT	192680070	PFV-3/32-1RD	192680071	PFV-3/32-1CL	192680072	192680073	192680074	500/152.4
192680093	PFV-1/8-1BK	192680094	PFV-1/8-1WT	192680095	PFV-1/8-1RD	192680096	PFV-1/8-1CL	192680097	192680098	192680099	200/60.8
192680118	PFV-3/16-1BK	192680119	PFV-3/16-1WT	192680120	PFV-3/16-1RD	192680121	PFV-3/16-1CL	192680122	192680123	192680124	100/30.4
192680143	PFV-1/4-1BK	192680144	PFV-1/4-1WT	192680145	PFV-1/4-1RD	192680146	PFV-1/4-1CL	192680147	192680148	192680149	50/15.3
192680168	PFV-3/8-1BK	192680169	PFV-3/8-1WT	192680170	PFV-3/8-1RD	192680171	PFV-3/8-1CL	192680172	192680173	192680174	
192680193	PFV-1/2-1BK	192680194	PFV-1/2-1WT	192680195	PFV-1/2-1RD	192680196	PFV-1/2-1CL	192680197	192680198	192680199	
192680218	PFV-5/8-1BK	192680219	PFV-5/8-1WT	192680220	PFV-5/8-1RD	192680221	PFV-5/8-1CL	192680222	192680223	192680224	
192680243	PFV-3/4-1BK	192680244	PFV-3/4-1WT	192680245	PFV-3/4-1RD	192680246	PFV-3/4-1CL	192680247	192680248	192680249	
192680268	PFV-1-1BK	192680269	PFV-1-1WT	192680270	PFV-1-1RD	192680271	PFV-1-1CL	192680272	192680273	192680274	
192680293	PFV-1/4-1BK	192680294	PFV-1/4-1WT	192680295	PFV-1/4-1RD	192680296	PFV-1/4-1CL	192680297	192680298	192680299	
192680318	PFV-1/2-1BK	192680319	PFV-1/2-1WT	192680320	PFV-1/2-1RD	192680321	PFV-1/2-1CL	192680322	192680323	192680324	
192680343	PFV-3/8-1BK	192680344	PFV-3/8-1WT	192680345	PFV-3/8-1RD	192680346	PFV-3/8-1CL	192680347	192680348	192680349	
192680368	PFV-1/2-1BK	192680369	PFV-1/2-1WT	192680370	PFV-1/2-1RD	192680371	PFV-1/2-1CL	192680372	192680373	192680374	
192680393	PFV-3/4-1BK	192680394	PFV-3/4-1WT	192680395	PFV-3/4-1RD	192680396	PFV-3/4-1CL	192680397	192680398	192680399	
192680418	PFV-1-1BK	192680419	PFV-1-1WT	192680420	PFV-1-1RD	192680421	PFV-1-1CL	192680422	192680423	192680424	
192680033	PFV-3/64-4BK	192680034	PFV-3/64-4WT	192680035	PFV-3/64-4RD	192680036	PFV-3/64-4CL	192680037	192680038	192680039	
192680058	PFV-1/16-4BK	192680059	PFV-1/16-4WT	192680060	PFV-1/16-4RD	192680061	PFV-1/16-4CL	192680062	192680063	192680064	
192680083	PFV-3/32-4BK	192680084	PFV-3/32-4WT	192680085	PFV-3/32-4RD	192680086	PFV-3/32-4CL	192680087	192680088	192680089	
192680108	PFV-1/8-4BK	192680109	PFV-1/8-4WT	192680110	PFV-1/8-4RD	192680111	PFV-1/8-4CL	192680112	192680113	192680114	
192680133	PFV-3/16-4BK	192680134	PFV-3/16-4WT	192680135	PFV-3/16-4RD	192680136	PFV-3/16-4CL	192680137	192680138	192680139	
192680158	PFV-1/4-4BK	192680159	PFV-1/4-4WT	192680160	PFV-1/4-4RD	192680161	PFV-1/4-4CL	192680162	192680163	192680164	
192680183	PFV-3/8-4BK	192680184	PFV-3/8-4WT	192680185	PFV-3/8-4RD	192680186	PFV-3/8-4CL	192680187	192680188	192680189	
192680208	PFV-1/2-4BK	192680209	PFV-1/2-4WT	192680210	PFV-1/2-4RD	192680211	PFV-1/2-4CL	192680212	192680213	192680214	
192680233	PFV-5/8-4BK	192680234	PFV-5/8-4WT	192680235	PFV-5/8-4RD	192680236	PFV-5/8-4CL	192680237	192680238	192680239	
192680258	PFV-3/4-4BK	192680259	PFV-3/4-4WT	192680260	PFV-3/4-4RD	192680261	PFV-3/4-4CL	192680262	192680263	192680264	
192680283	PFV-1-4BK	192680284	PFV-1-4WT	192680285	PFV-1-4RD	192680286	PFV-1-4CL	192680287	192680288	192680289	
192680308	PFV-1/4-4BK	192680309	PFV-1/4-4WT	192680310	PFV-1/4-4RD	192680311	PFV-1/4-4CL	192680312	192680313	192680314	
192680333	PFV-1/2-4BK	192680334	PFV-1/2-4WT	192680335	PFV-1/2-4RD	192680336	PFV-1/2-4CL	192680337	192680338	192680339	
192680358	PFV-3/64-5BK	192680359	PFV-3/64-5WT	192680360	PFV-3/64-5RD	192680361	PFV-3/64-5CL	192680362	192680363	192680364	
192680063	PFV-1/16-5BK	192680064	PFV-1/16-5WT	192680065	PFV-1/16-5RD	192680066	PFV-1/16-5CL	192680067	192680068	192680069	
192680088	PFV-3/32-5BK	192680089	PFV-3/32-5WT	192680090	PFV-3/32-5RD	192680091	PFV-3/32-5CL	192680092	192680093	192680094	
192680113	PFV-1/8-5BK	192680114	PFV-1/8-5WT	192680115	PFV-1/8-5RD	192680116	PFV-1/8-5CL	192680117	192680118	192680119	
192680138	PFV-3/16-5BK	192680139	PFV-3/16-5WT	192680140	PFV-3/16-5RD	192680141	PFV-3/16-5CL	192680142	192680143	192680144	
192680163	PFV-1/4-5BK	192680164	PFV-1/4-5WT	192680165	PFV-1/4-5RD	192680166	PFV-1/4-5CL	192680167	192680168	192680169	
192680188	PFV-3/8-5BK	192680189	PFV-3/8-5WT	192680190	PFV-3/8-5RD	192680191	PFV-3/8-5CL	192680192	192680193	192680194	
192680213	PFV-1/2-5BK	192680214	PFV-1/2-5WT	192680215	PFV-1/2-5RD	192680216	PFV-1/2-5CL	192680217	192680218	192680219	
192680238	PFV-5/8-5BK	192680239	PFV-5/8-5WT	192680240	PFV-5/8-5RD	192680241	PFV-5/8-5CL	192680242	192680243	192680244	
192680263	PFV-3/4-5BK	192680264	PFV-3/4-5WT	192680265	PFV-3/4-5RD	192680266	PFV-3/4-5CL	192680267	192680268	192680269	
192680288	PFV-1-5BK	192680289	PFV-1-5WT	192680290	PFV-1-5RD	192680291	PFV-1-5CL	192680292	192680293	192680294	
192680313	PFV-1/4-5BK	192680314	PFV-1/4-5WT	192680315	PFV-1/4-5RD	192680316	PFV-1/4-5CL	192680317	192680318	192680319	
192680338	PFV-1/2-5BK	192680339	PFV-1/2-5WT	192680340	PFV-1/2-5RD	192680341	PFV-1/2-5CL	192680342	192680343	192680344	
192680363	PFV-3/8-5BK	192680364	PFV-3/8-5WT	192680365	PFV-3/8-5RD	192680366	PFV-3/8-5CL	192680367	192680368	192680369	
192680388	PFV-1/2-5BK	192680389	PFV-1/2-5WT	192680390	PFV-1/2-5RD	192680391	PFV-1/2-5CL	192680392	192680393	192680394	
192680413	PFV-5/8-5BK	192680414	PFV-5/8-5WT	192680415	PFV-5/8-5RD	192680416	PFV-5/8-5CL	192680417	192680418	192680419	
192680438	PFV-3/4-5BK	192680439	PFV-3/4-5WT	192680440	PFV-3/4-5RD	192680441	PFV-3/4-5CL	192680442	192680443	192680444	
192680463	PFV-1-5BK	192680464	PFV-1-5WT	192680465	PFV-1-5RD	192680466	PFV-1-5CL	192680467	192680468	192680469	



- NOTES:
- MATERIAL: PVC.
 - OTHER CUT LENGTHS ARE AVAILABLE.
 - PARTS ARE ROHS COMPLIANT.

CHANGED TITLE EC NO: IP6203-0962 DRAWN BY: JASOT 2010/1/10 CHECKED: MALINEIL 2010/01/10 APPR: MALINEIL 2010/01/13	QUALITY SYMBOLS ▽=0 ▽=0	GENERAL TOLERANCES (UNLESS SPECIFIED) mm INCH 4 PLACES ± --- ± --- 3 PLACES ± --- ± .010 2 PLACES ± 0.25 ± .02 1 PLACE ± 0.5 ± --- ANGULAR ± ---°		DIMENSION STYLE IN/MM DRAWN BY: BENDERLE DATE: 2004/09/23 CHECKED BY: R DEROSS DATE: 2004/09/23 APPROVED BY: JFMURPHY DATE: 2010/04/07		SCALE 1:1	DESIGN UNITS INCH	THIRD ANGLE PROJECTION	TITLE PVC, HEAT SHRINK TUBING 19268 SERIES
		DRAFT WHERE APPLICABLE MUST REMAIN WITHIN DIMENSIONS		SEE CHART		MATERIAL NO. SD-19268-001	DOCUMENT NO. SD-19268-001	SHEET NO. 1 OF 1	

	10	9	8	7	6	5	4	3	2	19269
	BLACK		CLEAR		MIN	MAX	RECOVERED	LENGTH		
F	MATERIAL NUMBER	ENGINEERING NUMBER	MATERIAL NUMBER	ENGINEERING NUMBER	EXPANDED ID "D"	RECOVERED ID	WALL THK REF	FEET/METERS		
	192690008	PF3-1/8-1BK			.125/3.018	.040/1.02	.038/0.97	4.0/1.2		
	192690013	PF3-3/16-1BK			.187/4.75	.060/1.52	.045/1.14			
			192690043	PF3-3/16-1CL	.225/5.72	.050/1.27	.045/1.14			
	192690018	PF3-1/4-1BK			.250/6.35	.080/2.03	.047/1.19			
			192690048	PF3-1/4-1CL	.293/7.44	.065/1.65	.047/1.19			
	192690023	PF3-3/8-1BK			.375/9.53	.120/3.05	.050/1.27			
			192690053	PF3-3/8-1CL	.427/10.85	.095/2.43	.050/1.27			
E	192690028	PF3-1/2-1BK			.500/12.70	.157/3.99	.055/1.40			
			192690058	PF3-1/2-1CL	.700/17.78	.175/4.45	.055/1.40			
	192690033	PF3-3/4-1BK			.750/19.05	.230/5.84	.065/1.65			
	192690038	PF3-1-1BK			1.000/25.40	.320/8.13	.075/1.90			



SALES DRAWING

NOTES:

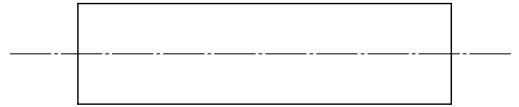
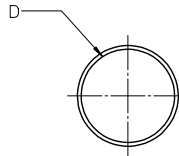
(A1)

- MATERIAL: POLYOLEFIN WITH ADHESIVE LINER.
- OTHER CUT LENGTHS ARE AVAILABLE.
- PARTS ARE RoHS COMPLIANT.

(A1)

CORRECT MAT'L E.C. NO: IPG/2013-0982 DRAWING: JAS01 2013/01/10 CHKD: JACNEL 2013/01/10 APPR: JACNEL 2013/01/31 REV: A1	QUALITY SYMBOLS	GENERAL TOLERANCES (UNLESS SPECIFIED)		DIMENSION STYLE		SCALE	DESIGN UNITS	THIRD ANGLE PROJECTION
	▽=0 ▽=0	mm	INCH	IN/MM		1:1	INCH	
		4 PLACES ±---	±---	DRAWN BY		DATE	TITLE (A1) POLYOLEFIN W/ ADHESIVE LINER HEAT SHRINK TUBING 19269 SERIES MOLEX INCORPORATED MATERIAL NO. SD-19269-001 DOCUMENT NO. SD-19269-001 SHEET NO. 1 OF 1	
		3 PLACES ±---	±.010	BENDERLE		2004/09/23		
2 PLACES ±0.25	±.02	CHECKED BY		DATE				
	1 PLACE ±0.51	±---	R DEROSS		2004/09/23			
	ANGULAR ±---		APPROVED BY		DATE			
	DRAFT WHERE APPLICABLE MUST REMAIN WITHIN DIMENSIONS		R DEROSS		2004/09/23			
			MATERIAL NO.		DATE			
			SEE CHART		DATE			

10		9		8		7		6		5		4		3		2		19270				
BLACK		RED		MIN		MAX		RECOVERED		LENGTH												
MATERIAL NUMBER	ENGINEERING NUMBER	MATERIAL NUMBER	ENGINEERING NUMBER	EXPANDED ID "D"	RECOVERED ID	WALL THK REF	FEET/METERS															
192700008	PFB-04-1BK	192700013	PFB-04-1RD	.400/10.16	.150/3.81	.060/1.53	4.0/1.2															
192700018	PFB-07-1BK	192700023	PFB-07-1RD	.750/19.05	.220/5.59	.095/2.41																
192700028	PFB-11-1BK	192700033	PFB-11-1RD	1.100/27.94	.375/9.53	.120/3.05																
192700038	PFB-15-1BK	192700043	PFB-15-1RD	1.500/38.10	.500/19.05	.140/3.56																
192700048	PFB-20-1BK	192700053	PFB-20-1RD	2.000/50.80	.750/19.05	.155/3.98																
192700058	PFB-30-1BK	192700063	PFB-30-1RD	3.540/89.92	1.18/29.97	.155/3.98																
192700068	PFB-40-1BK	192700073	PFB-40-1RD	4.72/119.89	1.57/39.88	.170/4.37																



SALES DRAWING

NOTES:

1. MATERIAL: POLYOLEFIN
2. OTHER CUT LENGTHS ARE AVAILABLE.
3. PARTS ARE ROHS COMPLIANT.

(A1)

CHANGED TITLE E.C. NO: IPG/2013-0982 DRAWING: JAS01 2013/01/10 CHKD: JACNEL 2013/01/10 APPR: JACNEL 2013/01/31 REV: A1	QUALITY SYMBOLS ▽=0 ▽=0	GENERAL TOLERANCES (UNLESS SPECIFIED)		DIMENSION STYLE IN/MM		SCALE 1:1	DESIGN UNITS INCH	THIRD ANGLE PROJECTION
		4 PLACES ± --- ± --- 3 PLACES ± --- ± .010 2 PLACES ± 0.25 ± .02 1 PLACE ± 0.51 ± ---	mm INCH	DRAWN BY: BENDERLE DATE: 2004/09/23	TITLE POLYOLEFIN HEAT SHRINK TUBING 19270 SERIES			
		ANGULAR ± ---°	DRAFT WHERE APPLICABLE MUST REMAIN WITHIN DIMENSIONS	CHECKED BY: R. DEROSS DATE: 2004/09/23	MATERIAL NO. SEE CHART			
			APPROVED BY: R. DEROSS DATE: 2004/09/23	DOCUMENT NO. SD-19270-001		SHEET NO. 1 OF 1		