



## Excellent Integrated System Limited

Stocking Distributor

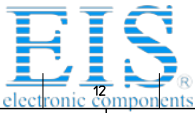
Click to view price, real time Inventory, Delivery & Lifecycle Information:

[Molex Connector Corporation](#)  
[0192670243](#)

For any questions, you can email us directly:

[sales@integrated-circuit.com](mailto:sales@integrated-circuit.com)





Distributor of Molex Connector Corporation: Excellent Integrated System Limited  
 Datasheet of 0192670243 - 1/2 INCH HST BLACK LG 200' SPOOL

Contact us: sales@integrated-circuit.com Website: www.integrated-circuit.com

BLACK	WHITE	RED	CLEAR	YELLOW	MIN	MAX	RECOVERED	LENGTH
MATERIAL NUMBER	ENGINEERING NUMBER	MATERIAL NUMBER	ENGINEERING NUMBER	MATERIAL NUMBER	ENGINEERING NUMBER	MATERIAL NUMBER	ENGINEERING NUMBER	FEET/METERS
192680018	PFV-3/64-1BK	192680019	PFV-3/64-1WT	192680020	PFV-3/64-1RD	192680021	PFV-3/64-1CL	4.0/1.2
192680043	PFV-1/16-1BK	192680044	PFV-1/16-1WT	192680045	PFV-1/16-1RD	192680046	PFV-1/16-1CL	1000/304.8
192680068	PFV-3/32-1BK	192680069	PFV-3/32-1WT	192680070	PFV-3/32-1RD	192680071	PFV-3/32-1CL	500/152.4
192680093	PFV-1/8-1BK	192680094	PFV-1/8-1WT	192680095	PFV-1/8-1RD	192680096	PFV-1/8-1CL	200/60.8
192680118	PFV-3/16-1BK	192680119	PFV-3/16-1WT	192680120	PFV-3/16-1RD	192680121	PFV-3/16-1CL	100/30.4
192680143	PFV-1/4-1BK	192680144	PFV-1/4-1WT	192680145	PFV-1/4-1RD	192680146	PFV-1/4-1CL	50/15.3
192680168	PFV-3/8-1BK	192680169	PFV-3/8-1WT	192680170	PFV-3/8-1RD	192680171	PFV-3/8-1CL	
192680193	PFV-1/2-1BK	192680194	PFV-1/2-1WT	192680195	PFV-1/2-1RD	192680196	PFV-1/2-1CL	
192680218	PFV-5/8-1BK	192680219	PFV-5/8-1WT	192680220	PFV-5/8-1RD	192680221	PFV-5/8-1CL	
192680243	PFV-3/4-1BK	192680244	PFV-3/4-1WT	192680245	PFV-3/4-1RD	192680246	PFV-3/4-1CL	
192680268	PFV-1-1BK	192680269	PFV-1-1WT	192680270	PFV-1-1RD	192680271	PFV-1-1CL	
192680293	PFV-1-1/4-1BK	192680294	PFV-1-1/4-1WT	192680295	PFV-1-1/4-1RD	192680296	PFV-1-1/4-1CL	
192680318	PFV-1-1/2-1BK	192680319	PFV-1-1/2-1WT	192680320	PFV-1-1/2-1RD	192680321	PFV-1-1/2-1CL	
192680343	PFV-2-1BK	192680344	PFV-2-1WT	192680345	PFV-2-1RD	192680346	PFV-2-1CL	
192680368	PFV-3-1BK	092680369	PFV-3-1WT	192680370	PFV-3-1RD	192680371	PFV-3-1CL	
192680393	PFV-4-1BK	192680394	PFV-4-1WT	192680395	PFV-4-1RD	192680396	PFV-4-1CL	
192680418	PFV-3/64-4BK	192680419	PFV-3/64-4WT	192680420	PFV-3/64-4RD	192680421	PFV-3/64-4CL	
192680058	PFV-1/16-4BK	192680059	PFV-1/16-4WT	192680060	PFV-1/16-4RD	192680061	PFV-1/16-4CL	
192680083	PFV-3/32-4BK	192680084	PFV-3/32-4WT	192680085	PFV-3/32-4RD	192680086	PFV-3/32-4CL	
192680108	PFV-1/8-4BK	192680109	PFV-1/8-4WT	192680110	PFV-1/8-4RD	192680111	PFV-1/8-4CL	
192680133	PFV-3/16-4BK	192680134	PFV-3/16-4WT	192680135	PFV-3/16-4RD	192680136	PFV-3/16-4CL	
192680158	PFV-1/4-4BK	192680159	PFV-1/4-4WT	192680160	PFV-1/4-4RD	192680161	PFV-1/4-4CL	
192680183	PFV-3/8-4BK	192680184	PFV-3/8-4WT	192680185	PFV-3/8-4RD	192680186	PFV-3/8-4CL	
192680208	PFV-1/2-4BK	192680209	PFV-1/2-4WT	192680210	PFV-1/2-4RD	192680211	PFV-1/2-4CL	
192680233	PFV-5/8-4BK	192680234	PFV-5/8-4WT	192680235	PFV-5/8-4RD	192680236	PFV-5/8-4CL	
192680258	PFV-3/4-4BK	192680259	PFV-3/4-4WT	192680260	PFV-3/4-4RD	192680261	PFV-3/4-4CL	
192680283	PFV-1-4BK	192680284	PFV-1-4WT	192680285	PFV-1-4RD	192680286	PFV-1-4CL	
192680308	PFV-1-1/4-4BK	192680309	PFV-1-1/4-4WT	192680310	PFV-1-1/4-4RD	192680311	PFV-1-1/4-4CL	
192680333	PFV-1-1/2-4BK	192680334	PFV-1-1/2-4WT	192680335	PFV-1-1/2-4RD	192680336	PFV-1-1/2-4CL	
192680358	PFV-3/64-5BK	192680359	PFV-3/64-5WT	192680360	PFV-3/64-5RD	192680361	PFV-3/64-5CL	
192680063	PFV-1/16-5BK	192680064	PFV-1/16-5WT	192680065	PFV-1/16-5RD	192680066	PFV-1/16-5CL	
192680088	PFV-3/32-5BK	192680089	PFV-3/32-5WT	192680090	PFV-3/32-5RD	192680091	PFV-3/32-5CL	
192680113	PFV-1/8-5BK	192680114	PFV-1/8-5WT	192680115	PFV-1/8-5RD	192680116	PFV-1/8-5CL	
192680138	PFV-3/16-5BK	192680139	PFV-3/16-5WT	192680140	PFV-3/16-5RD	192680141	PFV-3/16-5CL	
192680163	PFV-1/4-5BK	192680164	PFV-1/4-5WT	192680165	PFV-1/4-5RD	192680166	PFV-1/4-5CL	
192680188	PFV-3/8-5BK	192680189	PFV-3/8-5WT	192680190	PFV-3/8-5RD	192680191	PFV-3/8-5CL	
192680213	PFV-1/2-5BK	192680214	PFV-1/2-5WT	192680215	PFV-1/2-5RD	192680216	PFV-1/2-5CL	
192680238	PFV-5/8-5BK	192680239	PFV-5/8-5WT	192680240	PFV-5/8-5RD	192680241	PFV-5/8-5CL	
192680263	PFV-3/4-5BK	192680264	PFV-3/4-5WT	192680265	PFV-3/4-5RD	192680266	PFV-3/4-5CL	
192680288	PFV-1-5BK	192680289	PFV-1-5WT	192680290	PFV-1-5RD	192680291	PFV-1-5CL	
192680313	PFV-1-1/4-5BK	192680314	PFV-1-1/4-5WT	192680315	PFV-1-1/4-5RD	192680316	PFV-1-1/4-5CL	
192680338	PFV-1-1/2-5BK	192680339	PFV-1-1/2-5WT	192680340	PFV-1-1/2-5RD	192680341	PFV-1-1/2-5CL	
192680363	PFV-2-5BK	192680364	PFV-2-5WT	192680365	PFV-2-5RD	192680366	PFV-2-5CL	
192680388	PFV-3-5BK	192680389	PFV-3-5WT	192680390	PFV-3-5RD	192680391	PFV-3-5CL	
192680413	PFV-4-5BK	192680414	PFV-4-5WT	192680415	PFV-4-5RD	192680416	PFV-4-5CL	

NOTES:  
 1. MATERIAL: PVC.  
 2. OTHER CUT LENGTHS ARE AVAILABLE.  
 3. PARTS ARE ROHS COMPLIANT.

CHANGED TITLE: EC NO: IP6203-0962  
 DRAWN BY: JASOT 20101010  
 CHECKED: WJANEIL 20101010  
 APPR: WJANEIL 20101010

QUALITY SYMBOLS:  
 ▽=0  
 ▽=0

GENERAL TOLERANCES (UNLESS SPECIFIED):  
 4 PLACES ± --- INCH  
 3 PLACES ± --- ±.010  
 2 PLACES ± 0.25 ±.02  
 1 PLACE ± 0.5 ± ---  
 ANGULAR ± ---°

DIMENSION STYLE: IN/MM  
 DRAWN BY: BENDERLE DATE: 2004/09/23  
 CHECKED BY: DATE: DATE: 2004/09/23  
 APPROVED BY: JFMURPHY DATE: 2010/04/07

SCALE: 1:1  
 DESIGN UNITS: INCH  
 THIRD ANGLE PROJECTION

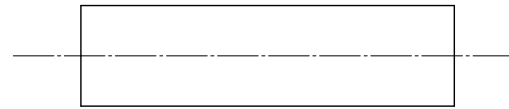
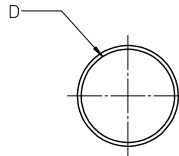
TITLE: PVC, HEAT SHRINK TUBING 19268 SERIES

MATERIAL NO. MOLEX INCORPORATED  
 DOCUMENT NO. SD-19268-001  
 SHEET NO. 1 OF 1

DRAFT WHERE APPLICABLE MUST REMAIN WITHIN DIMENSIONS

THIS DRAWING CONTAINS INFORMATION THAT IS PROPRIETARY TO MOLEX INCORPORATED AND SHOULD NOT BE USED WITHOUT WRITTEN PERMISSION

10		9		8		7		6		5		4		3		2		19269				
BLACK		CLEAR		MIN		MAX		RECOVERED		LENGTH												
MATERIAL NUMBER	ENGINEERING NUMBER	MATERIAL NUMBER	ENGINEERING NUMBER	EXPANDED ID "D"	RECOVERED ID	WALL THK REF	FEET/METERS															
192690008	PF3-1/8-1BK			.125/3.018	.040/1.02	.038/0.97	4.0/1.2															
192690013	PF3-3/16-1BK			.187/4.75	.060/1.52	.045/1.14																
		192690043	PF3-3/16-1CL	.225/5.72	.050/1.27	.045/1.14																
192690018	PF3-1/4-1BK			.250/6.35	.080/2.03	.047/1.19																
		192690048	PF3-1/4-1CL	.293/7.44	.065/1.65	.047/1.19																
192690023	PF3-3/8-1BK			.375/9.53	.120/3.05	.050/1.27																
		192690053	PF3-3/8-1CL	.427/10.85	.095/2.43	.050/1.27																
192690028	PF3-1/2-1BK			.500/12.70	.157/3.99	.055/1.40																
		192690058	PF3-1/2-1CL	.700/17.78	.175/4.45	.055/1.40																
192690033	PF3-3/4-1BK			.750/19.05	.230/5.84	.065/1.65																
192690038	PF3-1-1BK			1.000/25.40	.320/8.13	.075/1.90																



SALES DRAWING

NOTES:

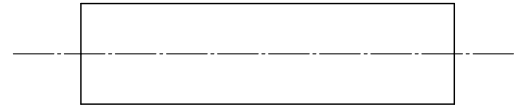
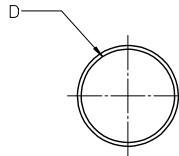
(A1)

- MATERIAL: POLYOLEFIN WITH ADHESIVE LINER.
- OTHER CUT LENGTHS ARE AVAILABLE.
- PARTS ARE RoHS COMPLIANT.

(A1)

CORRECT MAT'L E.C. NO: IPG/2013-0982 DRAWN BY: JASOT 2013/01/10 CHKD: JACNETL 2013/01/10 APPR: JACNETL 2013/01/31 REV: A1	QUALITY SYMBOLS	GENERAL TOLERANCES (UNLESS SPECIFIED)		DIMENSION STYLE IN/MM		SCALE 1:1	DESIGN UNITS INCH	THIRD ANGLE PROJECTION
	▽=0	4 PLACES	± ---	± ---	DRAWN BY	DATE	TITLE	
	▽=0	3 PLACES	± ---	± .010	BENDERLE	2004/09/23	(A1) POLYOLEFIN W/ ADHESIVE LINER HEAT SHRINK TUBING 19269 SERIES	
		2 PLACES	± 0.25	± .02	CHECKED BY	DATE	Molex MOLEX INCORPORATED	
	1 PLACE	± 0.51	± ---	R DEROSS	2004/09/23	MATERIAL NO. SD-19269-001		
	ANGULAR ± ---°	DRAFT WHERE APPLICABLE MUST REMAIN WITHIN DIMENSIONS		APPROVED BY		DATE	SHEET NO. 1 OF 1	
				R DEROSS		2004/09/23	DOCUMENT NO. SD-19269-001	
				MATERIAL NO.		DATE	THIS DRAWING CONTAINS INFORMATION THAT IS PROPRIETARY TO MOLEX INCORPORATED AND SHOULD NOT BE USED WITHOUT WRITTEN PERMISSION	
				SEE CHART		DATE		

BLACK		RED		MIN	MAX	RECOVERED	LENGTH
MATERIAL NUMBER	ENGINEERING NUMBER	MATERIAL NUMBER	ENGINEERING NUMBER	EXPANDED ID "D"	RECOVERED ID	WALL THK REF	FEET/METERS
192700008	PFB-04-1BK	192700013	PFB-04-1RD	.400/10.16	.150/3.81	.060/1.53	4.0/1.2
192700018	PFB-07-1BK	192700023	PFB-07-1RD	.750/19.05	.220/5.59	.095/2.41	
192700028	PFB-11-1BK	192700033	PFB-11-1RD	1.100/27.94	.375/9.53	.120/3.05	
192700038	PFB-15-1BK	192700043	PFB-15-1RD	1.500/38.10	.500/19.05	.140/3.56	
192700048	PFB-20-1BK	192700053	PFB-20-1RD	2.000/50.80	.750/19.05	.155/3.98	
192700058	PFB-30-1BK	192700063	PFB-30-1RD	3.540/89.92	1.18/29.97	.155/3.98	
192700068	PFB-40-1BK	192700073	PFB-40-1RD	4.72/119.89	1.57/39.88	.170/4.37	



SALES DRAWING

NOTES:

1. MATERIAL: POLYOLEFIN
2. OTHER CUT LENGTHS ARE AVAILABLE.
3. PARTS ARE RoHS COMPLIANT.

(A1)

<b>CHANGED TITLE</b> E.C. NO: IPG/2013-0982 DRAWING: JAS01 2013/01/10 CHKD: IMACNEIL 2013/01/10 APPR: IMACNEIL 2013/01/31 REV: A1	<b>QUALITY SYMBOLS</b> ▽=0 ▽=0	<b>GENERAL TOLERANCES (UNLESS SPECIFIED)</b> <table border="1"> <thead> <tr> <th></th> <th>mm</th> <th>INCH</th> </tr> </thead> <tbody> <tr> <td>4 PLACES</td> <td>± .---</td> <td>± .---</td> </tr> <tr> <td>3 PLACES</td> <td>± .---</td> <td>± .010</td> </tr> <tr> <td>2 PLACES</td> <td>± 0.25</td> <td>± .02</td> </tr> <tr> <td>1 PLACE</td> <td>± 0.51</td> <td>± .---</td> </tr> <tr> <td colspan="3">ANGULAR ± .---</td> </tr> </tbody> </table>		mm	INCH	4 PLACES	± .---	± .---	3 PLACES	± .---	± .010	2 PLACES	± 0.25	± .02	1 PLACE	± 0.51	± .---	ANGULAR ± .---			<b>DIMENSION STYLE</b> IN/MM	<b>SCALE</b> 1:1	<b>DESIGN UNITS</b> INCH	THIRD ANGLE PROJECTION
		mm	INCH																					
	4 PLACES	± .---	± .---																					
	3 PLACES	± .---	± .010																					
2 PLACES	± 0.25	± .02																						
1 PLACE	± 0.51	± .---																						
ANGULAR ± .---																								
		DRAWN BY: BENDERLE DATE: 2004/09/23 CHECKED BY: R. DEROSS DATE: 2004/09/23 APPROVED BY: R. DEROSS DATE: 2004/09/23	<b>TITLE</b> (A1) POLYOLEFIN HEAT SHRINK TUBING 19270 SERIES	<b>MOLEX INCORPORATED</b>																				
		DRAFT WHERE APPLICABLE MUST REMAIN WITHIN DIMENSIONS	<b>MATERIAL NO.</b> SEE CHART	<b>DOCUMENT NO.</b> SD-19270-001	<b>SHEET NO.</b> 1 OF 1																			
THIS DRAWING CONTAINS INFORMATION THAT IS PROPRIETARY TO MOLEX INCORPORATED AND SHOULD NOT BE USED WITHOUT WRITTEN PERMISSION																								