



Distributor of Molex Connector Corporation: Excellent Integrated System Limited

Datasheet of 0192670245 - 1/2 INCH HST RED LG 200' SPOOL

Contact us: sales@integrated-circuit.com Website: www.integrated-circuit.com

Excellent Integrated System Limited

Stocking Distributor

Click to view price, real time Inventory, Delivery & Lifecycle Information:

[Molex Connector Corporation](#)
[0192670245](#)

For any questions, you can email us directly:

sales@integrated-circuit.com

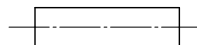


Distributor of Molex Connector Corporation: Excellent Integrated System Limited
 Datasheet of 0192670245 - 1/2 INCH HST RED LG 200' SPOOL

Contact us: sales@integrated-circuit.com Website: www.integrated-circuit.com

| BLACK | | WHITE | | RED | | BLUE | | CLEAR | | YELLOW | | MIN | MAX | RECOVERED | LENGTH |
|-----------------|--------------------|-----------------|--------------------|-----------------|--------------------|-----------------|--------------------|-----------------|--------------------|-----------------|--------------------|-----------------|--------------|--------------|-------------|
| MATERIAL NUMBER | ENGINEERING NUMBER | MATERIAL NUMBER | ENGINEERING NUMBER | MATERIAL NUMBER | ENGINEERING NUMBER | MATERIAL NUMBER | ENGINEERING NUMBER | MATERIAL NUMBER | ENGINEERING NUMBER | MATERIAL NUMBER | ENGINEERING NUMBER | EXPANDED ID 'D' | RECOVERED ID | WALL THK REF | FEET/METERS |
| 192670015 | PF-3/64-1BK | 192670016 | PF-3/64-1WT | 192670017 | PF-3/64-1RD | 192670018 | PF-3/64-1BL | 192670019 | PF-3/64-1CL | 192670020 | PF-3/64-1YL | .046/1.17 | .023/0.58 | .018/0.46 | 4.0/1.2 |
| 192670045 | PF-1/16-1BK | 192670046 | PF-1/16-1WT | 192670047 | PF-1/16-1RD | 192670048 | PF-1/16-1BL | 192670049 | PF-1/16-1CL | 192670050 | PF-1/16-1YL | .063/1.60 | .031/0.79 | .018/0.46 | |
| 192670075 | PF-3/32-1BK | 192670076 | PF-3/32-1WT | 192670077 | PF-3/32-1RD | 192670078 | PF-3/32-1BL | 192670079 | PF-3/32-1CL | 192670080 | PF-3/32-1YL | .093/2.36 | .046/1.17 | .020/0.51 | |
| 192670105 | PF-1/8-1BK | 192670106 | PF-1/8-1WT | 192670107 | PF-1/8-1RD | 192670108 | PF-1/8-1BL | 192670109 | PF-1/8-1CL | 192670110 | PF-1/8-1YL | .125/3.18 | .062/1.57 | .020/0.51 | |
| 192670135 | PF-3/16-1BK | 192670136 | PF-3/16-1WT | 192670137 | PF-3/16-1RD | 192670138 | PF-3/16-1BL | 192670139 | PF-3/16-1CL | 192670140 | PF-3/16-1YL | .187/4.75 | .093/2.36 | .020/0.51 | |
| 192670165 | PF-1/4-1BK | 192670166 | PF-1/4-1WT | 192670167 | PF-1/4-1RD | 192670168 | PF-1/4-1BL | 192670169 | PF-1/4-1CL | 192670170 | PF-1/4-1YL | .250/6.35 | .125/3.18 | .025/0.64 | |
| 192670195 | PF-3/8-1BK | 192670196 | PF-3/8-1WT | 192670197 | PF-3/8-1RD | 192670198 | PF-3/8-1BL | 192670199 | PF-3/8-1CL | 192670200 | PF-3/8-1YL | .375/9.53 | .187/4.75 | .025/0.64 | |
| 192670225 | PF-1/2-1BK | 192670226 | PF-1/2-1WT | 192670227 | PF-1/2-1RD | 192670228 | PF-1/2-1BL | 192670229 | PF-1/2-1CL | 192670230 | PF-1/2-1YL | .500/12.70 | .250/6.35 | .025/0.64 | |
| 192670255 | PF-3/4-1BK | 192670256 | PF-3/4-1WT | 192670257 | PF-3/4-1RD | 192670258 | PF-3/4-1BL | 192670259 | PF-3/4-1CL | 192670260 | PF-3/4-1YL | .750/19.05 | .375/9.53 | .030/0.76 | |
| 192670285 | PF-1-1BK | 192670286 | PF-1-1WT | 192670287 | PF-1-1RD | 192670288 | PF-1-1BL | 192670289 | PF-1-1CL | 192670290 | PF-1-1YL | 1.000/25.40 | .500/12.70 | .035/0.89 | |
| 192670315 | PF-1-1/2-1BK | 192670316 | PF-1-1/2-1WT | 192670317 | PF-1-1/2-1RD | 192670318 | PF-1-1/2-1BL | 192670319 | PF-1-1/2-1CL | 192670320 | PF-1-1/2-1YL | 1.500/38.10 | .750/19.05 | .040/1.02 | |
| 192670345 | PF-2-1BK | 192670346 | PF-2-1WT | 192670347 | PF-2-1RD | 192670348 | PF-2-1BL | 192670349 | PF-2-1CL | 192670350 | PF-2-1YL | 2.000/50.80 | 1.000/25.40 | .045/1.14 | |
| 192670375 | PF-3-1BK | 192670376 | PF-3-1WT | 192670377 | PF-3-1RD | 192670378 | PF-3-1BL | 192670379 | PF-3-1CL | 192670380 | PF-3-1YL | 3.000/76.20 | 1.500/38.10 | .050/1.27 | |
| 192670405 | PF-4-1BK | | | | | | | 192670409 | PF-3-1CL | | | 4.000/101.60 | 2.000/50.80 | .055/1.40 | |
| 192670033 | PF-3/64-4BK | 192670034 | PF-3/64-4WT | 192670035 | PF-3/64-4RD | 192670036 | PF-3/64-4BL | 192670037 | PF-3/64-4CL | 192670038 | PF-3/64-4YL | .046/1.17 | .023/0.58 | .018/0.46 | |
| 192670063 | PF-1/16-4BK | 192670064 | PF-1/16-4WT | 192670065 | PF-1/16-4RD | 192670066 | PF-1/16-4BL | 192670067 | PF-1/16-4CL | 192670068 | PF-1/16-4YL | .063/1.60 | .031/0.79 | .018/0.46 | |
| 192670093 | PF-3/32-4BK | 192670094 | PF-3/32-4WT | 192670095 | PF-3/32-4RD | 192670096 | PF-3/32-4BL | 192670097 | PF-3/32-4CL | 192670098 | PF-3/32-4YL | .093/2.36 | .046/1.17 | .020/0.51 | |
| 192670123 | PF-1/8-4BK | 192670124 | PF-1/8-4WT | 192670125 | PF-1/8-4RD | 192670126 | PF-1/8-4BL | 192670127 | PF-1/8-4CL | 192670128 | PF-1/8-4YL | .125/3.18 | .062/1.57 | .020/0.51 | |
| 192670153 | PF-3/16-4BK | 192670154 | PF-3/16-4WT | 192670155 | PF-3/16-4RD | 192670156 | PF-3/16-4BL | 192670157 | PF-3/16-4CL | 192670158 | PF-3/16-4YL | .187/4.75 | .093/2.36 | .020/0.51 | |
| 192670183 | PF-1/4-4BK | 192670184 | PF-1/4-4WT | 192670185 | PF-1/4-4RD | 192670186 | PF-1/4-4BL | 192670187 | PF-1/4-4CL | 192670188 | PF-1/4-4YL | .250/6.35 | .125/3.18 | .025/0.64 | |
| 192670213 | PF-3/8-4BK | 192670214 | PF-3/8-4WT | 192670215 | PF-3/8-4RD | 192670216 | PF-3/8-4BL | 192670217 | PF-3/8-4CL | 192670218 | PF-3/8-4YL | .375/9.53 | .187/4.75 | .025/0.64 | |
| 192670243 | PF-1/2-4BK | 192670244 | PF-1/2-4WT | 192670245 | PF-1/2-4RD | 192670246 | PF-1/2-4BL | 192670247 | PF-1/2-4CL | 192670248 | PF-1/2-4YL | .500/12.70 | .250/6.35 | .025/0.64 | |
| 192670273 | PF-3/4-4BK | 192670274 | PF-3/4-4WT | 192670275 | PF-3/4-4RD | 192670276 | PF-3/4-4BL | 192670277 | PF-3/4-4CL | 192670278 | PF-3/4-4YL | .750/19.05 | .375/9.53 | .030/0.76 | |
| 192670303 | PF-1-4BK | 192670304 | PF-1-4WT | 192670305 | PF-1-4RD | 192670306 | PF-1-4BL | 192670307 | PF-1-4CL | 192670308 | PF-1-4YL | 1.000/25.40 | .500/12.70 | .035/0.89 | |
| 192670333 | PF-1-1/2-4BK | 192670334 | PF-1-1/2-4WT | 192670335 | PF-1-1/2-4RD | 192670336 | PF-1-1/2-4BL | 192670337 | PF-1-1/2-4CL | 192670338 | PF-1-1/2-4YL | 1.500/38.10 | .750/19.05 | .040/1.02 | |
| 192670363 | PF-2-4BK | 192670364 | PF-2-4WT | 192670365 | PF-2-4RD | 192670366 | PF-2-4BL | 192670367 | PF-2-4CL | 192670368 | PF-2-4YL | 2.000/50.80 | 1.000/25.40 | .045/1.14 | |
| 192670393 | PF-3-4BK | 192670394 | PF-3-4WT | 192670395 | PF-3-4RD | 192670396 | PF-3-4BL | 192670397 | PF-3-4CL | 192670398 | PF-3-4YL | 3.000/76.20 | 1.500/38.10 | .050/1.27 | |
| 192670423 | PF-4-4BK | | | | | | | 192670427 | PF-4-4CL | | | 4.000/101.60 | 2.000/50.80 | .055/1.40 | |
| 192670039 | PF-3/64-5BK | 192670040 | PF-3/64-5WT | 192670041 | PF-3/64-5RD | 192670042 | PF-3/64-5BL | 192670043 | PF-3/64-5CL | 192670044 | PF-3/64-5YL | .046/1.17 | .023/0.58 | .018/0.46 | |
| 192670069 | PF-1/16-5BK | 192670070 | PF-1/16-5WT | 192670071 | PF-1/16-5RD | 192670072 | PF-1/16-5BL | 192670073 | PF-1/16-5CL | 192670074 | PF-1/16-5YL | .063/1.60 | .031/0.79 | .018/0.46 | |
| 192670099 | PF-3/32-5BK | 192670100 | PF-3/32-5WT | 192670101 | PF-3/32-5RD | 192670102 | PF-3/32-5BL | 192670103 | PF-3/32-5CL | 192670104 | PF-3/32-5YL | .093/2.36 | .046/1.17 | .020/0.51 | |
| 192670129 | PF-1/8-5BK | 192670130 | PF-1/8-5WT | 192670131 | PF-1/8-5RD | 192670132 | PF-1/8-5BL | 192670133 | PF-1/8-5CL | 192670134 | PF-1/8-5YL | .125/3.18 | .062/1.57 | .020/0.51 | |
| 192670159 | PF-3/16-5BK | 192670160 | PF-3/16-5WT | 192670161 | PF-3/16-5RD | 192670162 | PF-3/16-5BL | 192670163 | PF-3/16-5CL | 192670164 | PF-3/16-5YL | .187/4.75 | .093/2.36 | .020/0.51 | |
| 192670189 | PF-1/4-5BK | 192670190 | PF-1/4-5WT | 192670191 | PF-1/4-5RD | 192670192 | PF-1/4-5BL | 192670193 | PF-1/4-5CL | 192670194 | PF-1/4-5YL | .250/6.35 | .125/3.18 | .025/0.64 | |
| 192670219 | PF-3/8-5BK | 192670220 | PF-3/8-5WT | 192670221 | PF-3/8-5RD | 192670222 | PF-3/8-5BL | 192670223 | PF-3/8-5CL | 192670224 | PF-3/8-5YL | .375/9.53 | .187/4.75 | .025/0.64 | |
| 192670249 | PF-1/2-5BK | 192670250 | PF-1/2-5WT | 192670251 | PF-1/2-5RD | 192670252 | PF-1/2-5BL | 192670253 | PF-1/2-5CL | 192670254 | PF-1/2-5YL | .500/12.70 | .250/6.35 | .025/0.64 | |

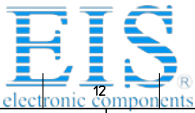
SALES DRAWING



NOTES:

- MATERIAL: POLYOLEFIN
- OTHER CUT LENGTHS ARE AVAILABLE.
- PARTS ARE RoHS COMPLIANT.

| | | | | | | |
|---|-------------------------------|---------------------------------------|-----------------|--|--------------|------------------------|
| CHANGED TITLE EC NO: IF62013-0982 DRAWN: JASO1 2013/01/01 CHKD: MACEIL 2013/01/01 APPR: MACEIL 2013/01/01 | QUALITY SYMBOLS ▽=0 ▽=0 | GENERAL TOLERANCES (UNLESS SPECIFIED) | DIMENSION STYLE | SCALE | DESIGN UNITS | THIRD ANGLE PROJECTION |
| | | mm INCH | IN/MM | 1:1 | INCH | |
| DRAWN BY BENDERLE | CHECKED BY R DEROSS | APPROVED BY R DEROSS | DATE | TITLE | | |
| | | | 2004/08/04 | POLYOLEFIN HEAT SHRINK TUBING 19267 SERIES | | |
| MATERIAL NO. | | | DOCUMENT NO. | SHEET NO. | | |
| SEE CHART | | | SD-19267-001 | 1 OF 1 | | |
| DRAFT WHERE APPLICABLE MUST REMAIN WITHIN DIMENSIONS | | | | | | |
| THIS DRAWING CONTAINS INFORMATION THAT IS PROPRIETARY TO MOLEX INCORPORATED AND SHOULD NOT BE USED WITHOUT WRITTEN PERMISSION | | | | | | |



Distributor of Molex Connector Corporation: Excellent Integrated System Limited

Datasheet of 0192670245 - 1/2 INCH HST RED LG 200' SPOOL

Contact us: sales@integrated-circuit.com Website: www.integrated-circuit.com

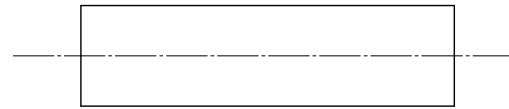
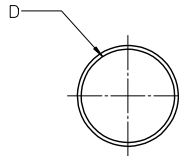
| BLACK | WHITE | RED | CLEAR | YELLOW | MIN | MAX | RECOVERED | LENGTH | | | |
|-----------------|--------------------|-----------------|--------------------|-----------------|--------------------|-----------------|--------------------|-----------------|--------------|--------------|------------------|
| MATERIAL NUMBER | ENGINEERING NUMBER | MATERIAL NUMBER | ENGINEERING NUMBER | MATERIAL NUMBER | ENGINEERING NUMBER | MATERIAL NUMBER | ENGINEERING NUMBER | EXPANDED ID 'D' | RECOVERED ID | WALL THK REF | FEET/METERS |
| 192680018 | PFV-3/64-1BK | 192680019 | PFV-3/64-1WT | 192680020 | PFV-3/64-1RD | 192680021 | PFV-3/64-1CL | 192680022 | 192680023 | 192680024 | 4.0/12 |
| 192680043 | PFV-1/16-1BK | 192680044 | PFV-1/16-1WT | 192680045 | PFV-1/16-1RD | 192680046 | PFV-1/16-1CL | 192680047 | 192680048 | 192680049 | |
| 192680068 | PFV-3/32-1BK | 192680069 | PFV-3/32-1WT | 192680070 | PFV-3/32-1RD | 192680071 | PFV-3/32-1CL | 192680072 | 192680073 | 192680074 | |
| 192680093 | PFV-1/8-1BK | 192680094 | PFV-1/8-1WT | 192680095 | PFV-1/8-1RD | 192680096 | PFV-1/8-1CL | 192680097 | 192680098 | 192680099 | |
| 192680118 | PFV-3/16-1BK | 192680119 | PFV-3/16-1WT | 192680120 | PFV-3/16-1RD | 192680121 | PFV-3/16-1CL | 192680122 | 192680123 | 192680124 | |
| 192680143 | PFV-1/4-1BK | 192680144 | PFV-1/4-1WT | 192680145 | PFV-1/4-1RD | 192680146 | PFV-1/4-1CL | 192680147 | 192680148 | 192680149 | |
| 192680193 | PFV-3/8-1BK | 192680194 | PFV-3/8-1WT | 192680195 | PFV-3/8-1RD | 192680196 | PFV-3/8-1CL | 192680197 | 192680198 | 192680199 | |
| 192680218 | PFV-1/2-1BK | 192680219 | PFV-1/2-1WT | 192680220 | PFV-1/2-1RD | 192680221 | PFV-1/2-1CL | 192680222 | 192680223 | 192680224 | |
| 192680243 | PFV-5/8-1BK | 192680244 | PFV-5/8-1WT | 192680245 | PFV-5/8-1RD | 192680246 | PFV-5/8-1CL | 192680247 | 192680248 | 192680249 | |
| 192680268 | PFV-3/4-1BK | 192680269 | PFV-3/4-1WT | 192680270 | PFV-3/4-1RD | 192680271 | PFV-3/4-1CL | 192680272 | 192680273 | 192680274 | |
| 192680293 | PFV-1-1BK | 192680294 | PFV-1-1WT | 192680295 | PFV-1-1RD | 192680296 | PFV-1-1CL | 192680297 | 192680298 | 192680299 | |
| 192680318 | PFV-1-1/4-1BK | 192680319 | PFV-1-1/4-1WT | 192680320 | PFV-1-1/4-1RD | 192680321 | PFV-1-1/4-1CL | 192680322 | 192680323 | 192680324 | |
| 192680343 | PFV-1-1/2-1BK | 192680344 | PFV-1-1/2-1WT | 192680345 | PFV-1-1/2-1RD | 192680346 | PFV-1-1/2-1CL | 192680347 | 192680348 | 192680349 | |
| 192680368 | PFV-2-1BK | 192680369 | PFV-2-1WT | 192680370 | PFV-2-1RD | 192680371 | PFV-2-1CL | 192680372 | 192680373 | 192680374 | |
| 192680393 | PFV-3-1BK | 092680394 | PFV-3-1WT | 192680395 | PFV-3-1RD | 192680396 | PFV-3-1CL | 192680397 | 192680398 | 192680399 | |
| 192680418 | PFV-4-1BK | 192680419 | PFV-4-1WT | 192680420 | PFV-4-1RD | 192680421 | PFV-4-1CL | 192680422 | 192680423 | 192680424 | |
| 192680033 | PFV-3/64-4BK | 192680034 | PFV-3/64-4WT | 192680035 | PFV-3/64-4RD | 192680036 | PFV-3/64-4CL | 192680037 | 192680038 | 192680039 | 1000/304.8 SPOOL |
| 192680058 | PFV-1/16-4BK | 192680059 | PFV-1/16-4WT | 192680060 | PFV-1/16-4RD | 192680061 | PFV-1/16-4CL | 192680062 | 192680063 | 192680064 | |
| 192680083 | PFV-3/32-4BK | 192680084 | PFV-3/32-4WT | 192680085 | PFV-3/32-4RD | 192680086 | PFV-3/32-4CL | 192680087 | 192680088 | 192680089 | |
| 192680108 | PFV-1/8-4BK | 192680109 | PFV-1/8-4WT | 192680110 | PFV-1/8-4RD | 192680111 | PFV-1/8-4CL | 192680112 | 192680113 | 192680114 | |
| 192680133 | PFV-3/16-4BK | 192680134 | PFV-3/16-4WT | 192680135 | PFV-3/16-4RD | 192680136 | PFV-3/16-4CL | 192680137 | 192680138 | 192680139 | |
| 192680158 | PFV-1/4-4BK | 192680159 | PFV-1/4-4WT | 192680160 | PFV-1/4-4RD | 192680161 | PFV-1/4-4CL | 192680162 | 192680163 | 192680164 | |
| 192680208 | PFV-3/8-4BK | 192680209 | PFV-3/8-4WT | 192680210 | PFV-3/8-4RD | 192680211 | PFV-3/8-4CL | 192680212 | 192680213 | 192680214 | |
| 192680233 | PFV-1/2-4BK | 192680234 | PFV-1/2-4WT | 192680235 | PFV-1/2-4RD | 192680236 | PFV-1/2-4CL | 192680237 | 192680238 | 192680239 | |
| 192680258 | PFV-5/8-4BK | 192680259 | PFV-5/8-4WT | 192680260 | PFV-5/8-4RD | 192680261 | PFV-5/8-4CL | 192680262 | 192680263 | 192680264 | |
| 192680283 | PFV-3/4-4BK | 192680284 | PFV-3/4-4WT | 192680285 | PFV-3/4-4RD | 192680286 | PFV-3/4-4CL | 192680287 | 192680288 | 192680289 | |
| 192680308 | PFV-1-4BK | 192680309 | PFV-1-4WT | 192680310 | PFV-1-4RD | 192680311 | PFV-1-4CL | 192680312 | 192680313 | 192680314 | |
| 192680333 | PFV-1-1/4-4BK | 192680334 | PFV-1-1/4-4WT | 192680335 | PFV-1-1/4-4RD | 192680336 | PFV-1-1/4-4CL | 192680337 | 192680338 | 192680339 | |
| 192680038 | PFV-3/64-5BK | 192680039 | PFV-3/64-5WT | 192680040 | PFV-3/64-5RD | 192680041 | PFV-3/64-5CL | 192680042 | 192680043 | 192680044 | 500/152.4 SPOOL |
| 192680063 | PFV-1/16-5BK | 192680064 | PFV-1/16-5WT | 192680065 | PFV-1/16-5RD | 192680066 | PFV-1/16-5CL | 192680067 | 192680068 | 192680069 | |
| 192680088 | PFV-3/32-5BK | 192680089 | PFV-3/32-5WT | 192680090 | PFV-3/32-5RD | 192680091 | PFV-3/32-5CL | 192680092 | 192680093 | 192680094 | |
| 192680113 | PFV-1/8-5BK | 192680114 | PFV-1/8-5WT | 192680115 | PFV-1/8-5RD | 192680116 | PFV-1/8-5CL | 192680117 | 192680118 | 192680119 | |
| 192680138 | PFV-3/16-5BK | 192680139 | PFV-3/16-5WT | 192680140 | PFV-3/16-5RD | 192680141 | PFV-3/16-5CL | 192680142 | 192680143 | 192680144 | |
| 192680163 | PFV-1/4-5BK | 192680164 | PFV-1/4-5WT | 192680165 | PFV-1/4-5RD | 192680166 | PFV-1/4-5CL | 192680167 | 192680168 | 192680169 | |
| 192680213 | PFV-3/8-5BK | 192680214 | PFV-3/8-5WT | 192680215 | PFV-3/8-5RD | 192680216 | PFV-3/8-5CL | 192680217 | 192680218 | 192680219 | |
| 192680238 | PFV-1/2-5BK | 192680239 | PFV-1/2-5WT | 192680240 | PFV-1/2-5RD | 192680241 | PFV-1/2-5CL | 192680242 | 192680243 | 192680244 | |
| 192680263 | PFV-5/8-5BK | 192680264 | PFV-5/8-5WT | 192680265 | PFV-5/8-5RD | 192680266 | PFV-5/8-5CL | 192680267 | 192680268 | 192680269 | |
| 192680358 | PFV-1-1/2-4BK | 192680359 | PFV-1-1/2-4WT | 192680360 | PFV-1-1/2-4RD | 192680361 | PFV-1-1/2-4CL | 192680362 | 192680363 | 192680364 | |
| 192680383 | PFV-2-4BK | 192680384 | PFV-2-4WT | 192680385 | PFV-2-4RD | 192680386 | PFV-2-4CL | 192680387 | 192680388 | 192680389 | |
| 192680408 | PFV-3-4BK | 192680409 | PFV-3-4WT | 192680410 | PFV-3-4RD | 192680411 | PFV-3-4CL | 192680412 | 192680413 | 192680414 | |
| 192680433 | PFV-4-4BK | 192680434 | PFV-4-4WT | 192680435 | PFV-4-4RD | 192680436 | PFV-4-4CL | 192680437 | 192680438 | 192680439 | |

NOTES:

- MATERIAL: PVC.
- OTHER CUT LENGTHS ARE AVAILABLE.
- PARTS ARE ROHS COMPLIANT.

| <p>CHANGED TITLE</p> <p>EC NO: 192670245-0962</p> <p>DRWNGR: JASOT 2013/01/10</p> <p>CHKD: MALINEIL 2013/01/10</p> <p>APPR: MALINEIL 2013/01/13</p> | <p>QUALITY SYMBOLS</p> <p>▽=0</p> <p>▽=0</p> | <p>GENERAL TOLERANCES (UNLESS SPECIFIED)</p> <table border="1" style="width: 100%; border-collapse: collapse;"> <tr> <th></th> <th>mm</th> <th>INCH</th> </tr> <tr> <td>4 PLACES ±</td> <td>±---</td> <td>±---</td> </tr> <tr> <td>3 PLACES ±</td> <td>±---</td> <td>±.010</td> </tr> <tr> <td>2 PLACES ±</td> <td>±0.25</td> <td>±.02</td> </tr> <tr> <td>1 PLACE ±</td> <td>±0.5</td> <td>±---</td> </tr> <tr> <td colspan="3" style="text-align: center;">ANGULAR ±---</td> </tr> </table> | | mm | INCH | 4 PLACES ± | ±--- | ±--- | 3 PLACES ± | ±--- | ±.010 | 2 PLACES ± | ±0.25 | ±.02 | 1 PLACE ± | ±0.5 | ±--- | ANGULAR ±--- | | | <p>DIMENSION STYLE</p> <p>IN/MM</p> | <p>SCALE</p> <p>1:1</p> | <p>DESIGN UNITS</p> <p>INCH</p> | <p>THIRD ANGLE PROJECTION</p> | <p>TITLE</p> <p>PVC, HEAT SHRINK TUBING 19268 SERIES</p> | <p>MATERIAL NO.</p> <p>SD-19268-001</p> | <p>DOCUMENT NO.</p> <p>SD-19268-001</p> | <p>SHEET NO.</p> <p>1 OF 1</p> |
|---|--|---|--|----|------|------------|------|------|------------|------|-------|------------|-------|------|-----------|------|------|--------------|--|--|-------------------------------------|-------------------------|---------------------------------|-------------------------------|--|---|---|--------------------------------|
| | | | | mm | INCH | | | | | | | | | | | | | | | | | | | | | | | |
| 4 PLACES ± | ±--- | ±--- | | | | | | | | | | | | | | | | | | | | | | | | | | |
| 3 PLACES ± | ±--- | ±.010 | | | | | | | | | | | | | | | | | | | | | | | | | | |
| 2 PLACES ± | ±0.25 | ±.02 | | | | | | | | | | | | | | | | | | | | | | | | | | |
| 1 PLACE ± | ±0.5 | ±--- | | | | | | | | | | | | | | | | | | | | | | | | | | |
| ANGULAR ±--- | | | | | | | | | | | | | | | | | | | | | | | | | | | | |
| <p>DRAFT WHERE APPLICABLE MUST REMAIN WITHIN DIMENSIONS</p> | <p>SEE CHART</p> | <p>THIS DRAWING CONTAINS INFORMATION THAT IS PROPRIETARY TO MOLEX INCORPORATED AND SHOULD NOT BE USED WITHOUT WRITTEN PERMISSION</p> | | | | | | | | | | | | | | | | | | | | | | | | | | |

| 10 | | 9 | | 8 | | 7 | | 6 | | 5 | | 4 | | 3 | | 2 | | 19269 | | | | |
|-----------------|--------------------|-----------------|--------------------|-----------------|--------------|--------------|-------------|-----------|--|--------|--|---|--|---|--|---|--|-------|--|--|--|--|
| BLACK | | CLEAR | | MIN | | MAX | | RECOVERED | | LENGTH | | | | | | | | | | | | |
| MATERIAL NUMBER | ENGINEERING NUMBER | MATERIAL NUMBER | ENGINEERING NUMBER | EXPANDED ID "D" | RECOVERED ID | WALL THK REF | FEET/METERS | | | | | | | | | | | | | | | |
| 192690008 | PF3-1/8-1BK | | | .125/3.018 | .040/1.02 | .038/0.97 | 4.0/1.2 | | | | | | | | | | | | | | | |
| 192690013 | PF3-3/16-1BK | | | .187/4.75 | .060/1.52 | .045/1.14 | | | | | | | | | | | | | | | | |
| | | 192690043 | PF3-3/16-1CL | .225/5.72 | .050/1.27 | .045/1.14 | | | | | | | | | | | | | | | | |
| 192690018 | PF3-1/4-1BK | | | .250/6.35 | .080/2.03 | .047/1.19 | | | | | | | | | | | | | | | | |
| | | 192690048 | PF3-1/4-1CL | .293/7.44 | .065/1.65 | .047/1.19 | | | | | | | | | | | | | | | | |
| 192690023 | PF3-3/8-1BK | | | .375/9.53 | .120/3.05 | .050/1.27 | | | | | | | | | | | | | | | | |
| | | 192690053 | PF3-3/8-1CL | .427/10.85 | .095/2.43 | .050/1.27 | | | | | | | | | | | | | | | | |
| 192690028 | PF3-1/2-1BK | | | .500/12.70 | .157/3.99 | .055/1.40 | | | | | | | | | | | | | | | | |
| | | 192690058 | PF3-1/2-1CL | .700/17.78 | .175/4.45 | .055/1.40 | | | | | | | | | | | | | | | | |
| 192690033 | PF3-3/4-1BK | | | .750/19.05 | .230/5.84 | .065/1.65 | | | | | | | | | | | | | | | | |
| 192690038 | PF3-1-1BK | | | 1.000/25.40 | .320/8.13 | .075/1.90 | | | | | | | | | | | | | | | | |



SALES DRAWING

NOTES:

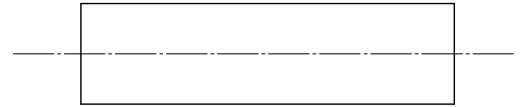
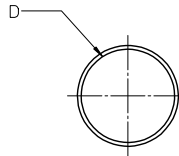
(A1)

1. MATERIAL: POLYOLEFIN WITH ADHESIVE LINER.
2. OTHER CUT LENGTHS ARE AVAILABLE.
3. PARTS ARE RoHS COMPLIANT.

(A1)

| | | | | | | | |
|--|---|--|---|--|---------------------------|------------------------------|---------------------|
| CORRECT MAT'L E.C. NO: IPG/2013-0982 DRAWN BY: JASOT 2013/01/10 CHKD: JACNETL 2013/01/10 APPR: JACNETL 2013/01/31 REV: A1 | QUALITY SYMBOLS ▽=0 ▽=0 | GENERAL TOLERANCES (UNLESS SPECIFIED) mm INCH 4 PLACES ± --- ± --- 3 PLACES ± --- ± .010 2 PLACES ± 0.25 ± .02 1 PLACE ± 0.51 ± --- ANGULAR ± ---° | DIMENSION STYLE IN/MM | SCALE 1:1 | DESIGN UNITS INCH | THIRD ANGLE PROJECTION | |
| | DRAWN BY: BENDERLE DATE: 2004/09/23 | CHECKED BY: R DEROSS DATE: 2004/09/23 | APPROVED BY: R DEROSS DATE: 2004/09/23 | TITLE (A1) POLYOLEFIN W/ ADHESIVE LINER HEAT SHRINK TUBING 19269 SERIES | MATERIAL NO. SEE CHART | DOCUMENT NO. SD-19269-001 | SHEET NO. 1 OF 1 |
| | DRAFT WHERE APPLICABLE MUST REMAIN WITHIN DIMENSIONS | | | | | | |
| | THIS DRAWING CONTAINS INFORMATION THAT IS PROPRIETARY TO MOLEX INCORPORATED AND SHOULD NOT BE USED WITHOUT WRITTEN PERMISSION | | | | | | |

| BLACK | | RED | | MIN | MAX | RECOVERED | LENGTH |
|-----------------|--------------------|-----------------|--------------------|-----------------|--------------|--------------|-------------|
| MATERIAL NUMBER | ENGINEERING NUMBER | MATERIAL NUMBER | ENGINEERING NUMBER | EXPANDED ID "D" | RECOVERED ID | WALL THK REF | FEET/METERS |
| 192700008 | PFB-04-1BK | 192700013 | PFB-04-1RD | .400/10.16 | .150/3.81 | .060/1.53 | 4.0/1.2 |
| 192700018 | PFB-07-1BK | 192700023 | PFB-07-1RD | .750/19.05 | .220/5.59 | .095/2.41 | |
| 192700028 | PFB-11-1BK | 192700033 | PFB-11-1RD | 1.100/27.94 | .375/9.53 | .120/3.05 | |
| 192700038 | PFB-15-1BK | 192700043 | PFB-15-1RD | 1.500/38.10 | .500/19.05 | .140/3.56 | |
| 192700048 | PFB-20-1BK | 192700053 | PFB-20-1RD | 2.000/50.80 | .750/19.05 | .155/3.98 | |
| 192700058 | PFB-30-1BK | 192700063 | PFB-30-1RD | 3.540/89.92 | 1.18/29.97 | .155/3.98 | |
| 192700068 | PFB-40-1BK | 192700073 | PFB-40-1RD | 4.72/119.89 | 1.57/39.88 | .170/4.37 | |



SALES DRAWING

NOTES:

- MATERIAL: POLYOLEFIN
- OTHER CUT LENGTHS ARE AVAILABLE.
- PARTS ARE ROHS COMPLIANT.

(A1)

| | | | | | | | | | |
|---|--------------------------------------|--|-----------------------|---|--------------------------------|---------------------------|---|------------------------|--|
| CHANGED TITLE E.C. NO: IPG/2013-0982 DRAWING: JAS01 2013/01/10 CHKD: IMACNEIL 2013/01/10 APPR: IMACNEIL 2013/01/31 | QUALITY SYMBOLS ▽=0 ▽=0 | GENERAL TOLERANCES (UNLESS SPECIFIED) | | DIMENSION STYLE IN/MM | | SCALE 1:1 | DESIGN UNITS INCH | THIRD ANGLE PROJECTION | |
| | | 4 PLACES | ± --- | ± --- | DRAWN BY BENDERLE | DATE 2004/09/23 | TITLE (A1) POLYOLEFIN HEAT SHRINK TUBING 19270 SERIES | | |
| | | 3 PLACES | ± --- | ± .010 | CHECKED BY R DEROSS | DATE 2004/09/23 | MATERIAL NO. SEE CHART | | |
| | | 2 PLACES | ± 0.25 | ± .02 | APPROVED BY R DEROSS | DATE 2004/09/23 | DOCUMENT NO. SD-19270-001 | | |
| 1 PLACE | ± 0.51 | ± --- | ANGULAR ± ---° | | SIZE B | | SHEET NO. 1 OF 1 | | |
| DRAFT WHERE APPLICABLE MUST REMAIN WITHIN DIMENSIONS | | | | THIS DRAWING CONTAINS INFORMATION THAT IS PROPRIETARY TO MOLEX INCORPORATED AND SHOULD NOT BE USED WITHOUT WRITTEN PERMISSION | | | | | |